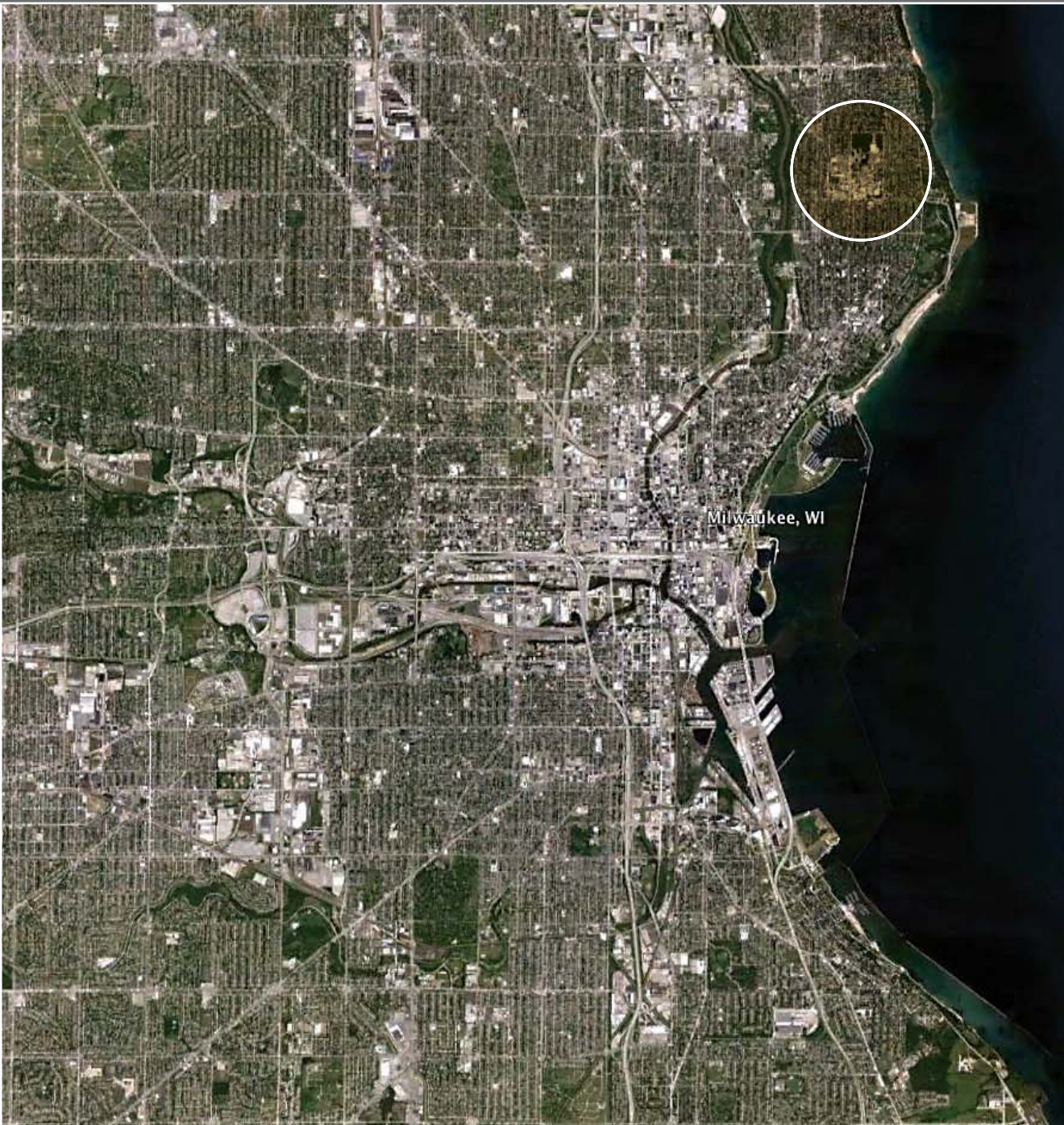
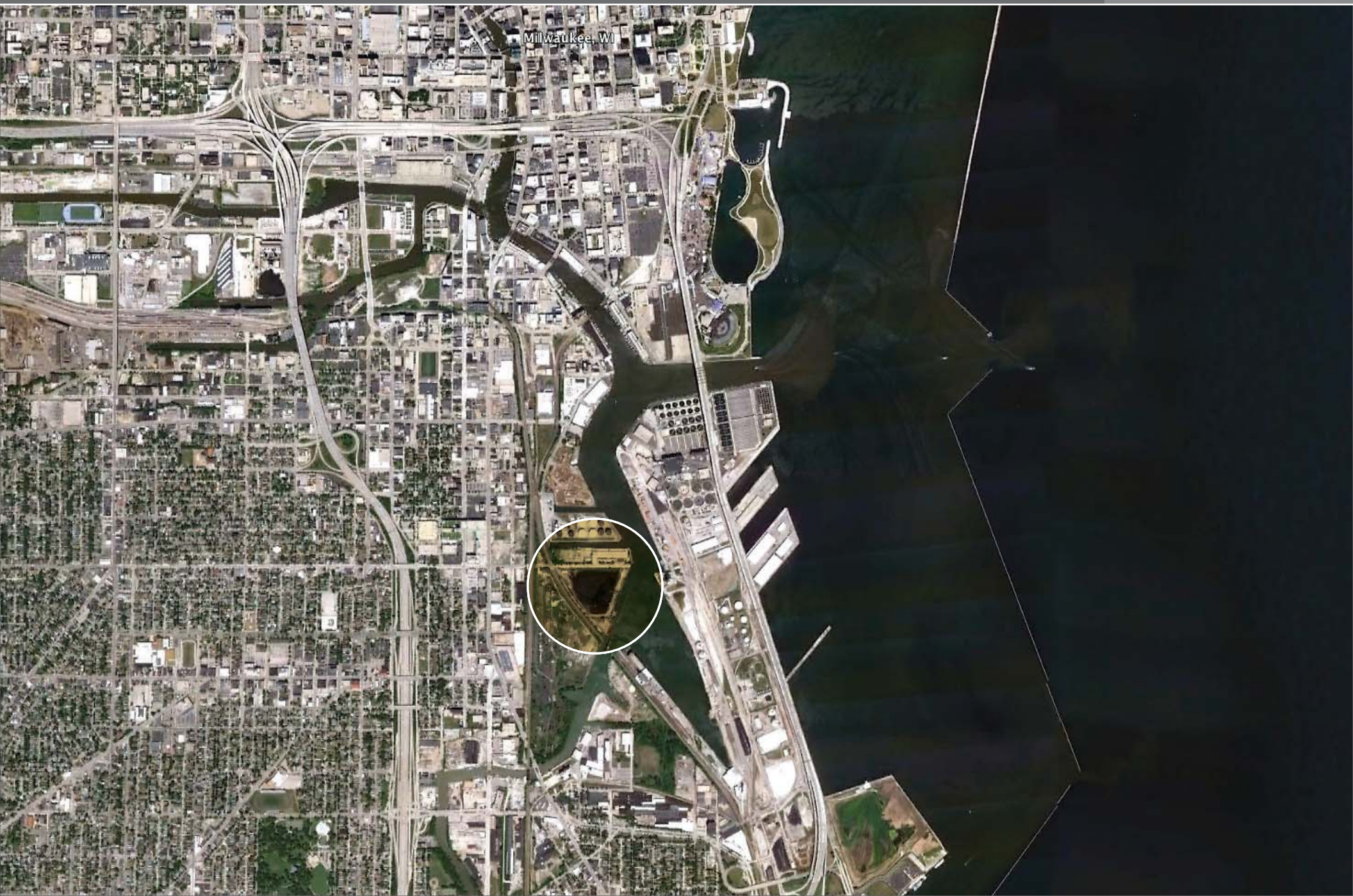




Waterfront Reaction









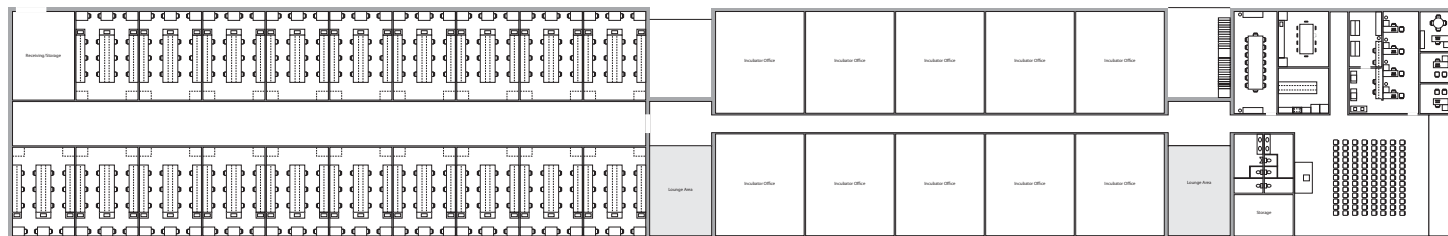
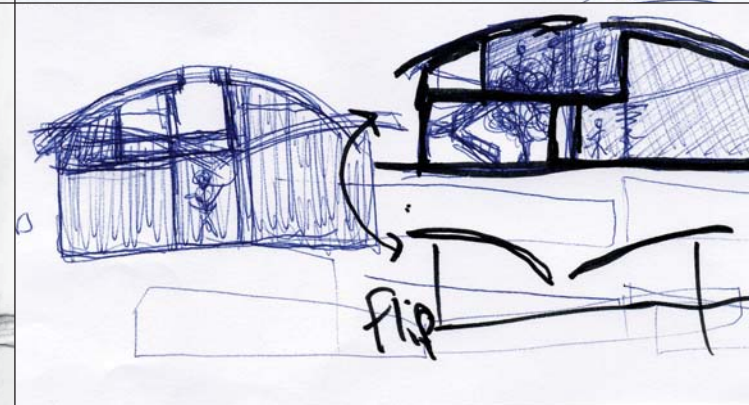
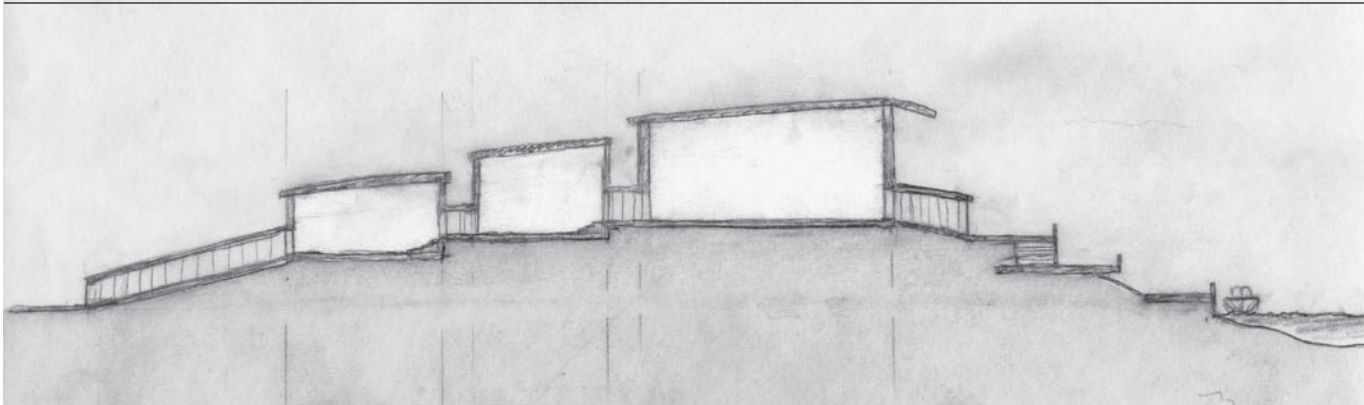
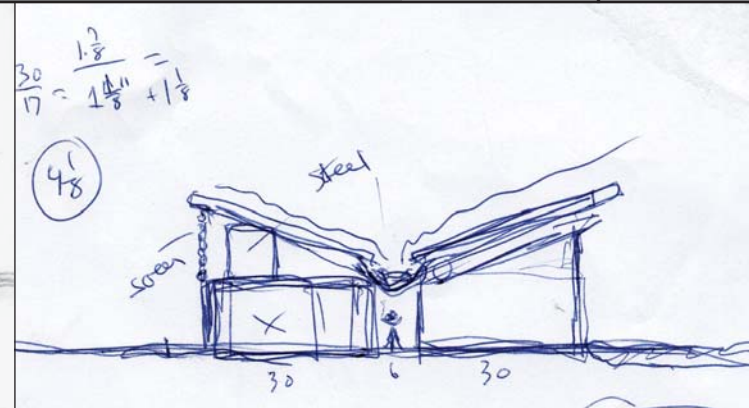


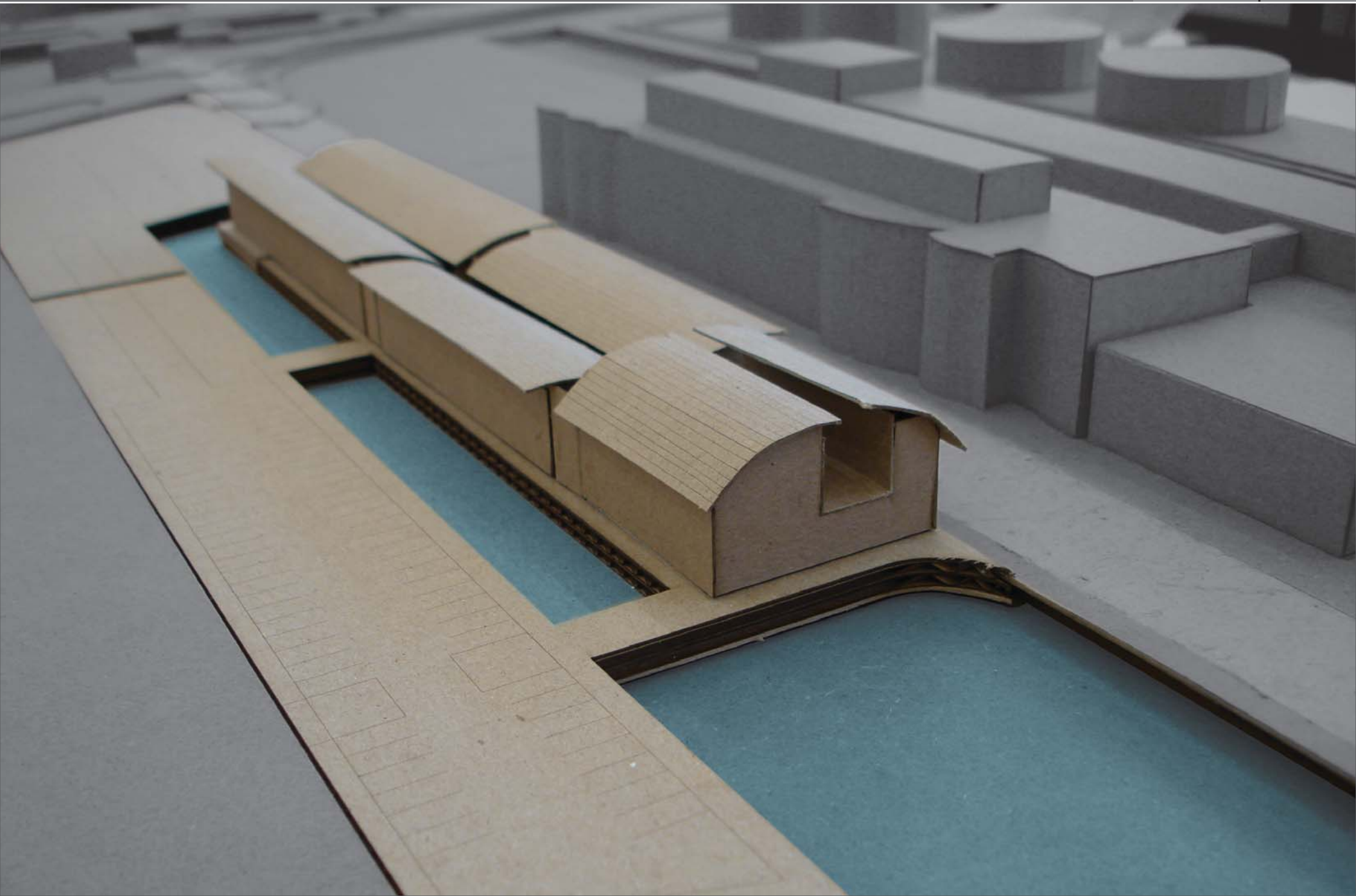


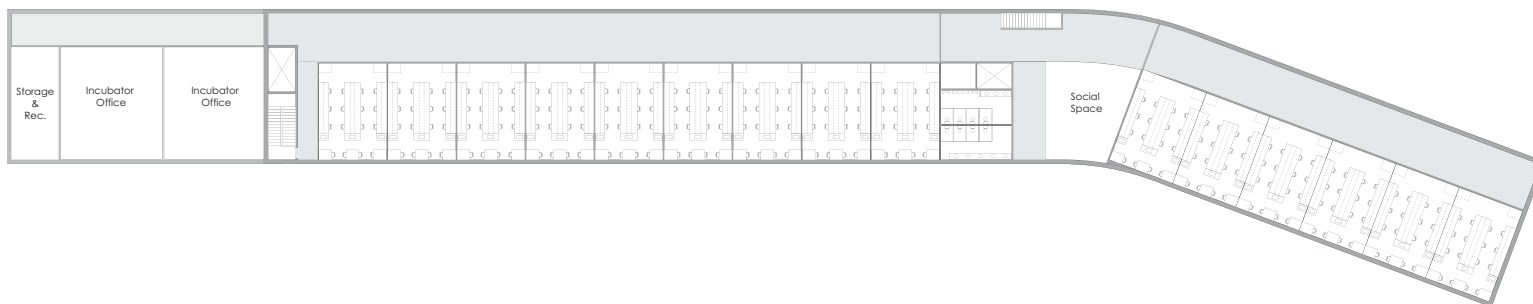
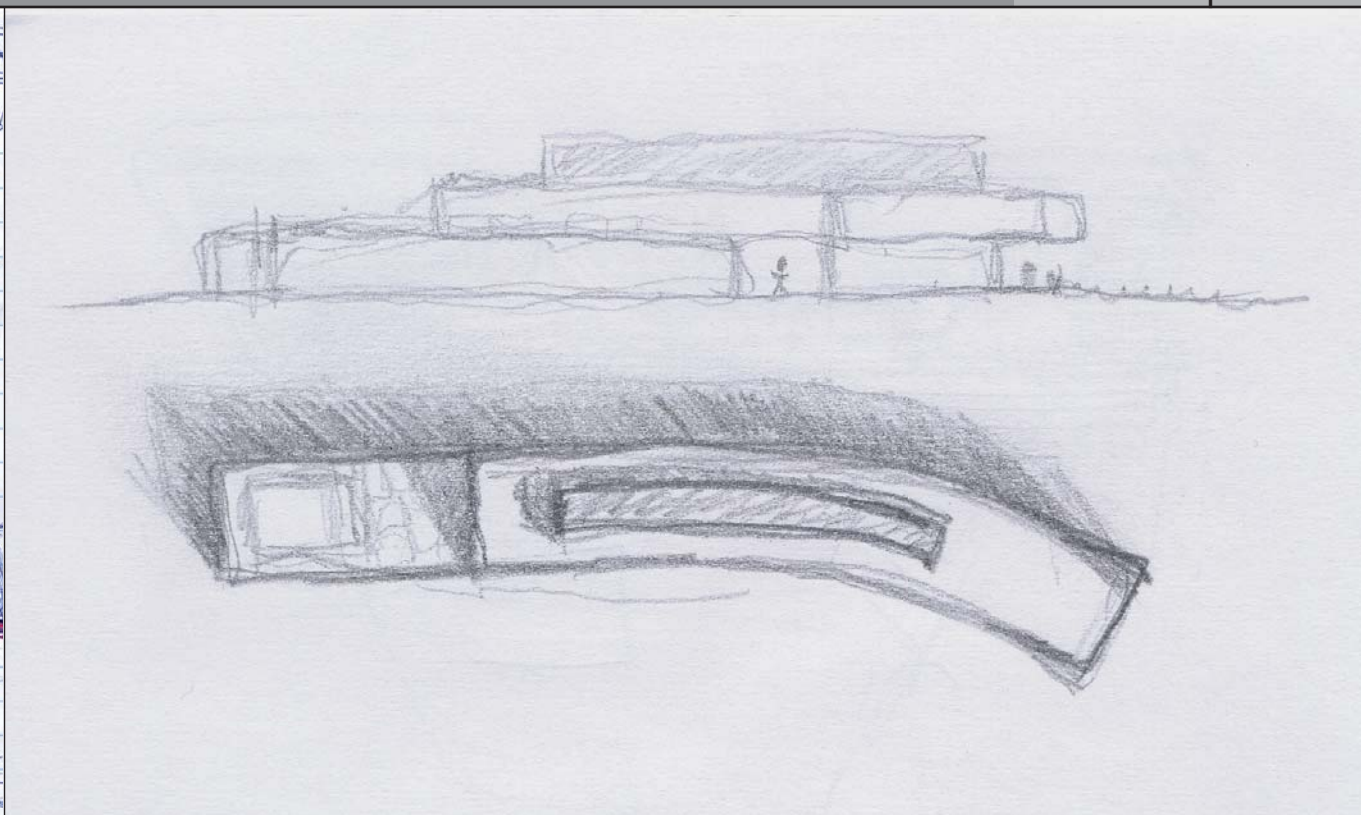
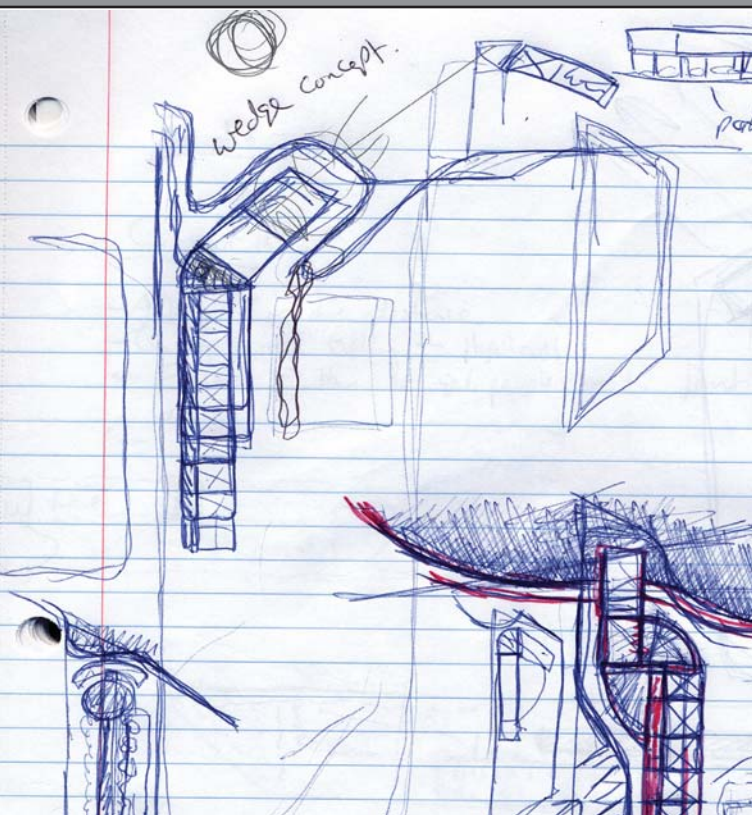


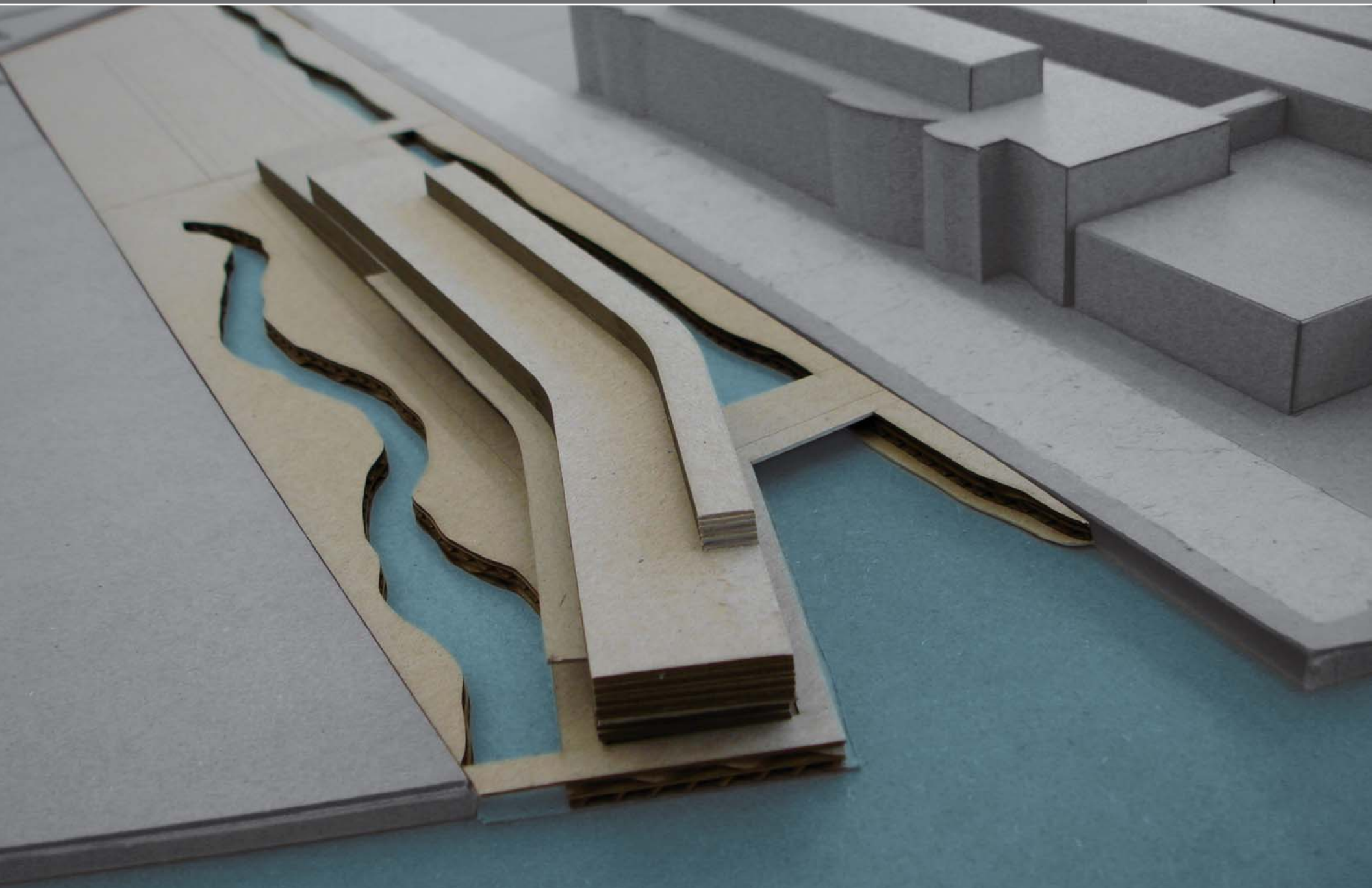


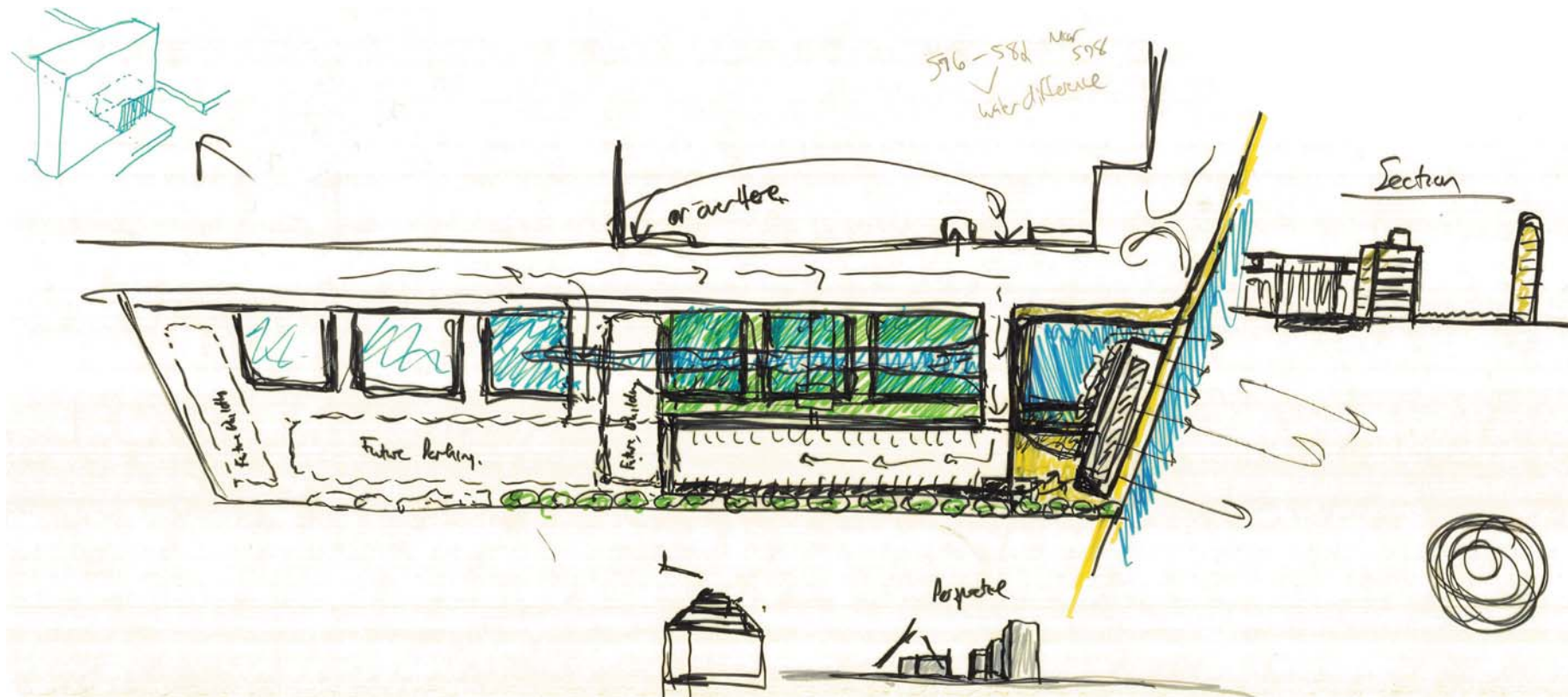
1. **Concepts (3)** – one picked by class and thesis committee members
2. **Budget** – Stay within one of three ranges based on square footage cost.
 - a) Office = \$200 gross sqft, Labs = \$400 sqft – ***OK***
 - b) Office = \$250 gross sqft, Labs = \$450 sqft – ***Good***
 - c) Office = \$300 gross sqft, Labs = \$500 sqft – ***Very Good***
3. **Reality** – It can be built



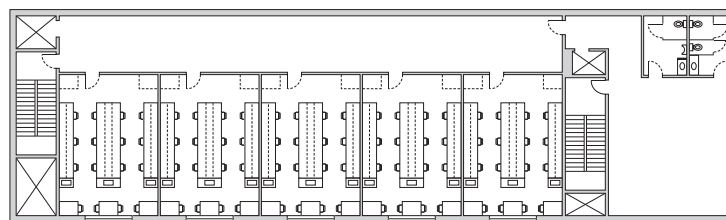




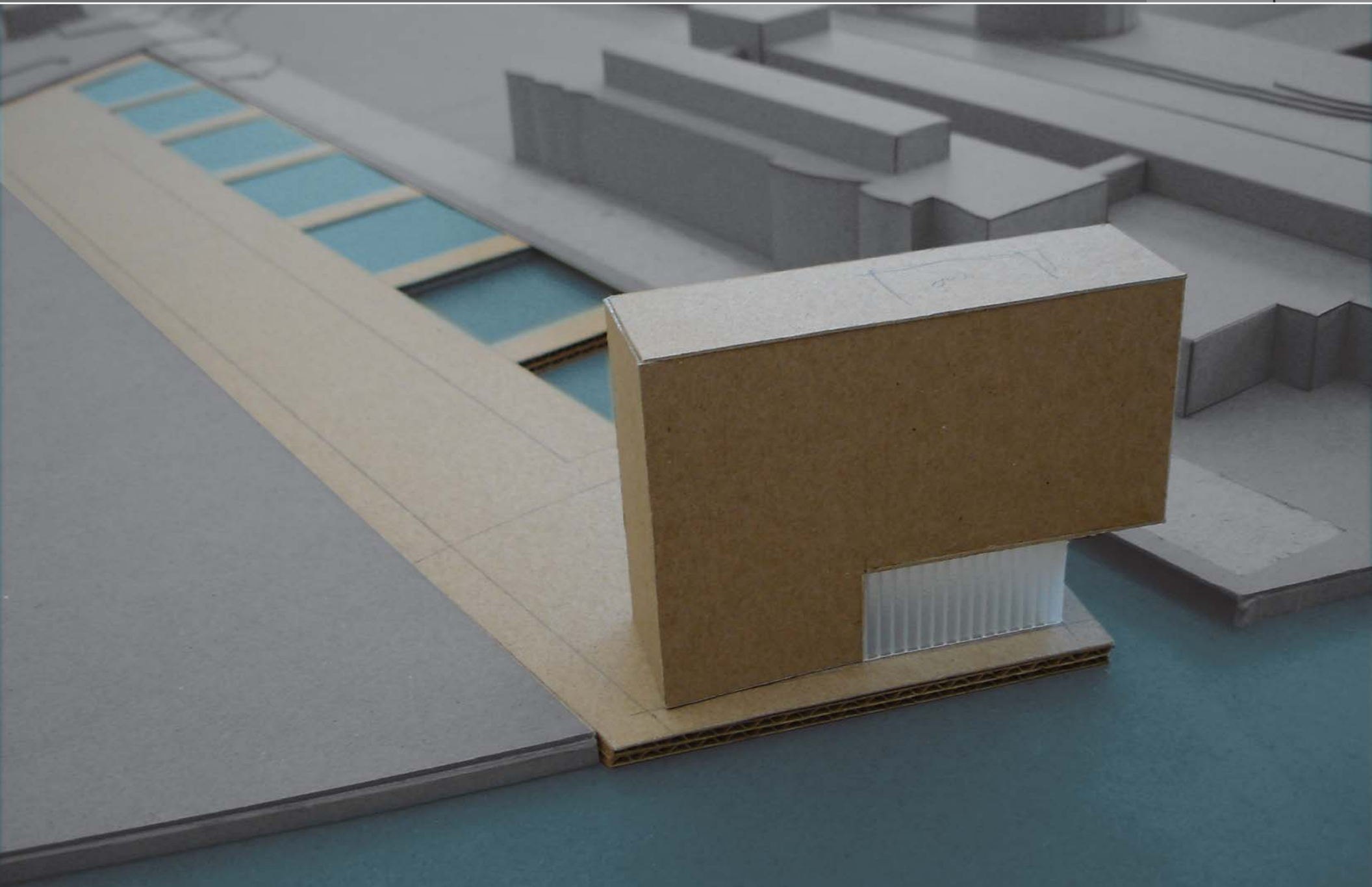


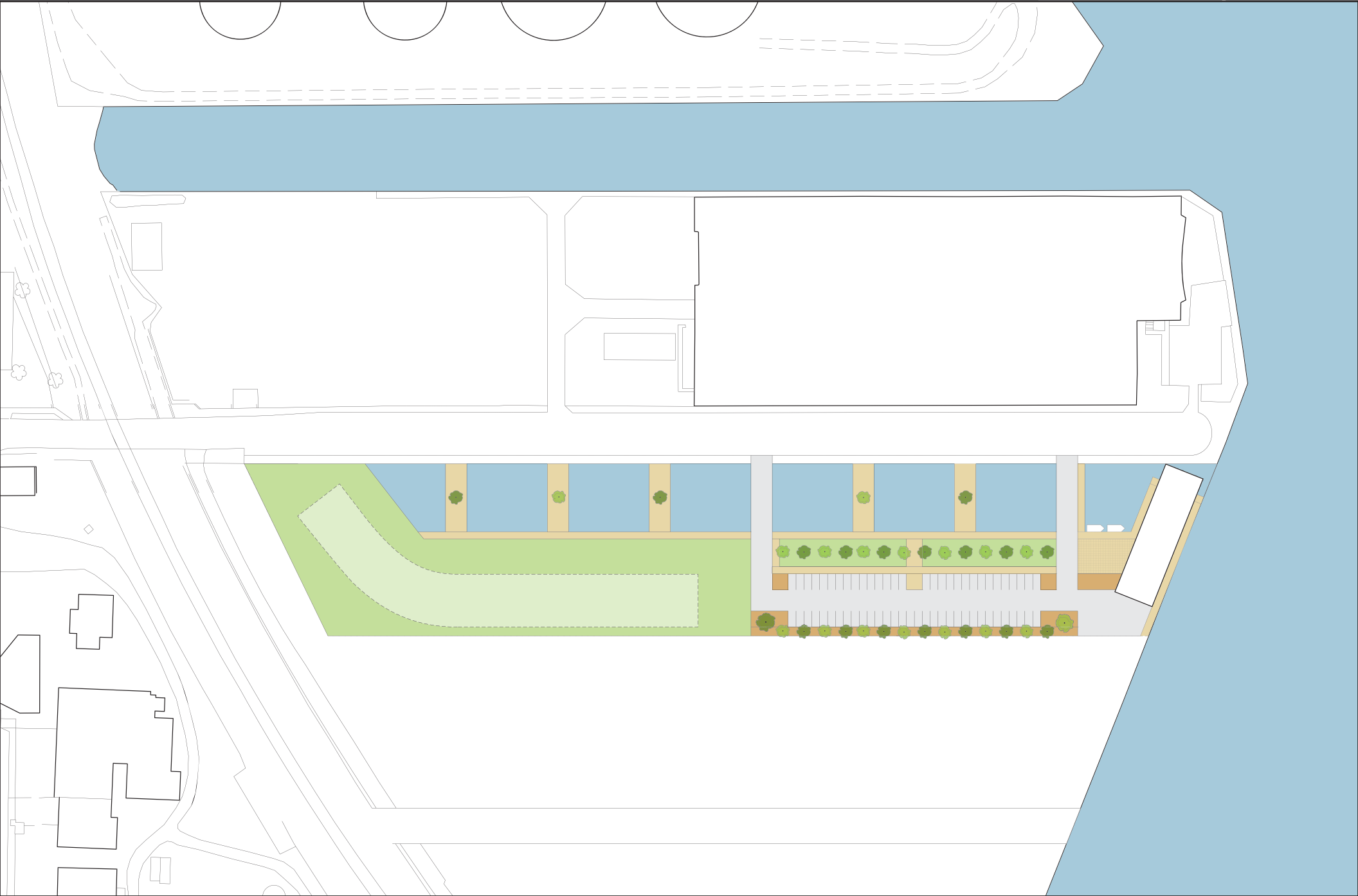


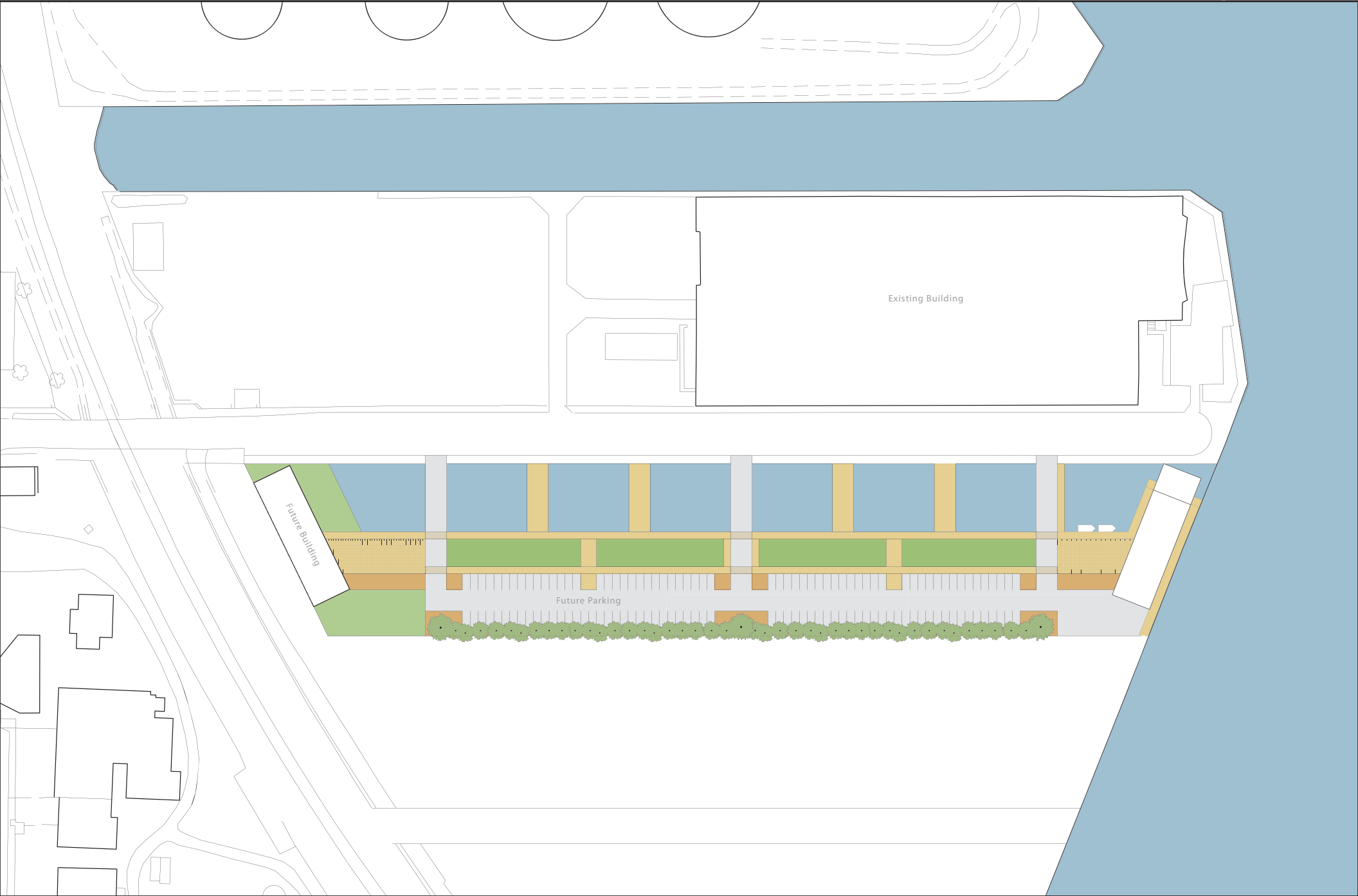
Floor 1



Floors 3-5

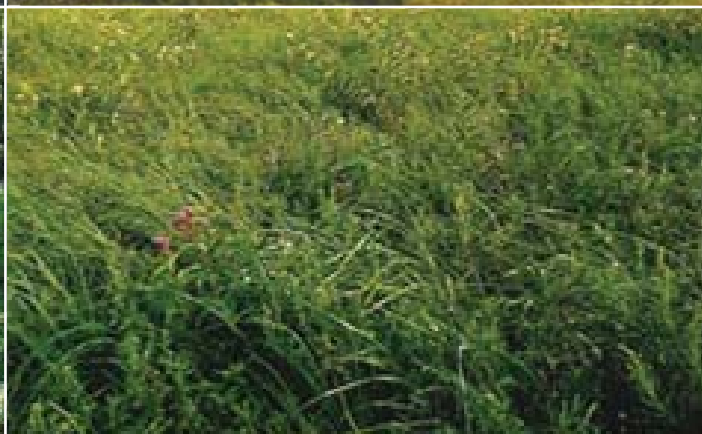
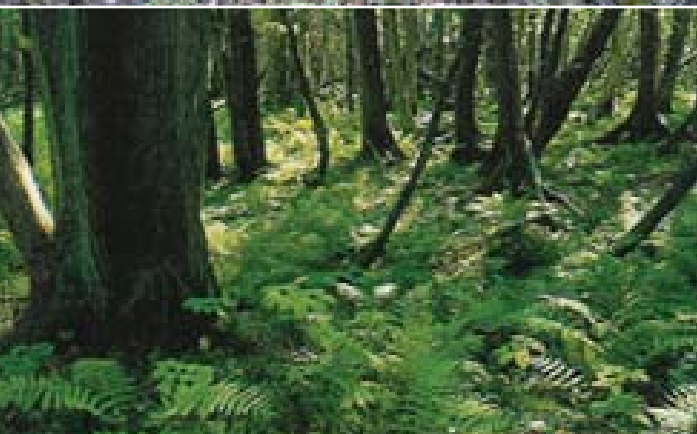
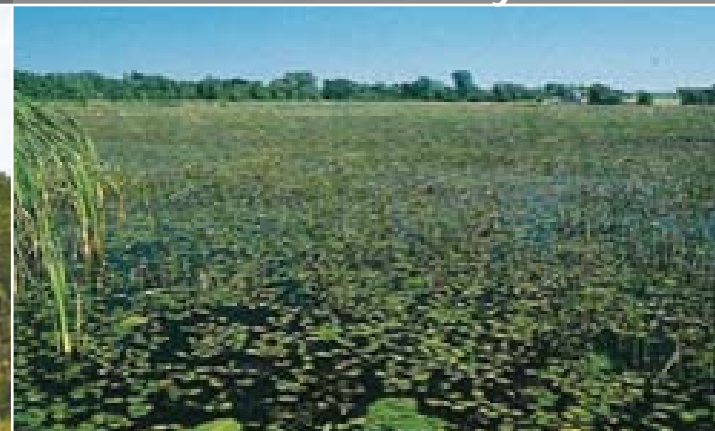


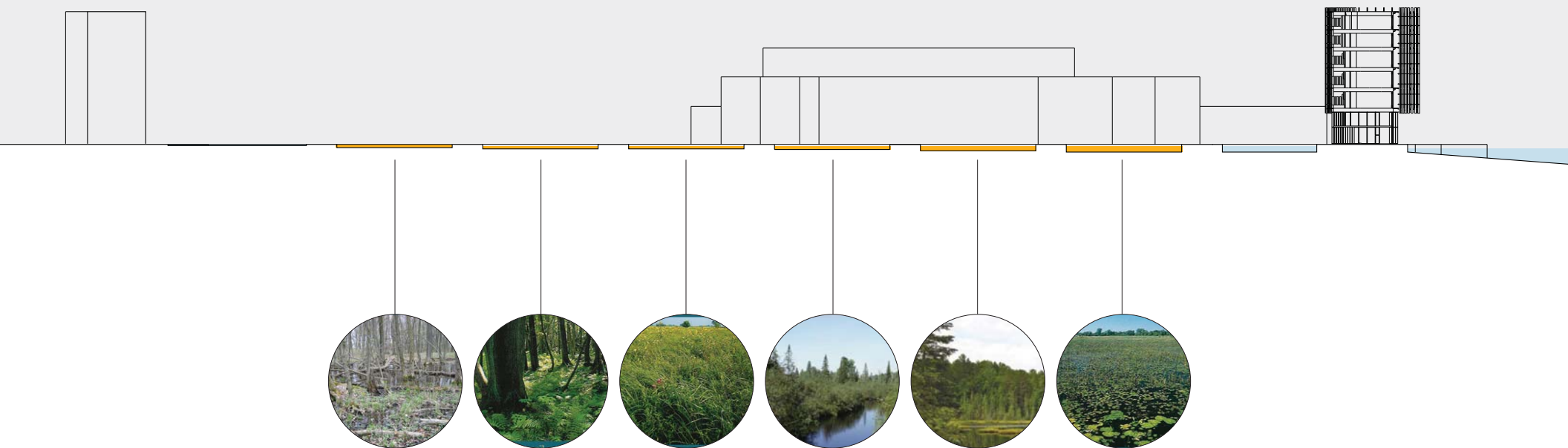


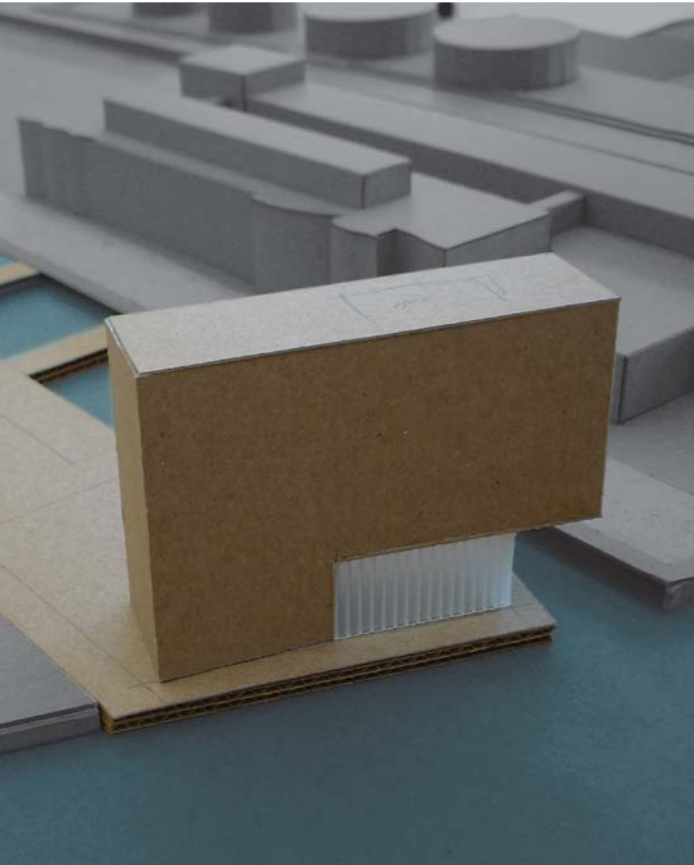




Wisconsin Ecosystems

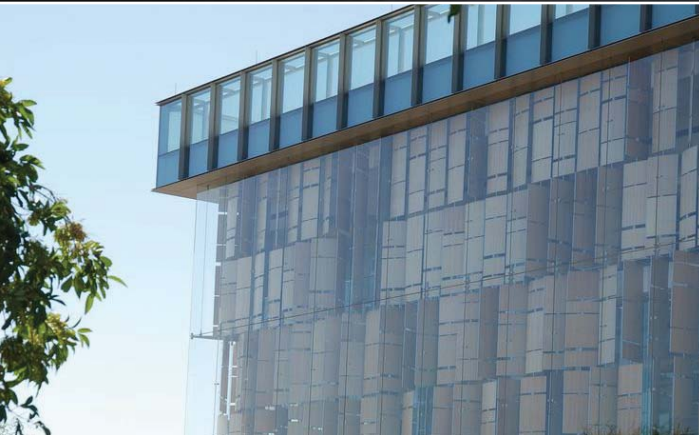




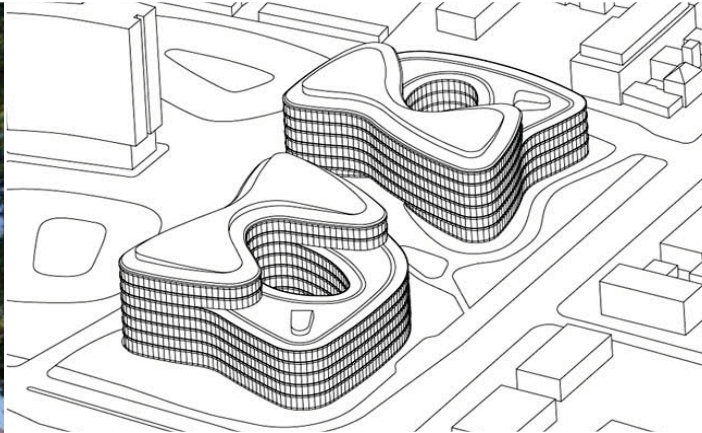


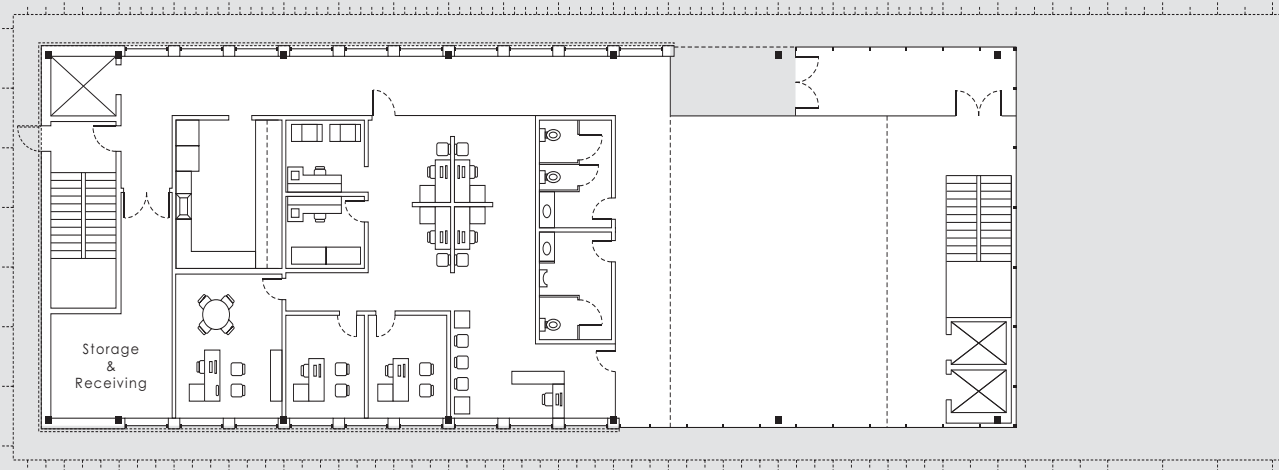
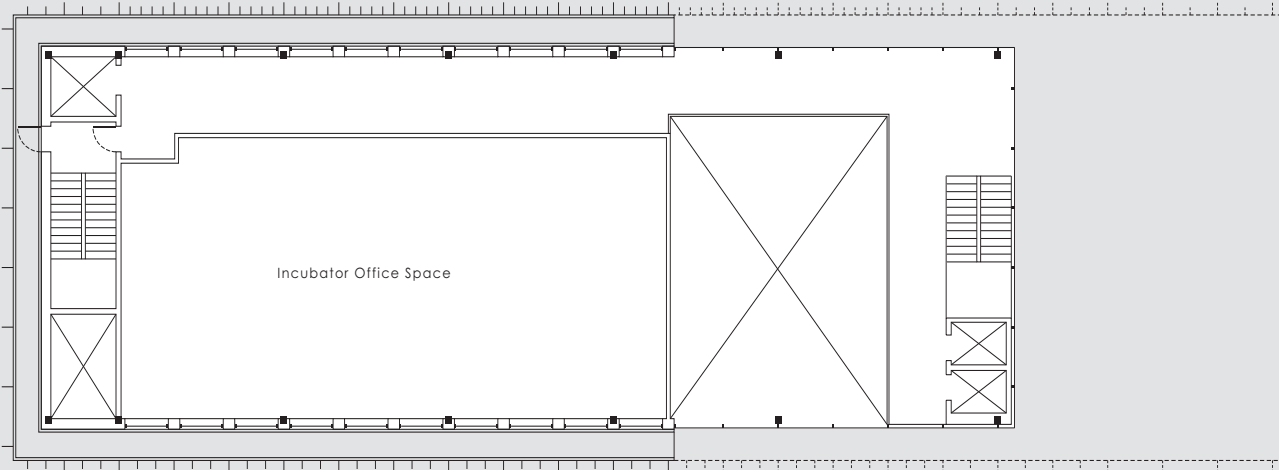
1. Need for solar-shading due to sun exposure on east and west facades.
2. How to maintain established views, while blocking sunlight to reduce solar gain.
3. How to keep the integrity of the massing as windows are incorporated to provide views.

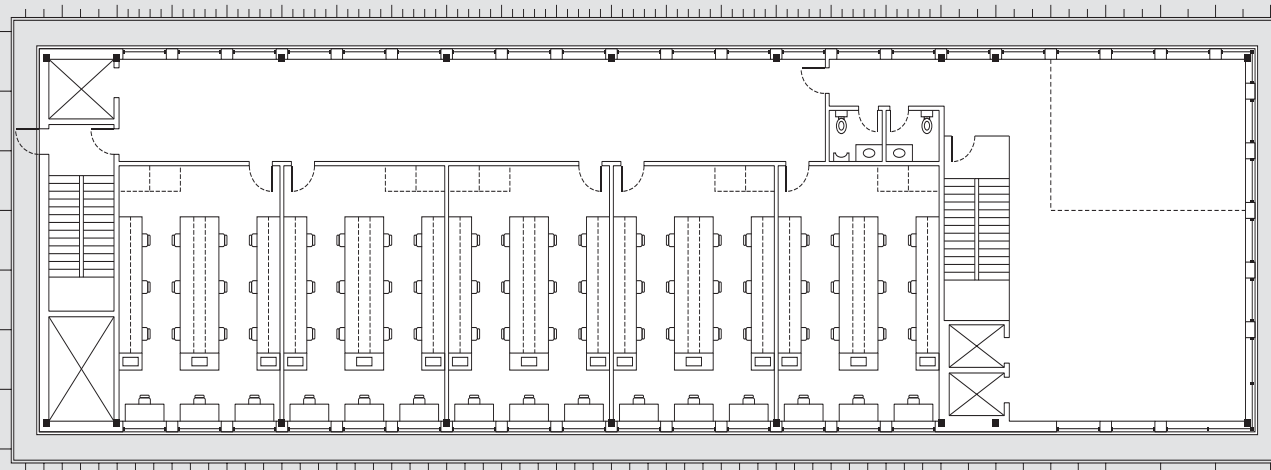
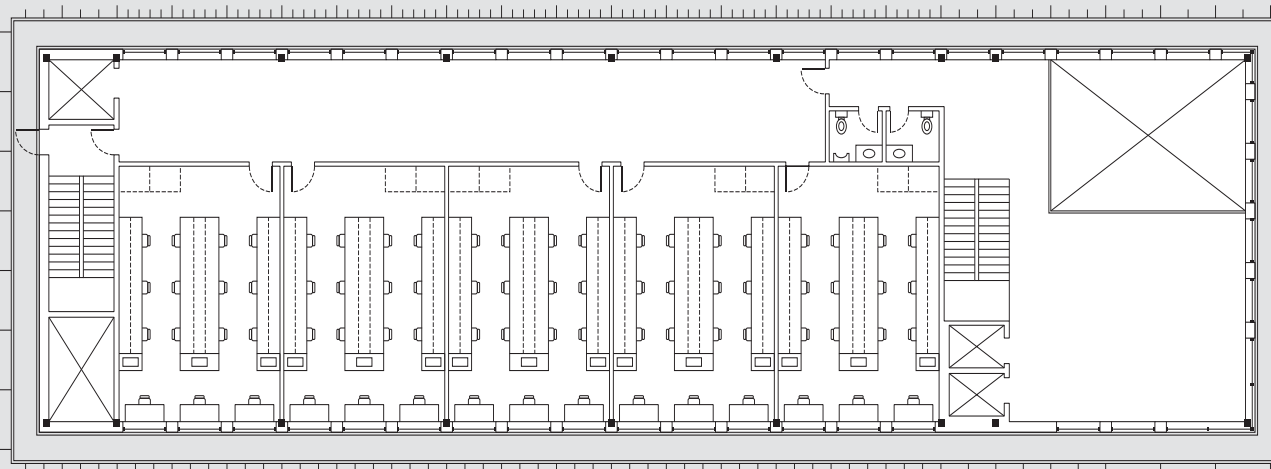
Solar-Shading Examples



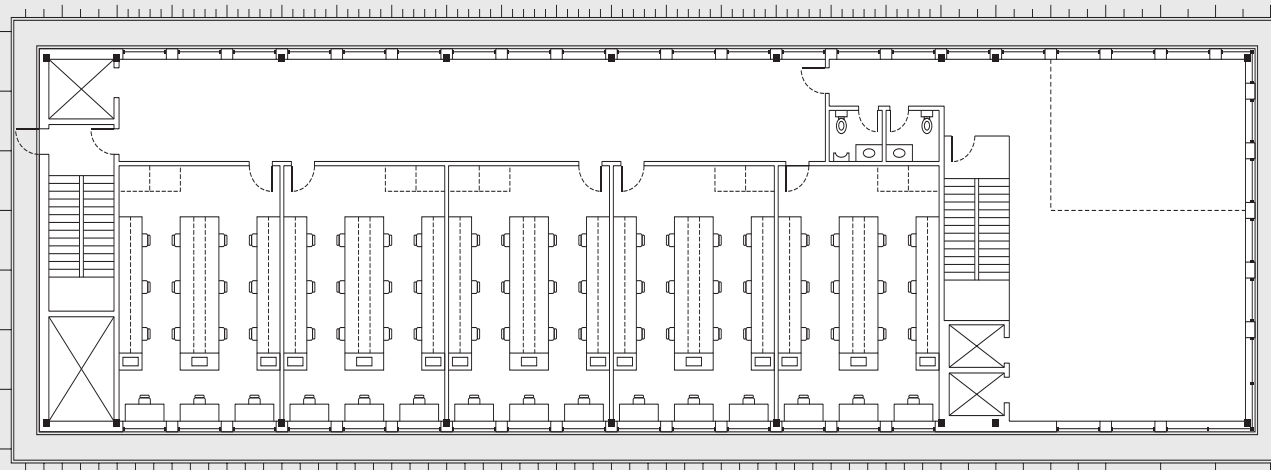
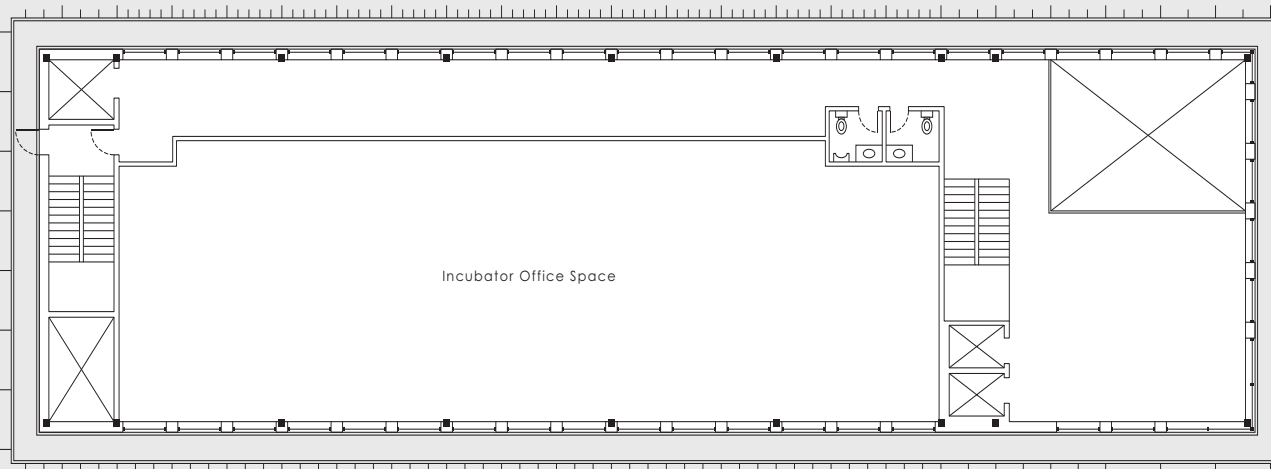
Saurebruch Hutton Oval Offices

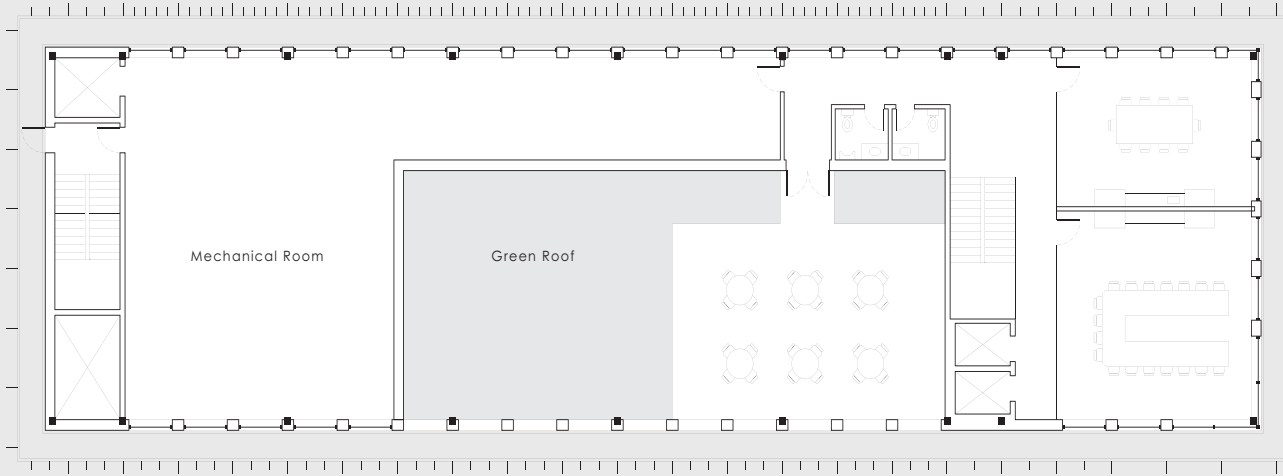




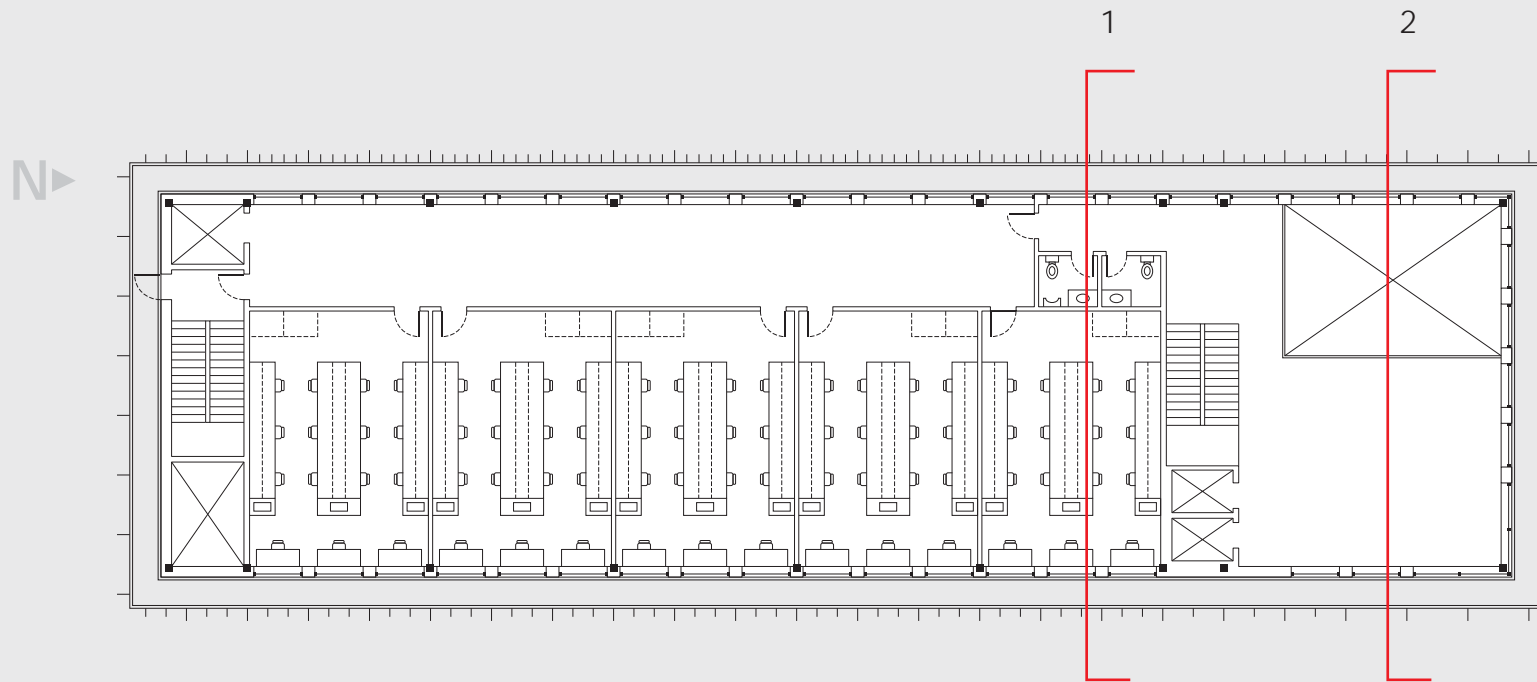


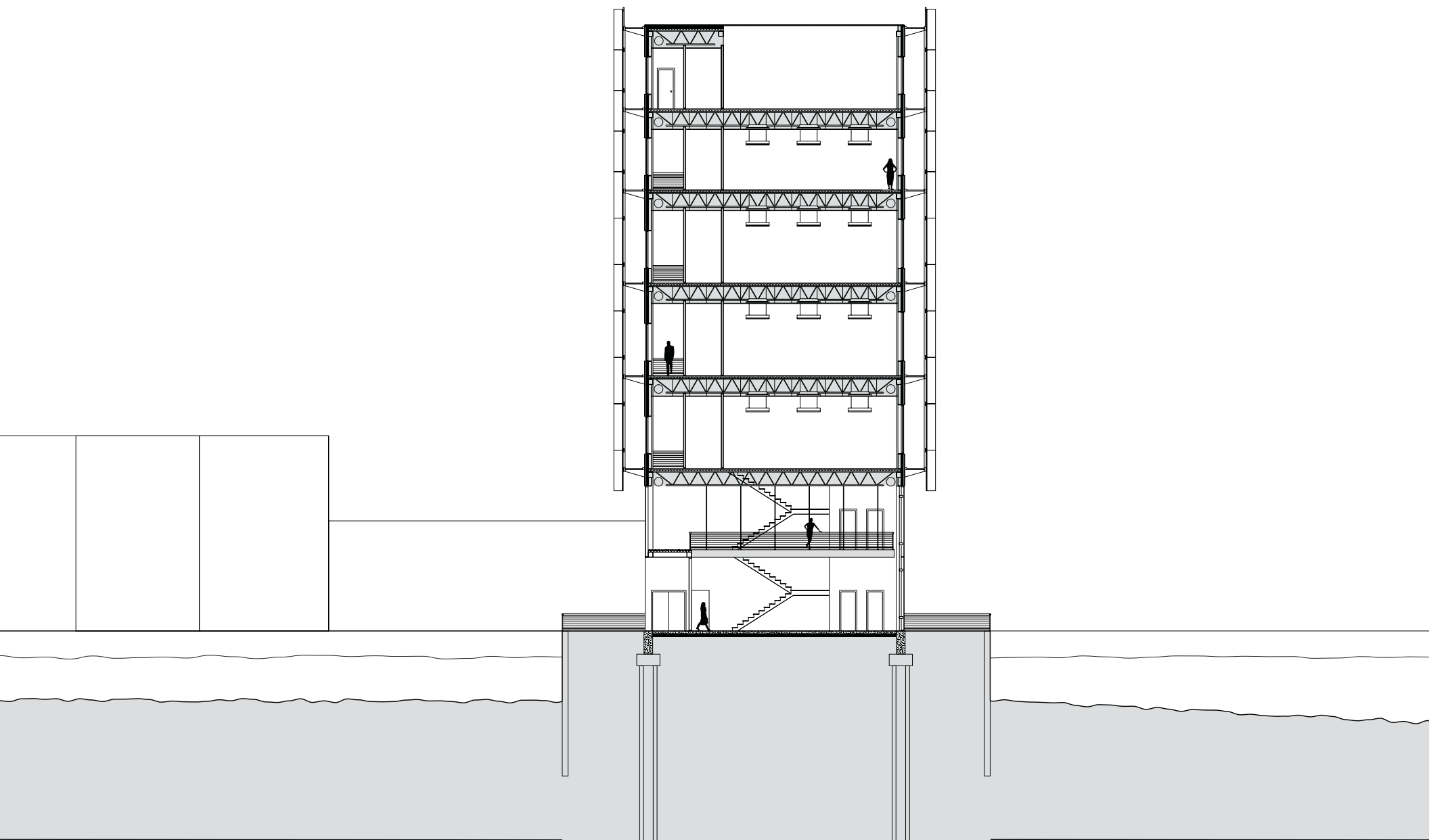


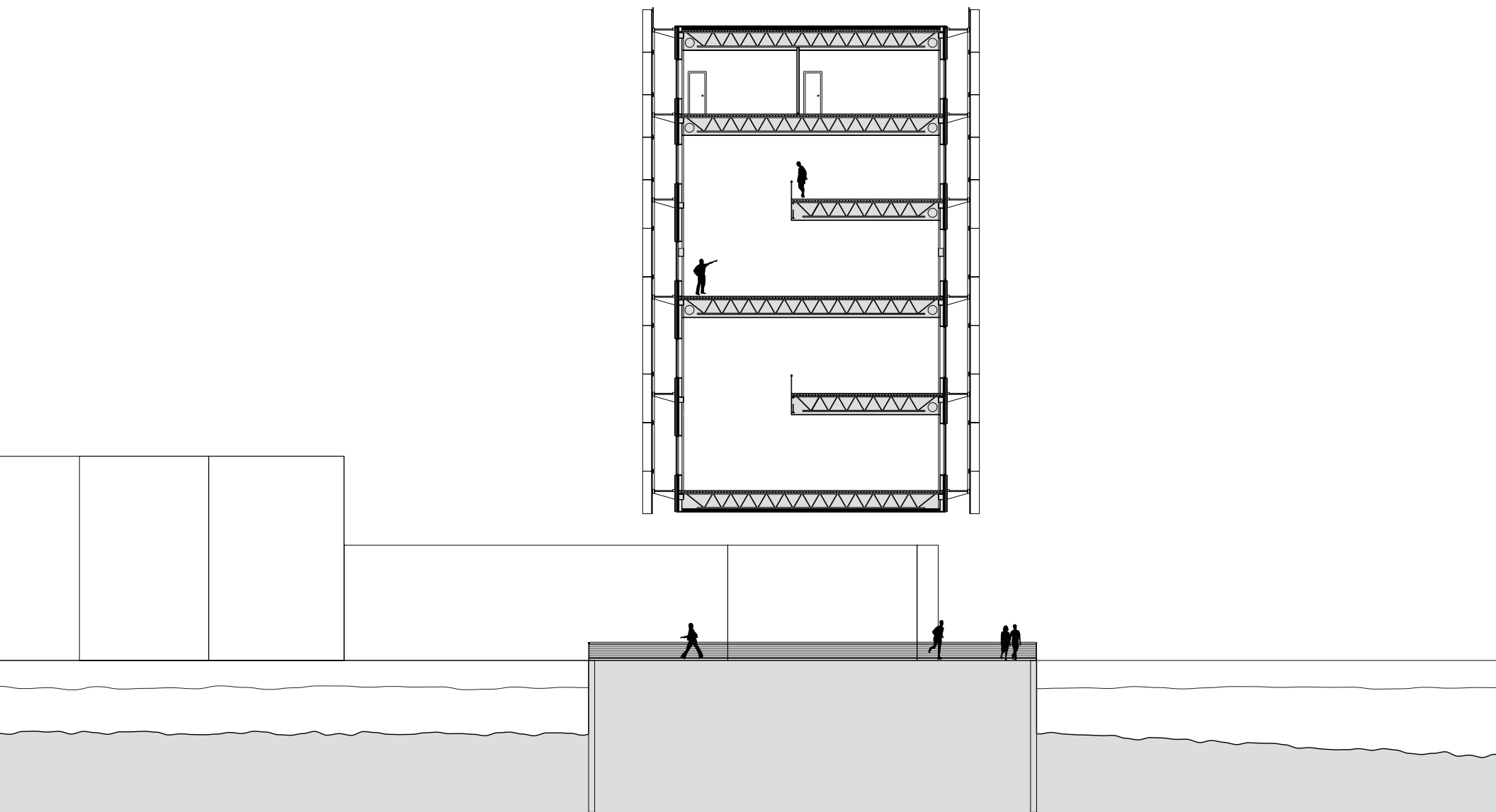




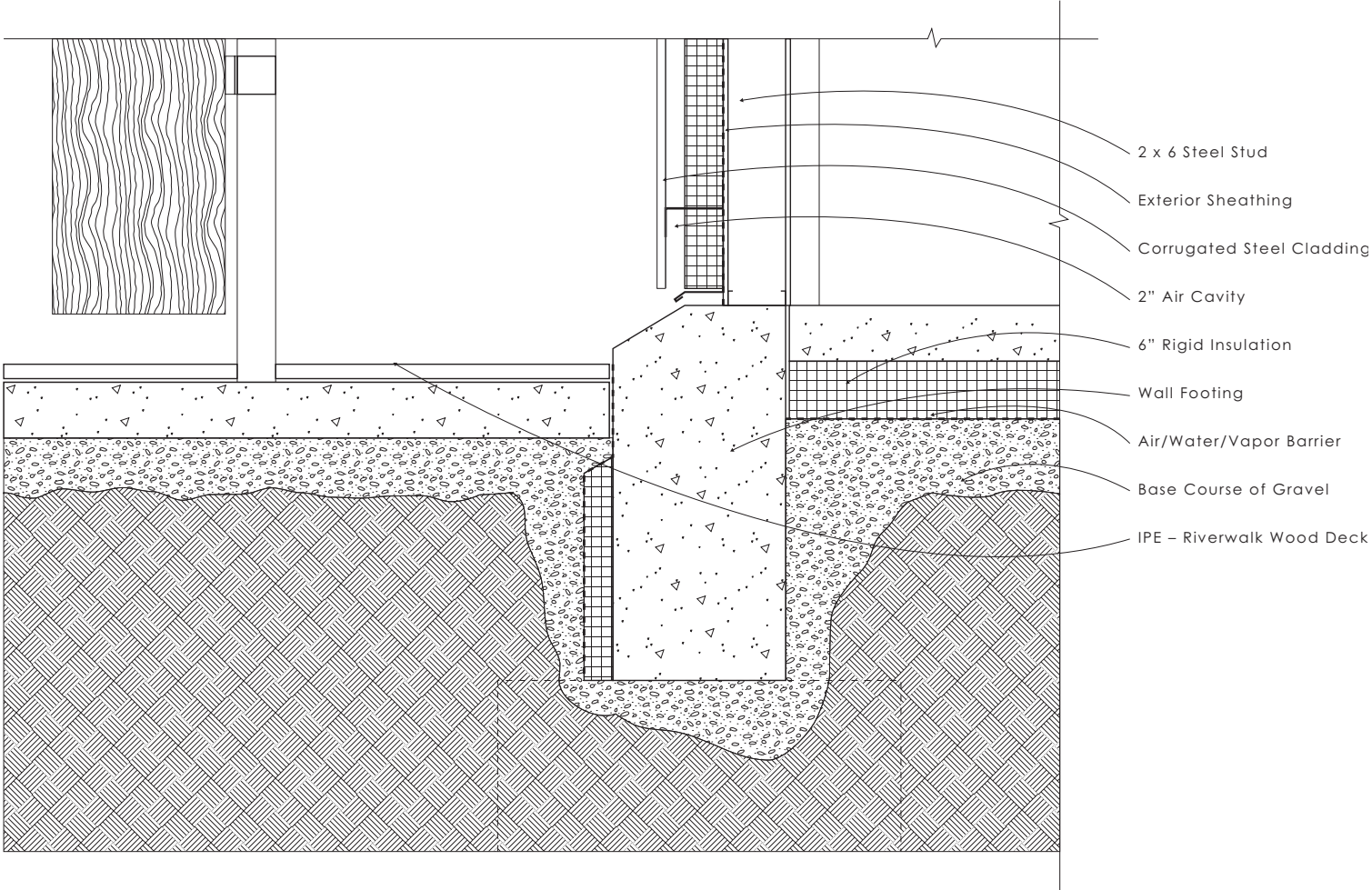




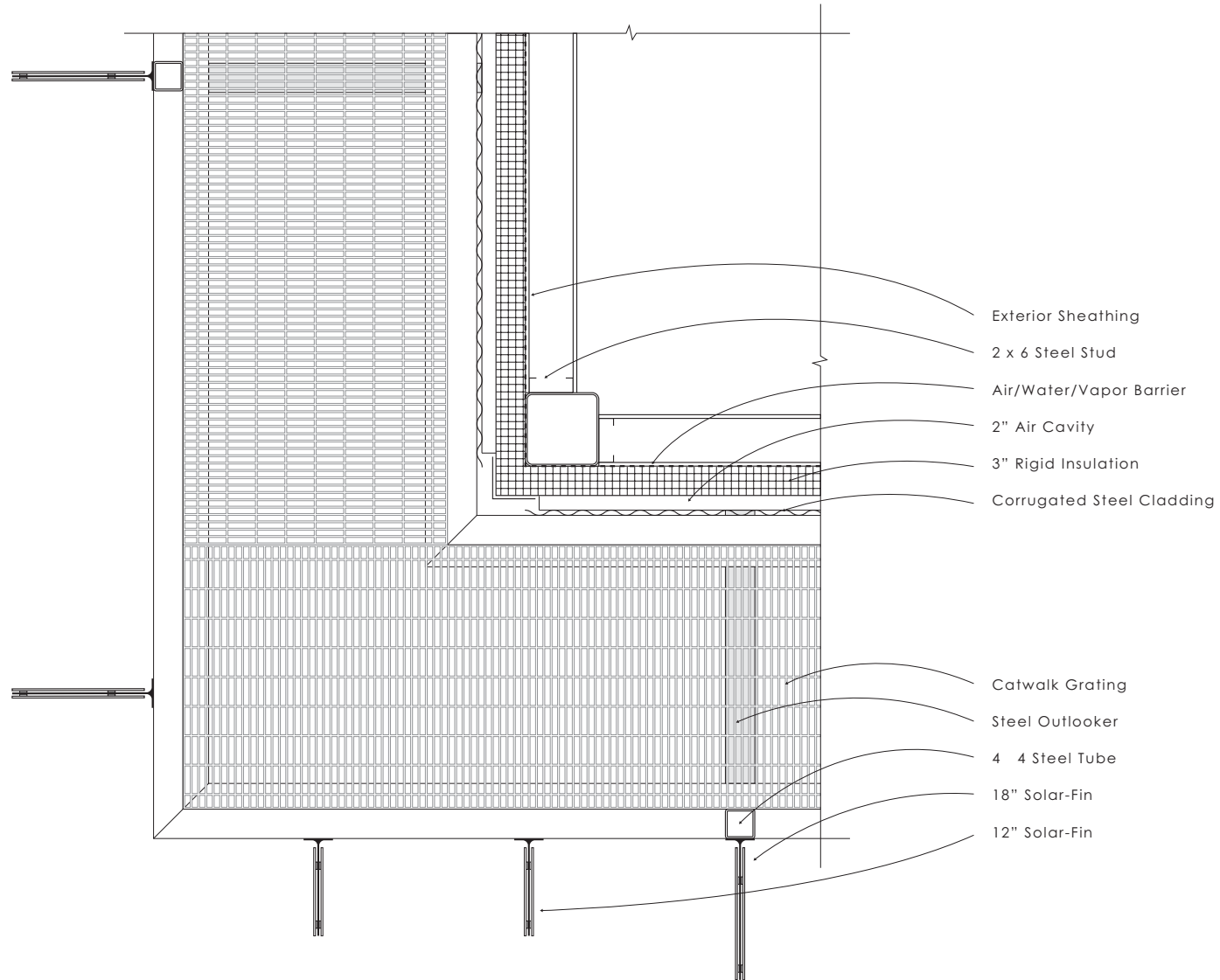


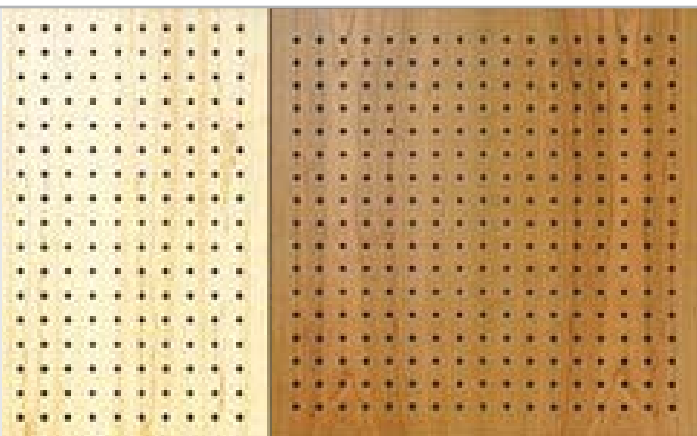
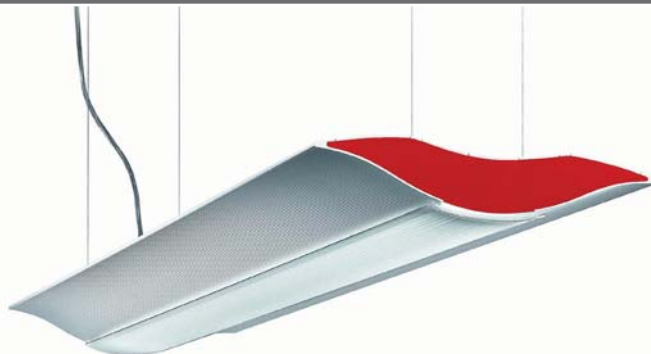


Sectional Detail Base

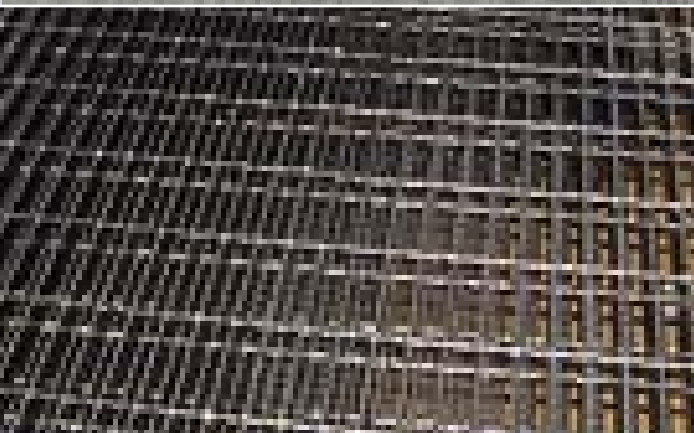
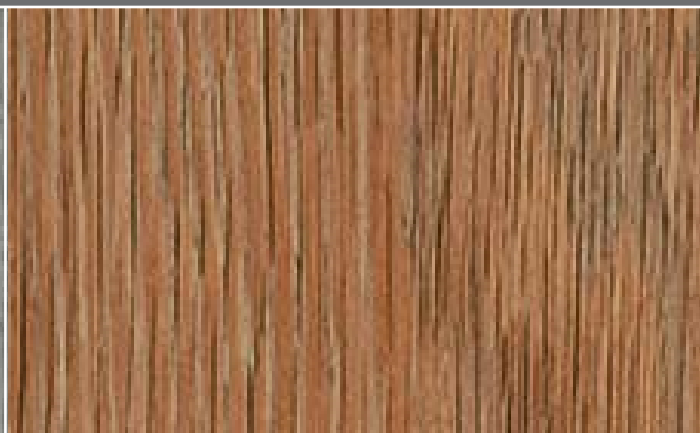


Plan Detail Turning Corner





Exterior Products



Easy Cleaning



1.4. Sizes and weight

The sizes and weight of the product are listed as follows:

Board size:

Length x Width

2.440 mm x 1.220 mm

Thicknesses

3, 6, 8, 10, 12, 14, 16, 18, 20, 22 mm

Board weight:

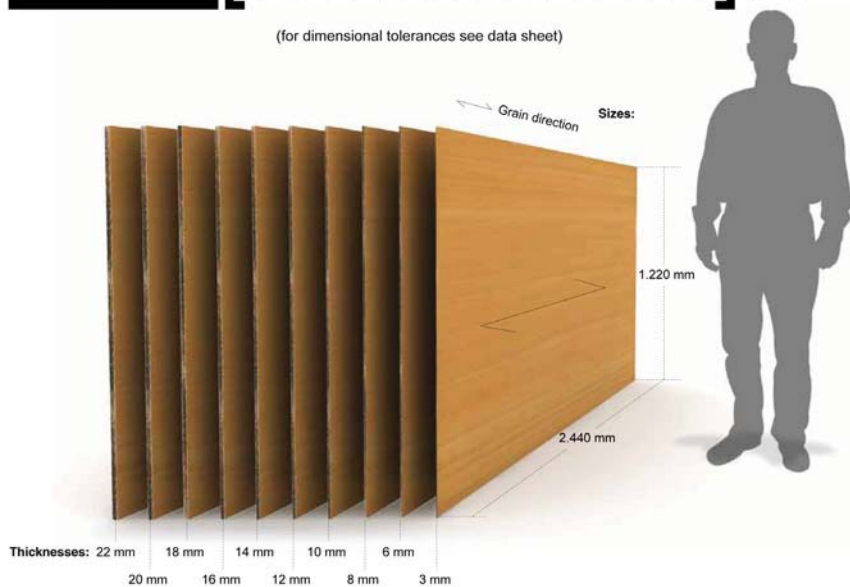
Board thickness	3	6	8	10	12	14	16	18	20	22	(mm)
Weight / surface unit	4,05	8,10	10,80	13,50	16,20	18,90	21,60	24,30	27,00	29,70	(kg / m ²)

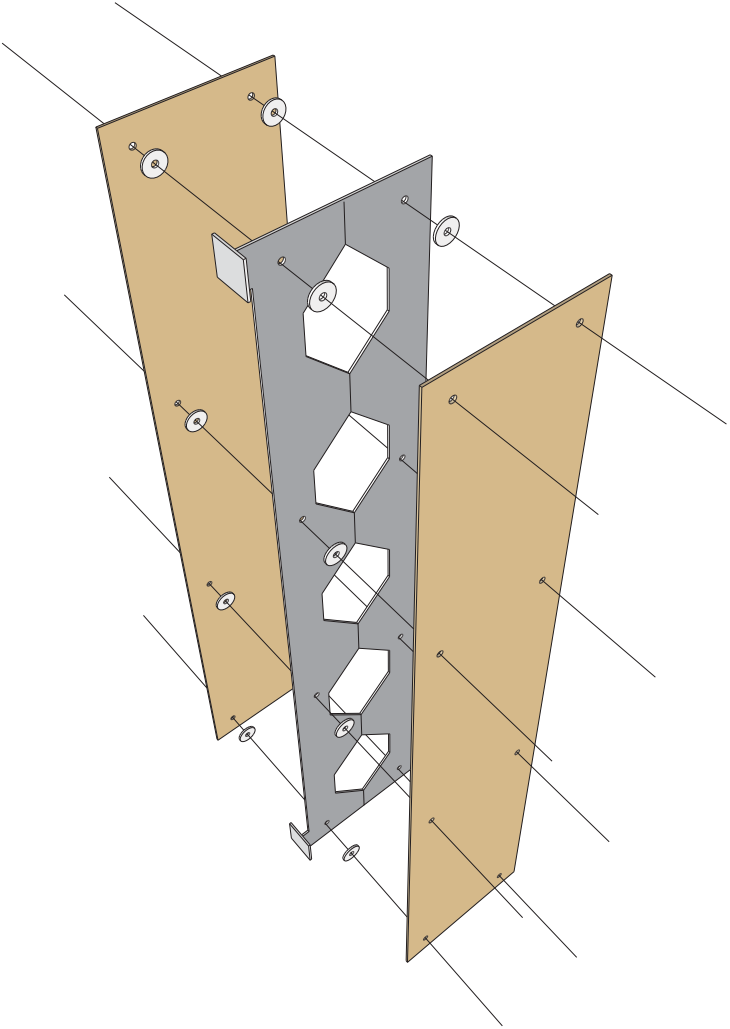
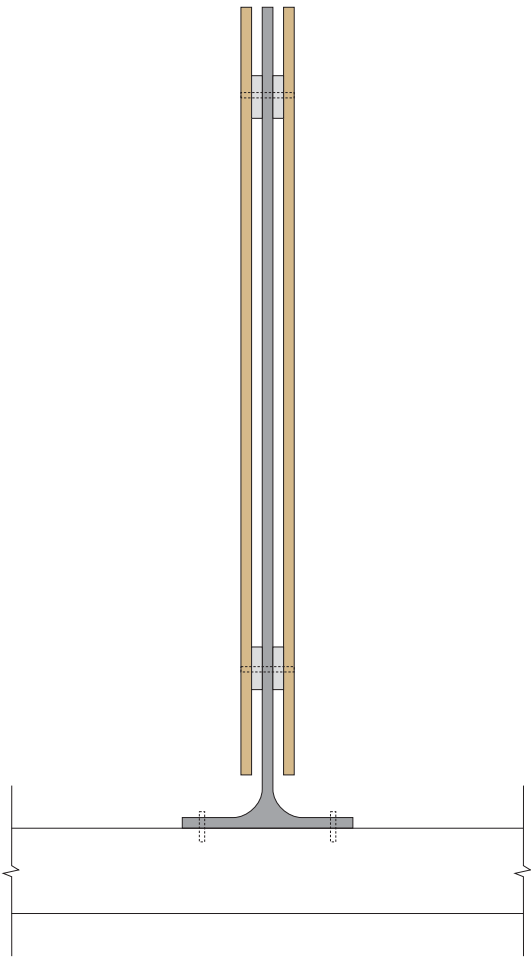
(for dimensional tolerances see data sheet)

Graffiti resistance

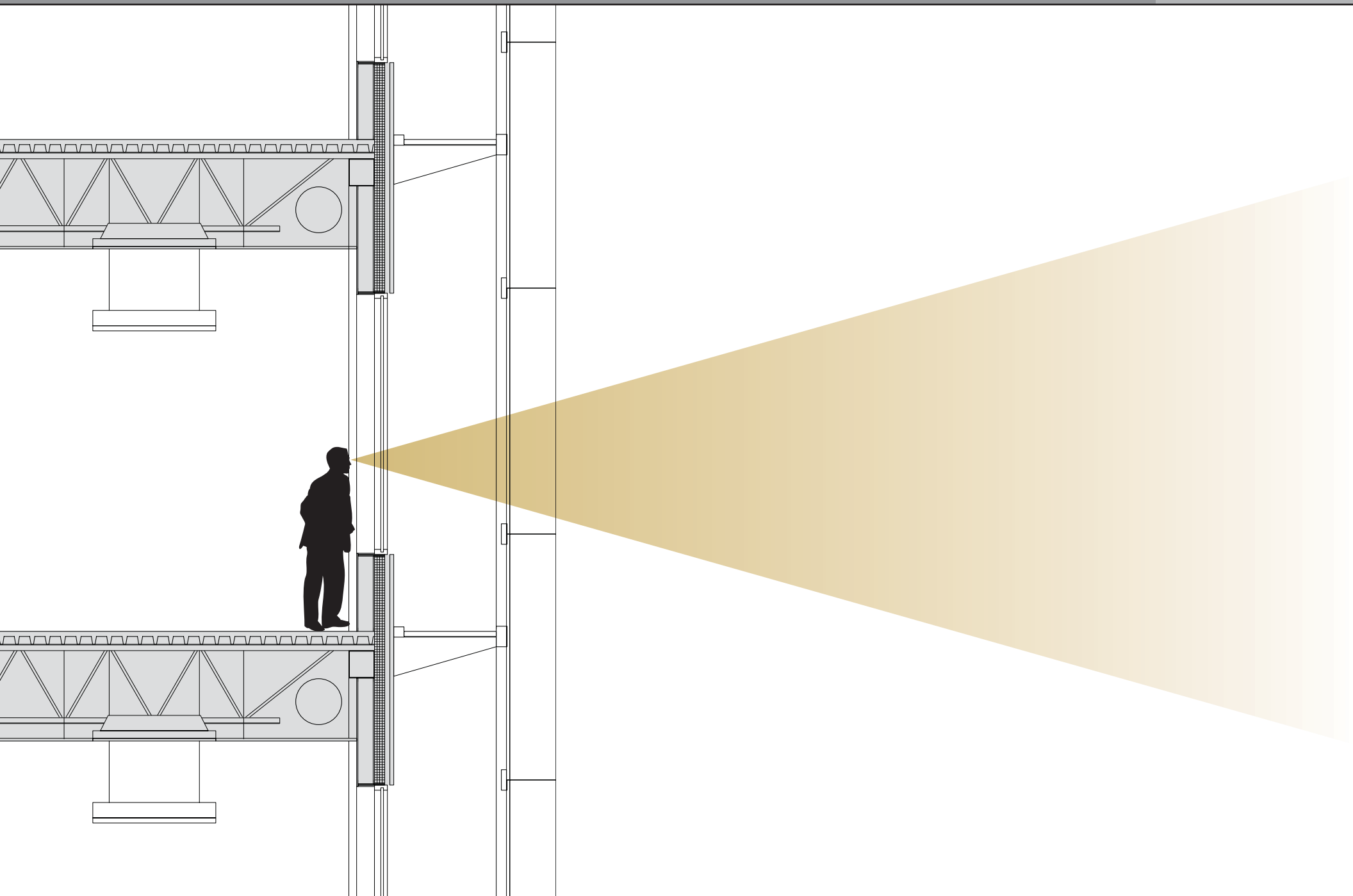


Fire-proof









Spring Equinox 8AM



Spring Equinox 9AM



Spring Equinox 10AM



Spring Equinox 11AM



Winter Solstice 8AM



Winter Solstice 9AM

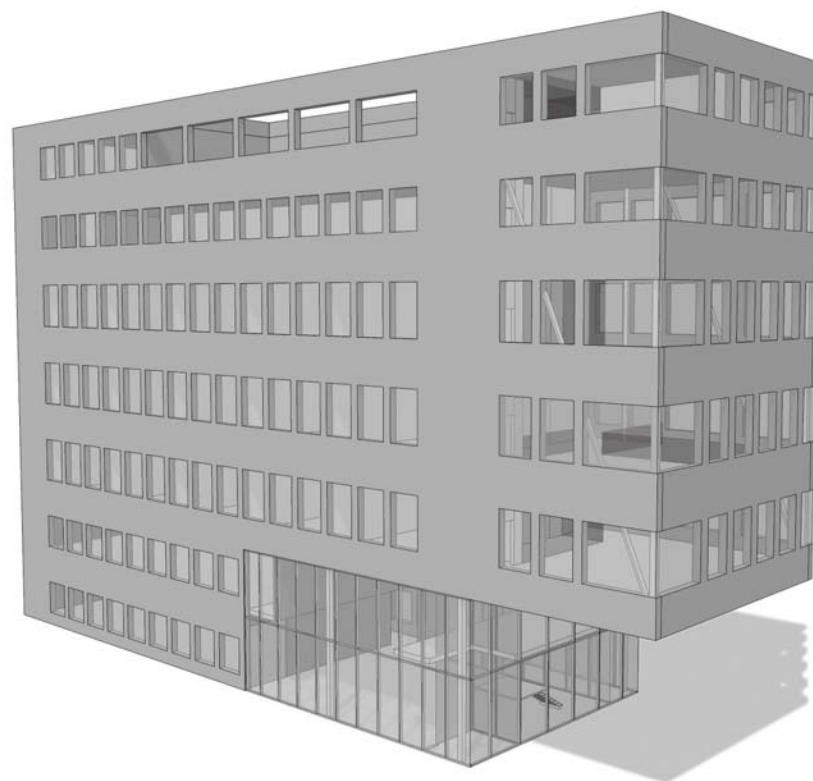


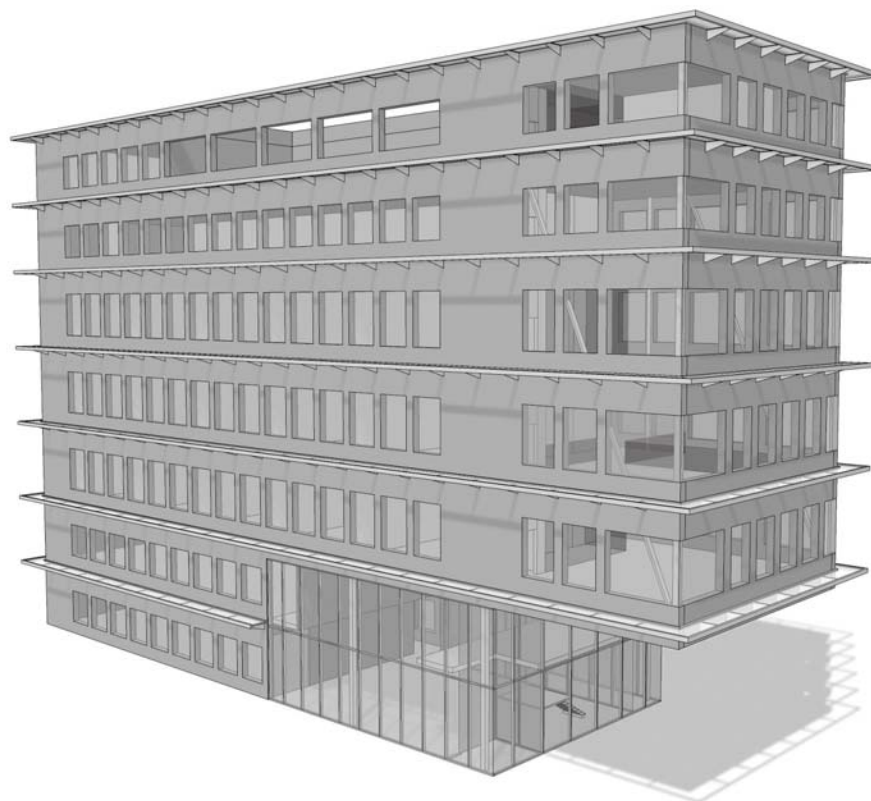
Winter Solstice 10AM

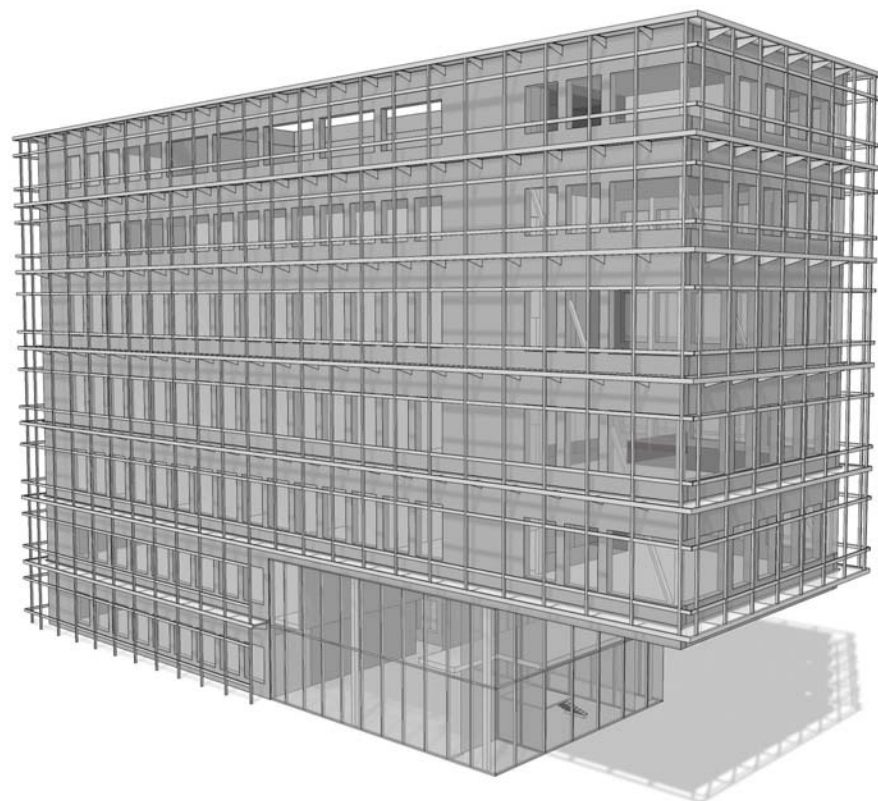


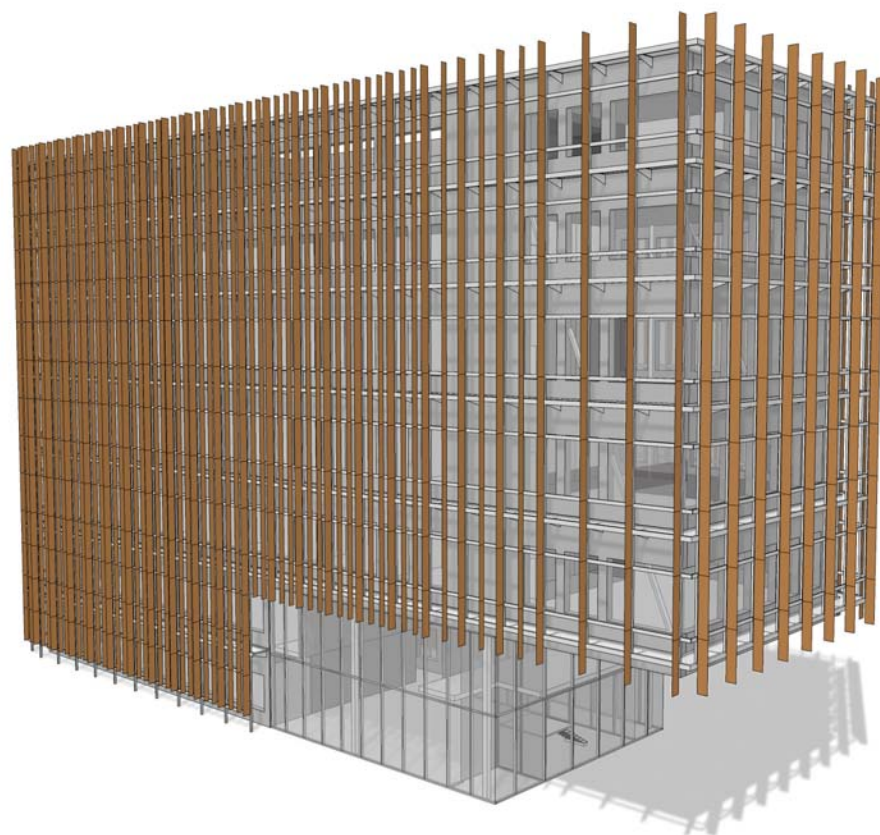
Winter Solstice 11AM

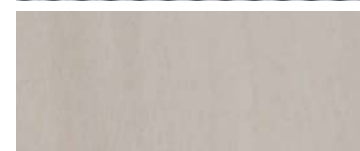
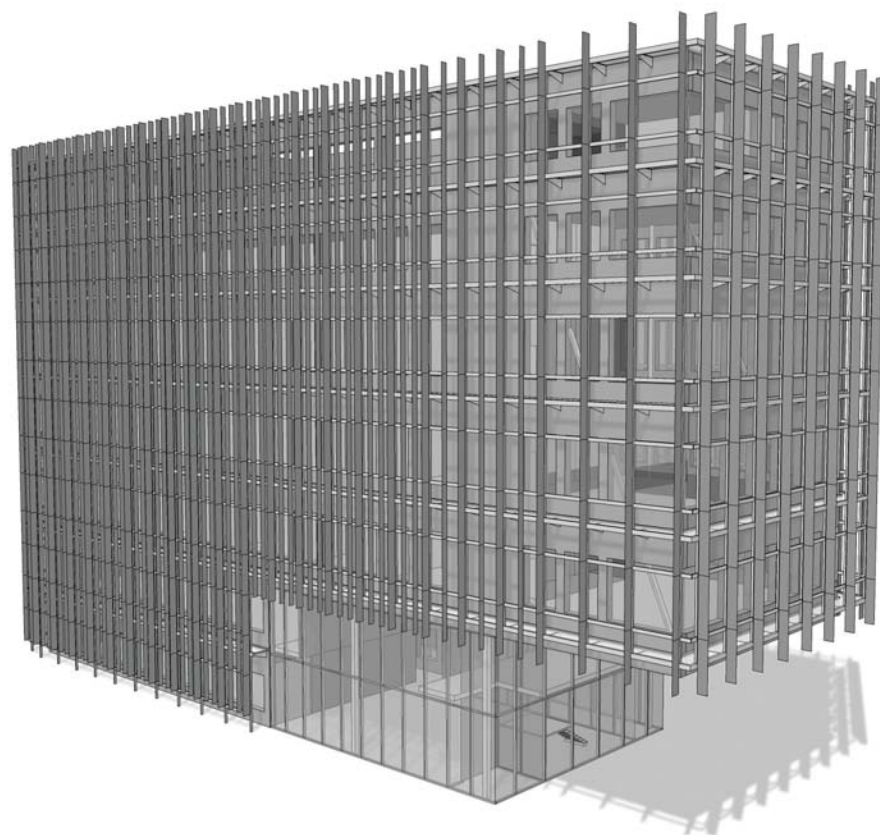


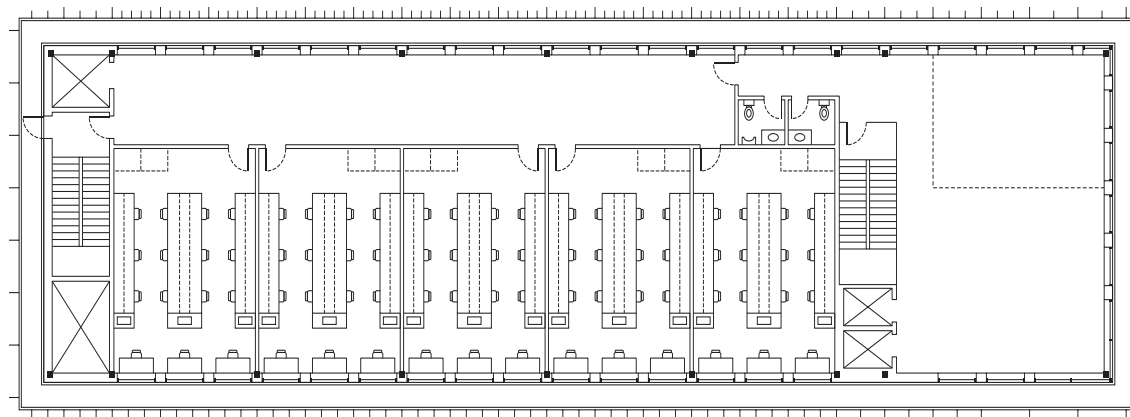
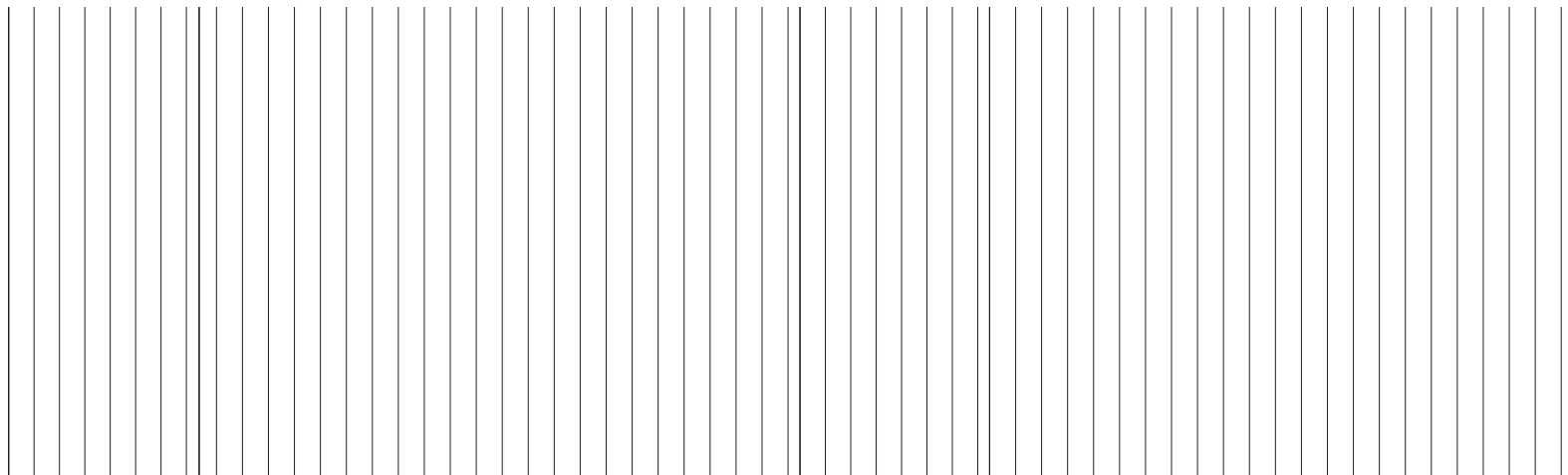


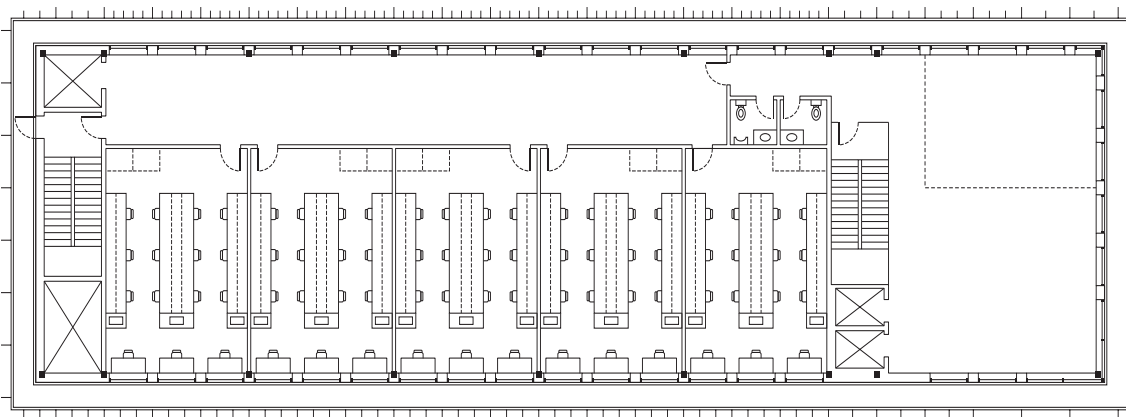
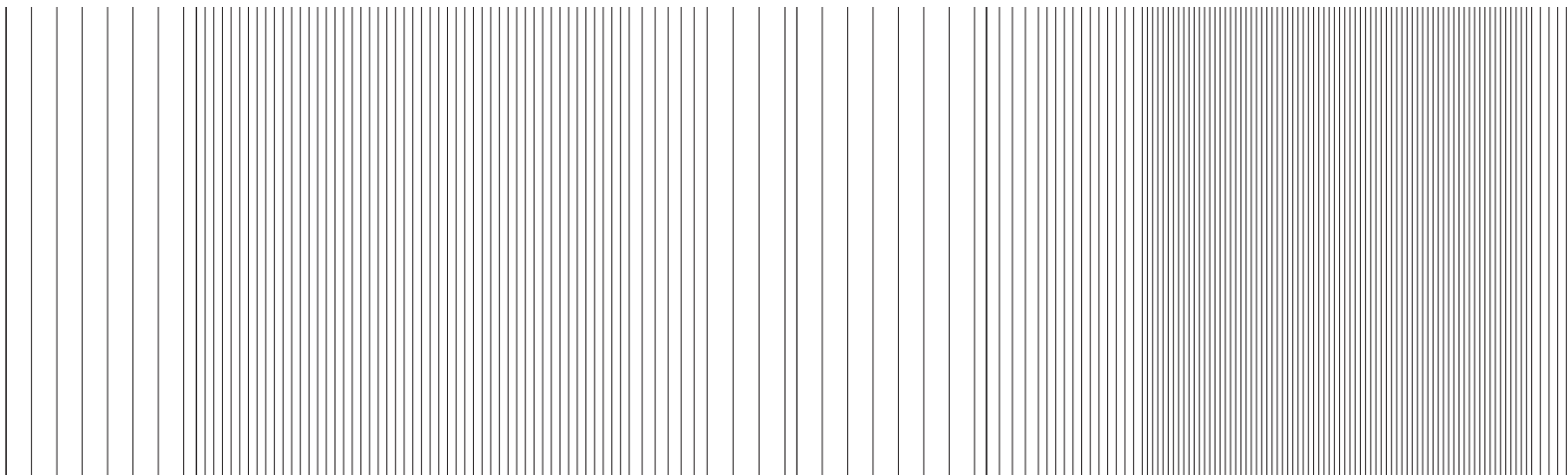


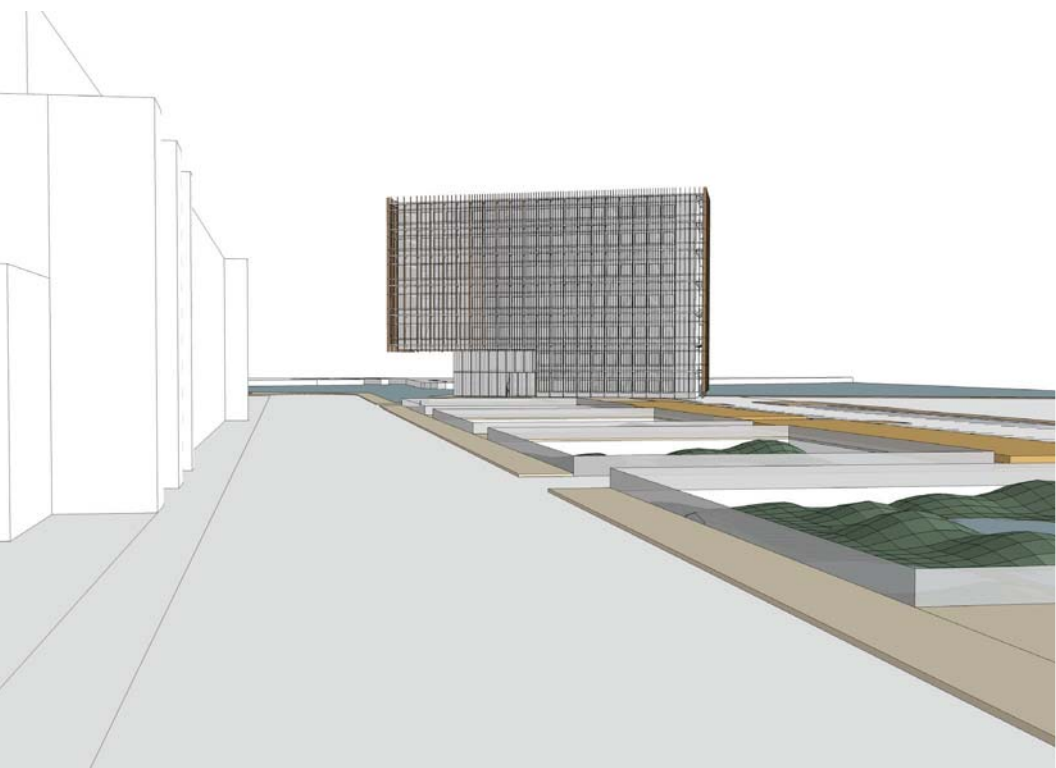






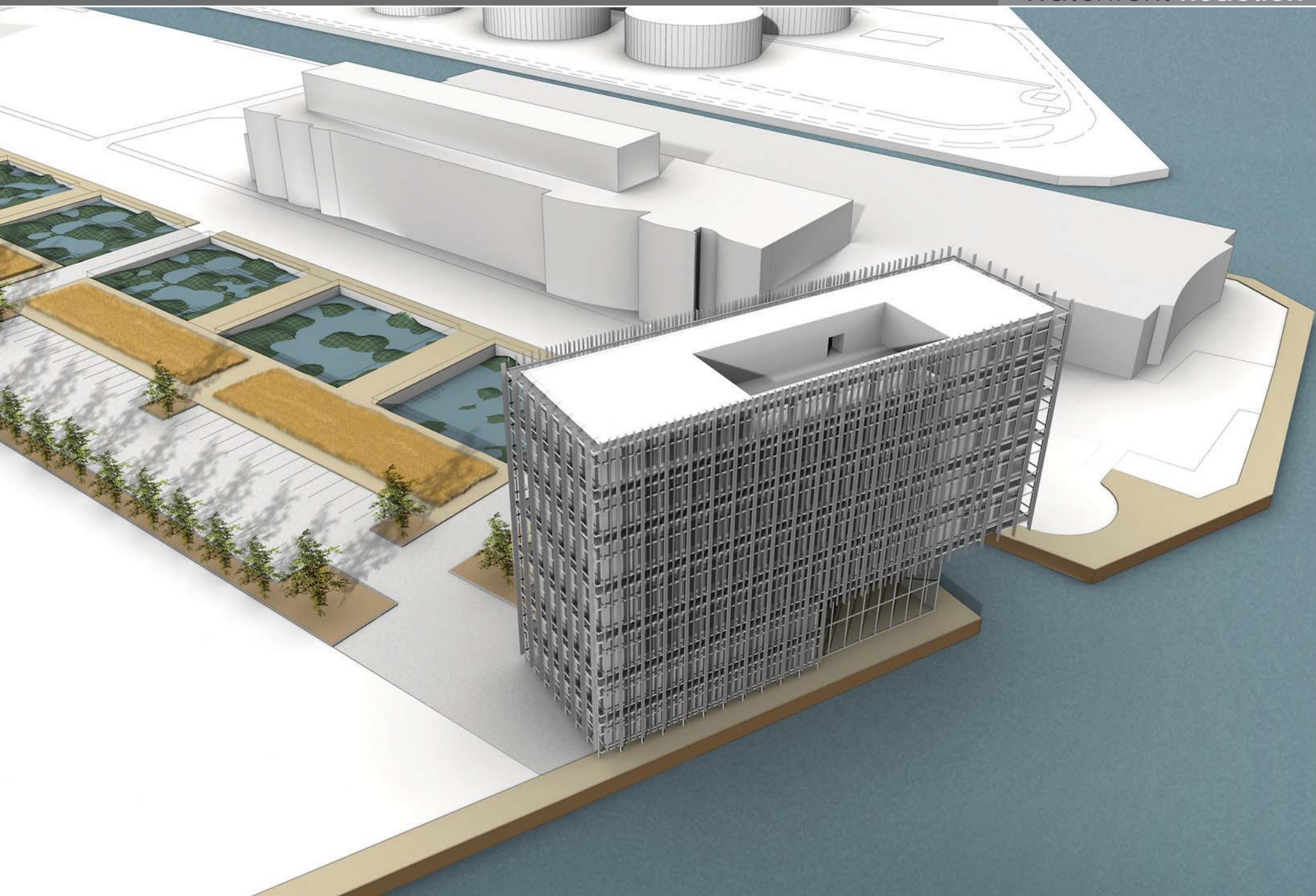






Facing East





The END!



Thank You for Coming!

