

A BIBLIOGRAPHY OF COMMERCIAL CONCERNS
PRODUCING ENDOCRINE PRODUCTS

By

CHARLES WILLIAM SEBALD

LIBRARY
SCHOOL OF PHARMACY

A Thesis Submitted for the Degree of
BACHELOR OF SCIENCE
(Pharmacy)

UNIVERSITY OF WISCONSIN

1943

TABLE OF CONTENTS

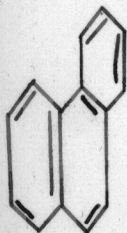
	Pages
Glossary	2-9
Corpus Luteum	10
Adrenal Cortex	11
Epinephrine	12
Estrogenic Hormone	13
Liver Extract	14
Mammary Substance	15
Orchic Extract	16
Orchic Substance	17
Ovarian Follicular Hormone	18
Ovarian Residue	19
Ovarian Substance	20
Pancreas Substance	21
Pancreatin	22
Parathyroid	23
Pineal Substance	24
Pituitary Anterior	25
Pituitary Posterior	26-27
Pituitary Whole	28
Placenta Substance	29
Progesterone	30
Progestin	31
Prolactin	32
Prostrate Substance	33
Spleen Extract	34
Spleen Substance	35
Stilbestrol	36
Suprarenal	37
Suprarenal Cortex	38
Suprarenal Medulla	39
Thymus	40
Thyroid	41-42
Index of Manufactures	43-46

INTRODUCTION

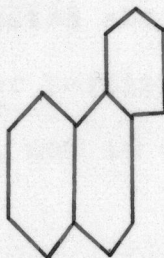
The great increase in the use of endocrine products in the practice of medicine has made this field a very profitable commercial venture. For this reason many companies are now manufacturing endocrine products and competing in the open market for the sectors favor. This has led to the introduction of many similar products under "coined" names which leads to great confusion in pharmaceutical practice.

This work is a bibliography of commercial concerns producing endocrine products in which modes of administration are listed under the gland concerned. The manufacturer preparing such mode of administration is in turn listed alphabetically below.

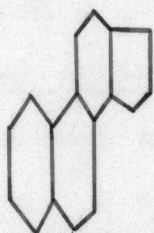
The steroids can all be regarded as derived¹ from a nucleus consisting of four fused rings, the nucleus being called cyclopentanopolycyclohexenanthrene.



Phenanthrene

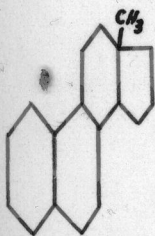


Polyhydrophenanthrene

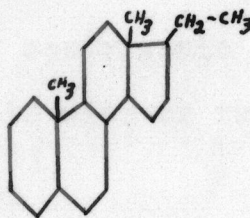


Cyclopentanoperhydrophenanthrene

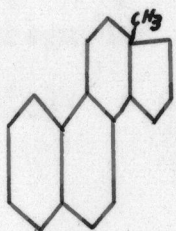
Simplified Formulas



Pregnane



Androstane



Oestrane

Glossary

Adrenal cortex. The outer portion of the adrenal or suprarenal gland; a small gland situated above the kidney.

This gland consists of an inner portion or medulla, in which adrenaline is generated, and an outer portion, the cortex.

Adrenalectomy. The operation of exercising one or both of the adrenal glands.

Adreno-genital syndrome. Symptoms indicating disfunction of the adrenal and genital glands.

Adrenosterone. A steroid triketone isolated from extracts of adrenal cortex.

Adrenotrophic hormone. Corticotrophic hormone.

Aetiocholan-3-al-17-one a very weak androgen stereoisomeric with androsterone.

Allen-Doisy unit. The quantity of oestrogenic substance sufficient to product oestrus in mice or rats deprived of their ovaries.

Amenorrhoea. The absence of menstruation.

Androgen. A generic term applied to the male sex hormones.

Androstane. The parent hydrocarbon from which the androgens may be regarded as derived.

Androstanediol. A dihydric alcohol derived from androstane.

Androstenedione. A weak androgen.

Androsterone. An androgen occurring to the extent of 0.25 mgm. per litre in male urine.

Anterior Pituitary. The nasal end of the pituitary. In this portion many protein substances are produced.

Antigonadotrophic serum. The serum from animals subjected to prolonged injection of gonadotrophic hormone until the effect becomes progressively less.

Antihormone. Prolonged injection of crude gonadotrophic extracts leads to the production of antihormone which can be detected in the serum.

Carcinogenic. Cancer - producing.

Cholesterol. A steriol which is the chief constituent of human gall-stones.

Chorionic gonadotrophins. The gonadotrophic factors excreted in human urine during pregnancy.

Climacteric. A critical period in life, frequently used to indicate menopause.

Corpus luteum. The yellow body resulting from the enlargement of the Graafian follicle after escape of the ovule.

Cortical hormones. Excreted by the cortex of the adrenal gland.

Corticosterone. A crystalline steriod isolated from extracts of the adrenal cortex.

Corticotrophic hormone. A thermostable, protein product isolable from hot aqueous extracts of the anterior lobes of pituitaries.

Cortin. A synonym for extracts of the adrenal cortex.

Cryptorchidism. The congenital failure of one or both testes to descend.

Dehydroisoandrosterone. A weak androgen isolated from male urine.

Deoxycorticosterone. May be isolated from adrenal extracts.

Diabetogenic hormones. Assumed to be present in extracts of pituitary anterior lobes.

Dihydrocholesterol. A saturated sterol accompanying cholesterol in natural sources.

Dihydroxystilbene. A synthetic substance having weak oestrogenic activity.

Dysmenorrhoea. Painful menstruation.

Endocrinology. The study of the endocrine glands, that is glands of internal secretion, and of internal secretions themselves.

Endocrinopathy. Disease due to impaired function of one or more of the endocrine glands.

Endometrium. The lining membrane of the uterus.

Eunuchism. The condition resulting from castration in the male.

Eunuchoidism. A condition of inability to produce sperms due to natural causes.

Equilenin. An oestrogenic substance excreted in the urine of mares toward the end of pregnancy.

Equilin. An oestrogenic substance excreted in the urine of mares toward the end of pregnancy.

Estrone. The American spelling for Oestrone.

Follicle - stimulating hormone. Responsible for inducing the ripening of the Graafian follicles.

Galactopoietic factor. An agent which stimulates the flow of milk.

Glycuronide. A glycosidic derivative of glycuronic acid.

Gonadectomy. Removal of the testes, as distinct from castration, which may indicate removal of testes or ovaries.

Gonadotrophic hormones. Hormones secreted by the anterior lobe of the pituitary gland.

Graafian follicle. A small spherical vesicle found in the cortical layer of the ovary, which produces an ovule.

Hexoestrol. A synthetic oestrogen.

Hypophyseal hormones. Those derived from the hypophysis or pituitary gland.

Hypophysectomy. The operation of excising the hypophysis or pituitary gland.

Hypopituitarism. Inefficient functioning of the pituitary gland.

Hypoplasia. A general term indicating defective formation.

Lactogenic hormones. Hormones produced by the anterior lobe of the pituitary capable of inducing the flow of milk.

Luteal hormone. Progesterone.

Lutein. The yellow fatty substance that fills the luteal cells, blood-vessels and connective tissue which together constitute the corpus luteum.

Male hormone. Androgen.

Mastopathia. A disease of the mammary gland.

Menopause. Loosely used to signify all changes that occur in the life of a woman during the transition from the end of the reproductive period to the beginning of senescence, the cessation of menstruation being the most conspicuous event.

Menorrhagia. An excessive menstrual flow.

Menstruation. Uterine bleeding occurring about every twenty-eighth day from puberty to the menopause, except during pregnancy or for pathological reasons.

Methyl testosterone. A synthetic substance having androgenic properties.

Metropathia. Any uterine disease.

Metropathia haemorrhagica. An infection of the uterus accompanied by bleeding.

Metrorrhagia. Uterine haemorrhage between menstrual periods.

Oestradiol. The principal oestrus-producing agent of follicular fluid.

Oestrin. A general term used to describe the group of naturally occurring oestrogens.

Oestriol. Oestratriene- 3:16:17- triol; It occurs in human pregnancy urine to the extent of about 1.3 mgm. per litre.

Oestriol glycuronide. The water-soluble form in which oestriol is mainly excreted.

Oestrogen. An oestrus-producing substance.

Oestrone. A pure oestrogenic substance present in the ovaries and certain other tissues of animals.

Oestrus. The term used to describe the changes associated with the onset of the sexual cycle in animals.

Olegomenorrhoea. Insufficiency of the menstrual flow.

Ovarian cycle. In humans about 28 days.

Ovariectomy. The excision of all ovarian tissue.

Ovulation. The maturing and liberation of ova.

Oxytocin. The protein-like fraction responsible for contraction of the uterus.

Pituitary gland. A small gland situated just above the roof of the mouth and just below the hypothalamus.

Pituitary hormones. The "chemical messengers" secreted in the pituitary gland, which, transmitted to the blood stream, stimulate the processes of other body glands.

Posterior pituitary. The posterior lobe of the pituitary gland.

Pregnancy urine hormone. Chorionic gonadotrophin.

Pregnanediol glycuronide. The water-soluble form in which pregnanediol is excreted in urine.

Progestrone. The hormone produced by the corpus luteum.

Progestin. A general term including not only progestrone but its derivatives.

Progestogenic. Tending to produce gestation.

Prolactin. A protein factor which can be isolated from aqueous extracts of anterior lobes of pituitaries and formerly believed to be the lactogenic factor of the pituitary.

Prolan. Gonadotrophic hormones.

Sodium pregnanediol glycuronidate. The water soluble form in which pregnanediol is excreted.

Steroid hormones. Those hormones whose chemical structure is related to the naturally occurring substances, the sterols.

Sterol. A member of a group of naturally occurring alcohols.

Stilbene. The parent hydrocarbon from which the synthetic oestrogens may be regarded as derived.

Stilboestrol. A synthetic product having oestrogenic properties on oral administration.

Synergistic effect. The effect resulting from the combined action of two or more substances.

Testicular hormone. Androgen.

Testosterone. A naturally occurring androgen which has been isolated as a white crystalline powder from testis tissue and from human urine.

Theelin. Oestrone.

Theelol. Oestrol.

Thyrotrophic hormone. A synthetic substance having oestrogenic properties.

Tumorigenic. Tumor producing.

Vasopressin. A protein-like water-soluble fraction responsible for the pressor activity of posterior pituitary lobe.

Corpus Luteum

Solution
Injection
Ampul

Vials

Abbott
Armour
Bellevue
Bishop
Cheplin
Chicago Pharmacal Co.
Endo
Fitch
Haist
Lakeside
Lilly
National Drug
Parke Davis and Co.
Pitman-Moore Co.
Sharp and Dohme
Salex
U.S. Standard Products Co.
Wilson

Armour
Cheplin
Chicago Pharmacal Co.
Endo
Harrower
Lakeside
Marvell
U.S. Standard Products Co.
Western Research Labs

Powder
Oral
Powder

Tablets

Enteric coated

Capsules

American Phar-
maceutical Co.
Abbott
Armour
Carnrick
Lilly
Parke Davis
and Co.
Premo
Purity
Sharp and
Dohme
Supreme
Wilson
Wyeth

American Phar-
maceutical Co.
Abbott
Carnrick
Lilly
National Drug
Parke Davis
and Co.
Premo
Purity
Sharp and
Dohme
Shores
Supreme
U.S. Standard
Products Co.
Wilson

Abbott
Armour
Lilly
Parke Davis
and Co.
Shores

Abbott
Armour
Parke Davis
and Co.
Premo
Sharp and
Dohme
Supreme
Wilson

Adrenal Cortex

Solution
Injection

Ampul

Bellevue
Christina
Endo
Upjohn
Verax

Vial

Bellevue
Harrower
Lakeside
Pitman-Moore
Wilson

Power
Oral
Powder

Tablet

Lakeside

Capsule

Pitman-Moore

Epinephrine

Solution
Injection
Ampuls

Winthrop
Wilson

Vials

Parke Davis and Co.

Powder
Oral

Powder

Wilson

Capsule

Tablet

Winthrop

Estrogenic Hormone

Solution
Injection
Ampul

Vial

Smith
Shering
Verax Products
Ayerst, McKenna and
Harrison
United Drug
Breon
Cheplin
Chicago Pharmacal Co.
Christina
Endocrine Food
Fitch
Haist
Harvey
Lilly
Kirk
Lakeside
McNeil
National Drug
Reed and Carnrick
Sharp and Dohme
Sherman
Solex
Strassenburgh
Upjohn
U.S. Standard Products
Wilson
Endo
Abbott

Verax Products
Ayerst, McKenna and
Harrison
Cheplin
Chicago Pharmacal Co.
Christina
Endocrine Food
Fitch
Haist
Harvey
Kirk
Lakeside
McNeil
Professional Products Co.
Reed and Carnrick
Sherman
Solex
Strassenburgh
U.S. Standard Products
Wilson
Endo
Smith

Powder
Oral
Tablet

Capsule

Wax

Powder

Supposit.

Lakeside
Reed and
Carnrick
Van Patten
Endo
Buffington
Harrower
Smith

Abbott
Ayerst,
McKenna and
Harrison
Strassenburgh
Sharp and
Dohme
Wilson

Cheplin Lilly

Sharp and Dohme
Upjohn
Roche-Organon
Abbott
Lilly
Armour

Liver Extract

Solution
Injection
Ampul

Vial

Armour
Bishop
Breon
Chappel
Cheplin
Christina
Endo
Fitch
Haist
Harvey
Lakeside
Lilly
Loeser
Massengill
National Drug
Nordmark-Hepatrat
Parke Davis and Co.
Premo
Reed and Carnrick
Rorer
Smith
Solex
Valentine
Verax
Wilson

American Pharmaceutical Co.
American Parentasol Labs.
Armour
Bellevue
Bishop
Cheplin
Christina
Drug Products
Endo
Fitch
Harrower
Harvey
Lakeside
Lederle
Loeser
Massengill
Merrell
Metro
Parke Davis and Co.
Pitman-Moore
Premo
Professional products
Reed and Carnrich
Sherman
Smith
Solex
Squibb
U.S. Standard Products
Verax

Powder
Oral
Powder

Capsule

Tablet

Armour
Carnrick
Lilly
Nordmark-Hepatrat
Parke Davis and Co.

Abbott
Carnrick
Cavendish
Clinic Line
Endo
Massengill
National Drug
Parke Davis and Co.
Premo
Purity
Squibb
Upjohn
U.S. Standard Products
Wilson

Carnrick

Mammary Substance

Solution
Injection
Ampul

Solex

Powder
Oral
Powder

Tablet

Capsule

Enteric coated

American Pharma-
ceutical Co.

American Pharma-
ceutical Co.

Miller

Parke Davis and
Co.

Armour

Armour

Lilly

Lilly

Miller

Parke Davis

Parke Davis
and Co.

and Co.

Premo

Premo

Supreme

Supreme

Wilson

Orchic Extract

Solution
Injection
Ampul

Vial

Armour
Fitch
Haist
U.S. Standard Products
Wilson

Armour
Harrower
Lakeside
U.S. Standard Products

Orchie Substance

Solution
Injection
Ampul

Vial

Bellevue

Bellevue
Harrower

Powder
Oral
Powder

Tablet

Enteric coated

American Pharma-
ceutical Co.
Armour
Lilly
Parke Davis and
Co.
Supreme
Wilson

American Pharma-
ceutical Co.
Abbott
Armour
Lilly
Parke Davis and Co.
Premo
Shores
Supreme
U.S. Standard
Products
Wilson

Lilly
Parke Davis and Co.
Shores

Ovarian Follicular Hormone

**Solution
Injection
Ampul**

Bishop

Ovarian Residue

Solution
Injection
Ampul

Vial

Hynson, Westcott
and Dunning
Lilly
Parke Davis and Co.
U.S. Standard Products
Wilson

Powder
Oral
Powder

Tablet

Enteric coated

Capsule

Armour
Hynson, West-
cott and
Dunning
Lilly
Parke Davis
and Co.
Purity
Supreme
Wilson

Abbott
Armour
Hynson-Westcott
and Dunning
Lilly
Parke Davis and
Co.
Shores
U.S. Standard
Products
Wilson

Armour
Lilly
Parke Davis and Co.
Shores

Armour
Parke Davis
and Co.
Wilson

Ovarian Substance

Solution
Injection
Ampul

Vial

Abbott
Associated Physicians
Labs.
Armour
Bellevue
Cheplin
Endo
Fitch
Haist
Hynson, Westcott
and Dunning
Marvell
National Drug
Parke Davis and Co.
Pitman-Moore
Sharp and Dohme
Sherman
U.S. Standard Products
Wilson
Western Research Labs.

Associated Physicians
Labs.
Armour
Bellevue
Cheplin
Endo
Harrower
Lakeside
Lilly
National Drug
Sherman

Powder
Oral
Powder

Tablet

Capsule

Enteric coated

American Phar-
maceutical Co.
Abbott
Armour
Carnrick
Hyson, West-
cott and
Dunning
Lilly
Parke Davis
and Co.
Premo
Purity
Supreme
Wilson

American Phar-
maceutical Co.
Armour
Carnrick
Endocrine Food
Harrower
Hynson, West-
cott and
Dunning
Lilly
National Drug
Premo
Purity
Sharp and Dohme
Shores
Stoddard
Supreme
Upjohn
U.S. Standard
Products
Wilson
Western Research
Labs

Abbott
Armour
National Drug
Parke Davis
and Co.
Premo
Sharp and
Dohme
Supreme
Wilson

Abbott
Armour
Lilly
National Drug
Parke Davis
and Co.
Premo
Shores

Pancreas Substance

Powder
Oral
Powder,

Tablet

Capsules

Armour
Premo
Wilson

Armour
Wilson

Abbott

Pancreatin

Powder
Oral
Powder

Armour
Lilly
Merch
New York Quine
and Chemical
Works, Inc.
Wilson

Tablets

Abbott
Lilly
Seal-Ins
Laboratories

Enteric coated

Lilly

Parathyroid

Powder
Oral
Powder

American Pharma-
ceutical Co.
Armour
Carnrick
Lilly
Supreme
Wilson

Tablets

American Pharm-
aceutical Co.
Armour
Carnrick
National Drug
Parke Davis and
Co.
Sharp and Dohme
Shores
Wilson

Capsules

Abbott

Enteric coated

Abbott
Parke Davis
and Co.
Shores

Solution
Injection
Ampuls

Lilly

Vials

Lilly

Pineal Substance

Powder
Oral
Powder

Tablets

Armour
Wilson

Armour
Parke Davis and Co.

Pituitary Anterior

Solution
Injection
Ampuls

Vials

Associated Physicians Labs.	Associated Physicians Labs.
Amroun	Cheplin
Bellevue	Christina
Cheplin	Harrower
Chicago Pharmacal Co.	Lakeside
Christina	Marvell
Endo	Sherman
Fitch	Squibb
Haist	U.S. Standard Products Co.
Lilly	Verax
National Drug	
Roche-Organon	
Sharp and Dohme	
Sherman	
Verax	
Western Research Laboratories	

Powder
Oral
Powder

Tablet

Enteric Coated

American Pharmaceu- tical Company	American Pharma- ceutical Co.	Lilly
Armour	Abbott	Parke Davis and Co.
Carnrick	Armour	Premo
Lilly	Bunting Drug Co.	Shores
Parke Davis and Co.	Carnrick	
Premo	Lilly	
Purity	Marvell	
Sharp and Dohme	National Drug	
Supreme	Parke Davis and Co.	
Wilson	Premo	
Wyeth	Sharp and Dohme	
	Shores	
	Supreme	
	Western Research Laboratories	
	Wilson	

Pituitary Posterior

Solution Injection Obstetrical Ampuls	Surgical Ampuls	Obstetrical Vials	Surgical Vials
Abbott	Abbott	Cheplin	Cheplin
Armour	Armour	Chicago	Harrower
Bishop	Breon	Pharmacal Co.	Sherman
Breon	Cheplin	Endo	
Cheplin	Christina	Lakeside	
Chicago Pharm- acal Co.	Endo	Marvell	
Christina	Harrower	Sherman	
Endo	Harvey	U.S. Standard Products Co.	
Harvey	Lakeside		
Lakeside	Lilly		
Lilly	Loeser		
Loeser	National Drug		
National Drug	Parke Davis and Co.		
Parke Davis and Co.	Pitman-Moore		
Pitman-Moore	Premo		
Premo	Sharp and Dohme		
Sharp and Dohme	Sherman		
Sherman	Solex		
Solex			

Solution
Injection
Obstetrical Ampuls

Surgical Ampuls

Squibb
Upjohn
U.S. Standard Products
Co.
Verax
Warner
Wilson
Western Research Labs.
Wyeth

Upjohn
U.S. Standard Products Co.
Warner
Wyeth

Pituitary Posterior

Powder
Oral
Powder

Tablets

Enteric coated

Armour
Carnrick
Lilly
Wilson

Armour
Burrough-Wellcome
and Co.
Carnrick
Lilly
Parke Davis and Co.
U.S. Standard
Products Co.
Wilson

Lilly
Parke Davis and Co.

Pituitary, Whole

Solution
Injection
Ampuls

Vials

Associated Physicians
Labs.
Armour

Associated Physicians
Labs.
Harrower
Lakeside
Sherman

Powder
Oral
Powder

Tablet

Enteric coated

Capsules

American Pharm-
aceutical Co.
Abbott
Armour
Carnrick
Lilly
Parke Davis
and Co.
Premo
Purity
Sharp and
Dohme
Supreme
Wilson
Wyeth

American Pharm-
aceutical Co.
Armour
Burroughs Wel-
come and Co.
Carnrick
Endocrine Food
Lilly
National Drug
Parke Davis
and Co.
Premo
Shores
Supreme
U.S. Standard
Products Co.
Wilson
United Drug

Abbott
Armour
Lilly
National Drug
Parke Davis
and Co.
Premo
Purity
Shores

Abbott

Placenta Substance

Powder
Oral
Powder

Tablet

Capsules

Enteric coated

Armour
Lilly
Parke Davis
and Co.
Wilson

Armour

Parke Davis and
Co. Parke Davis and Co.

Progesterone

Solution Injection Ampuls	Vials	Powder Oral Tablets
Armour	Bellevue	Roche - Organon, Inc.
Bellevue	Endocrine Foods	
Bishop	Metro	
Breon	Miller	
Fitch		
Kalish		
Massengill		
Metro		
Miller		
Schieffelin		
Upjohn		
Professional Products Co.		
Carnrick		
Parke, Davis and Co.		
Verax		

Progestin

Solution
Injection
Ampuls

Vials

Abbott
Kirk
Lakeside
Roche-Organon
Upjohn

Lakeside
U.S. Standard Products Co.

Prolactin

Solution
Injection
Ampuls

Schering

Vials

Armour

Prostrate Substance

Powder
Oral
Powder

Tablet

Capsules

Armour
Premo
Wilson

Armour

Wilson

Spleen Extract

Solution
Injection
Ampuls

Vials

Armour
Bellevue
Lakeside
Sherman
Solex
United Laboratories
Wilson

Armour
Bellevue
Lakeside
Sherman
U.S. Standard Products Co.

Spleen Substance

Powder
Oral
Powder

Tablet

Capsule

Armour
Wilson

Armour

Armour
Wilson

Stilbestrol

Solution
Injection
Ampuls

Vials

Armour
Breon
Drug Products
Endo
Lakeside
Lederle
Lilly
Pitman-Moore
Premo
Sharp and Dohme
Solex
Squibb
Upjohn
Verax
Winthrop
Wyeth

Drug Products
Sherman

Powder
Oral
Powder

Tablet

Enteric coated

Suppositories

Capsule

American Pharm-
aceutical Co.
Armour
Burroughs Wel-
come Co.
Blue Line
Breon
Carnrick
Ciba
Lakeside
Lilly
Merrell
Pitman-Moore
Schieffelin
Sharp and Dohme
Smith
Squibb
Strassenburgh
Van Patten
Van Plet and
Brown
Winthrop
Wyeth

American
Pharmaceu-
tical Co.
Lilly
Premo

Breon
Lilly
Premo
Sharp and
Dohme
Squibb
Upjohn
Winthrop
Wyeth

Lederle

Suprarenal

Powder Oral Powder	Tablet	Enteric coated	Capsule
American Pharm- aceutical Co.	American Pharm- aceutical Co.	Lilly	Parke Davis and Co.
Armour	Armour	National Drug	Armour
Carnrick	Carnrick	Parke Davis and Co.	
Lilly	Endocrine Food	Shores	
Parke Davis and Co.	Lilly		
Purity	National Drug		
Supreme	Parke Davis and Co.		
Wilson	Premo		
	Shores		
	Supreme		
	U.S. Standard Products Co.		
	Wilson		

Suprarenal Cortex

Solution
Injection
Ampul

Vial

Armour

Armour

Powder
Oral
Powder

Tablet

Enteric coated

Capsule

Carnrick
Wilson

Armour
Carnrick
U.S. Standard
Products Co.
Wilson

Armour

Wilson

Suprarenal Medulla

Powder
Oral
Powder

Armour
Wilson

Tablet

Armour

Thymus

Solution
Injection
Ampul

Vial

Fitch

Powder
Oral
Powder

Tablet

Enteric Coated

Capsules

American Pharm-
aceutical Co.

Armour

Parke Davis
and Co.

Armour

Armour

Lilly

Parke Davis
and Co.

Premo

Wilson

Thyroid

Solution
Injection
Ampul

Vial

Fitch
Solex

Harrower

Powder
Oral
Powder

Tablet

Enteric coated

Capsule

American Pharmaceutical Co.	American Pharmaceutical Co.	Abbott	Armour Parke Davis and Co.
Abbott	Abbott	Armour	Premo
Armour	Armour	Bellevue	Supreme
Carnrick	Bellevue	Endo	Wilson
Hynson, Westcott and Dunning	Bishop	Lilly	
Lilly	Burroughs-Wellcome	McNeil	
Parke Davis and Co.	Carnrick	National Drug	
Premo	Cheplin	Parke Davis and Co.	
Purity	Clinic Line	Pitman-Moore	
Sharp and Dohme	Endo	Premo	
Squibb	Endocrine Food	Sherman	
Supreme	Hynson, Westcott and Dunning	Shores	
Wilson	Harrower	Squibb	
Wye th	Lakeside		
	Lederle		
	Lilly		
	Marvell		
	McNeil		
	National Drug		
	Parke Davis and Co.		
	Pitman-Moore		
	Premo		
	Purity		
	Sutcliffe and Case		
	Schering		
	Schieffelin		
	Sharp and Dohme		
	Sherman		
	Shores		
	Squibb		

Thyroid (Continued)

Tablet

Stoddard
Supreme
U.S. Standard
Products Co.
Upjohn
Western Research
Labs.
Wilson
Wyeth

Abbott & Company
206 S. Charles St.
Baltimore, Md.

American Parentrol
Laboratories, Inc.
826 Madison Ave.
Bridgeport, Conn.

American Pharmaceutical
Co., Inc.
525 West 43rd St.
New York, N.Y.

Armour Laboratories
Union Stock Yards
Chicago, Ill.

Associated Physicians Labs
230 Flood Bldg.
San Francisco, Calif.

Ayerst, McKenna & Harrison
Maple St.
Rouses Point, N. Y.

Bellevue Laboratories, Inc.
30 West 15th St.
New York, N.Y.

Blue Line Chemical Co.
302 South Broadway
St. Louis, Mo.

Breon and Co.
Kansas City, Mo.

Buffington's Inc.
8 Sudbury St.
Worcester, Mass.

Bunting Drug Co.
P.O. Box 1165
Wilmington, N.C.

Burroughs Wellcome & Co.
9-11 East 41st St.
New York, N. Y.

Carnrick Co.
20 Mt. Pleasant Ave.
Newark, N. J.

Cavendish Pharmaceutical Corp.
25 W. Broadway
New York, N.Y.

Chappel Laboratories
People Ave.
Rockford, Ill.

Cheplin Biological Labs., Inc.
Taylor & King St.s
Syracuse, N.Y.

Chicago Pharmacal Co.
5547 E. Ravenwood Ave.
Chicago, Ill.

Christina, Vincent & Co., Inc.
121 E. 24th St.
New York, N. Y.

Ciba Pharm. Products, Inc.
Lafayette Park,
Summit, N. J.

Drug Products Co.
26-32 Skillman Ave.
Long Island City, N.Y.

Endo Products, Inc.
84-40 101st
Richmond, L.I. N.Y.

Endocrine Food Co.
4409 Park Ave.
Union City, N.J.

Fitch, Inc.
153 Waverly Pl.
New York, N.Y.

Haist & Co.
1732 Grand Ave.
Kansas City, Mo.

- Harrower Laboratory
920 E. Broadway
Glendale, Calif.
- Harvey Co.
Wells St.
Saratoga Springs, N.Y.
- Dynson, Westcott & Dunning
1030 N. Charles St.
Baltimore, Md.
- Jamieson & Co.
1962 Trombly Ave.
Detroit, Mich.
- Kalash Co.
909 W. 7th Pl.
Los Angeles, Calif.
- Kirk Company
521 West 23rd St.
New York, N.Y.
- Lakeside Laboratories, Inc.
4574 N. Port Washington Rd.
Milwaukee, Wis.
- Lederle Laboratories, Inc.
30 Rockefeller Plaza
New York, N.Y.
- Lilly & Co.
P.O. Box 618
Indianapolis, Ind.
- Loeser Laboratory, Inc.
37 W. 26th St.
New York, N. Y.
- Marvell Pharm. Co., Inc.
55 W. 16th St.
New York, N.Y.
- Massengill Co.
513-527 Fifth St.
Bristol, Tenn.
- McNeil Labs., Inc.
2900 N. 17th St.
Philadelphia, Pa.
- Merck & Co. Inc.
Rahway, N. J.
- Merrell Company
Lockland Station
Cincinnati, Ohio
- Metropolitan Laboratories, Inc.
350 West 31st St.
New York, N.Y.
- Miller Laboratories, Inc.
743 Maple Ave.
Los Angeles, Calif.
- National Drug Co., The
4679 Stenton Ave.
Philadelphia, Pa.
- New York Quinine & Chemical
Works
99-117 N. 11th St.
Brooklyn, N.Y.
- Nordmark Chemical Wks., Inc.
801 2nd Ave.
New York, N.Y.
- Parke Davis & Co.
Atwater St.
Detroit, Mich.
- Pitman-Moore Co.
Div. of Allied Laboratories, Inc.
1220 Madison Ave.
Indianapolis, Ind.
- Premo Pharmaceutical Labs., Inc.
443 Broadway
New York, N.Y.
- Professional Products Co.
254 Drexel Bldg.
Philadelphia, Pa.

Purity Drug Co., Inc.
178 River Dr.
Passaic, N.J.

Reed & Carnrick
155 Van Wagenen Ave.
Jersey City, N.J.

Roche-Organon, Inc.
Roche Park
Nutley, N.J.

Rorer, Inc.
254 S. Fourth St.
Philadelphia, Pa.

Schering & Glatz, Inc.
113 W. 18th St.
New York, N.Y.

Schieffelin & Co.
16 Cooper Sq.
New York, N.Y.

Seals-Ins Laboratories
3137 East Eleventh St.
Los Angeles, Calif.

Sharp & Dohme
Broad & Wallace Sts.
Philadelphia, Pa.

Shores Company, Inc.
Cedar Rapids, Iowa

Sherman Laboratories
14600 Jefferson Ave., East,
Detroit, Mich.

Smith Pharmacal Co.
350 Scotland Rd.
Orange, N.J.

Solex Laboratory, Inc.
40 E. 21st St.
New York, N.Y.

Squibb & Sons, E. R.
745 Fifth Ave.
New York, N.Y.

Stoddard & Co., Inc.
121 E. 24th St.
New York, N.Y.

Strassenburgh Co.
195 Exchange St.
Rochester, N.Y.

Supreme Pharmaceutical Co.
625 Broadway
New York, N.Y.

Sutcliffe & Case Co.
312 S. Adams St.
Peoria, Ill.

U.S. Standard Products Co.
Woodworth, Wis.

United Laboratories, Ltd.
327 S. Fair Oaks Ave.
Pasadena, Calif.

United Medicine Co.
7131 Lincoln Dr.
Philadelphia, Pa.

Upjohn Co.
301 Henrietta St.
Kalamazoo, Mich.

Valentine's Meat-Juice Co.
1600 Chamberlayne Pkway.
Richmond, Va.

Van Patten Pharmaceutical Co.
54 W. Illinois St.
Chicago, Ill.

Van Pelt & Brown, Inc.
8 N. 14th St.
Richmond, Va.

Verax Products, Inc.
116-118 Fourth Ave.
New York, N.Y.

Warner & Co.
113 W. 18th St.
New York, N.Y.

Western Research Labor-
atories
1042-48 Santa Fe Dr.
Denver, Col.

Wilson Laboratories
4221 South Western Ave.
Chicago, Ill.

Winthrop Chemical Co.
170 Varick St.
New York, N.Y.

Wyeth Chemical Co.
257 Cornelison Ave.
Jersey City, N.J.

APPROVED BY Louis W. Buss
Asst. Prof. in Pharmacy
DATE October 18, 1943