

# Social Integration: Survey of First World Nations

Lucas Feldkamp, Tina Lee and Colin O'Reilly (Advisors)  
University of Wisconsin-Stout

## Introduction

The research looks to measure social integration through two different approaches: anomie and trust. It analyzes anomie, generalized trust, and confidence in social institutions as measures to explore how socially integrated nations are. It then looks at the relationship between anomie and confidence in social institutions. The focus is on six first world nations (i.e. capitalist, industrialized countries): The United States, Japan, Sweden, Australia, Italy, and Canada. The data is from the World Values Survey. This research provides a basis of how trust and anomie influence each other and can be used to understand and explain social integration. The results suggest lines of future research into what impacts a nations' resilience and acceptance of social change through effects on trust and anomie.

## Important Literature

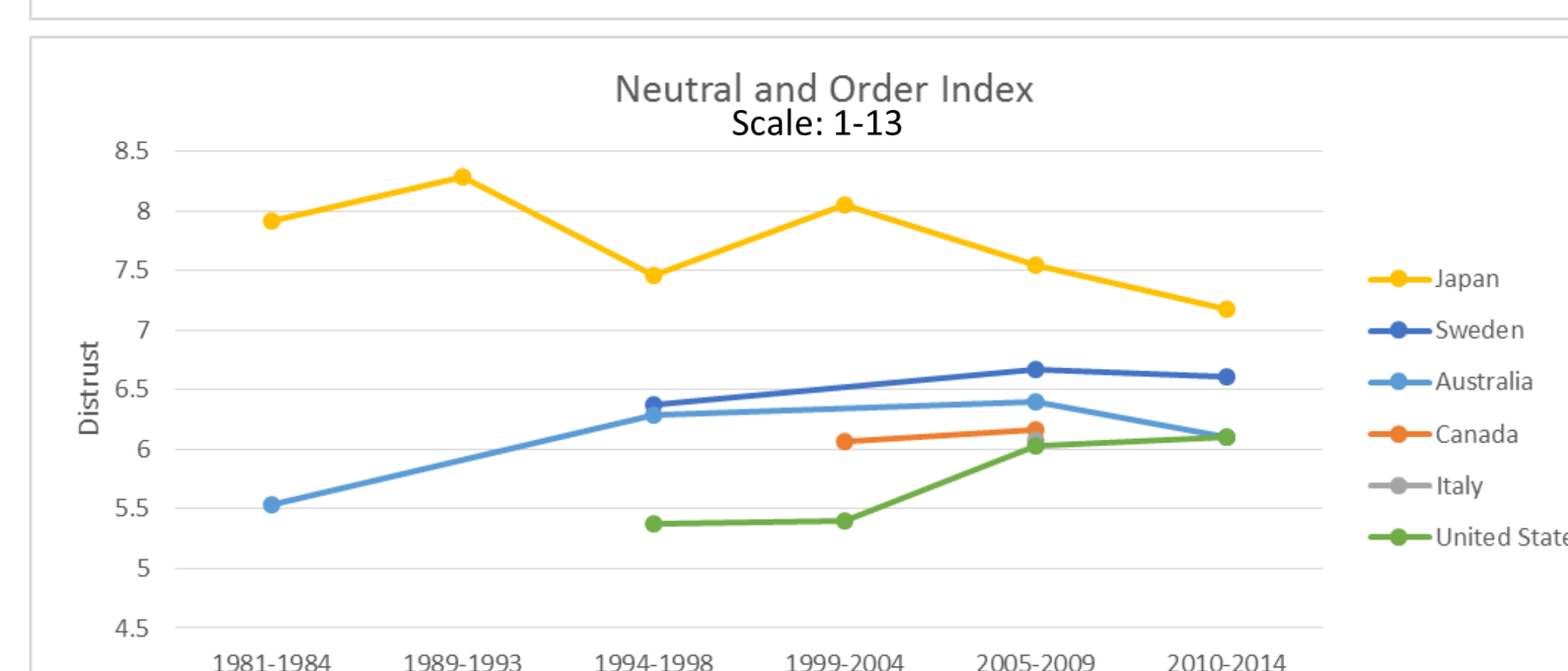
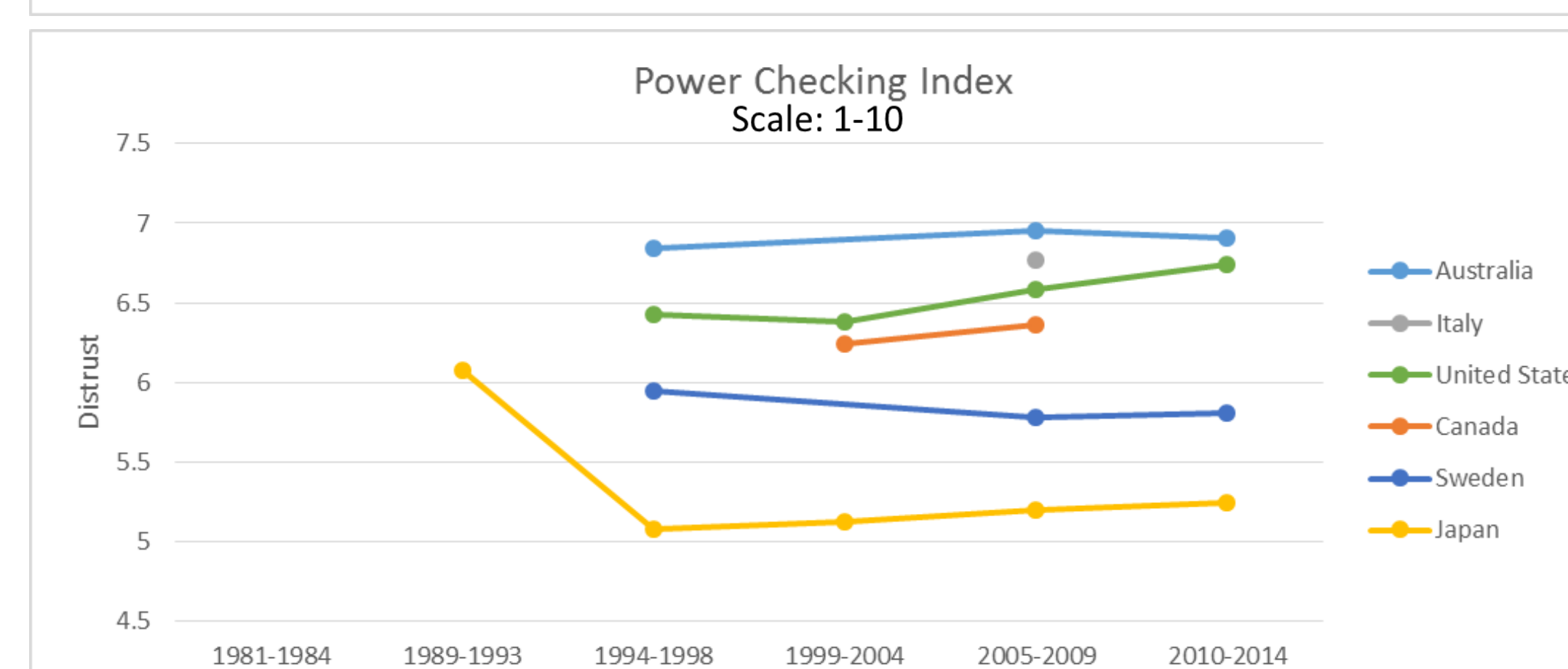
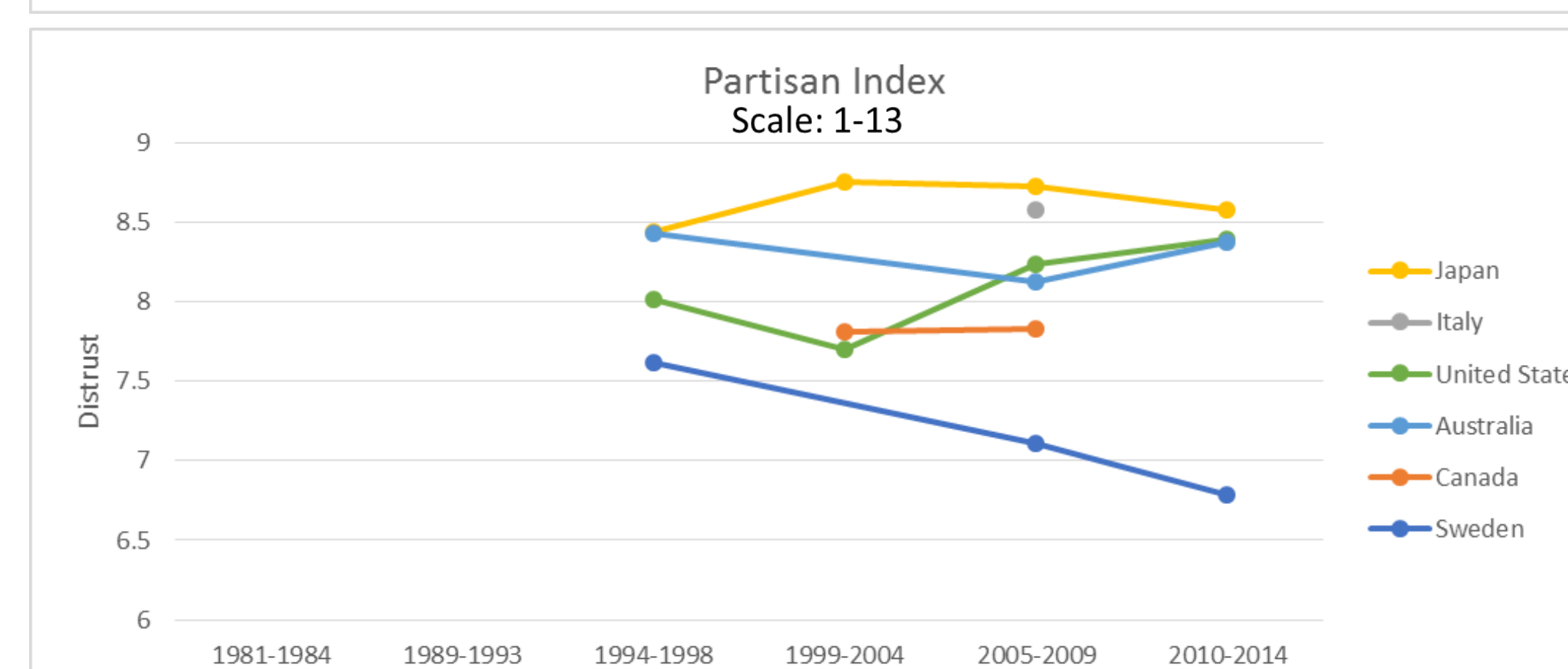
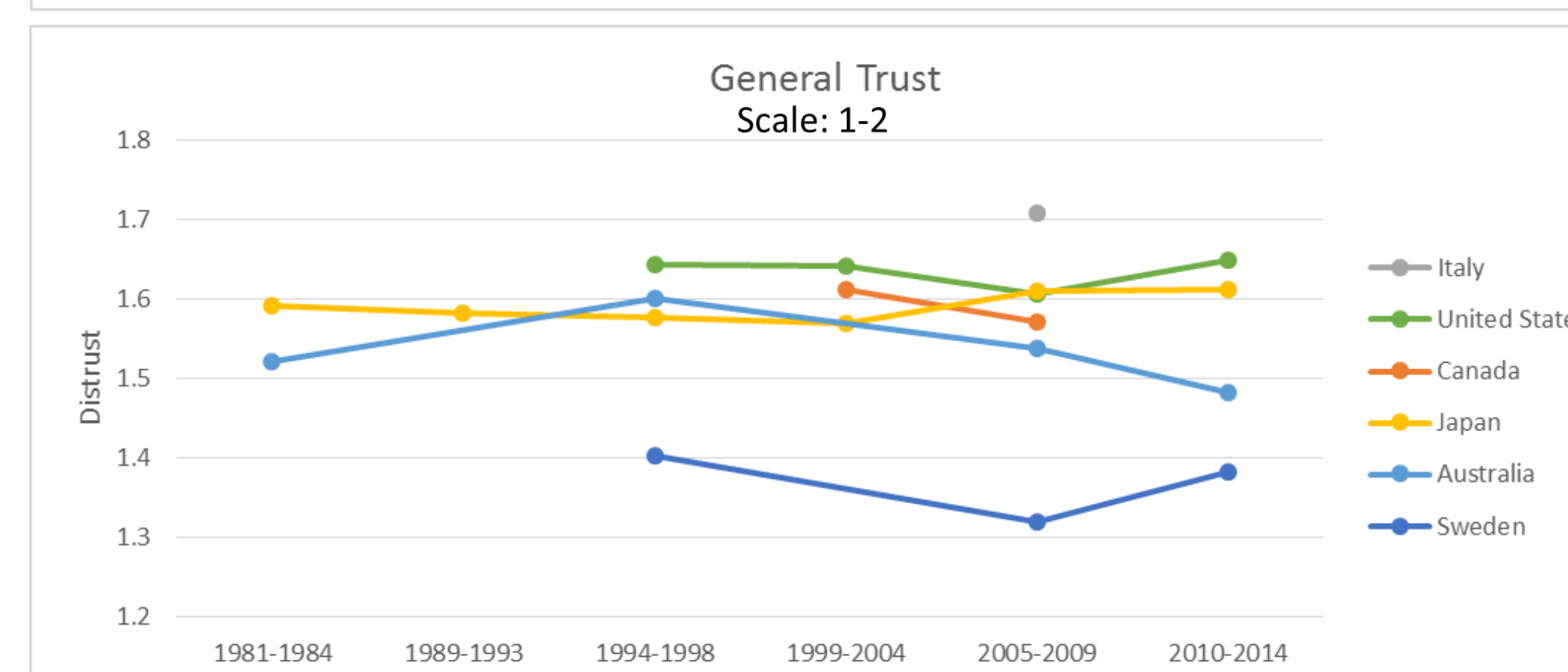
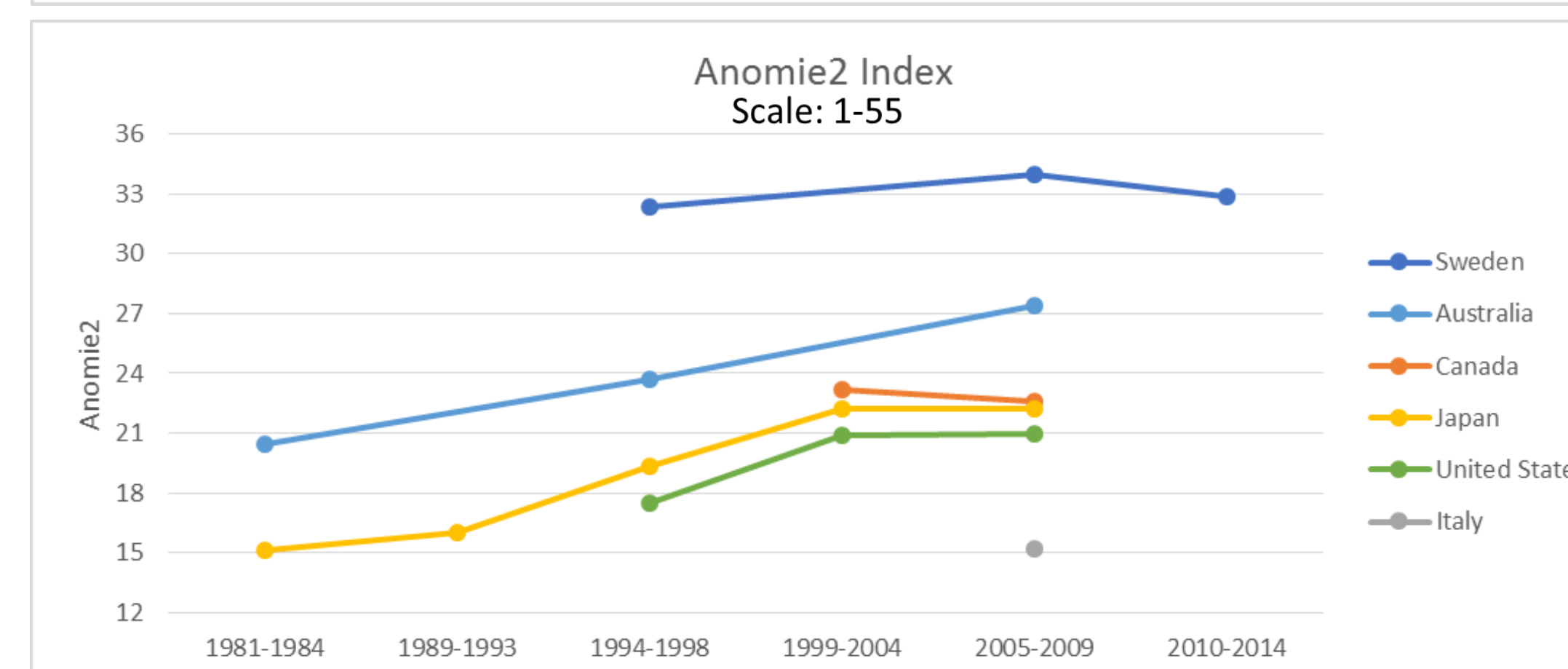
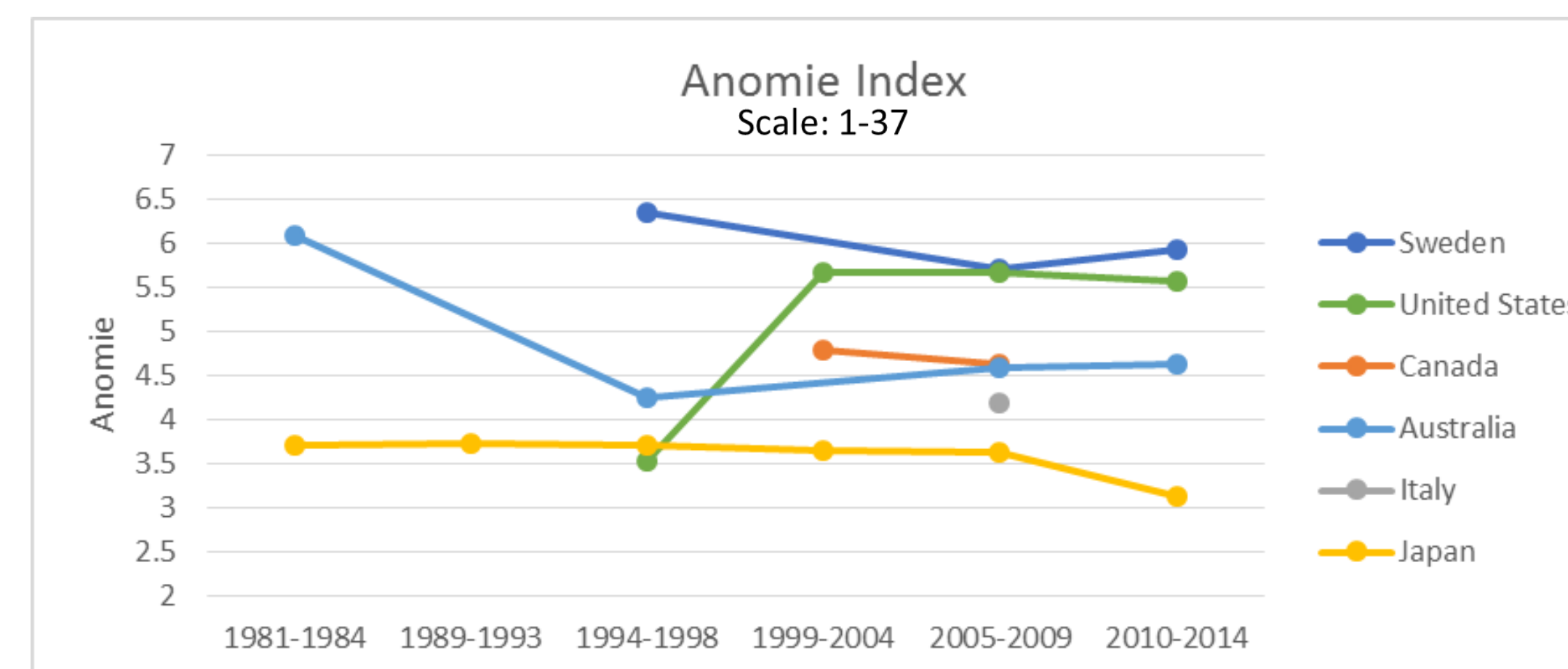
- Ruohi Zhao, & Liqun Cao. (2010). Social Change and Anomie: A Cross-National Study.
- Rothstein, B., & Stolle, D. (2008). The State and Social Capital: An Institutional Theory of Generalized Trust.

## Methods

- World Values Survey Data Longitudinal View of 6 First World Nations
- Isolated variables related to anomie and trust
- Justifiable -Confidence -General Trust
- Constructed Indexes to compare mean levels between nations and waves Significance tests on mean changes of more than .5
- Linear regression to explore relationship between anomie and trust

## Factor Analysis

	1	2		
Anomie2	Justifiable: abortion	0.84	0.05	
	Justifiable: divorce	0.805	-0.019	
	Justifiable: homosexuality	0.765	0.043	
	Justifiable: euthanasia	0.687	0.05	
	Justifiable: prostitution	0.607	0.277	
Anomie	Justifiable: suicide	0.603	0.200	
	Justifiable: avoiding a fare on public transport	0.141	0.764	
	Justifiable: cheating on taxes	0.134	0.76	
	Justifiable: someone accepting a bribe	0.086	0.74	
	0.002	0.733		
Partisan	Confidence: Parliament	0.871	0.119	0.137
	Confidence: The Political Parties	0.813	0.193	0.117
	Confidence: The Government	0.808	0.134	0.191
	Confidence: The Civil Services	0.643	0.148	0.311
Power Checking	Confidence: Television	0.099	0.872	0.075
	Confidence: The Press	0.116	0.861	0.064
	Confidence: Labour Unions	0.308	0.465	-0.022
Neutral Order	Confidence: Armed Forces	0.005	0.108	0.82
	Confidence: The Police	0.288	0.138	0.632
	Confidence: Churches	0.184	-0.179	0.624
	Confidence: Major Companies	0.319	0.29	0.389



## Key Terms

- Social Integration**-the interrelation of people in a society
- Anomie**-state of normlessness, confusing or conflicting norms
- Norm**-informal understandings of how people should behave in a society
- General Trust**-level of care you have to take when interacting with people

## Discussion

- Principle components of justifiable variables seem to relate to theory of inherently bad crime and crime that is bad by social definition
- Principle components of confidence are similar to previous research by Rothstein and Stolle with the addition of labour unions, churches and major companies
- Sweden is a major outlier on general trust, anomie2 and more trusting of partisan and power checking social institutions
- Significant changes of anomie
  - United States Wave 3-4: 2.1449 increase
  - Japan Wave 5-6: .5067 decrease
  - Australia Wave 1-3: 1.8465 decrease
- Significant changes in distrust of Power Checking institutions
  - Japan Wave 2-3: 1.0004 decrease

## Future Research

- In depth analysis of one nation
- Comprehensive study of all nations
- Focus into significant changes in scales
- Analysis of global and national events and their effects

## Linear Regression

Model	Anomie		Anomie2	
	1	2	1	2
Partisan	0.043*	0.028	-0.206*	-0.127*
Power Checking	-0.383***	-0.390***	-0.619***	-0.622***
Neutral Order	0.412***	0.407***	1.627***	1.648***
Japan	-2.784***	-2.743***	-2.485***	-2.710***
Sweden	0.269*	0.392***	11.092*	10.391***
Canada	-0.549**	-0.506***	2.393***	2.269***
Australia	-0.752***	-0.669***	4.717***	4.517***
Italy	-1.054***	-1.029***	-5.092***	-4.942***
Generalized Trust		0.535***		-3.023***
Constant	4.925***	4.230***	16.508***	20.674***
R <sup>2</sup>	0.042	0.044	0.188	0.201
N	20190	19769	14410	14113

Excluded Variable: United States  
\*p<.05; \*\*p<.01; \*\*\*p<.001, two tailed tests  
Source: World Values Survey 1981-2014 Longitudinal Aggregate