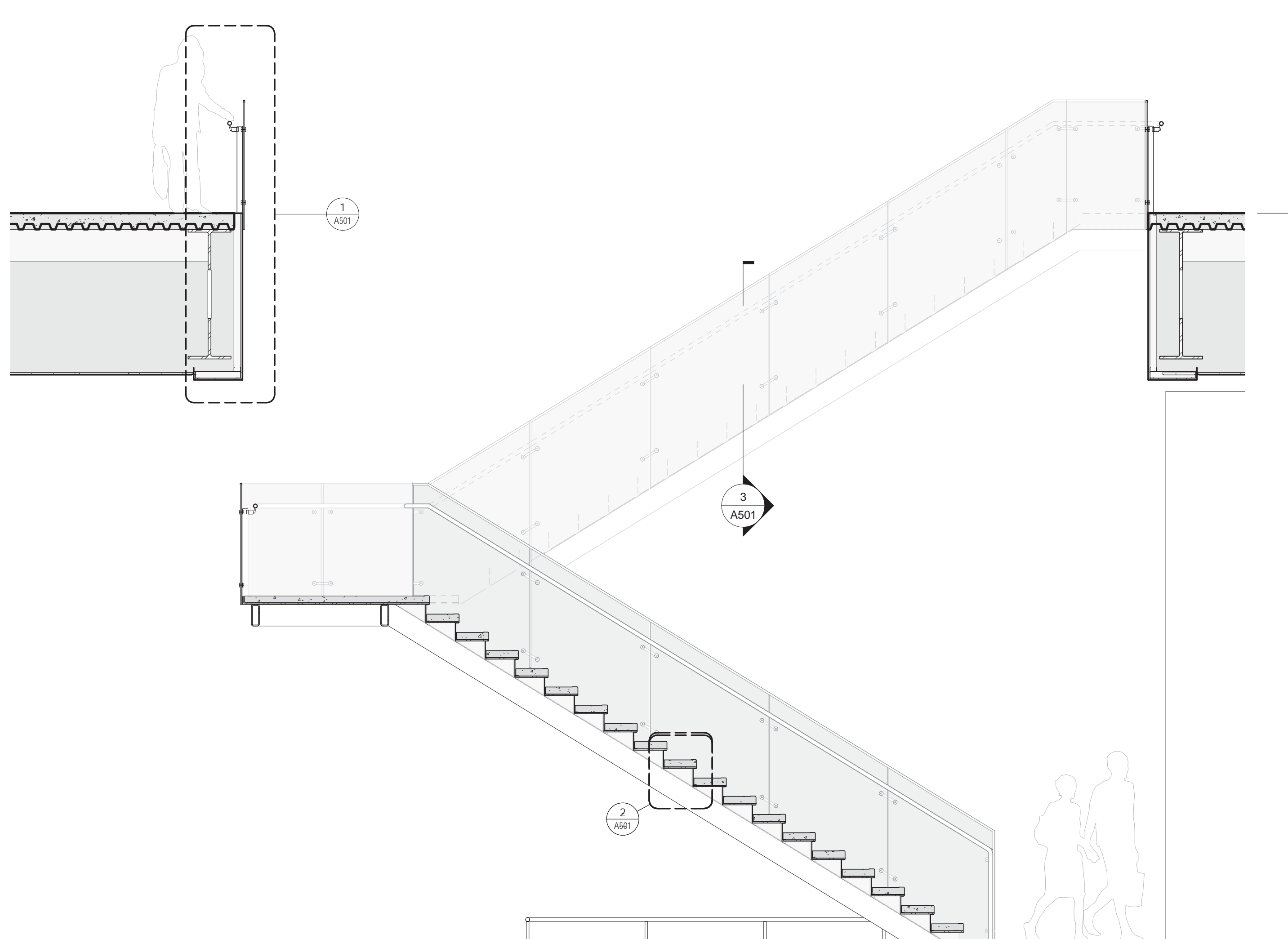
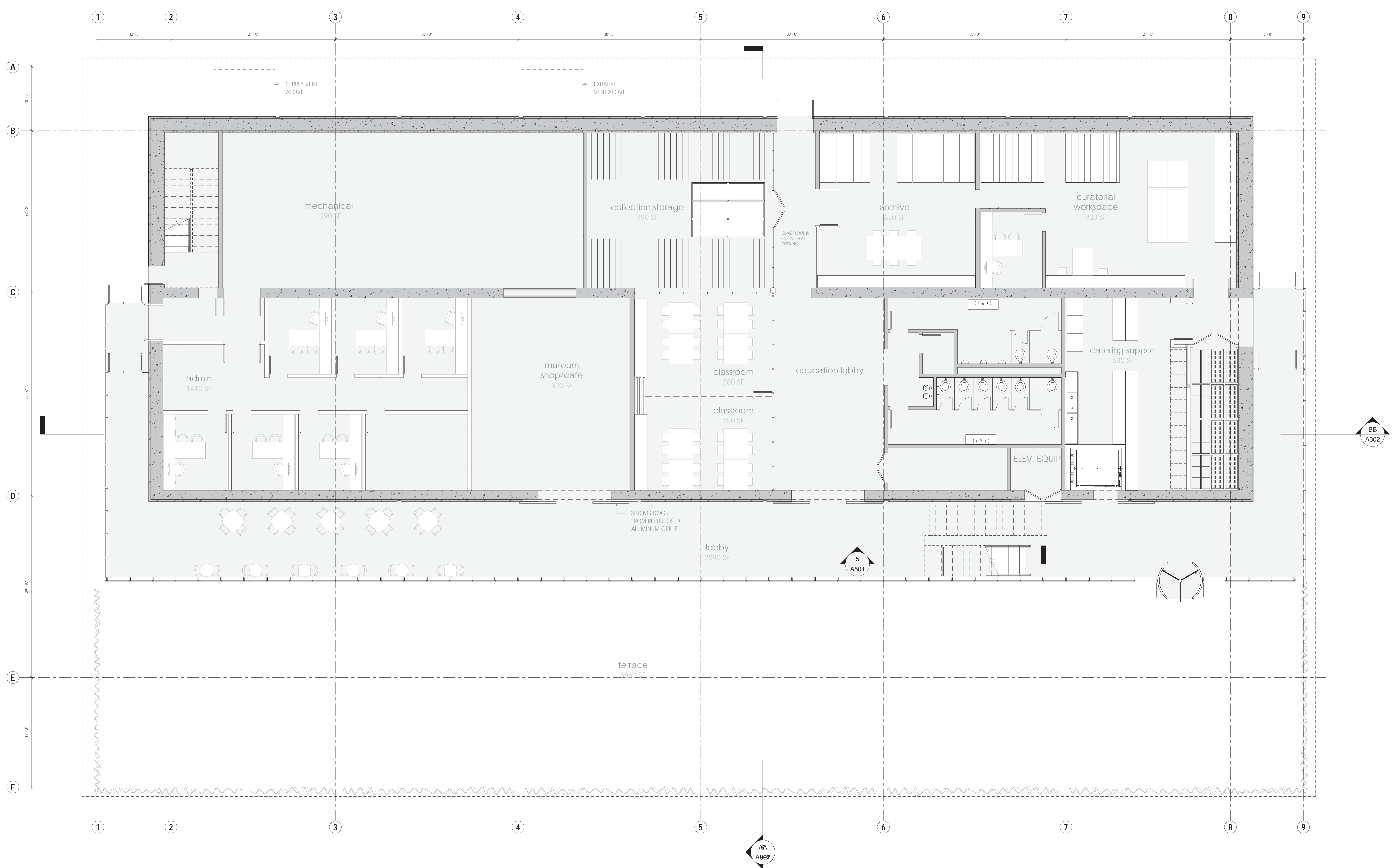


A | Original Pumping Station
1874

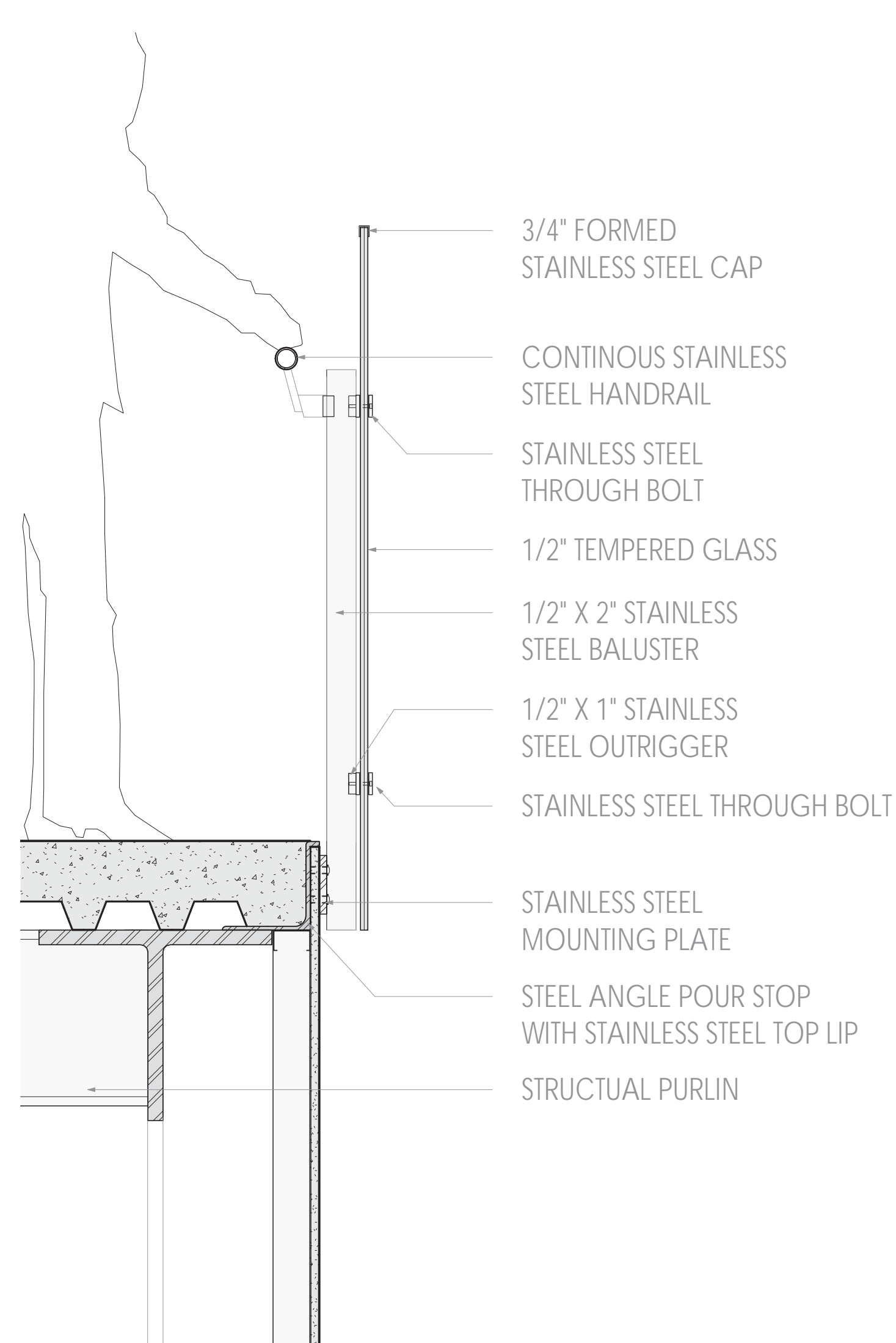
B | LITHOGRAPH POSTCARD
1906

C | NEW PUMPING STATION UNDER CONSTRUCTION
1963

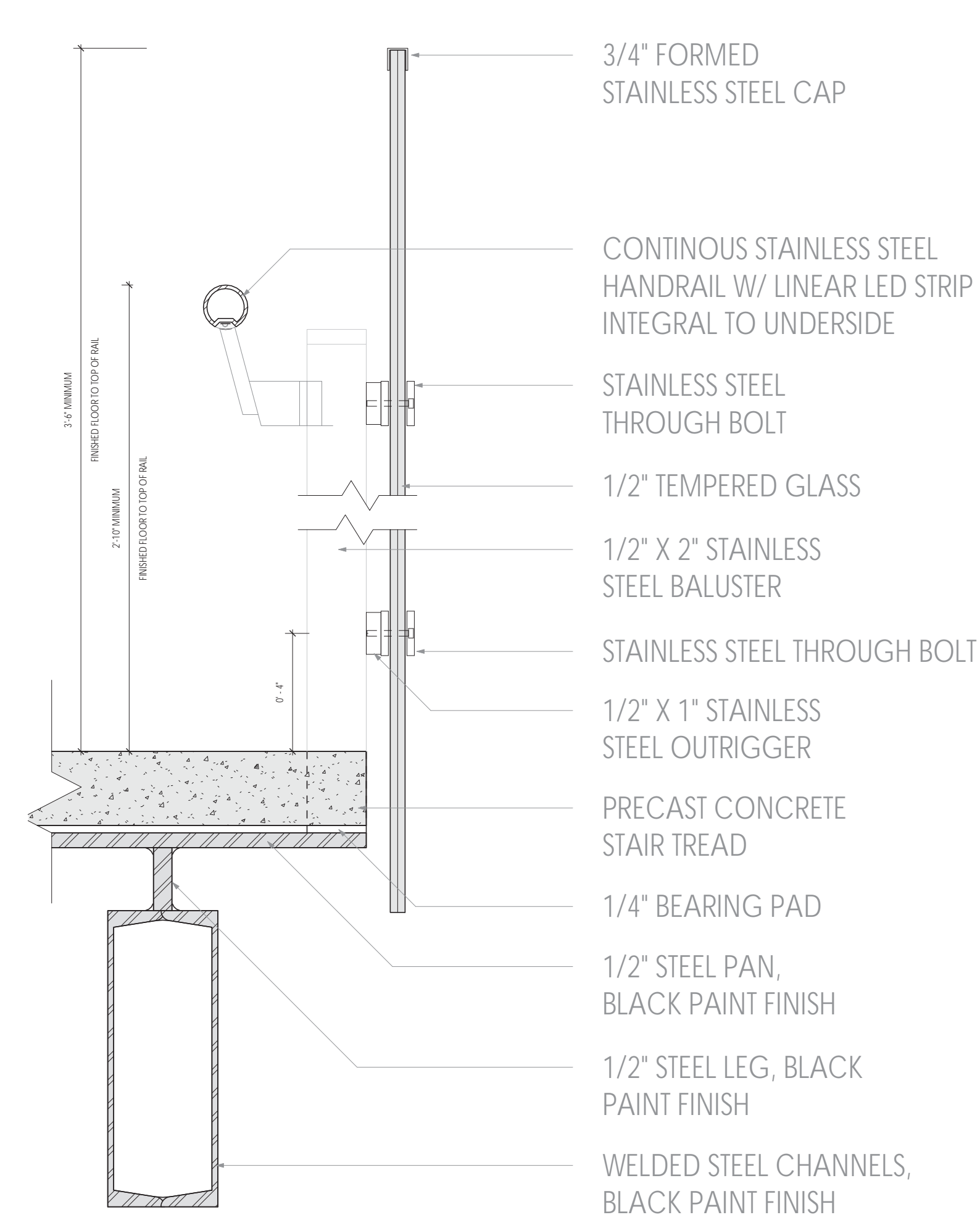
D | COMPLETED NEW PUMPING STATION
1963



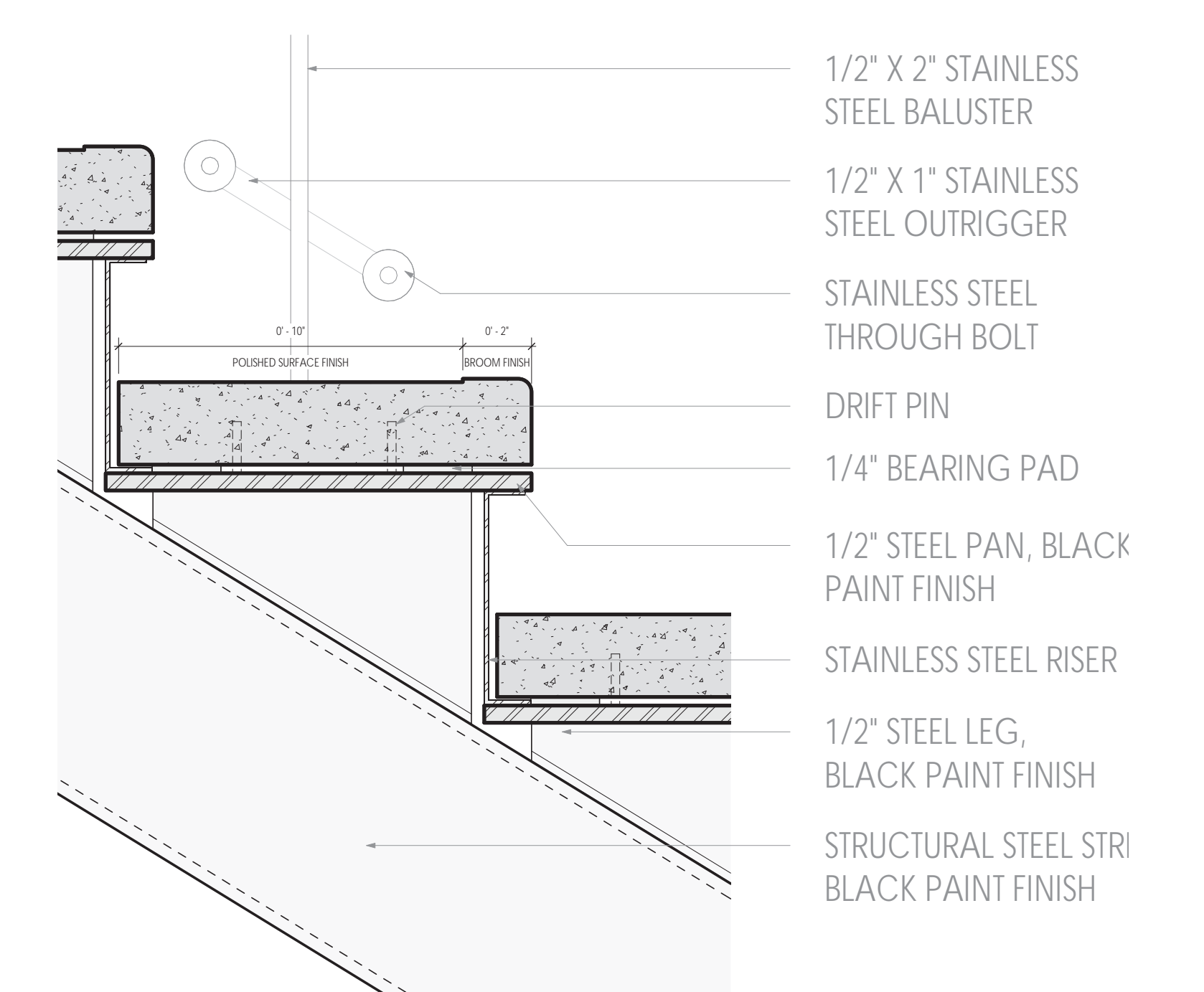
01 | ENLARGED STAIR
1 1/2" = 1'-0"



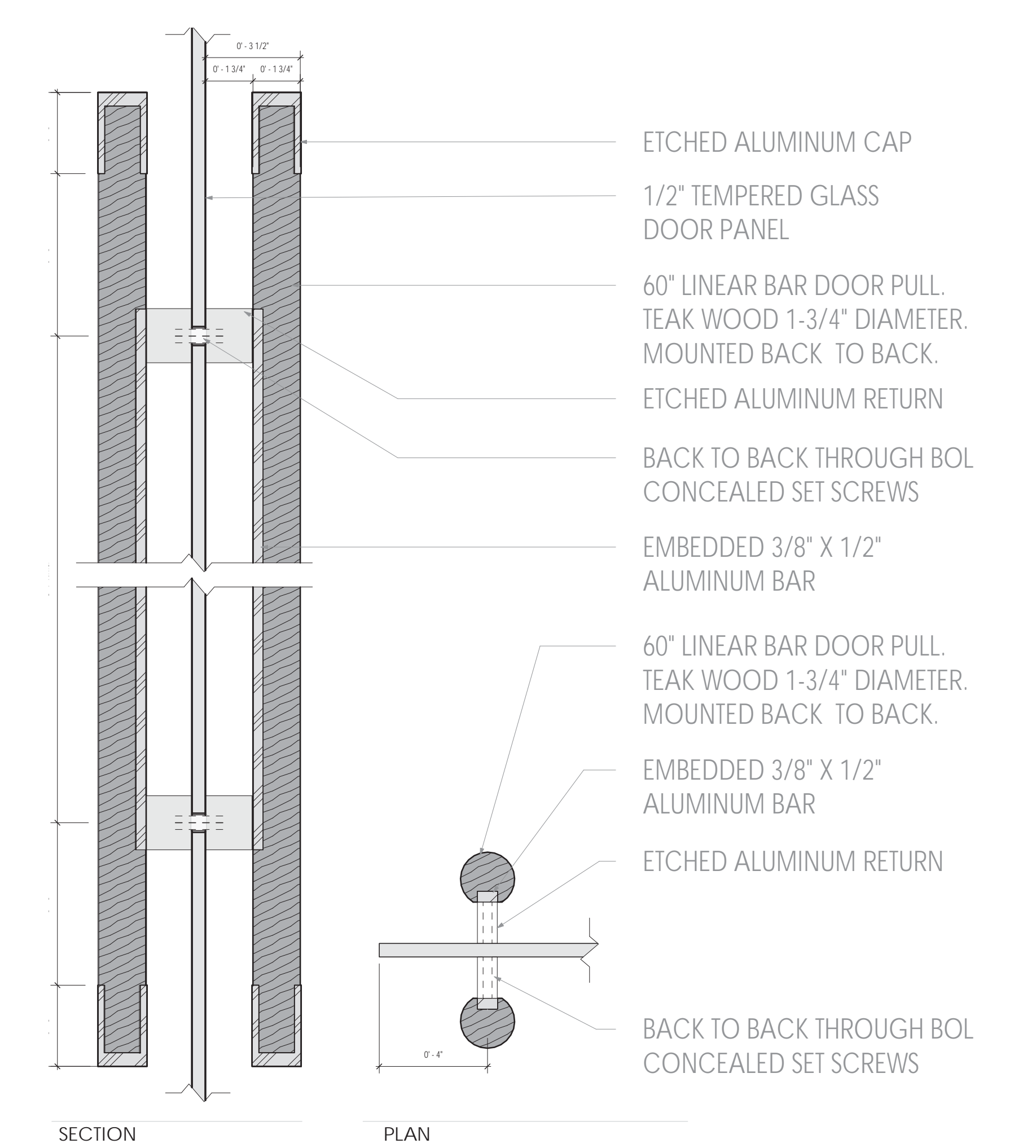
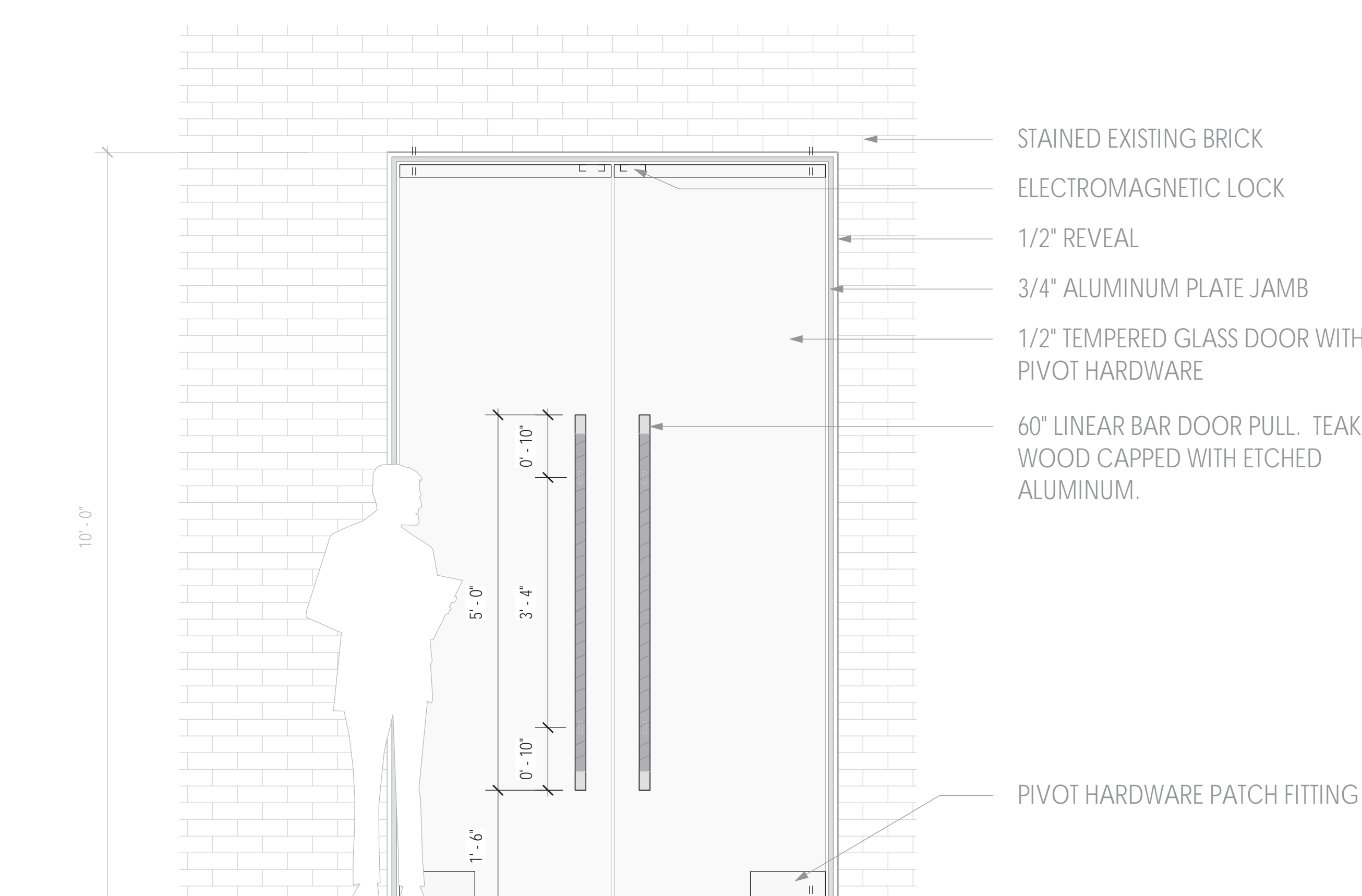
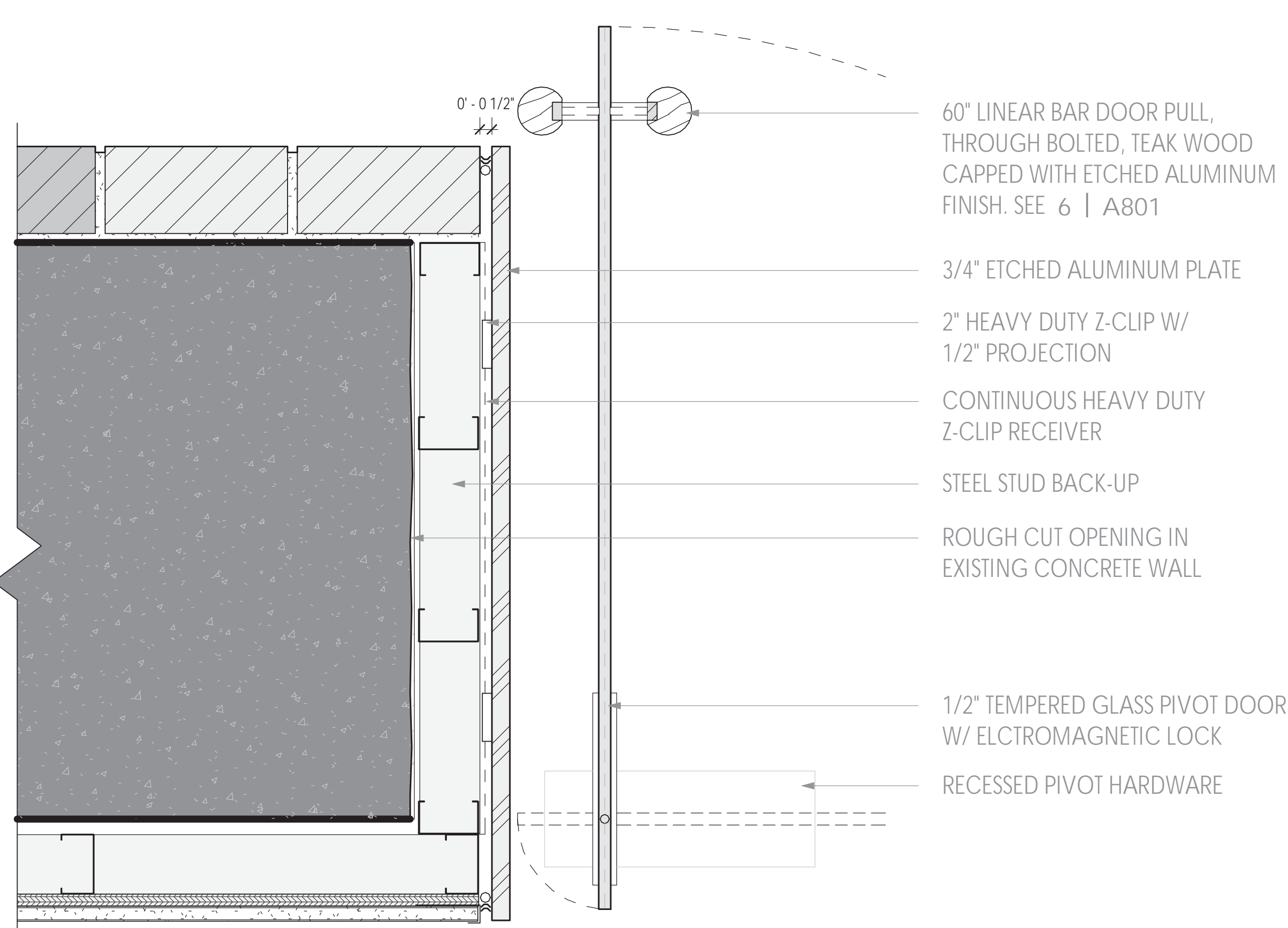
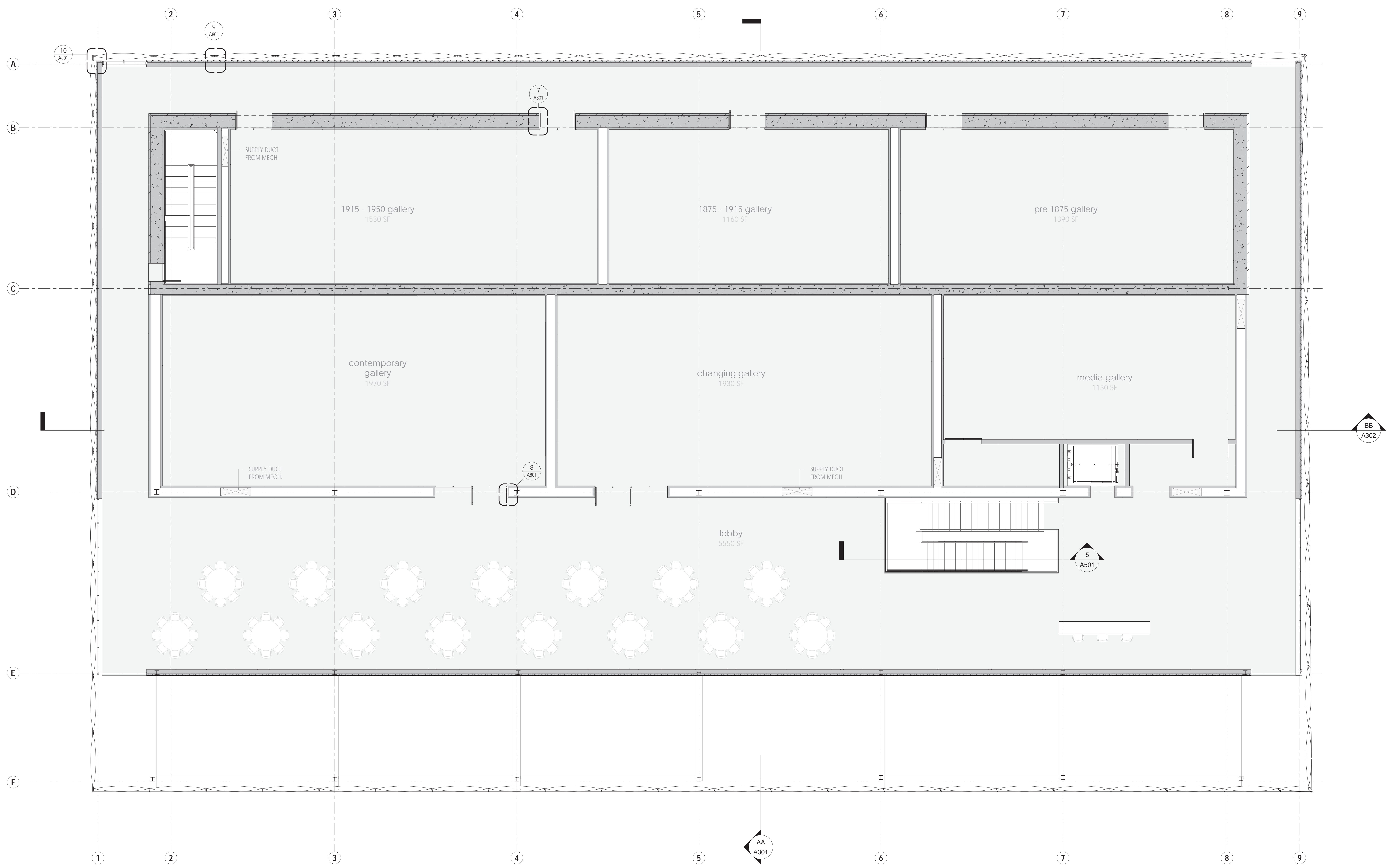
02 | FLOOR OPENING DETAIL
1 1/2" = 1'-0"



03 | STAIR RAILING DETAIL
3" = 1'-0"



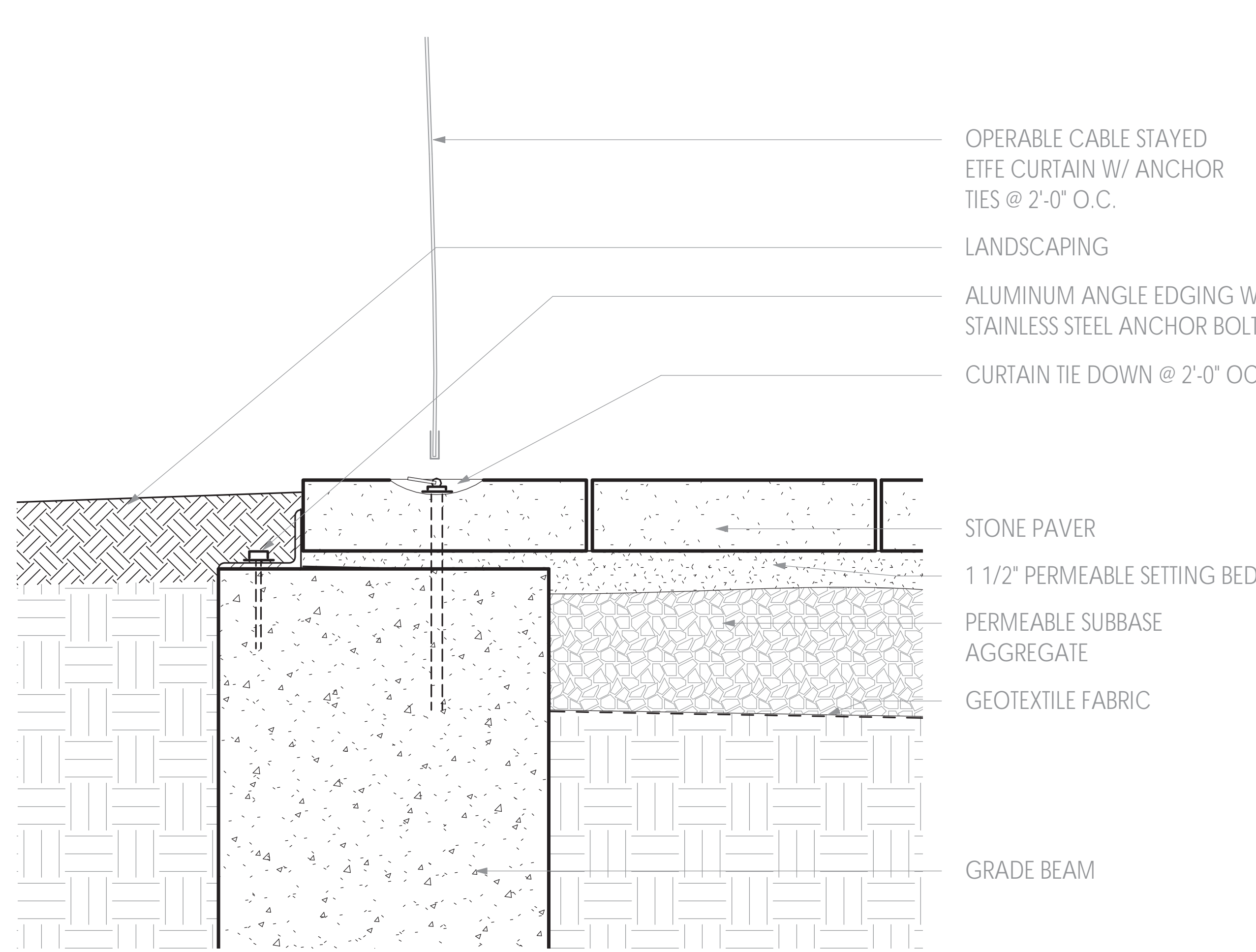
04 | STAIR TREAD DETAIL
3" = 1'-0"



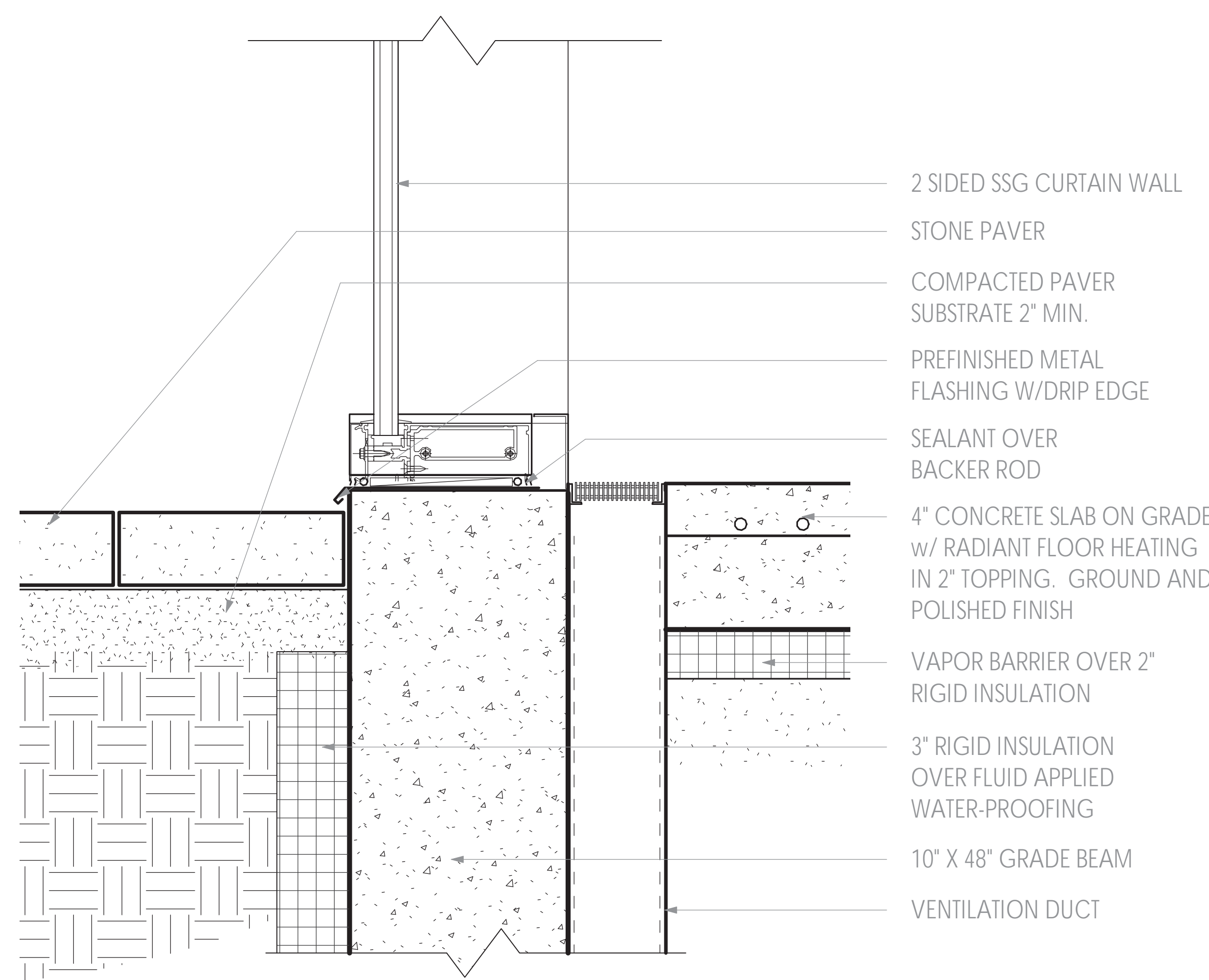
05 | GALLERY DOOR JAMB DETAIL
3" = 1'-0"

06 | GALLERY DOOR ELEVATION
3/4" = 1'-0"

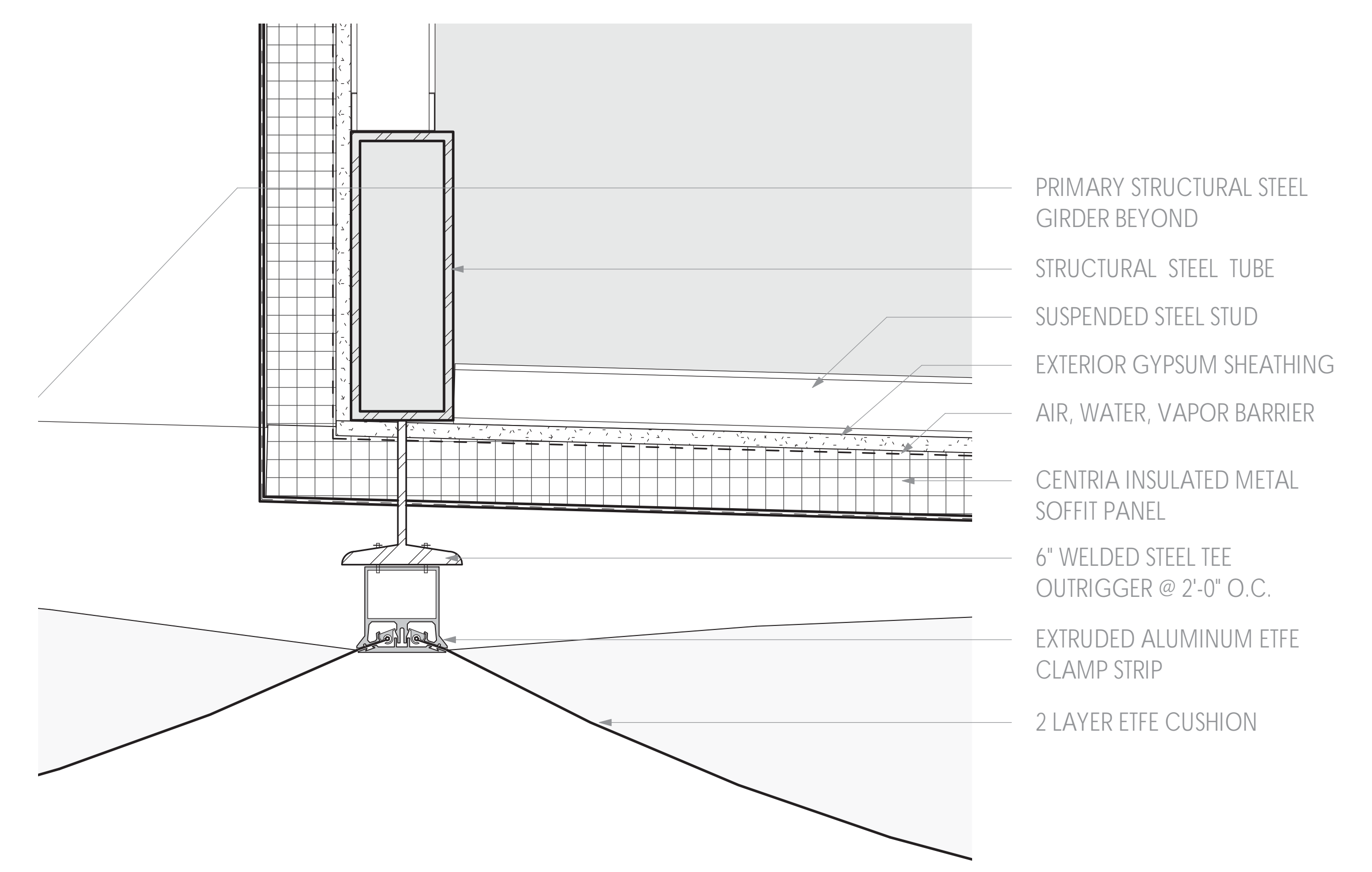
07 | GALLERY DOOR HARDWARE DETAIL
3" = 1'-0"



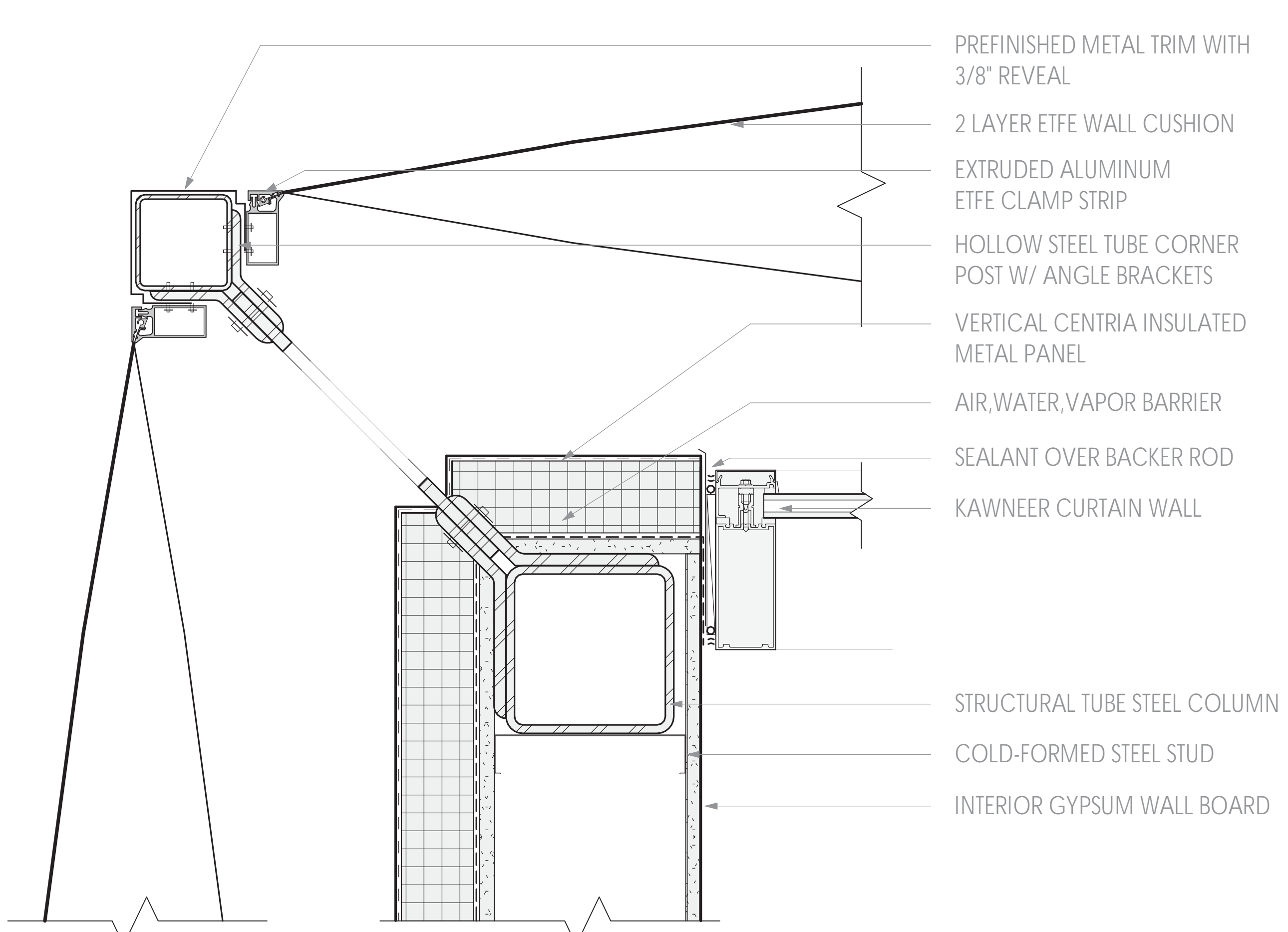
08 | CURTAIN ANCHOR DETAIL
3' - 1'-0"



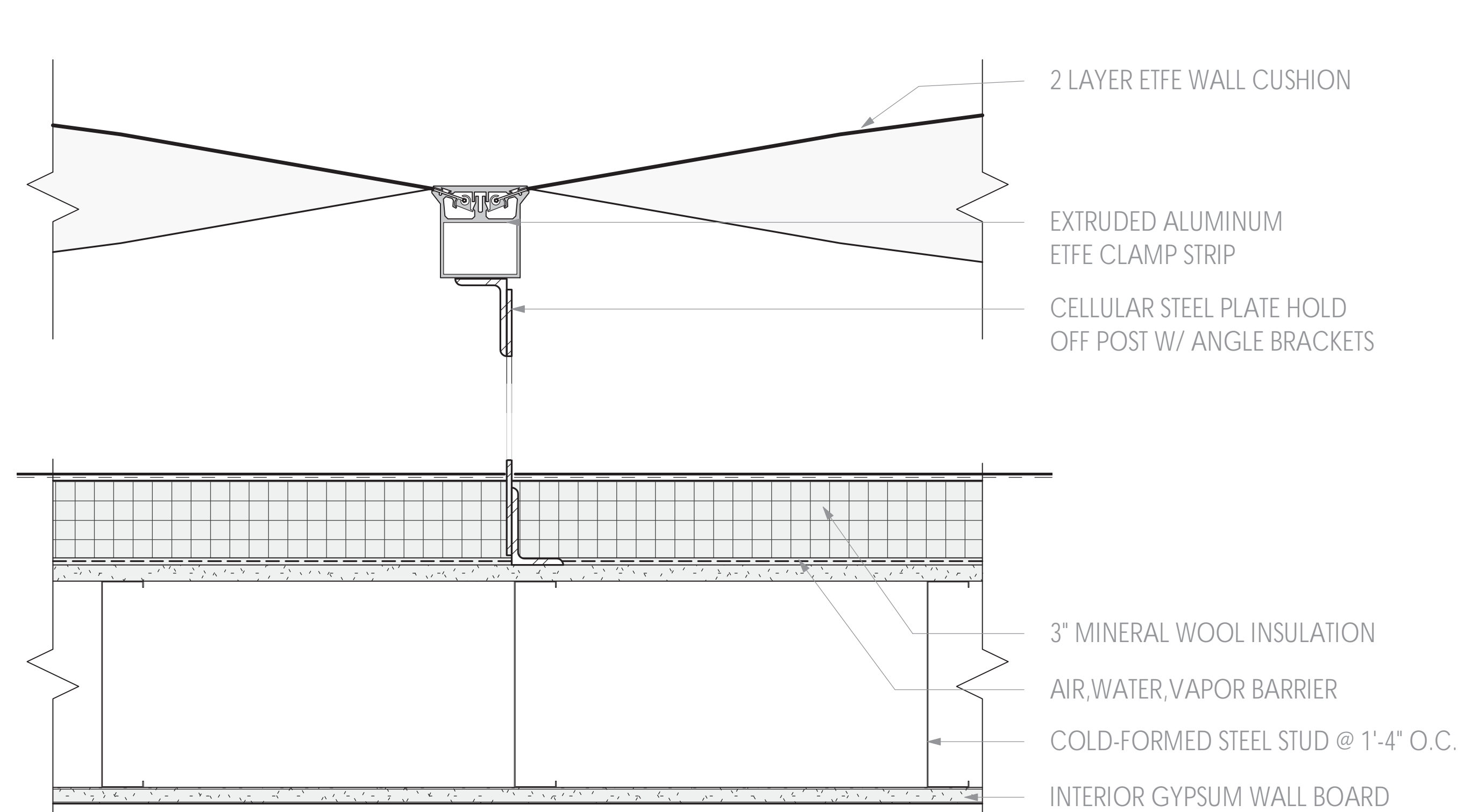
09 | CURTAIN WALL BASE DETAIL
3' - 1'-0"



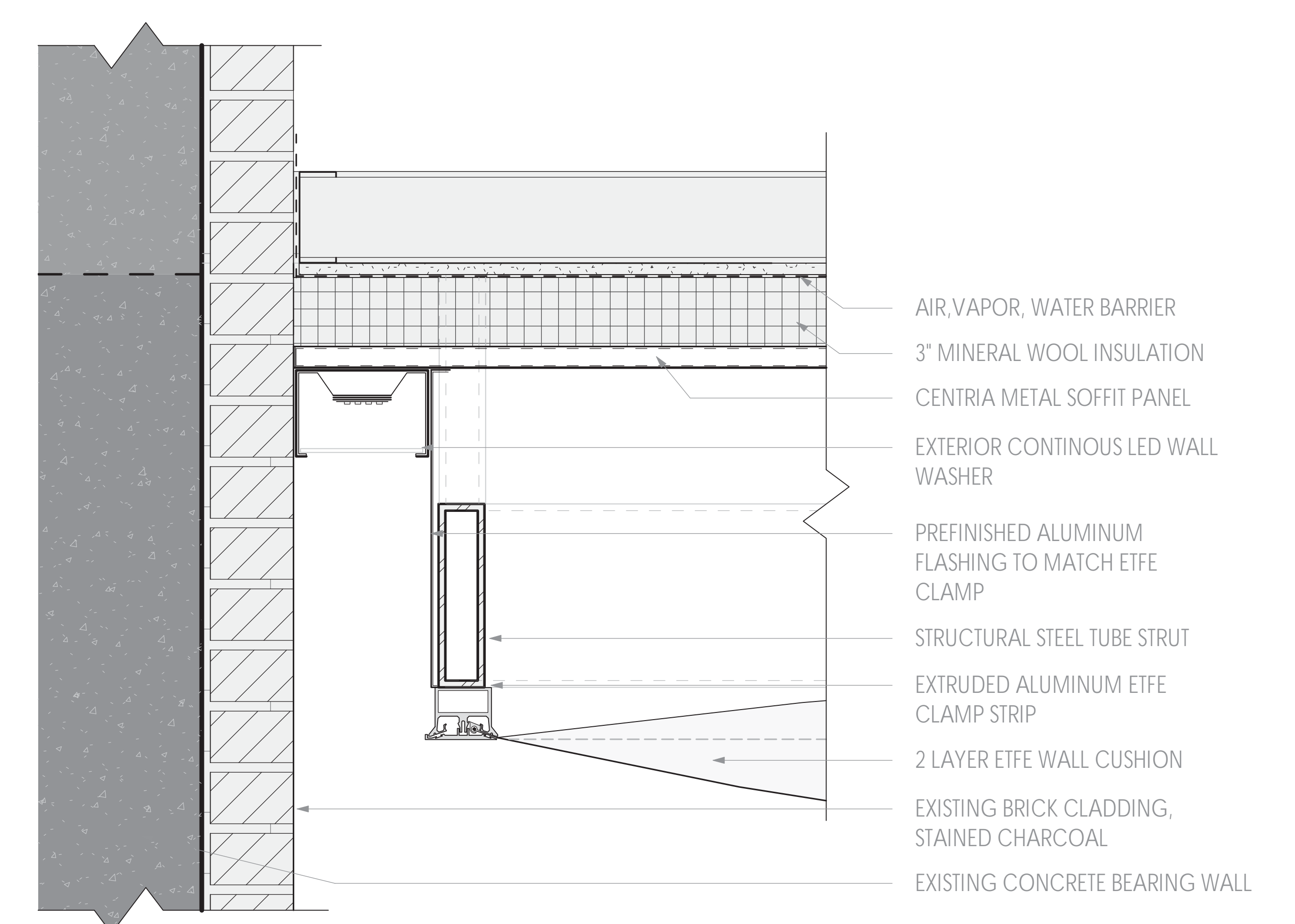
10 | ETEFE CANTILEVER SOFFIT DETAIL
3' - 1'-0"



11 | EFFE CORNER DETAIL
3" = 1'-0"



12 | EFFE VERTICAL JOINT DETAIL
3" = 1'-0"



13 | EFFE SOFFIT MEETS EXISTING WALL
3" = 1'-0"

