

# Results from UW-Madison's 2006 Undergraduate Survey



Margaret Harrigan

Office of Academic Planning and Analysis

[http://apa.wisc.edu/performance\\_students\\_surveys.html](http://apa.wisc.edu/performance_students_surveys.html)

March 28, 2007

# A Brief History of the Survey

---

- ❑ Ran annually  
1993 - 1998
- ❑ Currently run every 3  
years ('00, '03, '06)
- ❑ Purpose:
  - Accountability
  - Bragging rights
  - Data on what is working  
well, what needs to  
improve



# Details

---

- ❑ Random sample with over-sampling of minority students
- ❑ Telephone survey of about 1200 - 1300 undergraduates in spring semester
- ❑ Vice Provost for Teaching and Learning leads effort
- ❑ Administered by UW Survey Center
- ❑ Weighted to reflect student body

# Some Caveats in Survey Research

---



- ❑ Sample
- ❑ Measuring experiences and attitudes – answers may differ because of different experiences, perceptions, or expectations
- ❑ Changes in technology

# Types of Questions

---

- Basic satisfaction items
  - Student services and facilities
  - Overall satisfaction with UW
- Climate issues
- Integration into campus community
- Out-of-classroom experiences
- Difficulty getting into classes
- Special Topics: financing college, study abroad, academic advising, etc.

# What we do with all this data

---

- ❑ Look at overall findings
- ❑ Compare groups of students (minorities, transfers, residents)
- ❑ Analyze changes over time



# Getting the most from the college experience

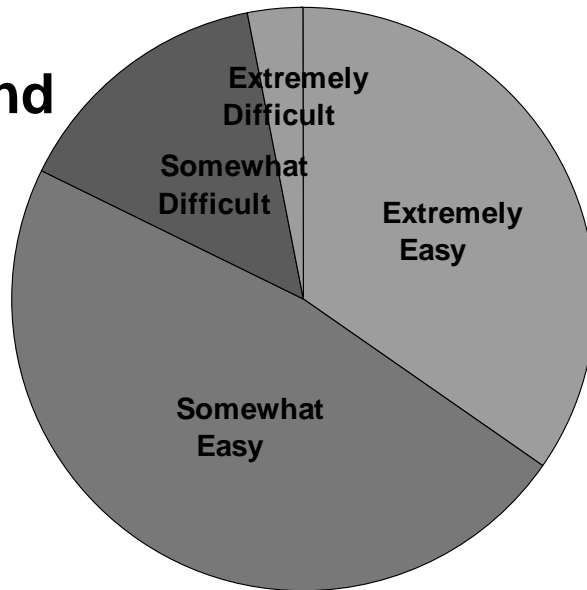
---

- Personal connections
  - With other students
  - With faculty
- Working and learning with people who are different from you
- Out-of-classroom experiences

# Integration into Campus Community

---

## Background

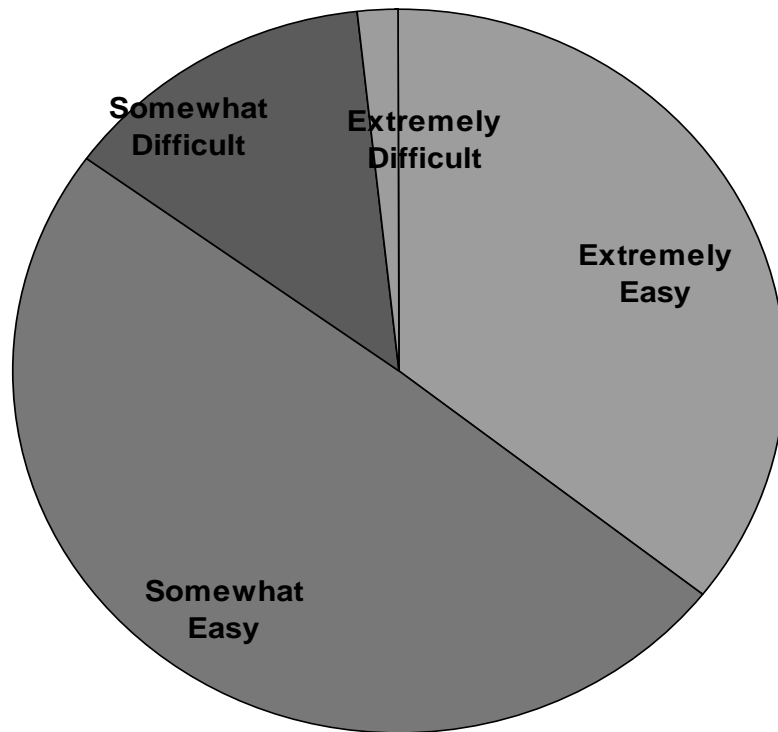


- How easy is it for you to find people on campus who share your background & experiences?



# Integration into Campus Community

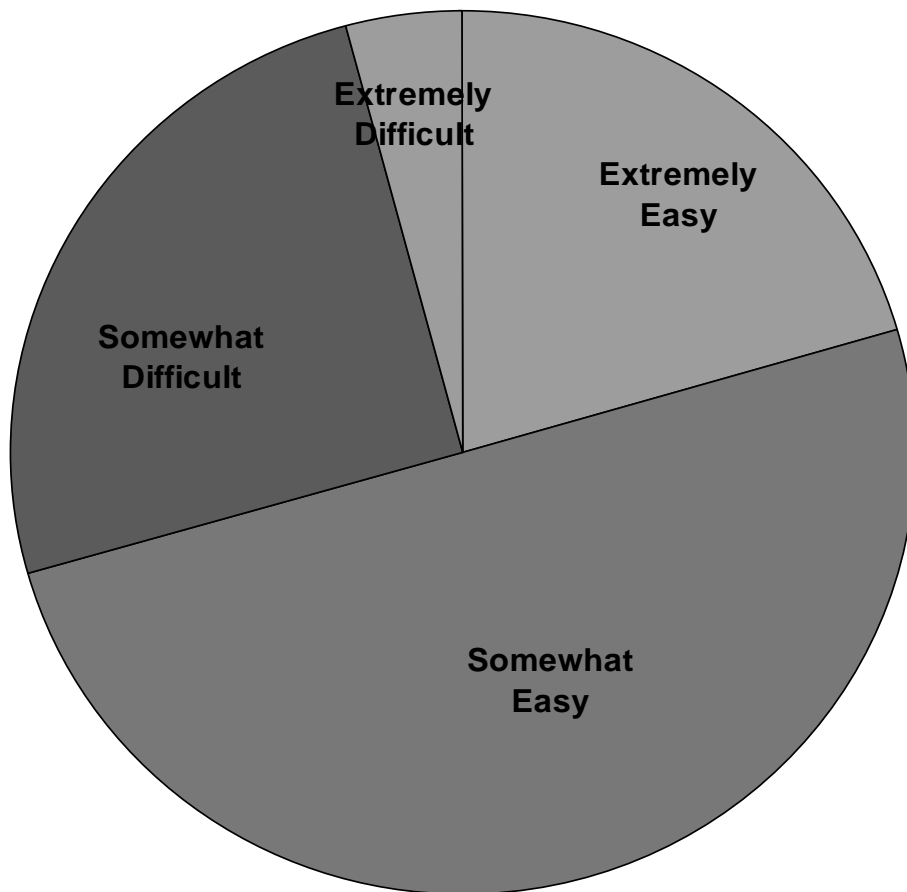
---



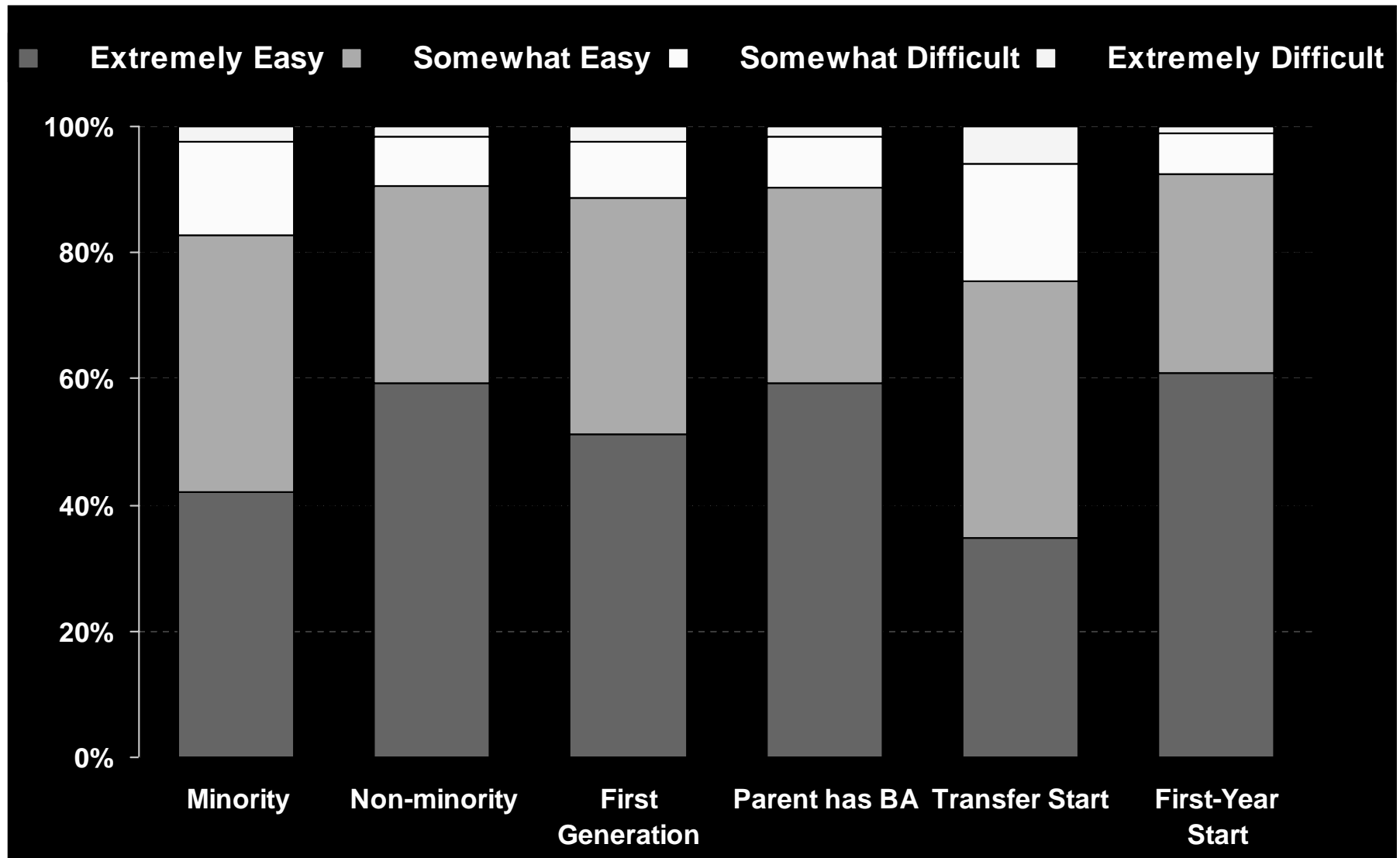
- How easy is it for you to find students to study with for exams or class projects?

# How easy is it for you to find a professor you really feel comfortable talking to?

---

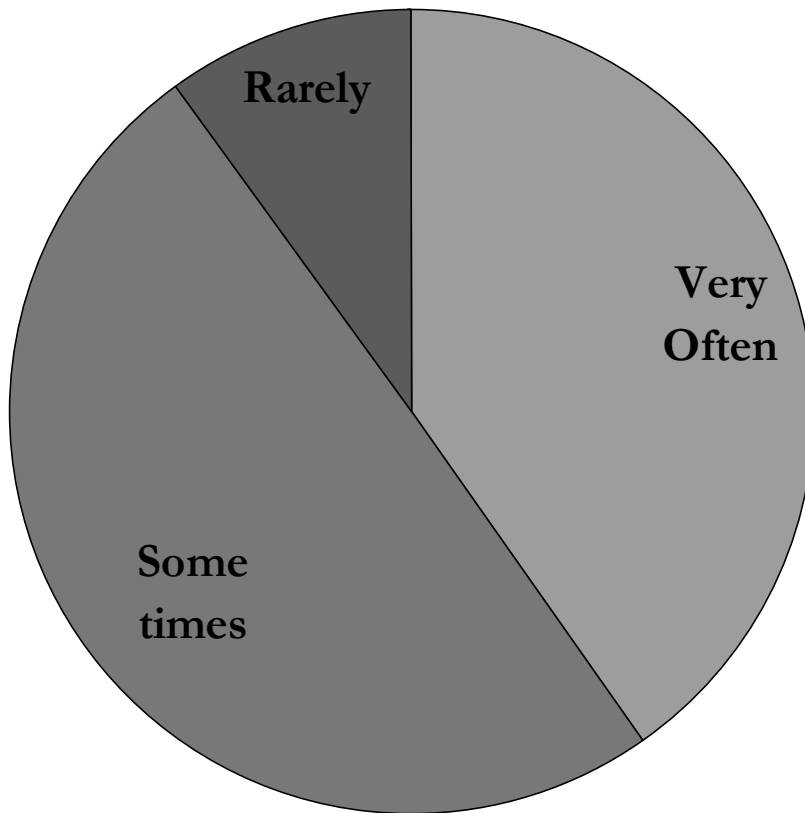


# How easy is it for you to find someone to socialize with?



# How often do you interact with people who are different from you?

---



# Out of Classroom Learning Activities

---



- ❑ 76% attended varsity sports event
- ❑ 79% attended cultural event on campus
- ❑ 41% volunteered
- ❑ 19% took service learning course (31% of seniors)
- ❑ 28% held internship (46% of seniors)
- ❑ 18% of seniors had studied abroad

# Out of Classroom Learning Activities

---



- ❑ 15% involved in student government
- ❑ 44% in clubs related to major
- ❑ 35% in other student organizations
- ❑ 36% played varsity or intramural sports
- ❑ 33% work on campus

# Research Opportunities

---



- ❑ 25% for academic credit (39% of seniors)
- ❑ 13% with faculty member outside of class (21% of seniors)
- ❑ 45% rate opportunity for research excellent or very good

# How do our students rate UW?

---



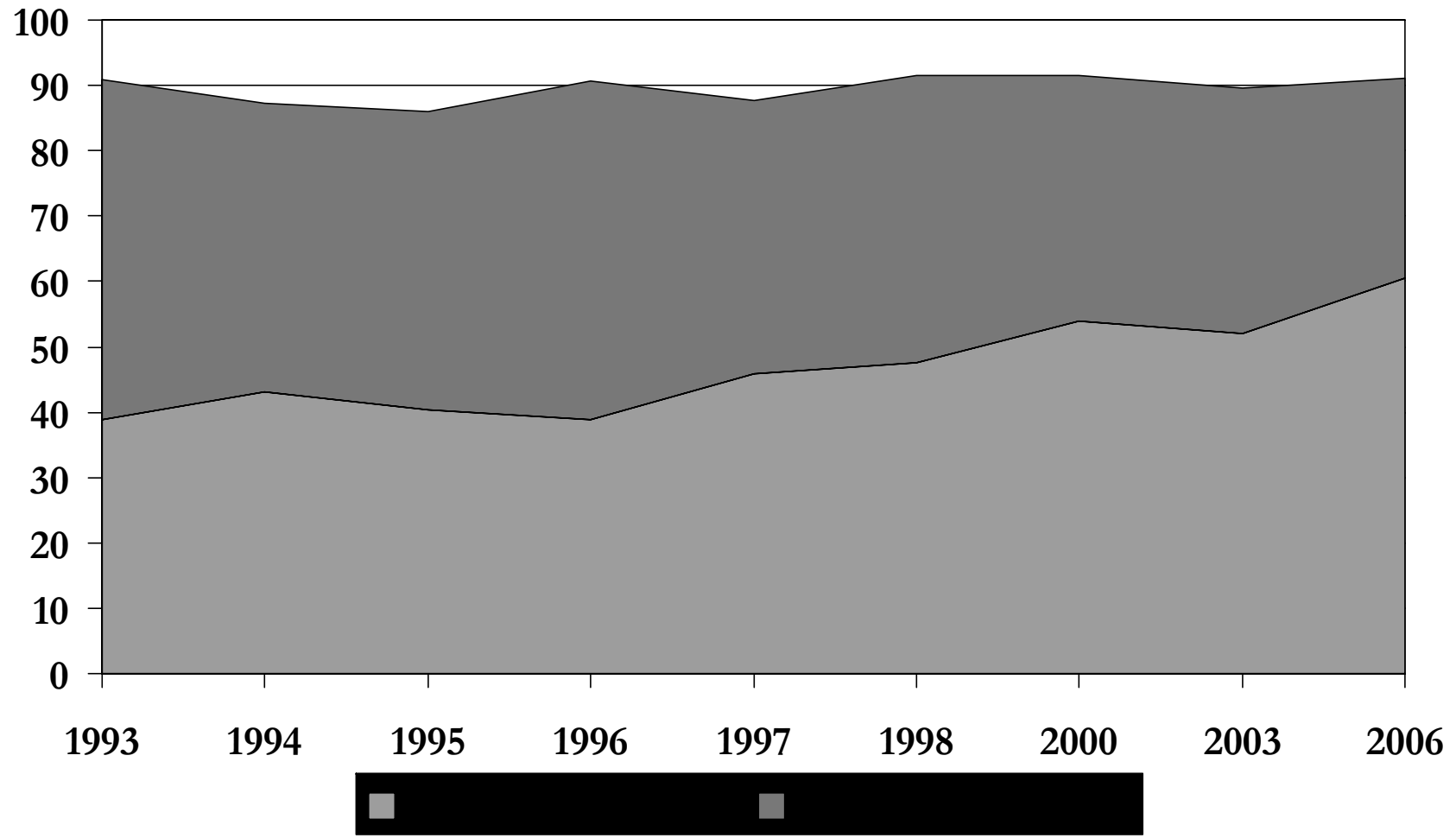
# Overall Satisfaction Measures

---

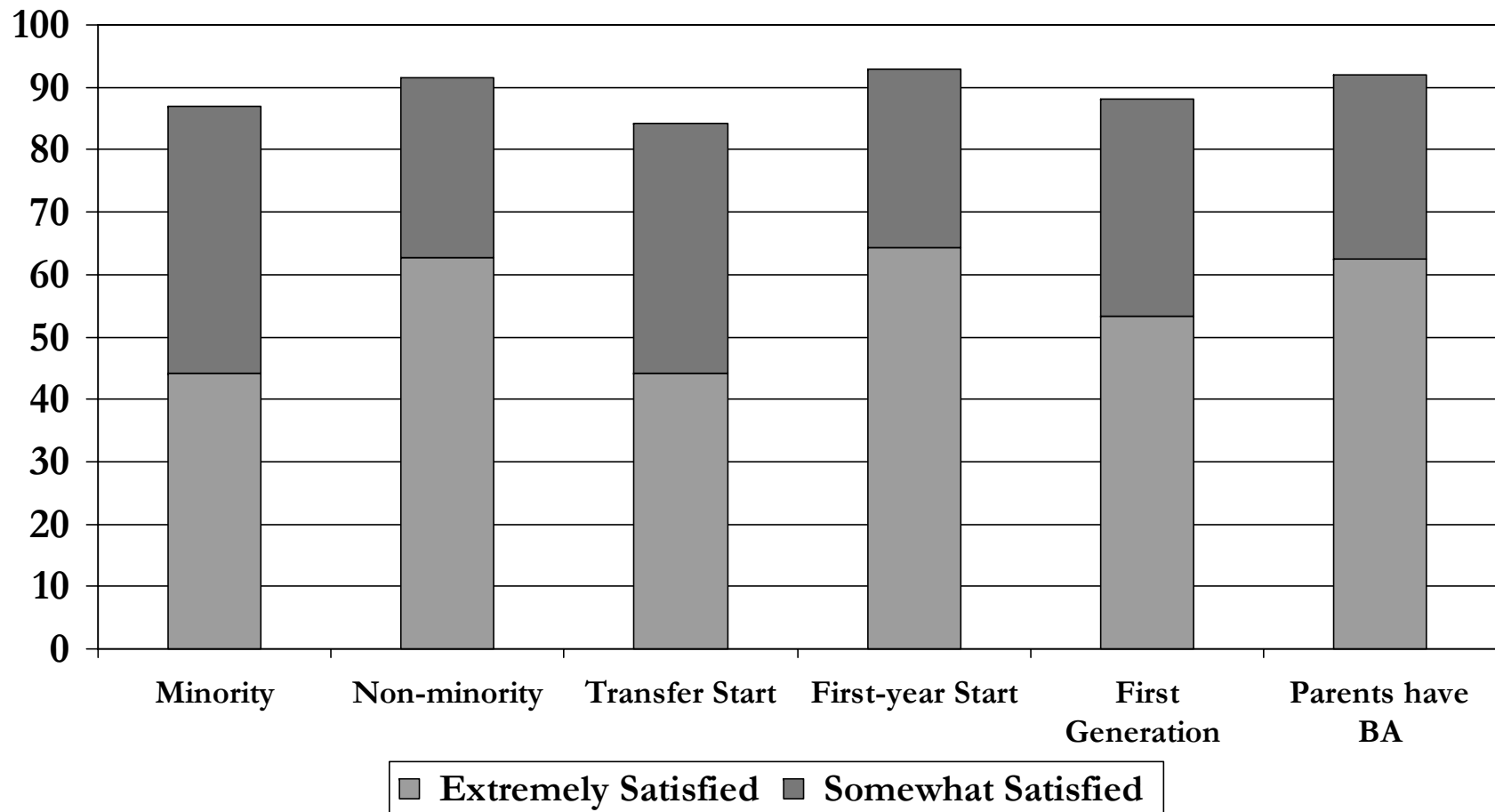


- ❑ 91% satisfied with experience overall – 61% extremely satisfied
- ❑ 91% would attend UW Madison all over again – 57% definitely would
- ❑ 97% Proud to be a Badger – 72% strongly agree

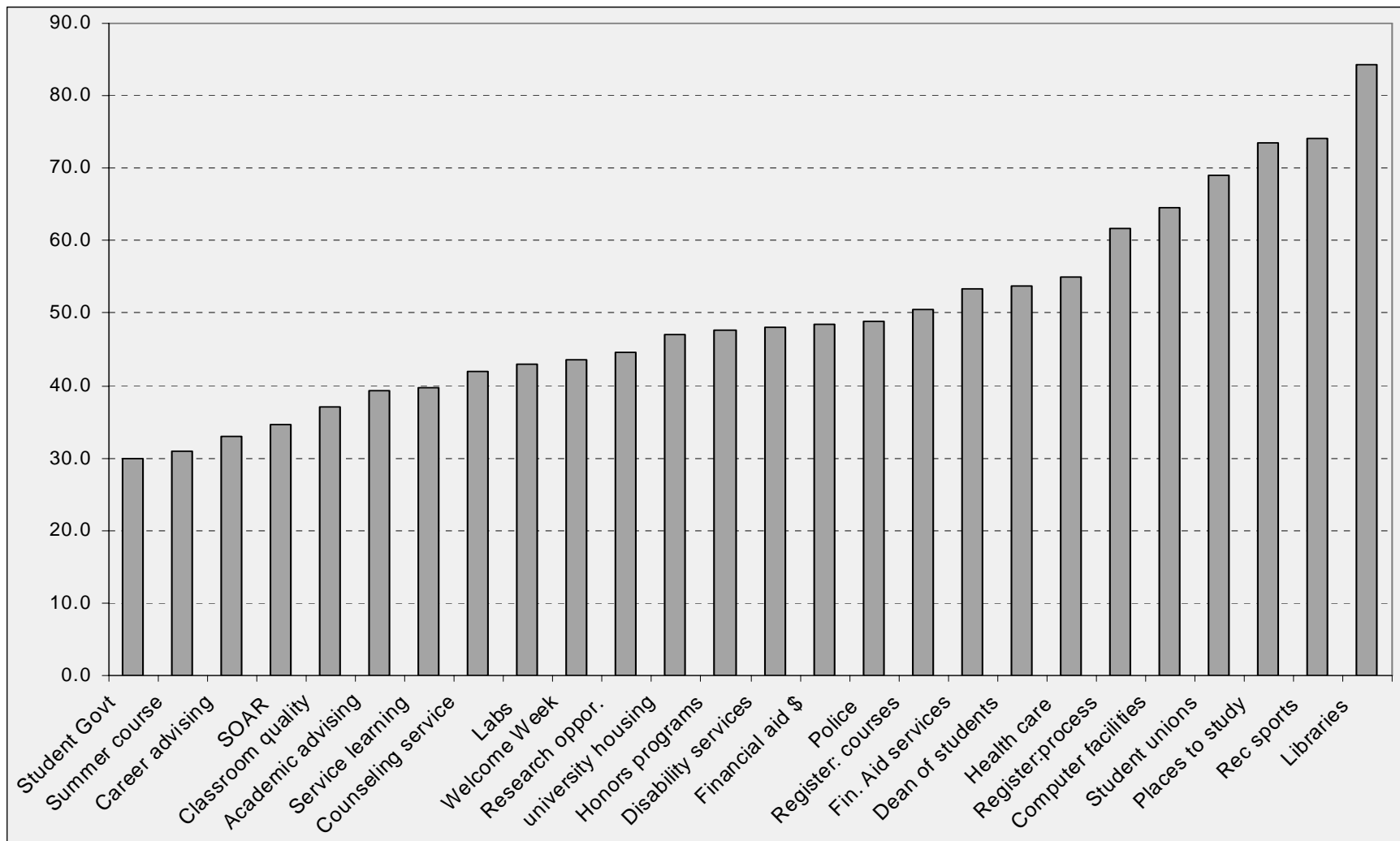
# Has student satisfaction improved over time?




# Do all students feel the same?



# Satisfaction with Services and Facilities: % Rated Excellent or Very Good





---

For further information about the undergraduate student survey:

[http://apa.wisc.edu/performance\\_students\\_surveys.html](http://apa.wisc.edu/performance_students_surveys.html)

For information about accessing the 2006 data set, contact Margaret Harrigan at [harrigan@vc.wisc.edu](mailto:harrigan@vc.wisc.edu)