

University of Wisconsin--Milwaukee

**FACT BOOK**  
**2005-06**

Office of Assessment & Institutional Research  
P.O. Box 413  
Milwaukee, WI 53201

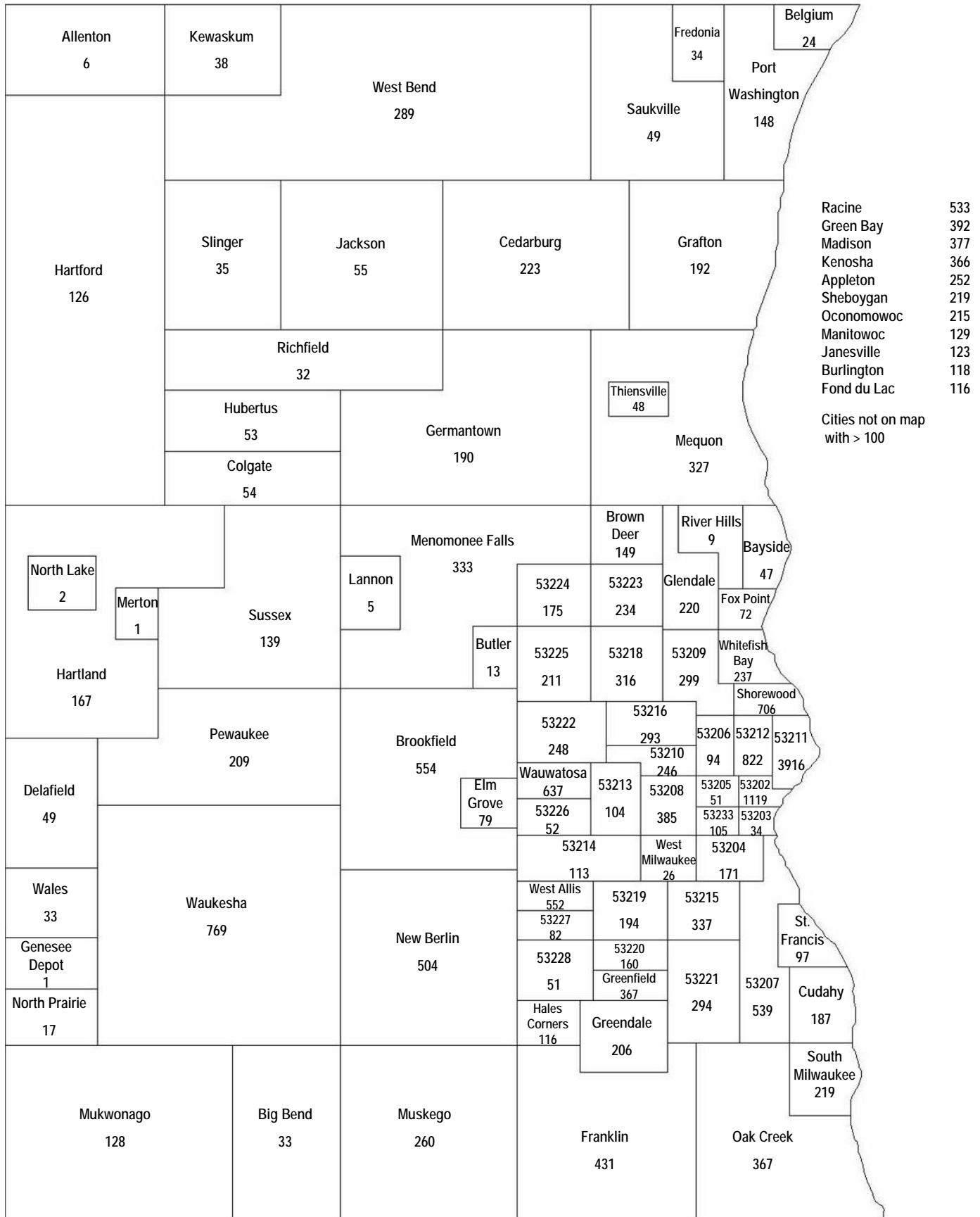
**Factbook 2005-06**  
**Table of Contents**

Table of Contents.....	2
Student Characteristics	
Fall 2005	
Students Residing in the Milwaukee Area.....	4
Enrollment By County From Which Admitted.....	5
Ten Year History	
New Freshmen by High School - Sorted by Attendance.....	6
New Freshmen by High School - Sorted by City.....	10
New Transfers by Previous College - Sorted by Attendance.....	14
New Transfers by Previous College - Sorted by City.....	15
Average Student Age by Year Level.....	16
Fall 2005 Student Profiles	
Undergraduate Students.....	17
Graduate Students.....	18
Headcount Enrollment	
Since 1956	
Fall Enrollment by Year Level.....	19
Fall Enrollment by Undergraduate/Graduate - Graph.....	20
Ten Year History	
Enrollment by Academic Group & Gender.....	21
Enrollment by Year Level & Ethnicity.....	22
Enrollment by Academic Group & Ethnicity.....	25
Fall 2005	
Enrollment by Academic Group & Year Level.....	28
Evening & Weekend Students & Enrollments	
Three Year History	
Enrollment of Evening/Weekend Students by Gender.....	29
Enrollment of Evening/Weekend Students by Ethnicity.....	30
Enrollment of Evening/Weekend Students by Year Level.....	31
Enrollment of Evening/Weekend Students by Academic Group.....	32
Credits Conveyed in Evenings & On Weekends by Academic Group.....	33
Credit Load and FTE Student Enrollment	
Ten Year History	
Student Credit Hours by Year Level.....	34
FTE Enrollment by Year Level.....	35
Average Credit Load by Academic Group.....	36
Average Credit Load by Year Level.....	38
Fall 2005	
FTE by Academic Group and Year Level.....	39
Credits Conveyed	
Fall 2005	
Credits Conveyed by Subject and Year Level.....	40
Credit Affinity.....	44
Three Year History	
Credits Conveyed by Subject - Fall Semesters.....	45

**Factbook 2005-06**  
**Table of Contents**

Grades	
Ten Year History	
Semester Grade Point Average by Year Level.....	48
Semester Grade Point Average by Student Academic Group.....	49
Fall 2005	
Semester Grade Point Average by Student Academic Group & Year Level.....	51
Degrees Granted	
Since 1956	
Degrees Granted by Degree Level.....	52
History of Degrees Granted - Graph.....	54
Fall 2005	
Academic Majors by Degree Level.....	55
Ten Year History	
Degrees Granted by Gender and Ethnicity.....	57
Degrees by Major within Academic Group.....	59
Grants, Loans & Fees	
Financial Aid Programs	64
History	
Sources of Financial Aid	65
Semester Tuition and Fees for Full Time Students.....	66
University Financial Data	
Fiscal Year 2005-06	
Source of Funds - All Funds.....	68
Use of Funds by Program - All Funds.....	69
Use of Funds by Major Expenditure - All Funds.....	70
Use of Funds by Program - State Program Funds.....	71
State Program Funds By Division & Program.....	72
Faculty & Staff Employment	
10 Year History	
Ranked Faculty, Academic Staff & Classified Staff	73
Instructional Staff FTE by School/College	74
Fall 2004	
Unclass & Class Staff by Appt Type	75
Instructional Staff FTE by Curricular Area	76
Organization Chart.....	78
Facilities	
Fall 2004	
Campus Acreage by County	79
General Building Report - Space Inventory Data.....	80
Glossary	82

Fall 2005 Students Residing in the Milwaukee Area



Fall 2005 Enrollment by County from which Admitted



Other U.S. States 1,379  
 Other Countries and US Territories 437  
 Undetermined 2,672

# University of Wisconsin--Milwaukee

## New Freshmen By High School - Sorted By Attendance

		Fall	Fall	Fall	Fall	Fall	Fall	Fall	Fall	Fall	Fall	Fall	10
		1996	1997	1998	1999	2000	2001	2002	2003	2004	2005	Year	Total
Pius XI High School	Milwaukee	63	83	72	68	49	44	54	70	65	68	636	
Nicolet High School	Glendale	48	42	58	49	54	54	62	67	65	55	554	
Riverside Univ High School	Milwaukee	36	35	45	39	45	60	46	50	48	65	469	
Homestead High School	Mequon	28	43	45	40	45	36	49	59	65	56	466	
Rufus King High School	Milwaukee	45	25	41	48	27	38	62	49	45	44	424	
Wauwatosa East High School	Wauwatosa	28	43	40	36	45	34	35	48	36	56	401	
Thomas More High School	Milwaukee	30	47	36	35	38	40	33	30	46	60	395	
Oak Creek Senior High School	Oak Creek	21	23	36	39	44	48	47	45	32	48	383	
Nathan Hale High School	West Allis	38	38	39	40	36	35	26	31	39	55	377	
Alexander Hamilton High School	Milwaukee	26	39	46	45	36	39	32	42	30	33	368	
West Allis Central H S	West Allis	30	27	39	44	34	31	28	35	41	44	353	
Menomonee Falls High School	Menomonee Falls	15	21	28	43	34	33	37	37	50	51	349	
Arrowhead High School	Hartland	20	20	15	28	39	24	43	37	52	69	347	
Brookfield Central High School	Brookfield	17	26	45	27	31	36	26	47	37	54	346	
Brookfield East High School	Brookfield	31	21	28	30	32	39	31	42	35	56	345	
Franklin High School	Franklin	12	24	21	28	30	26	49	41	43	58	332	
Greenfield High School	Greenfield	31	30	31	27	33	27	27	35	35	46	322	
Muskego High School	Muskego	18	35	27	28	33	25	20	38	38	51	313	
South Milwaukee Sr High School	South Milwaukee	40	33	27	28	24	27	30	29	35	35	308	
Catholic Memorial High School	Waukesha	28	36	23	29	35	28	33	29	26	35	302	
Pulaski High School	Milwaukee	28	39	32	39	28	35	21	25	25	26	298	
Germantown High School	Germantown	20	19	18	20	29	41	23	26	45	45	286	
Shorewood High School	Shorewood	27	16	21	37	24	28	33	24	42	31	283	
Washington High School	Milwaukee	23	34	40	20	34	33	26	32	19	22	283	
Cedarburg High School	Cedarburg	20	16	19	25	30	25	20	41	41	39	276	
Eisenhower High School	New Berlin	16	17	19	29	31	36	33	29	34	30	274	
Greendale Senior High School	Greendale	10	20	28	26	27	23	40	23	31	45	273	
Wauwatosa West High School	Wauwatosa	18	16	21	13	34	23	23	44	29	49	270	
Green Bay Southwest HS	Green Bay	12	17	22	39	31	27	18	25	29	48	268	
Middleton High School	Middleton	11	8	16	22	28	26	36	29	33	57	266	
Marquette University HS	Milwaukee	20	20	16	17	22	36	19	39	49	26	264	
Whitnall High School	Greenfield	28	19	25	23	31	20	17	25	37	35	260	
Mukwonago High School	Mukwonago	16	24	16	20	19	22	28	39	39	36	259	
William Horlick High School	Racine	25	21	26	17	31	15	19	33	26	31	244	
Tremper High School	Kenosha	24	23	20	19	24	22	21	22	25	43	243	
Milwaukee HS of the Arts	Milwaukee	27	20	26	21	30	26	26	26	18	23	243	
James Madison Memorial H S	Madison	6	8	16	19	16	23	31	43	35	41	238	
Wisconsin Lutheran High School	Milwaukee	19	17	23	16	18	21	27	28	33	34	236	
Whitefish Bay High School	Whitefish Bay	15	25	26	28	22	23	14	23	22	30	228	
Bay View High School	Milwaukee	13	21	25	41	28	26	17	18	16	23	228	
Kettle Moraine High School	Wales	8	19	13	9	25	22	23	31	35	36	221	
Cudahy High School	Cudahy	20	25	14	30	17	28	28	19	19	20	220	
Hamilton High School	Sussex	23	11	18	12	25	20	34	21	29	25	218	
Oconomowoc High School	Oconomowoc	17	14	14	20	22	20	19	30	24	36	216	
Waukesha West High School	Waukesha	20	14	15	24	15	18	24	28	20	31	209	
Harold S Vincent High School	Milwaukee	31	18	15	16	27	22	32	16	15	15	207	
Grafton Senior High School	Grafton	18	17	34	10	27	7	27	26	12	26	204	
Washington Park High School	Racine	21	10	13	15	25	23	34	19	18	24	202	
Preble High School	Green Bay	5	10	8	12	19	24	25	31	35	31	200	
Appleton North High School	Appleton	10	12	11	14	10	25	26	34	18	29	189	
Jerome I Case Sr High School	Racine	14	19	15	19	17	18	19	15	22	31	189	

Note: Includes only those high schools from which 10 or more students enrolled during any of the 10 fall semesters. This list is sorted in decreasing order by the 10 year total number of students from each high school.

# University of Wisconsin--Milwaukee

## New Freshmen By High School - Sorted By Attendance

		Fall 1996	Fall 1997	Fall 1998	Fall 1999	Fall 2000	Fall 2001	Fall 2002	Fall 2003	Fall 2004	Fall 2005	10 Year Total
Waukesha North High School	Waukesha	8	9	16	14	22	22	21	24	27	26	189
James Madison University H S	Milwaukee	11	17	13	14	26	28	22	20	19	17	187
Port Washington High School	Port Washington	10	13	16	21	8	11	20	36	29	23	187
Milwaukee Lutheran High School	Milwaukee	17	10	26	21	22	21	22	22	11	11	183
Waukesha South High School	Waukesha	21	13	9	14	18	26	24	15	18	22	180
Madison West High School	Madison	7	11	9	15	23	19	20	33	25	16	178
New Berlin West High School	New Berlin	7	12	22	19	7	17	15	25	24	27	175
Hartford Union High School	Hartford	8	10	9	13	15	12	16	26	33	33	175
Fond du Lac High School	Fond du Lac	15	11	11	21	27	13	16	24	17	19	174
Sheboygan North High School	Sheboygan	12	12	10	8	16	19	20	15	22	40	174
Brown Deer High School	Brown Deer	3	11	16	11	18	21	25	19	22	24	170
Lynde and Bradley Tech/Trade	Milwaukee	13	23	23	16	18	21	15	10	15	15	169
GED Tests	High School Equivalency	26	27	22	29	27	24	0	2	2	4	163
Sheboygan South High School	Sheboygan	10	13	22	18	12	18	23	7	22	17	162
Appleton West High School	Appleton	9	15	11	9	9	13	17	25	23	29	160
Mary D Bradford High School	Kenosha	6	17	10	13	9	11	15	26	22	23	152
Verona Area High School	Verona	4	2	5	7	7	8	22	34	19	44	152
Bay Port High School	Green Bay	12	16	10	7	13	17	21	18	18	17	149
South Division High School	Milwaukee	16	21	28	17	18	10	13	6	13	6	148
John Marshall High School	Milwaukee	14	19	17	18	19	15	12	11	13	8	146
Notre Dame Academy	Green Bay	7	6	13	11	25	18	16	15	8	26	145
West Bend West High School	West Bend	11	10	8	8	20	19	17	21	14	16	144
Pewaukee High School	Pewaukee	4	8	12	13	10	15	21	22	17	22	144
Dominican High School	Whitefish Bay	15	16	18	12	23	10	16	10	20	3	143
Sun Prairie Senior High School	Sun Prairie	12	7	2	6	13	12	24	23	26	16	141
Saint Catherines High School	Racine	5	14	25	13	11	8	19	19	12	15	141
Martin Luther High School	Greendale	11	18	20	12	11	12	13	19	11	14	141
West Bend East High School	West Bend	12	13	16	11	13	20	13	16	13	13	140
Burlington High School	Burlington	8	8	10	21	15	9	11	15	19	24	140
Solomon Juneau Business H S	Milwaukee	19	11	15	17	14	14	13	11	15	11	140
Ashwaubenon High School	Green Bay	11	8	6	15	11	15	14	18	20	20	138
Lincoln Senior High School	Manitowoc	8	7	8	3	15	12	13	16	33	22	137
Saint Joan Antida High School	Milwaukee	18	8	11	17	15	14	11	11	9	11	125
Appleton High School East	Appleton	7	9	7	8	10	13	20	14	21	15	124
De Pere High School	De Pere	11	8	6	12	8	7	17	14	17	21	121
Robert M Lafollette HS	Madison	7	7	8	4	11	8	16	18	16	24	119
Beloit Memorial High School	Beloit	10	8	8	14	11	12	17	15	11	12	118
Waterford Union High School	Waterford	7	4	10	18	8	10	8	13	17	16	111
Custer High School	Milwaukee	15	14	11	19	9	13	13	6	9	2	111
Xavier High School	Appleton		8	10	12	11	28	15	13	7	7	111
Neenah High School	Neenah	16	3	4	2	5	1	18	18	22	20	109
Joseph A Craig High School	Janesville	2	5	1	9	2	12	10	20	22	25	108
Kaukauna Senior High School	Kaukauna	7	6		5	8	16	5	25	15	20	107
Saint Francis High School	Saint Francis	9	10	10	9	10	7	8	13	13	17	106
Kimberly High School	Kimberly	5	3	7	8	6	10	16	6	19	22	102
Plymouth High School	Plymouth	2	3	8	9	7	10	12	16	15	19	101
Little Chute High School	Little Chute	6	7	11	10	4	15	12	14	12	8	99
Divine Savior-Holy Angels H S	Milwaukee	5	10	6	17	11	7	10	11	9	13	99
Madison East Senior HS	Madison	3	6	1	9	6	9	6	14	25	18	97
Oshkosh West High School	Oshkosh	2	9	6	9	5	14	6	15	17	12	95

Note: Includes only those high schools from which 10 or more students enrolled during any of the 10 fall semesters. This list is sorted in decreasing order by the 10 year total number of students from each high school.

# University of Wisconsin--Milwaukee

## New Freshmen By High School - Sorted By Attendance

		Fall	Fall	Fall	Fall	Fall	Fall	Fall	Fall	Fall	Fall	Fall	10
		1996	1997	1998	1999	2000	2001	2002	2003	2004	2005	Year	Total
Green Bay East High School	Green Bay	5	5	8	6	7	17	11	8	17	11	95	
Badger High School	Lake Geneva	6	5	9	9	16	17	7	8	9	8	94	
Wilmot Union High School	Wilmot	8	7	9	9	8	10	11	10	7	11	90	
Oregon High School	Oregon		1	4	5	12	6	6	24	13	17	88	
Green Bay West High School	Green Bay	6	4	8	9	4	5	6	12	13	17	84	
Heritage Christian High School	Milwaukee	2	8	6	11	8	9	8	20	6	6	84	
Stevens Point Area High School	Stevens Point	3	4	6	5	9	7	7	12	17	11	81	
Monona Grove High School	Monona	4	6	5	3	2	3	12	15	7	23	80	
Kewaskum High School	Kewaskum	8	11	9	7	1	5	8	4	8	19	80	
Westosha Central High School	Salem	7	2	8	4	3	9	8	11	10	18	80	
Slinger High School	Slinger	6	7	5	6	13	6	7	11	8	11	80	
George Parker High School	Janesville	3	7	2	9	5	5	7	11	19	10	78	
De Forest High School	De Forest	2	2	4		13	12	9	8	19	9	78	
Lincoln High School	Wisconsin Rapids	1	5	11	8	11	4	7	13	12	6	78	
Watertown High School	Watertown	5	5	2	6	8	5	10	15	8	14	78	
Elkhorn Area High School	Elkhorn	3	1	5	4	11	6	15	11	12	10	78	
McFarland High School	Mc Farland	7	6	3	6	4	5	4	17	9	16	77	
Messmer High School	Milwaukee	11	6	9	8	7	7	4	2	7	16	77	
Pulaski Community High School	Pulaski	4	9	3	6	11	5	5	16	6	10	75	
Fox Valley Lutheran High Sch	Appleton	2	8	6	7	9	14	6	7	7	8	74	
Roncalli High School	Manitowoc	3	13	10	7	6	6	8	4	9	7	73	
Menasha Senior High School	Menasha	5	3	11	4	5	7	15	7	5	11	73	
Luxemburg Casco High School	Luxemburg	4	9	11	2	7	5	9	10	6	8	71	
Fort Atkinson High School	Ft Atkinson		6	4	8	3	8	8	12	14	6	69	
Edgewood High School	Madison		2	9	1	3	6	9	14	11	13	68	
Union Grove High School	Union Grove	5	2	5	6	7	11	7	9	3	13	68	
Monroe Senior High School	Monroe	6	2	3	4	4	3	10	8	19	7	66	
Two Rivers High School	Two Rivers	5	12	5	11	6	4	3	8	5	7	66	
Saint Marys Springs H S	Fond du Lac		5	3	7	7	9	5	15	6	9	66	
Walden III High School	Racine	2	5	5	10	9	9	9	2	8	3	62	
Milton High School	Milton	4	4		5	7	6	8	6	8	14	62	
Stoughton High School	Stoughton			8	8	4	4	4	20	7	6	61	
Chilton Senior High School	Chilton	6	5	3	9	10	10	6	7	3	2	61	
North Division High School	Milwaukee	8	9	6	6	2	7	4	1	2	14	59	
Sturgeon Bay High School	Sturgeon Bay			3	4	4	10	5	10	16	7	59	
Waunakee Community High School	Waunakee	1	1	2	2	2	3	5	13	7	22	58	
East Troy High School	East Troy		4	4	8	1	1	9	11	3	16	57	
Oshkosh North High School	Oshkosh	2	1	5	3	5	5	9	9	14	4	57	
Sauk Prairie High School	Prairie du Sac	4	5	3	7	4	3	1	9	14	6	56	
Kettle Moraine Lutheran High	Jackson	2	1	6	4	2	3	3	10	8	15	54	
New Holstein High School	New Holstein	2	3	2	5	3	9	4	11	8	6	53	
Kiel High School	Kiel	8	1	2		4	7	8	4	8	10	52	
Indian Trail Academy	Kenosha				2		3	18	10	7	9	49	
Portage High School	Portage	2	1	1	4	5	7	10	4	7	8	49	
Ozaukee High School	Fredonia	1	2	9	1	7	3	3	5	10	7	48	
West De Pere High School	De Pere	3	5	1	1	1	2	2	12	11	9	47	
Hudson Senior High School	Hudson	1	3	1			1	5	12	8	12	43	
Big Foot High School	Walworth	12	4	4	2	4	1	6	4	3	2	42	
Campbellsport High School	Campbellsport	2	2	4	3	7	1	10	3	6	4	42	
New London High School	New London	1	2	1	2	4	7	5	11	3	6	42	

Note: Includes only those high schools from which 10 or more students enrolled during any of the 10 fall semesters. This list is sorted in decreasing order by the 10 year total number of students from each high school.

University of Wisconsin--Milwaukee

**New Freshmen By High School - Sorted By Attendance**

		Fall 1996	Fall 1997	Fall 1998	Fall 1999	Fall 2000	Fall 2001	Fall 2002	Fall 2003	Fall 2004	Fall 2005	10 Year Total
Eau Claire Mem High School	Eau Claire	1		1	5		3	6	3	14	8	41
Delavan-Darien High School	Delavan	1	2		3	5	5	1	7	4	13	41
Milwaukee School of Language	Milwaukee					4	5	12	8	6	6	41
Freedom High School	Freedom		5	3	4	4	4	3	10	3		36
M.P.S. Alternative High School	Milwaukee	8	11	1	5	5	4	1			1	36
Southern Door High School	Brussels	2	2		1	4	2	4	2	11	5	33
River Valley High School	Spring Green					3	1	3	9	3	12	31
Columbus Senior High School	Columbus	2	2		1	1	3	2	5	2	10	28
Baraboo High School	Baraboo			2	2	1	1	5	5	11	1	28
Platteville High School	Platteville	2		1	4	1	2	4	10	1	2	27
Prairie du Chien Sr High Sch	Prairie du Chien				2	4	1	2		3	11	23

Note: Includes only those high schools from which 10 or more students enrolled during any of the 10 fall semesters. This list is sorted in decreasing order by the 10 year total number of students from each high school.

# University of Wisconsin--Milwaukee

## New Freshmen By High School - Sorted By City

		Fall 1996	Fall 1997	Fall 1998	Fall 1999	Fall 2000	Fall 2001	Fall 2002	Fall 2003	Fall 2004	Fall 2005	10 Year Total
Appleton	Appleton High School East	7	9	7	8	10	13	20	14	21	15	124
	Appleton North High School	10	12	11	14	10	25	26	34	18	29	189
	Appleton West High School	9	15	11	9	9	13	17	25	23	29	160
	Fox Valley Lutheran High Sch	2	8	6	7	9	14	6	7	7	8	74
	Xavier High School		8	10	12	11	28	15	13	7	7	111
Baraboo	Baraboo High School			2	2	1	1	5	5	11	1	28
Beloit	Beloit Memorial High School	10	8	8	14	11	12	17	15	11	12	118
Brookfield	Brookfield Central High School	17	26	45	27	31	36	26	47	37	54	346
	Brookfield East High School	31	21	28	30	32	39	31	42	35	56	345
Brown Deer	Brown Deer High School	3	11	16	11	18	21	25	19	22	24	170
Brussels	Southern Door High School	2	2		1	4	2	4	2	11	5	33
Burlington	Burlington High School	8	8	10	21	15	9	11	15	19	24	140
Campbellsport	Campbellsport High School	2	2	4	3	7	1	10	3	6	4	42
Cedarburg	Cedarburg High School	20	16	19	25	30	25	20	41	41	39	276
Chilton	Chilton Senior High School	6	5	3	9	10	10	6	7	3	2	61
Columbus	Columbus Senior High School	2	2		1	1	3	2	5	2	10	28
Cudahy	Cudahy High School	20	25	14	30	17	28	28	19	19	20	220
De Forest	De Forest High School	2	2	4		13	12	9	8	19	9	78
De Pere	De Pere High School	11	8	6	12	8	7	17	14	17	21	121
	West De Pere High School	3	5	1	1	1	2	2	12	11	9	47
Delavan	Delavan-Darien High School	1	2		3	5	5	1	7	4	13	41
East Troy	East Troy High School		4	4	8	1	1	9	11	3	16	57
Eau Claire	Eau Claire Mem High School	1		1	5		3	6	3	14	8	41
Elkhorn	Elkhorn Area High School	3	1	5	4	11	6	15	11	12	10	78
Fond du Lac	Fond du Lac High School	15	11	11	21	27	13	16	24	17	19	174
	Saint Marys Springs H S		5	3	7	7	9	5	15	6	9	66
Franklin	Franklin High School	12	24	21	28	30	26	49	41	43	58	332
Fredonia	Ozaukee High School	1	2	9	1	7	3	3	5	10	7	48
Freedom	Freedom High School		5	3	4	4	4	3	10	3		36
Ft Atkinson	Fort Atkinson High School		6	4	8	3	8	8	12	14	6	69
Germantown	Germantown High School	20	19	18	20	29	41	23	26	45	45	286
Glendale	Nicolet High School	48	42	58	49	54	54	62	67	65	55	554
Grafton	Grafton Senior High School	18	17	34	10	27	7	27	26	12	26	204
Green Bay	Ashwaubenon High School	11	8	6	15	11	15	14	18	20	20	138
	Bay Port High School	12	16	10	7	13	17	21	18	18	17	149
	Green Bay East High School	5	5	8	6	7	17	11	8	17	11	95
	Green Bay Southwest HS	12	17	22	39	31	27	18	25	29	48	268
	Green Bay West High School	6	4	8	9	4	5	6	12	13	17	84
	Notre Dame Academy	7	6	13	11	25	18	16	15	8	26	145
	Preble High School	5	10	8	12	19	24	25	31	35	31	200
Greendale	Greendale Senior High School	10	20	28	26	27	23	40	23	31	45	273
	Martin Luther High School	11	18	20	12	11	12	13	19	11	14	141
Greenfield	Greenfield High School	31	30	31	27	33	27	27	35	35	46	322
	Whitnall High School	28	19	25	23	31	20	17	25	37	35	260
Hartford	Hartford Union High School	8	10	9	13	15	12	16	26	33	33	175
Hartland	Arrowhead High School	20	20	15	28	39	24	43	37	52	69	347
High School Equivalency	GED Tests	26	27	22	29	27	24	0	2	2	4	163
Hudson	Hudson Senior High School	1	3	1			1	5	12	8	12	43
Jackson	Kettle Moraine Lutheran High	2	1	6	4	2	3	3	10	8	15	54
Janesville	George Parker High School	3	7	2	9	5	5	7	11	19	10	78
	Joseph A Craig High School	2	5	1	9	2	12	10	20	22	25	108

Note: Includes only those high schools from which 10 or more students enrolled during any of the 10 fall semesters.  
This list is sorted by city.

# University of Wisconsin--Milwaukee

## New Freshmen By High School - Sorted By City

		Fall	Fall	Fall	Fall	Fall	Fall	Fall	Fall	Fall	Fall	Fall	10
		1996	1997	1998	1999	2000	2001	2002	2003	2004	2005		Year
													Total
Kaukauna	Kaukauna Senior High School	7	6		5	8	16	5	25	15	20		107
Kenosha	Indian Trail Academy				2		3	18	10	7	9		49
	Mary D Bradford High School	6	17	10	13	9	11	15	26	22	23		152
	Tremper High School	24	23	20	19	24	22	21	22	25	43		243
Kewaskum	Kewaskum High School	8	11	9	7	1	5	8	4	8	19		80
Kiel	Kiel High School	8	1	2		4	7	8	4	8	10		52
Kimberly	Kimberly High School	5	3	7	8	6	10	16	6	19	22		102
Lake Geneva	Badger High School	6	5	9	9	16	17	7	8	9	8		94
Little Chute	Little Chute High School	6	7	11	10	4	15	12	14	12	8		99
Luxemburg	Luxemburg Casco High School	4	9	11	2	7	5	9	10	6	8		71
Madison	Edgewood High School		2	9	1	3	6	9	14	11	13		68
	James Madison Memorial H S	6	8	16	19	16	23	31	43	35	41		238
	Madison East Senior HS	3	6	1	9	6	9	6	14	25	18		97
	Madison West High School	7	11	9	15	23	19	20	33	25	16		178
	Robert M Lafollette HS	7	7	8	4	11	8	16	18	16	24		119
Manitowoc	Lincoln Senior High School	8	7	8	3	15	12	13	16	33	22		137
	Roncalli High School	3	13	10	7	6	6	8	4	9	7		73
Mc Farland	McFarland High School	7	6	3	6	4	5	4	17	9	16		77
Menasha	Menasha Senior High School	5	3	11	4	5	7	15	7	5	11		73
Menomonee Falls	Menomonee Falls High School	15	21	28	43	34	33	37	37	50	51		349
Mequon	Homestead High School	28	43	45	40	45	36	49	59	65	56		466
Middleton	Middleton High School	11	8	16	22	28	26	36	29	33	57		266
Milton	Milton High School	4	4		5	7	6	8	6	8	14		62
Milwaukee	Alexander Hamilton High School	26	39	46	45	36	39	32	42	30	33		368
	Bay View High School	13	21	25	41	28	26	17	18	16	23		228
	Custer High School	15	14	11	19	9	13	13	6	9	2		111
	Divine Savior-Holy Angels H S	5	10	6	17	11	7	10	11	9	13		99
	Harold S Vincent High School	31	18	15	16	27	22	32	16	15	15		207
	Heritage Christian High School	2	8	6	11	8	9	8	20	6	6		84
	James Madison University H S	11	17	13	14	26	28	22	20	19	17		187
	John Marshall High School	14	19	17	18	19	15	12	11	13	8		146
	Lynde and Bradley Tech/Trade	13	23	23	16	18	21	15	10	15	15		169
	M.P.S. Alternative High School	8	11	1	5	5	4	1				1	36
	Marquette University HS	20	20	16	17	22	36	19	39	49	26		264
	Messmer High School	11	6	9	8	7	7	4	2	7	16		77
	Milwaukee HS of the Arts	27	20	26	21	30	26	26	26	18	23		243
	Milwaukee Lutheran High School	17	10	26	21	22	21	22	22	11	11		183
	Milwaukee School of Language					4	5	12	8	6	6		41
	North Division High School	8	9	6	6	2	7	4	1	2	14		59
	Pius XI High School	63	83	72	68	49	44	54	70	65	68		636
	Pulaski High School	28	39	32	39	28	35	21	25	25	26		298
	Riverside Univ High School	36	35	45	39	45	60	46	50	48	65		469
	Rufus King High School	45	25	41	48	27	38	62	49	45	44		424
Saint Joan Antida High School	18	8	11	17	15	14	11	11	9	11		125	
Solomon Juneau Business H S	19	11	15	17	14	14	13	11	15	11		140	
South Division High School	16	21	28	17	18	10	13	6	13	6		148	
Thomas More High School	30	47	36	35	38	40	33	30	46	60		395	
Washington High School	23	34	40	20	34	33	26	32	19	22		283	
Wisconsin Lutheran High School	19	17	23	16	18	21	27	28	33	34		236	
Monona	Monona Grove High School	4	6	5	3	2	3	12	15	7	23		80

Note: Includes only those high schools from which 10 or more students enrolled during any of the 10 fall semesters. This list is sorted by city.

University of Wisconsin--Milwaukee

**New Freshmen By High School - Sorted By City**

		Fall 1996	Fall 1997	Fall 1998	Fall 1999	Fall 2000	Fall 2001	Fall 2002	Fall 2003	Fall 2004	Fall 2005	10 Year Total
Monroe	Monroe Senior High School	6	2	3	4	4	3	10	8	19	7	66
Mukwonago	Mukwonago High School	16	24	16	20	19	22	28	39	39	36	259
Muskego	Muskego High School	18	35	27	28	33	25	20	38	38	51	313
Neenah	Neenah High School	16	3	4	2	5	1	18	18	22	20	109
New Berlin	Eisenhower High School	16	17	19	29	31	36	33	29	34	30	274
	New Berlin West High School	7	12	22	19	7	17	15	25	24	27	175
New Holstein	New Holstein High School	2	3	2	5	3	9	4	11	8	6	53
New London	New London High School	1	2	1	2	4	7	5	11	3	6	42
Oak Creek	Oak Creek Senior High School	21	23	36	39	44	48	47	45	32	48	383
Oconomowoc	Oconomowoc High School	17	14	14	20	22	20	19	30	24	36	216
Oregon	Oregon High School		1	4	5	12	6	6	24	13	17	88
Oshkosh	Oshkosh North High School	2	1	5	3	5	5	9	9	14	4	57
	Oshkosh West High School	2	9	6	9	5	14	6	15	17	12	95
Pewaukee	Pewaukee High School	4	8	12	13	10	15	21	22	17	22	144
Platteville	Platteville High School	2		1	4	1	2	4	10	1	2	27
Plymouth	Plymouth High School	2	3	8	9	7	10	12	16	15	19	101
Port Washington	Port Washington High School	10	13	16	21	8	11	20	36	29	23	187
Portage	Portage High School	2	1	1	4	5	7	10	4	7	8	49
Prairie du Chien	Prairie du Chien Sr High Sch				2	4	1	2		3	11	23
Prairie du Sac	Sauk Prairie High School	4	5	3	7	4	3	1	9	14	6	56
Pulaski	Pulaski Community High School	4	9	3	6	11	5	5	16	6	10	75
Racine	Jerome I Case Sr High School	14	19	15	19	17	18	19	15	22	31	189
	Saint Catherines High School	5	14	25	13	11	8	19	19	12	15	141
	Walden III High School	2	5	5	10	9	9	9	2	8	3	62
	Washington Park High School	21	10	13	15	25	23	34	19	18	24	202
	William Horlick High School	25	21	26	17	31	15	19	33	26	31	244
Saint Francis	Saint Francis High School	9	10	10	9	10	7	8	13	13	17	106
Salem	Westosha Central High School	7	2	8	4	3	9	8	11	10	18	80
Sheboygan	Sheboygan North High School	12	12	10	8	16	19	20	15	22	40	174
	Sheboygan South High School	10	13	22	18	12	18	23	7	22	17	162
Shorewood	Shorewood High School	27	16	21	37	24	28	33	24	42	31	283
Slinger	Slinger High School	6	7	5	6	13	6	7	11	8	11	80
South Milwaukee	South Milwaukee Sr High School	40	33	27	28	24	27	30	29	35	35	308
Spring Green	River Valley High School					3	1	3	9	3	12	31
Stevens Point	Stevens Point Area High School	3	4	6	5	9	7	7	12	17	11	81
Stoughton	Stoughton High School			8	8	4	4	4	20	7	6	61
Sturgeon Bay	Sturgeon Bay High School			3	4	4	10	5	10	16	7	59
Sun Prairie	Sun Prairie Senior High School	12	7	2	6	13	12	24	23	26	16	141
Sussex	Hamilton High School	23	11	18	12	25	20	34	21	29	25	218
Two Rivers	Two Rivers High School	5	12	5	11	6	4	3	8	5	7	66
Union Grove	Union Grove High School	5	2	5	6	7	11	7	9	3	13	68
Verona	Verona Area High School	4	2	5	7	7	8	22	34	19	44	152
Wales	Kettle Moraine High School	8	19	13	9	25	22	23	31	35	36	221
Walworth	Big Foot High School	12	4	4	2	4	1	6	4	3	2	42
Waterford	Waterford Union High School	7	4	10	18	8	10	8	13	17	16	111
Watertown	Watertown High School	5	5	2	6	8	5	10	15	8	14	78
Waukesha	Catholic Memorial High School	28	36	23	29	35	28	33	29	26	35	302
	Waukesha North High School	8	9	16	14	22	22	21	24	27	26	189
	Waukesha South High School	21	13	9	14	18	26	24	15	18	22	180
	Waukesha West High School	20	14	15	24	15	18	24	28	20	31	209

Note: Includes only those high schools from which 10 or more students enrolled during any of the 10 fall semesters. This list is sorted by city.

University of Wisconsin--Milwaukee

**New Freshmen By High School - Sorted By City**

		Fall 1996	Fall 1997	Fall 1998	Fall 1999	Fall 2000	Fall 2001	Fall 2002	Fall 2003	Fall 2004	Fall 2005	10 Year Total
Waunakee	Waunakee Community High School	1	1	2	2	2	3	5	13	7	22	58
Wauwatosa	Wauwatosa East High School	28	43	40	36	45	34	35	48	36	56	401
	Wauwatosa West High School	18	16	21	13	34	23	23	44	29	49	270
West Allis	Nathan Hale High School	38	38	39	40	36	35	26	31	39	55	377
	West Allis Central H S	30	27	39	44	34	31	28	35	41	44	353
West Bend	West Bend East High School	12	13	16	11	13	20	13	16	13	13	140
	West Bend West High School	11	10	8	8	20	19	17	21	14	16	144
Whitefish Bay	Dominican High School	15	16	18	12	23	10	16	10	20	3	143
	Whitefish Bay High School	15	25	26	28	22	23	14	23	22	30	228
Wilmot	Wilmot Union High School	8	7	9	9	8	10	11	10	7	11	90
Wisconsin Rapids	Lincoln High School	1	5	11	8	11	4	7	13	12	6	78

Note: Includes only those high schools from which 10 or more students enrolled during any of the 10 fall semesters. This list is sorted by city.

# University of Wisconsin--Milwaukee

## New Transfers By Previous College - Sorted By Attendance

			1997	1998	1999	2000	2001	2002	2003	2004	2005	2006	10 Year Total
Milwaukee Area Technical Col	Milwaukee	WI	235	262	214	260	238	277	298	315	348	306	2,753
UW Waukesha	Waukesha	WI	104	129	142	161	182	218	209	232	213	211	1,801
UW Whitewater	Whitewater	WI	91	109	126	119	136	150	95	119	132	93	1,170
UW Oshkosh	Oshkosh	WI	92	84	98	98	92	83	90	84	108	91	920
UW Madison	Madison	WI	59	84	98	89	81	102	84	115	111	89	912
UW Washington County	West Bend	WI	48	49	67	61	80	117	90	93	97	74	776
UW Parkside	Kenosha	WI	72	78	54	69	73	61	65	71	88	68	699
UW LaCrosse	La Crosse	WI	54	52	52	53	60	42	43	57	64	61	538
UW Stevens Point	Stevens Point	WI	59	44	52	43	41	42	57	49	42	69	498
Univ of Minnesota-Twin Cities	Minneapolis	MN	56	40	47	45	55	44	36	48	43	38	452
UW Green Bay	Green Bay	WI	32	49	36	50	32	50	41	52	50	41	433
UW Eau Claire	Eau Claire	WI	33	36	48	36	35	40	42	58	55	40	423
Madison Area Technical College	Madison	WI	21	21	19	28	28	28	48	66	77	75	411
UW Sheboygan	Sheboygan	WI	27	20	25	35	31	47	53	57	54	49	398
Marquette University	Milwaukee	WI	38	30	32	37	41	33	48	46	49	41	395
Waukesha County Technical Coll	Pewaukee	WI	30	40	50	45	35	47	30	28	39	41	385
UW Platteville	Platteville	WI	38	30	27	30	35	26	33	36	38	28	321
Milw School of Engineering	Milwaukee	WI	27	23	30	31	31	26	33	30	34	26	291
UW Manitowoc	Manitowoc	WI	8	14	23	12	18	35	30	34	37	49	260
UW Fox Valley	Menasha	WI	10	15	14	11	20	22	24	38	33	27	214
Carroll College	Waukesha	WI	19	15	19	19	18	28	19	27	23	20	207
UW Stout	Menomonie	WI	24	17	12	24	16	22	16	22	22	19	194
Winona State University	Winona	MN	16	21	22	14	13	19	24	16	20	25	190
Milwaukee Inst of Art & Design	Milwaukee	WI	9	16	20	21	18	14	10	10	14	10	142
UW Rock County	Janesville	WI	11	6	6	12	6	20	14	16	19	30	140
UW Fond du Lac	Fond Du Lac	WI	7	11	16	7	10	11	13	21	17	23	136
Alverno College	Milwaukee	WI	8	12	9	11	15	9	13	16	21	17	131
St. Norbert College	Depere	WI	18	11	12	16	9	17	11	13	8	9	124
Cardinal Stritch University	Milwaukee	WI	6	9	8	12	10	14	14	8	20	16	117
UW Marathon County	Wausau	WI	13	16	8	6	1	13	15	15	12	16	115
Mount Mary College	Milwaukee	WI	10	8	14	12	13	12	10	8	10	9	106
Gateway Technical College	Kenosha	WI	4	7	2	6	8	9	9	12	17	25	99
Lakeland College	Sheboygan	WI	9	12	13	11	8	14	5	8	9	5	94
Carthage College	Kenosha	WI	7	12	12	7	7	15	8	8	6	9	91
Concordia University Wisconsin	Mequon	WI	5	6	2	10	9	8	10	1	19	16	86
UW Baraboo/Sauk County	Baraboo	WI	3	1	2	4	9	5	7	15	17	19	82
Edgewood College	Madison	WI	3	9	4	7	12	14	8	7	8	9	81
Wisconsin Lutheran College	Milwaukee	WI	9	3	8	5	3	8	11	12	5	12	76
Northern Michigan University	Marquette	MI	6	5	8	4	7	7	6	13	14	4	74
Northeast Tech College	Green Bay	WI	1		1	10	4	8	11	8	12	15	70
Marian College of Fond du Lac	Fond du Lac	WI	9	9	7	6	10	12	4	4	3	5	69
UW Extension	Madison	WI	7	4	8	11	10	10	9	3	2		64
Arizona State University	Tempe	AZ	7	5	2	6	3	7	5	6	11	9	61
Inter-American Univ-San German	Puerto Rico		1		2	4	6	3	6	7	10	2	41
Mara Community College	Malaysia		28	11			1						40
University of Kansas	Lawrence	KS	1	2	5		11	7	5	2	1	2	36

Note: Includes only those colleges from which 10 or more students enrolled during any of the 10 academic years. This list is sorted in decreasing order by the 10 year total number of students from each college.

University of Wisconsin--Milwaukee

**New Transfers By Previous College - Sorted By City**

		1997	1998	1999	2000	2001	2002	2003	2004	2005	2006	10 Year Total	
	Malaysia	Mara Community College	28	11		1						40	
	Puerto Rico	Inter-American Univ-San German	1		2	4	6	3	6	7	10	2	41
AZ	Tempe	Arizona State University	7	5	2	6	3	7	5	6	11	9	61
KS	Lawrence	University of Kansas	1	2	5		11	7	5	2	1	2	36
MI	Marquette	Northern Michigan University	6	5	8	4	7	7	6	13	14	4	74
MN	Minneapolis	Univ of Minnesota-Twin Cities	56	40	47	45	55	44	36	48	43	38	452
	Winona	Winona State University	16	21	22	14	13	19	24	16	20	25	190
WI	Baraboo	UW Baraboo/Sauk County	3	1	2	4	9	5	7	15	17	19	82
	Depere	St. Norbert College	18	11	12	16	9	17	11	13	8	9	124
	Eau Claire	UW Eau Claire	33	36	48	36	35	40	42	58	55	40	423
	Fond du Lac	Marian College of Fond du Lac	9	9	7	6	10	12	4	4	3	5	69
	Fond Du Lac	UW Fond du Lac	7	11	16	7	10	11	13	21	17	23	136
	Green Bay	Northeast Tech College	1		1	10	4	8	11	8	12	15	70
		UW Green Bay	32	49	36	50	32	50	41	52	50	41	433
	Janesville	UW Rock County	11	6	6	12	6	20	14	16	19	30	140
	Kenosha	Carthage College	7	12	12	7	7	15	8	8	6	9	91
		Gateway Technical College	4	7	2	6	8	9	9	12	17	25	99
		UW Parkside	72	78	54	69	73	61	65	71	88	68	699
	La Crosse	UW LaCrosse	54	52	52	53	60	42	43	57	64	61	538
	Madison	Edgewood College	3	9	4	7	12	14	8	7	8	9	81
		Madison Area Technical College	21	21	19	28	28	28	48	66	77	75	411
		UW Extension	7	4	8	11	10	10	9	3	2		64
		UW Madison	59	84	98	89	81	102	84	115	111	89	912
	Manitowoc	UW Manitowoc	8	14	23	12	18	35	30	34	37	49	260
	Menasha	UW Fox Valley	10	15	14	11	20	22	24	38	33	27	214
	Menomonie	UW Stout	24	17	12	24	16	22	16	22	22	19	194
	Mequon	Concordia University Wisconsin	5	6	2	10	9	8	10	1	19	16	86
	Milwaukee	Alverno College	8	12	9	11	15	9	13	16	21	17	131
		Cardinal Stritch University	6	9	8	12	10	14	14	8	20	16	117
		Marquette University	38	30	32	37	41	33	48	46	49	41	395
		Milw School of Engineering	27	23	30	31	31	26	33	30	34	26	291
		Milwaukee Area Technical Col	235	262	214	260	238	277	298	315	348	306	2,753
		Milwaukee Inst of Art & Design	9	16	20	21	18	14	10	10	14	10	142
		Mount Mary College	10	8	14	12	13	12	10	8	10	9	106
		Wisconsin Lutheran College	9	3	8	5	3	8	11	12	5	12	76
	Oshkosh	UW Oshkosh	92	84	98	98	92	83	90	84	108	91	920
	Pewaukee	Waukesha County Technical Coll	30	40	50	45	35	47	30	28	39	41	385
	Platteville	UW Platteville	38	30	27	30	35	26	33	36	38	28	321
	Sheboygan	Lakeland College	9	12	13	11	8	14	5	8	9	5	94
		UW Sheboygan	27	20	25	35	31	47	53	57	54	49	398
	Stevens Point	UW Stevens Point	59	44	52	43	41	42	57	49	42	69	498
	Waukesha	Carroll College	19	15	19	19	18	28	19	27	23	20	207
		UW Waukesha	104	129	142	161	182	218	209	232	213	211	1,801
	Wausau	UW Marathon County	13	16	8	6	1	13	15	15	12	16	115
	West Bend	UW Washington County	48	49	67	61	80	117	90	93	97	74	776
	Whitewater	UW Whitewater	91	109	126	119	136	150	95	119	132	93	1,170

Note: Includes only those colleges from which 10 or more students enrolled during any of the 10 academic years. This list is sorted by city.

University of Wisconsin--Milwaukee

**Average Student Age By Year Level**

	Fall 1997	Fall 1998	Fall 1999	Fall 2000	Fall 2001	Fall 2002	Fall 2003	Fall 2004	Fall 2005
UGRD New Freshman	19.0	18.9	18.8	18.9	18.9	18.7	18.7	18.7	18.7
Other Freshman	22.2	22.0	21.7	21.6	21.8	21.7	21.6	21.5	21.5
Junior	24.5	24.1	23.9	23.8	23.4	23.5	23.5	23.5	23.4
Senior	27.6	27.3	27.1	26.9	26.7	26.4	26.1	26.2	26.1
Sophomore	22.7	22.6	22.4	22.3	22.2	21.8	21.6	21.5	21.5
Special	34.8	35.1	34.9	36.7	37.3	37.8	37.4	37.1	38.2
Subtotal	25.0	24.8	24.4	24.4	24.4	24.1	23.8	23.8	23.7
GRAD Master	32.1	31.9	31.7	32.0	32.0	31.4	31.0	31.0	31.2
Doctoral	36.3	36.3	36.2	36.5	36.0	35.5	35.0	35.0	35.0
Non Degree	36.4	36.1	36.3	36.6	36.2	37.1	36.5	36.7	35.5
Specialist						25.4	28.4	32.4	30.3
Subtotal	33.4	33.2	33.2	33.4	33.3	32.8	32.4	32.5	32.5
Total	26.8	26.4	26.1	26.0	25.9	25.6	25.3	25.2	25.1

University of Wisconsin--Milwaukee

**Fall 2005 Student Profiles**

Undergraduate Students

Degree Candidates

	Students	% Targeted		Average Age	Average Credits
		% Women	Populations		
Academic Opportunity Center	1,230	51%	47%	20.8	10.6
College of Health Sciences	1,267	73%	10%	21.7	13.4
College of Letters and Science	7,323	55%	12%	21.9	12.8
College of Nursing	1,278	89%	13%	23.9	12.2
Engineering & Applied Science	1,485	8%	10%	22.7	12.5
Global Studies	66	65%	12%	20.2	13.5
Helen Bader School Soc Welfare	967	62%	17%	22.7	12.9
Peck School of the Arts	1,856	55%	9%	21.5	13.0
School Arch & Urban Planning	638	30%	7%	20.8	14.2
School Business Administration	3,629	40%	13%	21.8	12.9
School of Education	1,854	74%	14%	22.8	13.2
School of Information Studies	144	37%	24%	28.9	11.1
Total	21,737	53%	14%	22.1	12.7

Non-Degree Candidates

	Students	% Targeted		Average Age	Average Credits
		% Women	Populations		
College of Health Sciences	9	78%	11%	37.3	8.7
College of Letters and Science	19	79%	0%	21.0	10.3
College of Nursing	132	90%	20%	24.1	6.8
Engineering & Applied Science	5	20%	0%	29.6	11.8
Helen Bader School Soc Welfare	1	100%	0%	22.0	12.0
Peck School of the Arts	2	50%	0%	16.0	2.5
School Arch & Urban Planning	2	50%	0%	21.5	12.5
School Business Administration	6	83%	0%	21.3	13.0
School of Education	210	70%	16%	32.9	9.3
University Special Students	1,266	56%	10%	40.3	5.1
Total	1,652	61%	11%	37.6	5.9

**Fall 2005 Student Profiles**

Graduate Students

Degree Candidates

	Students	% Targeted		Average Age	Average Credits
		% Women	Populations		
College of Health Sciences	125	79%	6%	27.1	8.7
College of Letters and Science	1,217	53%	8%	30.6	6.5
College of Nursing	230	93%	7%	38.3	6.2
Engineering & Applied Science	275	24%	6%	30.9	5.5
Graduate School	61	52%	11%	30.4	7.7
Helen Bader School Soc Welfare	281	88%	14%	29.5	8.7
Peck School of the Arts	97	54%	7%	28.8	8.4
School Arch & Urban Planning	173	42%	9%	27.9	9.8
School Business Administration	640	43%	6%	30.5	6.7
School of Education	644	78%	21%	33.2	6.2
School of Information Studies	393	79%	3%	35.5	5.6
Total	4,136	61%	10%	31.6	6.7

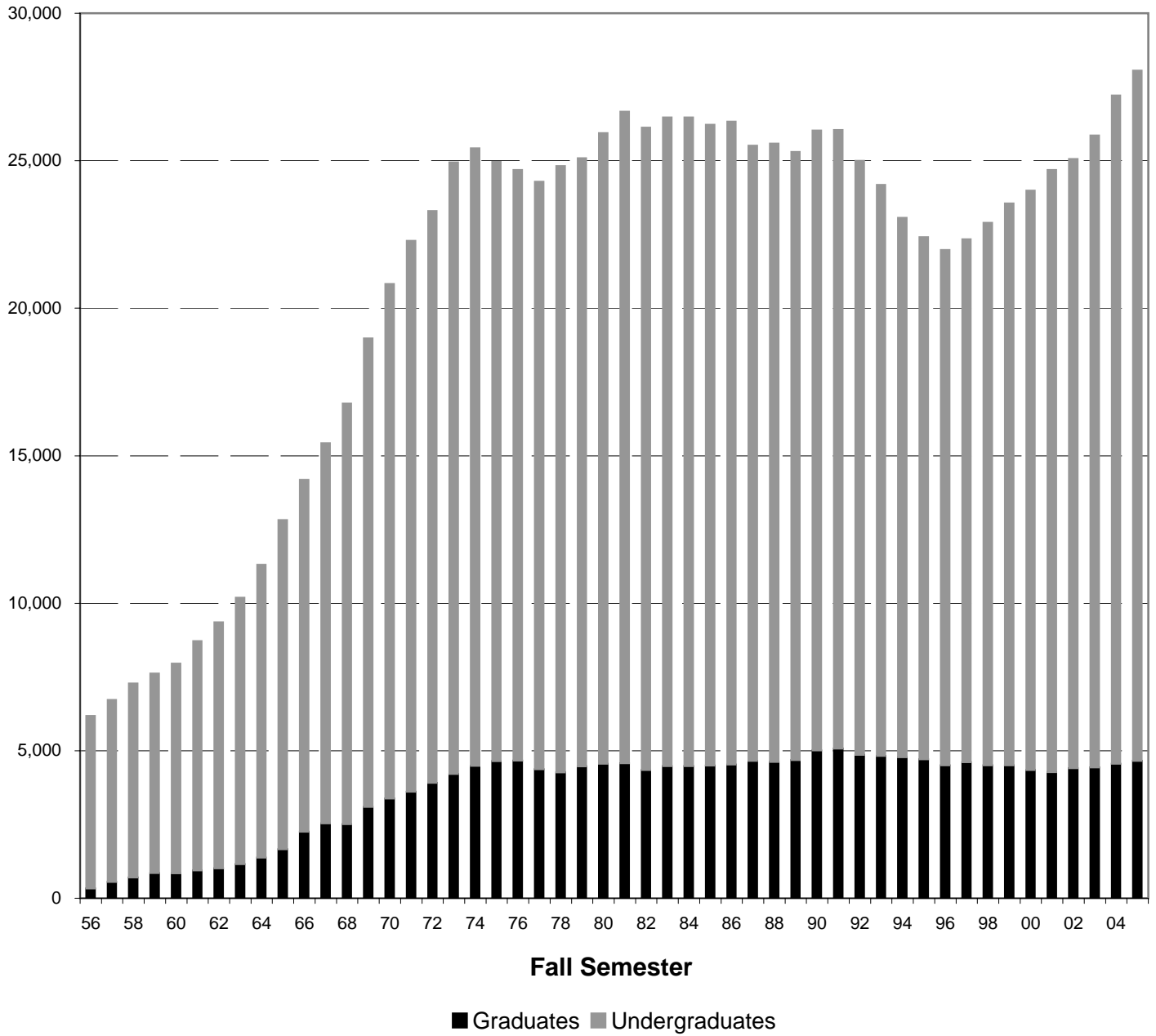
Non-Degree Candidates

	Students	% Targeted		Average Age	Average Credits
		% Women	Populations		
College of Health Sciences	1	100%	100%	27.0	5.0
College of Letters and Science	103	51%	16%	33.2	4.4
College of Nursing	16	88%	6%	34.4	3.3
Engineering & Applied Science	32	25%	9%	34.8	4.3
Helen Bader School Soc Welfare	27	93%	37%	29.7	4.5
Peck School of the Arts	5	80%	0%	30.2	5.4
School Arch & Urban Planning	20	40%	5%	31.1	5.1
School Business Administration	130	53%	11%	33.8	4.5
School of Education	130	68%	23%	38.8	4.6
School of Information Studies	35	80%	3%	37.7	4.0
University Special Students	22	73%	14%	35.9	3.1
Total	521	60%	15%	35.0	4.4

Fall Enrollment By Year Level

Fall	New Freshmen	Other Freshmen	Total Freshmen	Soph-omores	Juniors	Seniors	Specials	Non-Grads	Masters	Educ Spclst	Doctors	NDCs	Grads	Total
1956								5,847					330	6,177
1957			2,245	1,579	852	665	826	6,167					548	6,715
1958			2,618	1,469	893	871	725	6,576					702	7,278
1959			2,644	1,703	801	910	710	6,768					848	7,616
1960	1,915	897	2,812	1,697	956	850	789	7,104					842	7,946
1961	1,961	1,084	3,045	2,000	1,007	942	783	7,777					936	8,713
1962	1,871	1,079	2,950	2,185	1,194	1,023	994	8,346					1,008	9,354
1963	2,053	1,144	3,197	2,239	1,379	1,113	1,101	9,029					1,150	10,179
1964	2,280	1,191	3,471	2,376	1,549	1,305	1,228	9,929					1,373	11,302
1965	2,715	1,466	4,181	2,635	1,678	1,322	1,343	11,159					1,659	12,818
1966	2,439	1,289	3,728	3,269	1,819	1,592	1,521	11,929					2,247	14,176
1967	2,481	1,402	3,883	3,479	2,229	1,693	1,598	12,882					2,537	15,419
1968	2,720	1,528	4,248	3,728	2,563	2,085	1,634	14,258					2,510	16,768
1969	2,914	1,590	4,504	4,185	3,103	2,543	1,547	15,882					3,096	18,978
1970	2,979	1,953	4,932	4,657	3,538	2,825	1,490	17,442	3,094		154	132	3,380	20,822
1971	3,118	1,786	4,904	5,287	4,212	3,021	1,244	18,668	3,233		176	200	3,609	22,277
1972	3,042	1,908	4,950	5,092	4,468	3,522	1,349	19,381	3,426		233	253	3,912	23,293
1973	3,575	2,233	5,808	5,276	4,318	3,995	1,339	20,736	3,626		247	334	4,207	24,943
1974	3,265	2,568	5,833	5,253	4,414	3,919	1,515	20,934	3,774		237	476	4,487	25,421
1975	3,173	2,240	5,413	5,048	4,409	4,045	1,398	20,313	3,841		213	594	4,648	24,961
1976	2,891	2,231	5,122	4,980	4,410	4,201	1,313	20,026	3,751		235	674	4,660	24,686
1977	2,643	2,182	4,825	4,780	4,287	4,362	1,655	19,909	3,420		266	686	4,372	24,281
1978	3,118	2,072	5,190	4,646	4,067	4,422	2,231	20,556	3,285		313	664	4,262	24,818
1979	2,834	2,283	5,117	4,608	3,884	4,400	2,601	20,610	3,247		373	848	4,468	25,078
1980	2,845	2,418	5,263	4,825	3,964	4,296	3,030	21,378	3,395		396	764	4,555	25,933
1981	2,806	2,394	5,200	5,073	4,217	4,387	3,216	22,093	3,470		417	683	4,570	26,663
1982	2,683	2,133	4,816	5,020	4,321	4,817	2,807	21,781	3,371		458	512	4,341	26,122
1983	2,846	2,476	5,322	5,069	4,439	4,652	2,513	21,995	3,413		531	529	4,473	26,468
1984	2,864	2,269	5,133	5,093	4,352	5,043	2,368	21,989	3,321		556	598	4,475	26,464
1985	2,747	2,252	4,999	5,141	4,312	5,032	2,237	21,721	3,311		589	592	4,492	26,213
1986	2,679	2,214	4,893	5,109	4,475	5,196	2,120	21,793	3,296		617	619	4,532	26,325
1987	2,392	2,000	4,392	5,013	4,482	5,215	1,754	20,856	3,404		664	585	4,653	25,509
1988	2,649	2,106	4,755	4,865	4,227	5,303	1,808	20,958	3,288		718	610	4,616	25,574
1989	2,466	2,121	4,587	5,332	3,848	5,106	1,742	20,615	3,314		743	625	4,682	25,297
1990	2,449	2,150	4,599	5,705	3,715	5,007	1,987	21,013	3,422		764	821	5,007	26,020
1991	2,157	2,040	4,197	5,845	3,745	5,055	2,131	20,973	3,549		761	756	5,066	26,039
1992	1,882	1,737	3,619	5,601	3,382	5,292	2,239	20,133	3,503		760	594	4,857	24,990
1993	1,930	1,572	3,502	5,151	3,088	5,337	2,282	19,360	3,417		782	620	4,819	24,179
1994	1,806	1,396	3,202	4,484	3,040	5,378	2,180	18,284	3,395		799	583	4,777	23,061
1995	1,988	1,249	3,237	4,123	2,853	5,371	2,116	17,700	3,353		792	563	4,708	22,408
1996	2,253	1,454	3,707	4,049	2,718	4,826	2,163	17,463	3,166		779	561	4,506	21,969
1997	2,479	1,434	3,913	4,327	2,794	4,756	1,931	17,721	3,235		779	597	4,611	22,332
1998	2,700	1,581	4,281	4,474	2,894	4,804	1,942	18,395	3,145		722	633	4,500	22,895
1999	2,938	1,704	4,642	4,631	3,165	4,791	1,819	19,048	3,009		709	780	4,498	23,546
2000	2,980	1,557	4,537	5,145	3,286	4,967	1,701	19,636	2,997		699	649	4,345	23,981
2001	3,024	1,610	4,634	5,280	3,569	5,043	1,888	20,414	2,951		696	625	4,272	24,686
2002	3,269	1,683	4,952	4,698	4,090	5,246	1,671	20,657	3,068	3	700	631	4,402	25,059
2003	3,763	1,617	5,380	4,845	4,089	5,542	1,560	21,416	3,105	8	776	545	4,434	25,850
2004	3,772	1,739	5,511	5,240	4,283	5,946	1,674	22,654	3,114	10	898	532	4,554	27,208
2005	4,300	1,775	6,075	5,270	4,433	5,960	1,651	23,389	3,178	14	944	521	4,657	28,046

### Fall Enrollment By Undergraduate/Graduate



**Enrollment By Academic Group & Gender**

		Fall 1996	Fall 1997	Fall 1998	Fall 1999	Fall 2000	Fall 2001	Fall 2002	Fall 2003	Fall 2004	Fall 2005
Acad Opportunity Ctr	Men	461	474	505	535	577	589	575	581	560	600
	Women	581	561	603	688	731	742	716	668	587	630
	Total	1,042	1,035	1,108	1,223	1,308	1,331	1,291	1,249	1,147	1,230
Architecture	Men	535	572	541	558	529	559	536	550	578	560
	Women	221	242	242	280	288	288	255	274	292	273
	Total	756	814	783	838	817	847	791	824	870	833
Arts	Men	556	583	622	674	712	726	724	793	840	888
	Women	634	727	783	841	870	911	956	982	1,025	1,072
	Total	1,190	1,310	1,405	1,515	1,582	1,637	1,680	1,775	1,865	1,960
Business	Men	1,875	2,022	2,183	2,252	2,324	2,390	2,308	2,299	2,393	2,612
	Women	1,462	1,611	1,703	1,746	1,742	1,787	1,723	1,683	1,728	1,793
	Total	3,337	3,633	3,886	3,998	4,066	4,177	4,031	3,982	4,121	4,405
Education	Men	725	725	688	728	670	680	726	734	750	737
	Women	1,968	2,030	2,014	2,120	2,122	2,220	2,148	2,218	2,056	2,101
	Total	2,693	2,755	2,702	2,848	2,792	2,900	2,874	2,952	2,806	2,838
Engineering	Men	1,327	1,378	1,475	1,478	1,622	1,658	1,657	1,624	1,656	1,606
	Women	218	243	265	305	303	282	273	251	224	191
	Total	1,545	1,621	1,740	1,783	1,925	1,940	1,930	1,875	1,880	1,797
Health Science	Men	261	245	239	232	210	199	230	268	314	371
	Women	844	824	792	771	718	655	721	840	955	1,031
	Total	1,105	1,069	1,031	1,003	928	854	951	1,108	1,269	1,402
Information Studies	Men	57	62	64	77	111	149	152	142	170	180
	Women	219	237	254	232	289	330	335	311	320	392
	Total	276	299	318	309	400	479	487	453	490	572
Letters & Science	Men	2,872	2,785	2,832	2,861	2,866	2,924	2,994	3,337	3,744	3,937
	Women	3,139	3,314	3,381	3,587	3,779	4,030	4,079	4,365	4,704	4,725
	Total	6,011	6,099	6,213	6,448	6,645	6,954	7,073	7,702	8,448	8,662
Nursing	Men	127	120	108	94	81	83	106	156	203	171
	Women	856	843	842	858	902	935	1,161	1,437	1,551	1,485
	Total	983	963	950	952	983	1,018	1,267	1,593	1,754	1,656
Social Welfare	Men	421	355	358	331	344	289	305	310	358	403
	Women	869	881	890	871	814	750	765	773	809	873
	Total	1,290	1,236	1,248	1,202	1,158	1,039	1,070	1,083	1,167	1,276
Special Programs	Men	657	630	616	592	532	579	675	549	623	611
	Women	1,084	868	895	835	845	931	939	705	768	804
	Total	1,741	1,498	1,511	1,427	1,377	1,510	1,614	1,254	1,391	1,415
Total	Men	9,874	9,951	10,231	10,412	10,578	10,825	10,988	11,343	12,189	12,676
	Women	12,095	12,381	12,664	13,134	13,403	13,861	14,071	14,507	15,019	15,370
	Total	21,969	22,332	22,895	23,546	23,981	24,686	25,059	25,850	27,208	28,046

University of Wisconsin--Milwaukee

**Enrollment By Year Level & Ethnicity**

		Fall 1996	Fall 1997	Fall 1998	Fall 1999	Fall 2000	Fall 2001	Fall 2002	Fall 2003	Fall 2004	Fall 2005
UGRD New Freshmen	African Amer	233	258	265	249	275	273	275	241	261	288
	Amer Indian	20	19	29	20	34	17	16	31	31	38
	Asian	40	60	60	53	63	67	56	82	69	79
	International	21	17	16	17	17	18	15	9	8	10
	Latino/a	88	105	123	125	122	147	111	149	130	167
	SE Asian	45	43	73	76	78	91	111	83	124	141
	White	1,806	1,977	2,134	2,398	2,391	2,411	2,646	3,124	3,076	3,515
	Unknown	0	0	0	0	0	0	39	44	73	62
	Total	2,253	2,479	2,700	2,938	2,980	3,024	3,269	3,763	3,772	4,300
Other Freshmen	African Amer	273	282	315	291	280	346	313	296	305	290
	Amer Indian	19	17	23	20	16	18	17	15	24	22
	Asian	27	42	44	42	28	35	37	35	40	27
	International	18	14	12	18	17	16	13	11	8	13
	Latino/a	79	76	79	104	90	86	92	89	92	103
	SE Asian	36	29	36	46	50	62	67	90	55	64
	White	1,002	974	1,072	1,183	1,076	1,047	1,118	1,057	1,183	1,233
	Unknown	0	0	0	0	0	0	26	24	32	23
	Total	1,454	1,434	1,581	1,704	1,557	1,610	1,683	1,617	1,739	1,775
Soph- omores	African Amer	360	387	390	439	427	441	382	352	328	334
	Amer Indian	40	35	35	37	46	57	42	31	30	45
	Asian	99	92	93	98	106	107	97	97	110	124
	International	92	97	88	67	71	72	39	18	18	19
	Latino/a	166	164	183	192	218	214	192	164	188	196
	SE Asian	63	76	82	91	95	108	101	132	139	114
	White	3,229	3,476	3,603	3,707	4,182	4,281	3,818	3,988	4,365	4,357
	Unknown	0	0	0	0	0	0	27	63	62	81
	Total	4,049	4,327	4,474	4,631	5,145	5,280	4,698	4,845	5,240	5,270
Juniors	African Amer	207	196	209	221	233	233	246	262	263	262
	Amer Indian	19	20	18	25	29	26	32	31	28	25
	Asian	55	60	61	54	66	77	80	75	92	90
	International	46	41	28	31	29	28	43	28	33	24
	Latino/a	90	101	80	97	114	122	151	172	164	158
	SE Asian	36	29	39	62	50	46	83	68	95	89
	White	2,265	2,347	2,459	2,675	2,765	3,037	3,427	3,421	3,545	3,712
	Unknown	0	0	0	0	0	0	28	32	63	73
	Total	2,718	2,794	2,894	3,165	3,286	3,569	4,090	4,089	4,283	4,433
Seniors	African Amer	322	325	326	319	344	352	372	323	346	325
	Amer Indian	45	40	52	35	38	36	41	41	43	46
	Asian	109	102	116	106	109	113	114	130	127	131
	International	88	94	93	72	76	73	61	57	51	50
	Latino/a	171	157	147	170	174	186	202	194	218	214
	SE Asian	47	63	71	78	99	88	93	106	113	119
	White	4,044	3,975	3,999	4,011	4,127	4,195	4,340	4,645	4,992	4,995
	Unknown	0	0	0	0	0	0	23	46	56	80
	Total	4,826	4,756	4,804	4,791	4,967	5,043	5,246	5,542	5,946	5,960
Non	African Amer	179	160	147	146	130	157	110	92	124	121

### Enrollment By Year Level & Ethnicity

		Fall 1996	Fall 1997	Fall 1998	Fall 1999	Fall 2000	Fall 2001	Fall 2002	Fall 2003	Fall 2004	Fall 2005
Degree	Amer Indian	10	5	8	6	0	11	6	15	12	8
	Asian	46	52	42	48	40	39	26	27	40	40
	International	49	53	49	42	47	35	30	40	38	43
	Latino/a	77	70	80	78	70	77	77	62	57	44
	SE Asian	9	6	8	9	10	12	8	12	17	8
	White	1,793	1,585	1,608	1,490	1,404	1,557	1,255	1,148	1,287	1,338
	Unknown	0	0	0	0	0	0	159	164	99	49
	<b>Total</b>	<b>2,163</b>	<b>1,931</b>	<b>1,942</b>	<b>1,819</b>	<b>1,701</b>	<b>1,888</b>	<b>1,671</b>	<b>1,560</b>	<b>1,674</b>	<b>1,651</b>
Total	African Amer	1,574	1,608	1,652	1,665	1,689	1,802	1,698	1,566	1,627	1,620
	Amer Indian	153	136	165	143	163	165	154	164	168	184
	Asian	376	408	416	401	412	438	410	446	478	491
	International	314	316	286	247	257	242	201	163	156	159
	Latino/a	671	673	692	766	788	832	825	830	849	882
	SE Asian	236	246	309	362	382	407	463	491	543	535
	White	14,139	14,334	14,875	15,464	15,945	16,528	16,604	17,383	18,448	19,150
	Unknown	0	0	0	0	0	0	302	373	385	368
<b>Total</b>	<b>17,463</b>	<b>17,721</b>	<b>18,395</b>	<b>19,048</b>	<b>19,636</b>	<b>20,414</b>	<b>20,657</b>	<b>21,416</b>	<b>22,654</b>	<b>23,389</b>	
GRAD Masters	African Amer	115	146	158	143	136	168	162	163	144	163
	Amer Indian	15	15	17	17	31	21	15	19	20	25
	Asian	62	62	70	62	47	59	55	50	57	57
	International	209	223	229	242	232	224	242	250	255	242
	Latino/a	60	72	77	81	86	67	75	83	94	88
	SE Asian	19	20	16	10	15	22	34	33	29	22
	White	2,686	2,697	2,578	2,454	2,450	2,390	2,415	2,405	2,389	2,463
	Unknown	0	0	0	0	0	0	70	102	126	118
<b>Total</b>	<b>3,166</b>	<b>3,235</b>	<b>3,145</b>	<b>3,009</b>	<b>2,997</b>	<b>2,951</b>	<b>3,068</b>	<b>3,105</b>	<b>3,114</b>	<b>3,178</b>	
Educ Specialist	African Amer							0	0	0	1
	Amer Indian							0	0	0	0
	Asian							0	0	0	0
	International							0	0	0	0
	Latino/a							0	0	0	0
	SE Asian							0	0	0	0
	White							3	8	10	13
	Unknown							0	0	0	0
<b>Total</b>							<b>3</b>	<b>8</b>	<b>10</b>	<b>14</b>	
Doctors	African Amer	36	47	48	51	51	54	56	51	57	58
	Amer Indian	3	4	3	2	2	1	2	6	7	8
	Asian	17	19	19	16	13	15	14	17	24	24
	International	169	194	184	189	186	191	203	240	269	285
	Latino/a	19	19	17	16	18	16	13	16	17	23
	SE Asian	3	3	6	9	8	5	5	7	10	8
	White	532	493	445	426	421	414	404	429	495	518
	Unknown	0	0	0	0	0	0	3	10	19	20
<b>Total</b>	<b>779</b>	<b>779</b>	<b>722</b>	<b>709</b>	<b>699</b>	<b>696</b>	<b>700</b>	<b>776</b>	<b>898</b>	<b>944</b>	
Non Degree	African Amer	51	58	77	97	67	56	75	59	55	47
	Amer Indian	2	3	4	11	1	5	6	4	1	2

**Enrollment By Year Level & Ethnicity**

		Fall 1996	Fall 1997	Fall 1998	Fall 1999	Fall 2000	Fall 2001	Fall 2002	Fall 2003	Fall 2004	Fall 2005
	Asian	5	7	11	8	10	9	9	14	12	16
	International	12	15	16	16	9	18	13	18	19	25
	Latino/a	11	16	17	18	24	20	28	22	28	31
	SE Asian	3	3	0	6	11	4	8	3	7	0
	White	477	495	508	624	527	513	472	414	393	392
	Unknown	0	0	0	0	0	0	20	11	17	8
	<b>Total</b>	<b>561</b>	<b>597</b>	<b>633</b>	<b>780</b>	<b>649</b>	<b>625</b>	<b>631</b>	<b>545</b>	<b>532</b>	<b>521</b>
<b>Total</b>	African Amer	202	251	283	291	254	278	293	273	256	269
	Amer Indian	20	22	24	30	34	27	23	29	28	35
	Asian	84	88	100	86	70	83	78	81	93	97
	International	390	432	429	447	427	433	458	508	543	552
	Latino/a	90	107	111	115	128	103	116	121	139	142
	SE Asian	25	26	22	25	34	31	47	43	46	30
	White	3,695	3,685	3,531	3,504	3,398	3,317	3,294	3,256	3,287	3,386
	Unknown	0	0	0	0	0	0	93	123	162	146
	<b>Total</b>	<b>4,506</b>	<b>4,611</b>	<b>4,500</b>	<b>4,498</b>	<b>4,345</b>	<b>4,272</b>	<b>4,402</b>	<b>4,434</b>	<b>4,554</b>	<b>4,657</b>
<b>Total</b>	African Amer	1,776	1,859	1,935	1,956	1,943	2,080	1,991	1,839	1,883	1,889
	Amer Indian	173	158	189	173	197	192	177	193	196	219
	Asian	460	496	516	487	482	521	488	527	571	588
	International	704	748	715	694	684	675	659	671	699	711
	Latino/a	761	780	803	881	916	935	941	951	988	1,024
	SE Asian	261	272	331	387	416	438	510	534	589	565
	White	17,834	18,019	18,406	18,968	19,343	19,845	19,898	20,639	21,735	22,536
	Unknown	0	0	0	0	0	0	395	496	547	514
	<b>Total</b>	<b>21,969</b>	<b>22,332</b>	<b>22,895</b>	<b>23,546</b>	<b>23,981</b>	<b>24,686</b>	<b>25,059</b>	<b>25,850</b>	<b>27,208</b>	<b>28,046</b>

**Enrollment By Academic Group & Ethnicity**

		Fall 1996	Fall 1997	Fall 1998	Fall 1999	Fall 2000	Fall 2001	Fall 2002	Fall 2003	Fall 2004	Fall 2005
Acad Opportunity Ctr	African Amer	443	450	454	463	489	538	527	490	417	361
	Amer Indian	25	26	31	33	39	27	27	32	33	33
	Asian	31	26	31	27	27	34	31	31	27	27
	International	1	2	2	1	2	0	1	1	0	2
	Latino/a	113	101	106	125	152	159	163	149	121	112
	SE Asian	39	48	37	48	62	74	87	86	91	71
	White	390	382	447	526	537	499	451	449	446	616
	Unknown	0	0	0	0	0	0	4	11	12	8
	Total	1,042	1,035	1,108	1,223	1,308	1,331	1,291	1,249	1,147	1,230
Architecture	African Amer	8	14	12	16	10	12	5	5	7	11
	Amer Indian	3	5	7	5	4	3	3	3	1	4
	Asian	11	18	16	17	13	12	12	7	12	14
	International	38	37	34	41	44	46	36	35	31	22
	Latino/a	23	30	31	37	37	39	38	45	51	41
	SE Asian	5	8	7	6	3	6	5	4	5	7
	White	668	702	676	716	706	729	687	717	749	719
	Unknown	0	0	0	0	0	0	5	8	14	15
	Total	756	814	783	838	817	847	791	824	870	833
Arts	African Amer	43	45	46	50	47	48	53	47	56	69
	Amer Indian	14	12	11	11	11	11	7	11	12	17
	Asian	17	25	32	25	25	19	25	28	32	30
	International	29	21	27	26	24	24	28	20	19	19
	Latino/a	32	32	42	59	58	55	50	64	66	69
	SE Asian	7	5	5	7	10	12	13	18	21	24
	White	1,048	1,170	1,242	1,337	1,407	1,468	1,481	1,559	1,622	1,689
	Unknown	0	0	0	0	0	0	23	28	37	43
	Total	1,190	1,310	1,405	1,515	1,582	1,637	1,680	1,775	1,865	1,960
Business	African Amer	189	188	236	231	215	226	226	204	222	231
	Amer Indian	17	12	25	23	25	20	18	17	16	22
	Asian	99	100	135	112	125	138	109	106	90	115
	International	212	218	203	170	149	147	117	114	113	149
	Latino/a	69	79	103	101	86	102	104	98	108	133
	SE Asian	41	48	66	80	89	99	106	106	114	122
	White	2,710	2,988	3,118	3,281	3,377	3,445	3,313	3,288	3,399	3,565
	Unknown	0	0	0	0	0	0	38	49	59	68
	Total	3,337	3,633	3,886	3,998	4,066	4,177	4,031	3,982	4,121	4,405
Education	African Amer	288	353	347	372	317	338	266	271	256	274
	Amer Indian	19	23	24	23	27	35	25	39	35	38
	Asian	31	35	32	34	27	33	34	34	36	34
	International	7	8	12	7	8	10	9	13	12	17
	Latino/a	141	132	115	145	136	127	131	124	131	113
	SE Asian	20	20	21	24	31	29	43	29	39	29
	White	2,187	2,184	2,151	2,243	2,246	2,328	2,345	2,411	2,253	2,297
	Unknown	0	0	0	0	0	0	21	31	44	36
	Total	2,693	2,755	2,702	2,848	2,792	2,900	2,874	2,952	2,806	2,838
Engineering	African Amer	79	86	96	87	106	97	82	67	69	60

**Enrollment By Academic Group & Ethnicity**

		Fall 1996	Fall 1997	Fall 1998	Fall 1999	Fall 2000	Fall 2001	Fall 2002	Fall 2003	Fall 2004	Fall 2005
	Amer Indian	8	6	8	4	5	6	5	4	6	4
	Asian	54	61	61	64	55	62	59	63	74	64
	International	130	144	155	163	189	200	187	184	180	161
	Latino/a	36	41	45	51	51	54	48	52	55	57
	SE Asian	42	35	54	72	76	66	74	72	64	50
	White	1,196	1,248	1,321	1,342	1,443	1,455	1,450	1,400	1,403	1,373
	Unknown	0	0	0	0	0	0	25	33	29	28
	<b>Total</b>	<b>1,545</b>	<b>1,621</b>	<b>1,740</b>	<b>1,783</b>	<b>1,925</b>	<b>1,940</b>	<b>1,930</b>	<b>1,875</b>	<b>1,880</b>	<b>1,797</b>
Health Science	African Amer	52	45	39	50	49	55	59	54	70	68
	Amer Indian	8	5	4	3	3	3	5	7	6	6
	Asian	28	31	22	22	20	16	20	22	24	31
	International	8	11	9	8	11	12	14	15	17	18
	Latino/a	22	21	24	22	22	21	31	36	33	41
	SE Asian	7	7	15	13	14	9	11	18	18	25
	White	980	949	918	885	809	738	802	944	1,087	1,197
	Unknown	0	0	0	0	0	0	9	12	14	16
	<b>Total</b>	<b>1,105</b>	<b>1,069</b>	<b>1,031</b>	<b>1,003</b>	<b>928</b>	<b>854</b>	<b>951</b>	<b>1,108</b>	<b>1,269</b>	<b>1,402</b>
Information Studies	African Amer	7	9	15	18	20	24	33	30	26	22
	Amer Indian	1	0	0	3	4	5	4	2	1	2
	Asian	3	1	2	2	8	11	13	8	15	9
	International	6	15	2	7	5	8	7	7	6	9
	Latino/a	3	5	5	3	11	13	9	12	12	13
	SE Asian	0	0	2	5	6	8	10	10	16	12
	White	256	269	292	271	346	410	392	365	377	466
	Unknown	0	0	0	0	0	0	19	19	37	39
	<b>Total</b>	<b>276</b>	<b>299</b>	<b>318</b>	<b>309</b>	<b>400</b>	<b>479</b>	<b>487</b>	<b>453</b>	<b>490</b>	<b>572</b>
Letters & Science	African Amer	339	379	380	369	379	425	425	396	453	473
	Amer Indian	52	44	52	40	59	55	55	49	64	66
	Asian	115	124	126	114	118	139	132	166	176	181
	International	245	270	244	248	230	212	179	265	296	278
	Latino/a	203	224	199	205	229	231	224	240	269	290
	SE Asian	72	74	91	104	98	109	117	139	149	159
	White	4,985	4,984	5,121	5,368	5,532	5,783	5,869	6,340	6,887	7,054
	Unknown	0	0	0	0	0	0	72	107	154	161
	<b>Total</b>	<b>6,011</b>	<b>6,099</b>	<b>6,213</b>	<b>6,448</b>	<b>6,645</b>	<b>6,954</b>	<b>7,073</b>	<b>7,702</b>	<b>8,448</b>	<b>8,662</b>
Nursing	African Amer	53	58	57	63	73	71	82	100	100	109
	Amer Indian	5	8	7	9	8	9	9	10	7	6
	Asian	25	21	13	19	22	14	24	32	40	35
	International	9	5	3	6	6	7	5	8	12	17
	Latino/a	32	33	33	37	35	32	38	45	52	50
	SE Asian	10	12	12	14	14	12	20	31	43	45
	White	849	826	825	804	825	873	1,072	1,327	1,464	1,363
	Unknown	0	0	0	0	0	0	17	40	36	31
	<b>Total</b>	<b>983</b>	<b>963</b>	<b>950</b>	<b>952</b>	<b>983</b>	<b>1,018</b>	<b>1,267</b>	<b>1,593</b>	<b>1,754</b>	<b>1,656</b>
Social Welfare	African Amer	127	115	144	133	135	133	137	119	122	124
	Amer Indian	12	12	13	14	12	9	13	15	12	15

**Enrollment By Academic Group & Ethnicity**

		Fall 1996	Fall 1997	Fall 1998	Fall 1999	Fall 2000	Fall 2001	Fall 2002	Fall 2003	Fall 2004	Fall 2005
	Asian	9	12	15	15	10	11	7	9	11	13
	International	2	3	6	2	2	1	3	0	1	5
	Latino/a	45	47	48	52	49	43	42	43	48	67
	SE Asian	10	10	14	6	6	5	12	11	13	13
	White	1,085	1,037	1,008	980	944	837	840	869	938	1,012
	Unknown	0	0	0	0	0	0	16	17	22	27
	<b>Total</b>	<b>1,290</b>	<b>1,236</b>	<b>1,248</b>	<b>1,202</b>	<b>1,158</b>	<b>1,039</b>	<b>1,070</b>	<b>1,083</b>	<b>1,167</b>	<b>1,276</b>
Special Programs	African Amer	148	117	109	104	103	113	96	56	85	87
	Amer Indian	9	5	7	5	0	9	6	4	3	6
	Asian	37	42	31	36	32	32	22	21	34	35
	International	17	14	18	15	14	8	73	9	12	14
	Latino/a	42	35	52	44	50	59	63	43	42	38
	SE Asian	8	5	7	8	7	9	12	10	16	8
	White	1,480	1,280	1,287	1,215	1,171	1,280	1,196	970	1,110	1,185
	Unknown	0	0	0	0	0	0	146	141	89	42
	<b>Total</b>	<b>1,741</b>	<b>1,498</b>	<b>1,511</b>	<b>1,427</b>	<b>1,377</b>	<b>1,510</b>	<b>1,614</b>	<b>1,254</b>	<b>1,391</b>	<b>1,415</b>
Total	African Amer	1,776	1,859	1,935	1,956	1,943	2,080	1,991	1,839	1,883	1,889
	Amer Indian	173	158	189	173	197	192	177	193	196	219
	Asian	460	496	516	487	482	521	488	527	571	588
	International	704	748	715	694	684	675	659	671	699	711
	Latino/a	761	780	803	881	916	935	941	951	988	1,024
	SE Asian	261	272	331	387	416	438	510	534	589	565
	White	17,834	18,019	18,406	18,968	19,343	19,845	19,898	20,639	21,735	22,536
	Unknown	0	0	0	0	0	0	395	496	547	514
	<b>Total</b>	<b>21,969</b>	<b>22,332</b>	<b>22,895</b>	<b>23,546</b>	<b>23,981</b>	<b>24,686</b>	<b>25,059</b>	<b>25,850</b>	<b>27,208</b>	<b>28,046</b>

**Fall 2005 Enrollment By Academic Group & Year Level**

	UGRD						GRAD						
	New Freshmen	Other Freshmen	Soph-omores	Juniors	Seniors	Non Degree	Total	Masters	Doctors	Non Degree	Educ Specialist	Total	Total
AOC	506	368	263	78	15		1,230						1,230
ARTS	373	121	490	360	512	2	1,858	97		5		102	1,960
BUS	607	216	854	877	1,075	6	3,635	592	48	130		770	4,405
CEAS	255	118	339	268	505	5	1,490	167	108	32		307	1,797
CHS	191	77	354	238	407	9	1,276	119	6	1		126	1,402
EDUC	252	92	452	374	684	210	2,064	464	166	130	14	774	2,838
L&S	1,560	572	1,820	1,569	1,802	19	7,342	704	513	103		1,320	8,662
NURS	216	124	224	248	467	131	1,410	144	86	16		246	1,656
SARUP	172	15	174	125	152	2	640	156	17	20		193	833
SOIS	5	5	18	53	63		144	393		35		428	572
SPPM	21	4	18	11	12	1,266	1,332	61		22		83	1,415
SW	142	63	264	232	266	1	968	281		27		308	1,276
<b>Total</b>	<b>4,300</b>	<b>1,775</b>	<b>5,270</b>	<b>4,433</b>	<b>5,960</b>	<b>1,651</b>	<b>23,389</b>	<b>3,178</b>	<b>944</b>	<b>521</b>	<b>14</b>	<b>4,657</b>	<b>28,046</b>

**Enrollment of Evening/Weekend Students by Gender**

		<u>Fall 2002</u>	<u>Fall 2003</u>	<u>Fall 2004</u>	<u>Fall 2005</u>
Women	Evening/Weekend Students	1,939	1,714	1,693	1,535
	Total Students	14,099	14,514	15,023	15,372
	% Evening/Weekend	13.8%	11.8%	11.3%	10.0%
Men	Evening/Weekend Students	1,402	1,208	1,171	1,068
	Total Students	10,960	11,336	12,185	12,674
	% Evening/Weekend	12.8%	10.7%	9.6%	8.4%
Total	Evening/Weekend Students	3,341	2,922	2,864	2,603
	Total Students	25,059	25,850	27,208	28,046
	% Evening/Weekend	13.3%	11.3%	10.5%	9.3%

**Enrollment of Evening/Weekend Students by Ethnicity**

		<u>Fall 2002</u>	<u>Fall 2003</u>	<u>Fall 2004</u>	<u>Fall 2005</u>
Am. Indian	Evening/Weekend Students	17	11	10	17
	Total Students	177	193	196	219
	% Evening/Weekend	9.6%	5.7%	5.1%	7.8%
Asian	Evening/Weekend Students	50	68	62	61
	Total Students	488	527	571	588
	% Evening/Weekend	10.2%	12.9%	10.9%	10.4%
Black	Evening/Weekend Students	348	288	254	274
	Total Students	1,991	1,839	1,883	1,889
	% Evening/Weekend	17.5%	15.7%	13.5%	14.5%
Hispanic	Evening/Weekend Students	149	130	126	108
	Total Students	941	951	988	1,024
	% Evening/Weekend	15.8%	13.7%	12.8%	10.5%
Internationa	Evening/Weekend Students	96	72	83	64
	Total Students	659	671	699	711
	% Evening/Weekend	14.6%	10.7%	11.9%	9.0%
SE Asian	Evening/Weekend Students	47	28	35	28
	Total Students	510	534	589	565
	% Evening/Weekend	9.2%	5.2%	5.9%	5.0%
White	Evening/Weekend Students	2,538	2,248	2,224	2,009
	Total Students	19,898	20,639	21,735	22,536
	% Evening/Weekend	12.8%	10.9%	10.2%	8.9%
Unknown	Evening/Weekend Students	96	77	70	42
	Total Students	395	496	547	514
	% Evening/Weekend	24.3%	15.5%	12.8%	8.2%
Total	Evening/Weekend Students	3,341	2,922	2,864	2,603
	Total Students	25,059	25,850	27,208	28,046
	% Evening/Weekend	13.3%	11.3%	10.5%	9.3%

**Enrollment of Evening/Weekend Students by Year Level**

		<u>Fall 2002</u>	<u>Fall 2003</u>	<u>Fall 2004</u>	<u>Fall 2005</u>
New	Evening/Weekend Students	18	11	7	13
Freshman	Total Students	3,269	3,763	3,772	4,300
	% Evening/Weekend	0.6%	0.3%	0.2%	0.3%
Other	Evening/Weekend Students	90	72	68	60
Freshman	Total Students	1,683	1,617	1,739	1,775
	% Evening/Weekend	5.3%	4.5%	3.9%	3.4%
Sophomore	Evening/Weekend Students	196	147	137	132
	Total Students	4,698	4,845	5,240	5,270
	% Evening/Weekend	4.2%	3.0%	2.6%	2.5%
Junior	Evening/Weekend Students	260	214	181	158
	Total Students	4,090	4,089	4,283	4,433
	% Evening/Weekend	6.4%	5.2%	4.2%	3.6%
Senior	Evening/Weekend Students	505	417	423	384
	Total Students	5,246	5,542	5,946	5,960
	% Evening/Weekend	9.6%	7.5%	7.1%	6.4%
Special	Evening/Weekend Students	497	424	459	399
	Total Students	1,671	1,560	1,674	1,651
	% Evening/Weekend	29.7%	27.2%	27.4%	24.2%
Master	Evening/Weekend Students	1,255	1,188	1,152	1,072
	Total Students	3,068	3,105	3,114	3,178
	% Evening/Weekend	40.9%	38.3%	37.0%	33.7%
Doctoral	Evening/Weekend Students	101	113	102	83
	Total Students	700	776	898	944
	% Evening/Weekend	14.4%	14.6%	11.4%	8.8%
Non Degree	Evening/Weekend Students	418	336	334	302
	Total Students	631	545	532	521
	% Evening/Weekend	66.2%	61.7%	62.8%	58.0%
Specialist	Evening/Weekend Students	1		1	
	Total Students	3	8	10	14
	% Evening/Weekend	33.3%		10.0%	
Total	Evening/Weekend Students	3,341	2,922	2,864	2,603
	Total Students	25,059	25,850	27,208	28,046
	% Evening/Weekend	13.3%	11.3%	10.5%	9.3%

**Enrollment of Evening/Weekend Students by Academic Group**

		<u>Fall 2002</u>	<u>Fall 2003</u>	<u>Fall 2004</u>	<u>Fall 2005</u>
AOC	Evening/Weekend Students	76	59	37	43
	Total Students	1,291	1,249	1,147	1,230
	% Evening/Weekend	5.9%	4.7%	3.2%	3.5%
CEAS	Evening/Weekend Students	221	152	136	109
	Total Students	1,930	1,875	1,880	1,797
	% Evening/Weekend	11.5%	8.1%	7.2%	6.1%
CollegeNur	Evening/Weekend Students	71	83	90	101
	Total Students	1,267	1,593	1,754	1,656
	% Evening/Weekend	5.6%	5.2%	5.1%	6.1%
GlblStdInt	Evening/Weekend Students			2	1
	Total Students		2	48	66
	% Evening/Weekend			4.2%	1.5%
Grad Schl	Evening/Weekend Students	15	15	14	19
	Total Students	285	48	48	61
	% Evening/Weekend	5.3%	31.3%	29.2%	31.1%
Health Sci	Evening/Weekend Students	38	31	39	29
	Total Students	951	1,108	1,269	1,402
	% Evening/Weekend	4.0%	2.8%	3.1%	2.1%
L&S	Evening/Weekend Students	624	489	462	384
	Total Students	7,073	7,702	8,448	8,662
	% Evening/Weekend	8.8%	6.3%	5.5%	4.4%
LubarScBus	Evening/Weekend Students	893	845	863	798
	Total Students	4,031	3,982	4,121	4,405
	% Evening/Weekend	22.2%	21.2%	20.9%	18.1%
OARS	Evening/Weekend Students	349	305	340	303
	Total Students	1,046	982	1,085	1,091
	% Evening/Weekend	33.4%	31.1%	31.3%	27.8%
Off-Campus	Evening/Weekend Students	155	95	85	59
	Total Students	283	175	158	136
	% Evening/Weekend	54.8%	54.3%	53.8%	43.4%
PeckScArts	Evening/Weekend Students	32	17	26	16
	Total Students	1,680	1,775	1,865	1,960
	% Evening/Weekend	1.9%	1.0%	1.4%	0.8%
SARUP	Evening/Weekend Students	14	16	12	12
	Total Students	791	824	870	833
	% Evening/Weekend	1.8%	1.9%	1.4%	1.4%
Sch InfStd	Evening/Weekend Students	90	71	64	53
	Total Students	487	453	490	572
	% Evening/Weekend	18.5%	15.7%	13.1%	9.3%
Schl Educ	Evening/Weekend Students	631	610	582	538
	Total Students	2,874	2,952	2,806	2,838
	% Evening/Weekend	22.0%	20.7%	20.7%	19.0%
Schl SW	Evening/Weekend Students	132	120	98	122
	Total Students	1,070	1,083	1,167	1,276
	% Evening/Weekend	12.3%	11.1%	8.4%	9.6%
UWMil	Evening/Weekend Students		14	14	16
	Total Students		47	52	61
	% Evening/Weekend		29.8%	26.9%	26.2%

**Credits Conveyed in Evenings & on Weekends by Academic Group**

		<u>Fall 2002</u>	<u>Fall 2003</u>	<u>Fall 2004</u>	<u>Fall 2005</u>
CEAS	Evening/Weekend Credits	4,234	2,743	2,334	2,471
	Total Credits	13,379	12,539	12,209	12,012
	% Evening/Weekend	31.6%	21.9%	19.1%	20.6%
CollegeNur	Evening/Weekend Credits	955	1,422	1,654	1,672
	Total Credits	8,806	10,274	10,815	10,758
	% Evening/Weekend	10.8%	13.8%	15.3%	15.5%
Health Sci	Evening/Weekend Credits	2,154	2,285	2,343	1,946
	Total Credits	13,361	14,140	15,093	16,132
	% Evening/Weekend	16.1%	16.2%	15.5%	12.1%
L&S	Evening/Weekend Credits	24,868	22,147	23,837	27,050
	Total Credits	149,274	160,413	172,726	179,054
	% Evening/Weekend	16.7%	13.8%	13.8%	15.1%
LubarScBus	Evening/Weekend Credits	12,548	12,397	12,656	13,389
	Total Credits	30,095	29,702	31,435	32,829
	% Evening/Weekend	41.7%	41.7%	40.3%	40.8%
PeckScArts	Evening/Weekend Credits	2,928	2,750	3,313	3,607
	Total Credits	21,020	22,845	24,330	26,008
	% Evening/Weekend	13.9%	12.0%	13.6%	13.9%
SARUP	Evening/Weekend Credits	2,007	1,215	1,214	1,232
	Total Credits	7,182	7,455	7,644	7,492
	% Evening/Weekend	27.9%	16.3%	15.9%	16.4%
Sch InfStd	Evening/Weekend Credits	1,194	999	878	887
	Total Credits	3,502	3,467	3,421	3,740
	% Evening/Weekend	34.1%	28.8%	25.7%	23.7%
Schl Educ	Evening/Weekend Credits	9,616	9,547	8,567	8,533
	Total Credits	19,376	20,064	18,888	19,637
	% Evening/Weekend	49.6%	47.6%	45.4%	43.5%
Schl SW	Evening/Weekend Credits	3,075	3,090	3,911	3,704
	Total Credits	7,029	7,742	8,644	9,223
	% Evening/Weekend	43.7%	39.9%	45.2%	40.2%
Total	Evening/Weekend Credits	63,578	58,595	60,707	64,491
	Total Credits	273,024	288,641	305,205	316,885
	% Evening/Weekend	23.3%	20.3%	19.9%	20.4%

**Student Credit Hours By Year Level**

	Fall 1996	Fall 1997	Fall 1998	Fall 1999	Fall 2000	Fall 2001	Fall 2002	Fall 2003	Fall 2004	Fall 2005
UGRD New Freshman	26,973	29,740	32,611	36,314	36,702	36,991	40,666	47,378	47,655	54,203
Other Freshman	15,821	15,569	16,957	18,998	17,238	17,667	19,390	18,903	20,352	21,119
Sophomore	49,717	53,963	55,486	57,552	64,864	66,441	60,338	63,176	69,396	70,068
Junior	33,331	35,132	36,589	40,238	41,723	45,658	52,469	52,972	55,684	58,349
Senior	53,973	53,681	55,403	54,797	57,836	59,506	62,920	67,544	72,244	73,185
Special	11,125	10,660	10,298	9,868	9,033	10,007	9,347	9,257	9,910	9,794
Subtotal	190,940	198,745	207,344	217,767	227,396	236,270	245,130	259,230	275,241	286,718
GRAD Master	19,098	19,727	19,329	18,881	19,002	19,267	20,980	22,172	22,061	22,173
Doctoral	4,100	3,919	3,891	3,953	3,776	3,924	4,186	4,731	5,484	5,638
Non Degree	1,936	2,316	2,421	3,165	2,479	2,575	2,713	2,467	2,386	2,291
Specialist							15	41	33	65
Subtotal	25,134	25,962	25,641	25,999	25,257	25,766	27,894	29,411	29,964	30,167
<b>Total</b>	<b>216,074</b>	<b>224,707</b>	<b>232,985</b>	<b>243,766</b>	<b>252,653</b>	<b>262,036</b>	<b>273,024</b>	<b>288,641</b>	<b>305,205</b>	<b>316,885</b>

University of Wisconsin--Milwaukee

**FTE Enrollment By Year Level**

	Fall 1996	Fall 1997	Fall 1998	Fall 1999	Fall 2000	Fall 2001	Fall 2002	Fall 2003	Fall 2004	Fall 2005
UGRD New Freshman	1,798	1,983	2,174	2,421	2,447	2,466	2,711	3,159	3,177	3,614
Other Freshman	1,055	1,038	1,130	1,267	1,149	1,178	1,293	1,260	1,357	1,408
Sophomore	3,314	3,598	3,699	3,837	4,324	4,429	4,023	4,212	4,626	4,671
Junior	2,222	2,342	2,439	2,683	2,782	3,044	3,498	3,531	3,712	3,890
Senior	3,598	3,579	3,694	3,653	3,856	3,967	4,195	4,503	4,816	4,879
Special	742	711	687	658	602	667	623	617	661	653
Total	12,729	13,250	13,823	14,518	15,160	15,751	16,342	17,282	18,349	19,115
GRAD Master	1,591	1,644	1,611	1,573	1,584	1,606	1,748	1,848	1,838	1,848
Doctoral	586	560	556	565	539	561	598	676	783	805
Non Degree	161	193	202	264	207	215	226	206	199	191
Specialist							1	3	3	5
Total	2,339	2,397	2,368	2,402	2,330	2,381	2,574	2,733	2,823	2,850
Total	15,068	15,646	16,191	16,920	17,489	18,132	18,916	20,015	21,173	21,964

**Average Credit Load By Academic Group - Undergraduates**

		Fall	Fall	Fall	Fall	Fall	Fall	Fall	Fall	Fall	Fall
		1996	1997	1998	1999	2000	2001	2002	2003	2004	2005
Acad Opp Center	N	1,042	1,035	1,108	1,223	1,308	1,331	1,291	1,249	1,147	1,230
	Av Cr	9.5	9.5	9.4	9.9	10.2	10.3	10.5	10.7	10.6	10.6
Architecture	N	541	606	594	632	641	662	626	623	650	640
	Av Cr	13.4	13.5	13.5	13.4	13.7	13.7	13.9	14.0	13.8	14.2
Arts	N	1,078	1,193	1,305	1,400	1,481	1,537	1,587	1,676	1,759	1,858
	Av Cr	12.1	12.4	12.4	12.6	12.7	12.8	12.8	13.1	12.9	13.0
Business	N	2,592	2,807	3,084	3,237	3,249	3,367	3,319	3,270	3,372	3,635
	Av Cr	11.4	11.6	11.6	11.8	12.0	12.1	12.4	12.6	12.6	12.9
Education	N	1,788	1,829	1,821	1,854	1,884	2,011	2,032	2,118	2,018	2,064
	Av Cr	11.2	11.6	11.6	11.6	11.8	11.9	12.4	12.7	12.8	12.8
Engineering	N	1,242	1,327	1,441	1,492	1,637	1,666	1,631	1,562	1,561	1,490
	Av Cr	11.7	11.9	12.1	11.9	12.0	12.1	12.2	12.5	12.3	12.5
Health Sciences	N	1,009	964	919	888	815	746	840	1,002	1,139	1,276
	Av Cr	12.8	12.8	13.0	13.2	13.3	13.3	13.3	13.2	13.4	13.4
Informatn Studies	N			29	51	106	162	171	152	161	144
	Av Cr			12.1	12.2	11.3	11.2	11.3	11.5	11.0	11.1
Letters & Science	N	4,927	5,010	5,105	5,366	5,621	5,885	6,089	6,453	7,126	7,342
	Av Cr	11.7	11.9	12.0	12.2	12.3	12.2	12.4	12.6	12.8	12.7
Nursing	N	796	770	783	805	842	895	1,159	1,430	1,552	1,410
	Av Cr	10.8	11.4	11.3	11.3	11.3	11.4	11.5	11.6	11.6	11.7
Social Welfare	N	842	776	783	784	756	708	697	722	857	968
	Av Cr	11.8	11.9	11.9	12.0	12.1	12.1	12.2	12.6	12.6	12.9
Special Programs	N	1,606	1,404	1,423	1,316	1,296	1,444	1,215	1,159	1,312	1,332
	Av Cr	4.5	4.6	4.6	4.6	4.7	4.6	4.8	5.0	5.4	5.5
Total	N	17,463	17,721	18,395	19,048	19,636	20,414	20,657	21,416	22,654	23,389
	Av Cr	10.9	11.2	11.3	11.4	11.6	11.6	11.9	12.1	12.1	12.3

**Average Credit Load By Academic Group - Graduates**

		Fall 1996	Fall 1997	Fall 1998	Fall 1999	Fall 2000	Fall 2001	Fall 2002	Fall 2003	Fall 2004	Fall 2005
Architecture	N	215	208	189	206	176	185	165	201	220	193
	Av Cr	9.7	10.0	9.5	9.4	9.5	9.3	9.5	9.5	9.5	9.3
Arts	N	112	117	100	115	101	100	93	99	106	102
	Av Cr	8.0	8.0	7.3	7.9	7.3	7.8	8.2	8.6	7.8	8.3
Business	N	745	826	802	761	817	810	712	712	749	770
	Av Cr	4.6	5.0	4.8	4.6	4.9	5.7	6.3	6.3	6.2	6.3
Education	N	905	926	881	994	908	889	842	834	788	774
	Av Cr	4.9	4.8	5.0	5.2	5.4	5.6	6.1	6.4	6.2	6.0
Engineering	N	303	294	299	291	288	274	299	313	319	307
	Av Cr	4.6	4.6	5.1	5.4	5.3	5.5	6.3	6.0	5.7	5.4
Health Sciences	N	96	105	112	115	113	108	111	106	130	126
	Av Cr	8.4	7.5	7.9	7.7	8.2	8.4	8.5	8.8	8.7	8.7
Informatn Studies	N	276	299	289	258	294	317	316	301	329	428
	Av Cr	5.5	5.3	5.8	5.6	5.6	5.3	5.7	5.5	5.6	5.5
Letters & Science	N	1,084	1,089	1,108	1,082	1,024	1,069	984	1,249	1,322	1,320
	Av Cr	5.7	5.6	5.7	5.9	5.8	6.0	6.7	6.5	6.5	6.4
Nursing	N	187	193	167	147	141	123	108	163	202	246
	Av Cr	4.6	5.2	5.6	5.5	5.7	5.0	5.5	5.9	5.7	6.0
Social Welfare	N	448	460	465	418	402	331	373	361	310	308
	Av Cr	7.2	7.2	7.0	7.2	7.1	7.0	7.1	7.5	8.0	8.3
Special Programs	N	135	94	88	111	81	66	399	95	79	83
	Av Cr	2.5	2.6	2.5	2.9	2.7	2.9	3.6	6.1	6.3	6.5
Total	N	4,506	4,611	4,500	4,498	4,345	4,272	4,402	4,434	4,554	4,657
	Av Cr	5.6	5.6	5.7	5.8	5.8	6.0	6.3	6.6	6.6	6.5

University of Wisconsin--Milwaukee

**Average Credit Load By Year Level**

		Fall	Fall	Fall	Fall	Fall	Fall	Fall	Fall	Fall	Fall
		1996	1997	1998	1999	2000	2001	2002	2003	2004	2005
UGRD New	N	2,253	2,479	2,700	2,938	2,980	3,024	3,269	3,763	3,772	4,300
Freshman	Av Cr	12.0	12.0	12.1	12.4	12.3	12.2	12.4	12.6	12.6	12.6
Other	N	1,454	1,434	1,581	1,704	1,557	1,610	1,683	1,617	1,739	1,775
Freshman	Av Cr	10.9	10.9	10.7	11.1	11.1	11.0	11.5	11.7	11.7	11.9
Sophomore	N	4,049	4,327	4,474	4,631	5,145	5,280	4,698	4,845	5,240	5,270
	Av Cr	12.3	12.5	12.4	12.4	12.6	12.6	12.8	13.0	13.2	13.3
Junior	N	2,718	2,794	2,894	3,165	3,286	3,569	4,090	4,089	4,283	4,433
	Av Cr	12.3	12.6	12.6	12.7	12.7	12.8	12.8	13.0	13.0	13.2
Senior	N	4,826	4,756	4,804	4,791	4,967	5,043	5,246	5,542	5,946	5,960
	Av Cr	11.2	11.3	11.5	11.4	11.6	11.8	12.0	12.2	12.2	12.3
Special	N	2,163	1,931	1,942	1,819	1,701	1,888	1,671	1,560	1,674	1,651
	Av Cr	5.1	5.5	5.3	5.4	5.3	5.3	5.6	5.9	5.9	5.9
Total	N	17,463	17,721	18,395	19,048	19,636	20,414	20,657	21,416	22,654	23,389
	Av Cr	10.9	11.2	11.3	11.4	11.6	11.6	11.9	12.1	12.1	12.3
GRAD Master	N	3,166	3,235	3,145	3,009	2,997	2,951	3,068	3,105	3,114	3,178
	Av Cr	6.0	6.1	6.1	6.3	6.3	6.5	6.8	7.1	7.1	7.0
Doctoral	N	779	779	722	709	699	696	700	776	898	944
	Av Cr	5.3	5.0	5.4	5.6	5.4	5.6	6.0	6.1	6.1	6.0
Non Degree	N	561	597	633	780	649	625	631	545	532	521
	Av Cr	3.5	3.9	3.8	4.1	3.8	4.1	4.3	4.5	4.5	4.4
Specialist	N							3	8	10	14
	Av Cr							5.0	5.1	3.3	4.6
Total	N	4,506	4,611	4,500	4,498	4,345	4,272	4,402	4,434	4,554	4,657
	Av Cr	5.6	5.6	5.7	5.8	5.8	6.0	6.3	6.6	6.6	6.5
Total	N	21,969	22,332	22,895	23,546	23,981	24,686	25,059	25,850	27,208	28,046
	Av Cr	9.8	10.1	10.2	10.4	10.5	10.6	10.9	11.2	11.2	11.3

**Fall 2005 FTE By Academic Group and Year Level**

	AOC	ARTS	BUS	CEAS	CHS	EDUC	L&S	NURS	SARUP	SOIS	SPPM	SW	Total
UGRD New Freshman	330	338	521	224	172	202	1,344	168	172	5	20	118	3,614
Other Freshman	258	102	180	88	62	75	469	103	13	4	3	51	1,408
Sophomore	205	438	752	299	322	406	1,632	184	167	13	16	235	4,671
Junior	62	317	770	232	215	339	1,378	207	116	39	10	206	3,890
Senior	13	418	889	393	361	609	1,403	380	136	45	11	222	4,879
Special		0	5	4	5	130	13	60	2		432	1	653
Total	868	1,612	3,118	1,240	1,138	1,761	6,240	1,101	606	106	492	832	19,115
GRAD Master		68	336	72	86	250	392	85	134	183	39	203	1,848
Doctoral			37	93	9	136	461	57	12				805
Non Degree		2	49	11	0	50	38	4	9	12	6	10	191
Specialist						5							5
Total		70	422	176	95	441	891	147	154	195	45	213	2,850
Total	868	1,683	3,540	1,416	1,233	2,202	7,131	1,248	760	301	537	1,046	21,964

University of Wisconsin--Milwaukee

**Credits Conveyed by Subject and Year Level - Fall 2005**

**Architecture**

	New Freshman	Other Freshman	Sophomore	Junior	Senior	Special	Master	Doctoral	Non Degree	Total
Arch	1,015	111	1,019	920	1,587	87	1,304	57	38	6,138
UrbPlan	84	24	252	255	159	6	486	21	67	1,354
Total	1,099	135	1,271	1,175	1,746	93	1,790	78	105	7,492

**Arts**

	New Freshman	Other Freshman	Sophomore	Junior	Senior	Special	Master	Doctoral	Non Degree	Total
Art	1,945	600	2,029	1,487	1,818	94	189		12	8,174
Art Ed	3	9	39	54	454	43	3			605
Dance	501	393	1,387	600	777	83	43			3,784
Film	726	174	573	459	681	51	95	3		2,762
FineArt			21	12	32	3				68
Mus Ed			1	22	273	36	6			338
Music	1,834	658	1,719	820	807	76	303		5	6,222
MusPerf	218	29	163	113	190	8	106		7	834
Theatre	912	209	918	463	419	75	4			3,000
ThrPTTP				44	133		44			221
Total	6,139	2,072	6,850	4,074	5,584	469	793	3	24	26,008

**Business**

	New Freshman	Other Freshman	Sophomore	Junior	Senior	Special	Master	Doctoral	Non Degree	Total
Bus Adm	1,380	381	3,620	9,548	12,037	400	2,347	230	315	30,258
BusMgmt							2,106	9	219	2,334
Global	46	22	80	37	48	4				237
Total	1,426	403	3,700	9,585	12,085	404	4,453	239	534	32,829

**Education**

	New Freshman	Other Freshman	Sophomore	Junior	Senior	Special	Master	Doctoral	Non Degree	Specialist	Total
Ad Ldsp				57	126	243	511	175	243		1,355
Couns				21	39	6	979	168	51	12	1,276
CurrIns	143	21	346	767	4,665	992	605	94	121		7,754
Ed Pol	23	66	467	442	678	78	192	24	9		1,979
Ed Psy	985	129	76	397	617	212	415	358	72	53	3,314
Educ								108	3		111
ExcEduc	147	195	648	591	927	843	356	33	108		3,848
Total	1,298	411	1,537	2,275	7,052	2,374	3,058	960	607	65	19,637

**Engineering**

	New Freshman	Other Freshman	Sophomore	Junior	Senior	Special	Master	Doctoral	Non Degree	Total
Civ Eng	63	24	244	378	941	43	164	90	27	1,974
CompSci	415	224	793	612	858	109	264	180	9	3,464
EAS		9	52	31	62					154
ElecEng	87	24	265	496	1,167	45	214	102	60	2,460

**Credits Conveyed by Subject and Year Level - Fall 2005****Engineering**

	New Freshman	Other Freshman	Sophomore	Junior	Senior	Special	Master	Doctoral	Non Degree	Total
Ind Eng	45	27	126	231	339	9	57	70	12	916
MatlEng	24	17	213	144	229	8	30	56	6	727
MechEng	297	72	260	266	1,177	34	104	92	15	2,317
Total	931	397	1,953	2,158	4,773	248	833	590	129	12,012

**Health Sciences**

	New Freshman	Other Freshman	Sophomore	Junior	Senior	Special	Master	Doctoral	Non Degree	Total
AHP	155	2								157
C L Sci	198	152	729	666	1,392	59	112	42	5	3,355
ComSDis	39	33	142	109	194	69	487		18	1,091
HCA	260	232	1,008	592	826	48	18	8	4	2,996
HMS	418	140	812	672	1,283	42	122	12		3,501
OccThpy	3	11	116	305	766	3	132	7	1	1,344
Spt&Rec	484	387	896	587	740	118	50	27	5	3,294
TherRec	48	2	115	93	125	11				394
Total	1,605	959	3,818	3,024	5,326	350	921	96	33	16,132

**Information Studies**

	New Freshman	Other Freshman	Sophomore	Junior	Senior	Special	Master	Doctoral	Non Degree	Total
InfStud	24	60	178	497	484	41	2,306	23	127	3,740
Total	24	60	178	497	484	41	2,306	23	127	3,740

**Letters & Science**

	New Freshman	Other Freshman	Sophomore	Junior	Senior	Special	Master	Doctoral	Non Degree	Total
Africol	456	447	975	513	486	75	3			2,955
Anthro	729	354	1,034	745	758	147	507	153	12	4,439
Arabic	40	4	66	14	37	20	8	3	7	199
ArtHist	435	126	747	810	954	189	183	3		3,447
Astron	458	151	365	146	122	6				1,248
Atm Sci	234	63	309	117	197	3	64	3	5	995
Bio Sci	1,964	1,147	4,071	2,529	2,468	287	241	282	52	13,041
Celtic					6	3				9
CES	102	39	169	96	100	11				517
Chem	1,325	647	2,907	1,494	1,336	217	114	436	12	8,488
Classic	909	327	772	328	309	50				2,695
Commun	828	489	1,695	1,961	2,061	75	225	9	18	7,361
CompLit	420	162	343	243	191	55	36			1,450
Econ	2,637	990	2,742	1,401	1,201	258	318	339	33	9,919
English	8,036	2,118	4,755	3,338	2,901	371	352	521	39	22,431
ESL	195	81	81	30	21	24	3	24	3	462
Ethnic	378	261	678	288	168	33				1,806
ExMural			36	72	48		18	21		195

**Credits Conveyed by Subject and Year Level - Fall 2005**

## Letters &amp; Science

	New Freshman	Other Freshman	Sophomore	Junior	Senior	Special	Master	Doctoral	Non Degree	Total
FilmStd		3	66	33	37	3				142
FLL	51	6					18		9	84
French	289	120	385	267	206	138	68	4	6	1,483
Geo Sci	703	503	1,864	780	547	42	56			4,495
Geog	821	372	1,332	1,017	864	123	152	126	16	4,823
German	168	43	298	128	159	69	15		6	886
Global	81	25	84	24	45					259
Greek	4		23	8	27	3	7		3	75
Hebr St	257	128	331	180	192	236	4			1,328
Hist	1,794	828	3,006	2,202	2,407	375	317	67	57	11,053
Honors	348	39	237	43	75					742
Ind Rel							130		9	139
IntlSt				14	68	12				94
Italian	104	61	353	156	163	96	4			937
JMC	795	306	1,464	1,671	1,522	81	148	11	3	6,001
L&S Hum	2	8	42	15	6	6				79
L&S NS	8	4	3	1	2					18
L&S SS	8	2	27	8	4	3				52
Latin	7	24	45	45	49	11	12			193
Latino	45	48	33	12	18					156
LibriSt							101	3		104
Linguis	581	364	1,089	578	451	144	90	21	9	3,327
MAFLL							121		3	124
Math	7,001	1,825	4,363	1,957	1,322	300	219	237	6	17,230
MthStat	27	12	168	198	255	15	36	24	18	753
PeaceSt	111	30	93	30	18	3				285
Philos	1,158	540	1,563	939	704	123	184	3	6	5,220
Physics	391	240	1,597	1,262	933	147	37	202	6	4,815
Pol Sci	945	438	1,698	1,581	1,389	210	390	138	132	6,921
Polish	8	8	8	8	8	23				63
Portugs	74	21	44	88	137	31	11			406
Psych	2,658	1,174	2,970	2,322	2,180	186	47	527	22	12,086
Russian	73	34	49	30	16	20	7		4	233
Sociol	1,569	735	1,869	1,701	1,473	63	200	16	9	7,635
Spanish	816	272	915	650	713	342	116	9	25	3,858
Urb Std	117	39	105	108	102		47	100	12	630
Wmns	109	78	172	140	147	4	6	9	3	668
Total	40,269	15,736	48,041	32,321	29,603	4,633	4,615	3,291	545	179,054

## Nursing

	New Freshman	Other Freshman	Sophomore	Junior	Senior	Special	Master	Doctoral	Non Degree	Total
Nurs	554	438	905	1,480	4,693	1,006	1,016	351	58	10,501
UWS NSG		22	48	54	85	48				257
Total	554	460	953	1,534	4,778	1,054	1,016	351	58	10,758

## Social Welfare

**Credits Conveyed by Subject and Year Level - Fall 2005**

Social Welfare

	New Freshman	Other Freshman	Sophomore	Junior	Senior	Special	Master	Doctoral	Non Degree	Total
Crm Jst	756	428	1,425	1,121	897	43	156	3	18	4,847
Soc Wrk	102	58	342	585	857	85	2,232	4	111	4,376
Total	858	486	1,767	1,706	1,754	128	2,388	7	129	9,223

University of Wisconsin--Milwaukee

**Credit Affinity - Fall 2005**

		Student Academic Group:												
		AOC	ARTS	BUS	CEAS	CHS	EDUC	L&S	NURS	SARUP	SOIS	SPPM	SW	Total
Credits	ARTS	970	15,099	1,420	580	411	2,085	3,493	332	719	100	319	480	26,008
Conveyed	BUS	575	223	28,493	292	359	133	1,803	21	159	41	622	108	32,829
By:	CEAS	97	187	199	10,608	22	48	469	4	119	13	218	28	12,012
	CHS	624	418	796	263	9,911	298	2,092	896	170	24	266	374	16,132
	EDUC	1,243	361	216	51	369	15,240	990	198	39	12	773	145	19,637
	L&S	8,757	8,557	19,812	8,145	6,825	13,010	90,854	6,607	3,530	459	5,041	7,457	179,054
	NURS	169	8	17	5	136	23	359	9,844	6		170	21	10,758
	SARUP	126	42	120	150	24	3	697	12	6,088		218	12	7,492
	SOIS	18	3	57	27	6	60	112	9	3	3,280	158	7	3,740
	SW	443	131	511	132	97	131	1,116	69	48		133	6,412	9,223
	Total	13,022	25,029	51,641	20,253	18,160	31,031	101,985	17,992	10,881	3,929	7,918	15,044	316,885

**Credits Conveyed by Subject - Fall Semesters****Architecture**

	<u>Fall 2002</u>	<u>Fall 2003</u>	<u>Fall 2004</u>	<u>Fall 2005</u>
Arch	5,930	6,255	6,313	6,138
UrbPlan	1,252	1,200	1,331	1,354
Total	7,182	7,455	7,644	7,492

**Arts**

	<u>Fall 2002</u>	<u>Fall 2003</u>	<u>Fall 2004</u>	<u>Fall 2005</u>
Art	7,533	7,991	7,772	8,174
Art Ed	531	596	595	605
Dance	2,868	3,172	3,611	3,784
Film	1,660	1,967	2,764	2,762
FineArt	27	66	114	68
Mus Ed	302	314	292	338
Music	5,244	5,569	5,758	6,222
MusPerf	608	650	722	834
Theatre				3,000
Thr BA	2,218	2,257	2,509	
ThrPTTP	29	263	193	221
Total	21,020	22,845	24,330	26,008

**Business**

	<u>Fall 2002</u>	<u>Fall 2003</u>	<u>Fall 2004</u>	<u>Fall 2005</u>
Bus Adm	27,906	27,655	29,378	30,258
BusMgmt	2,189	2,002	1,941	2,334
Global		45	116	237
Total	30,095	29,702	31,435	32,829

**Education**

	<u>Fall 2002</u>	<u>Fall 2003</u>	<u>Fall 2004</u>	<u>Fall 2005</u>
Ad Ldsp	1,180	1,057	1,259	1,355
Couns	1,264	1,467	1,345	1,276
CurrIns	7,847	9,037	7,748	7,754
Ed Pol	2,176	2,172	1,905	1,979
Ed Psy	3,129	2,939	3,131	3,314
Educ	693	132	135	111
ExcEduc	2,989	3,154	3,199	3,848
Phy Ed	98	106	166	
Total	19,376	20,064	18,888	19,637

**Engineering**

	<u>Fall 2002</u>	<u>Fall 2003</u>	<u>Fall 2004</u>	<u>Fall 2005</u>
Civ Eng	1,923	1,943	1,812	1,974
CompSci	4,847	4,191	3,955	3,464
EAS	81	85	109	154
ElecEng	2,382	2,294	2,389	2,460
Ind Eng	1,346	1,298	1,204	916
MatlEng	811	700	773	727
MechEng	1,989	2,028	1,967	2,317

**Credits Conveyed by Subject - Fall Semesters****Engineering**

	<u>Fall 2002</u>	<u>Fall 2003</u>	<u>Fall 2004</u>	<u>Fall 2005</u>
Total	13,379	12,539	12,209	12,012

**Health Sciences**

	<u>Fall 2002</u>	<u>Fall 2003</u>	<u>Fall 2004</u>	<u>Fall 2005</u>
AHP	88	126	163	157
C L Sci	1,804	2,341	2,763	3,355
ComSDis	1,064	1,023	1,085	1,091
HCA	1,131	1,213	2,573	2,996
HIA	828	1,018		
HMS		3,095	3,352	3,501
Hum Kin	2,662			
OccThpy	1,679	1,579	1,460	1,344
Spt&Rec	3,945	3,624	3,513	3,294
TherRec	160	121	184	394
Total	13,361	14,140	15,093	16,132

**Information Studies**

	<u>Fall 2002</u>	<u>Fall 2003</u>	<u>Fall 2004</u>	<u>Fall 2005</u>
InfStud	3,502	3,467	3,421	3,740
Total	3,502	3,467	3,421	3,740

**Letters & Science**

	<u>Fall 2002</u>	<u>Fall 2003</u>	<u>Fall 2004</u>	<u>Fall 2005</u>
Africol	2,813	2,142	2,655	2,955
Anthro	3,346	3,459	4,133	4,439
Arabic	77	125	164	199
ArtHist	2,772	3,395	3,174	3,447
Astron	987	1,006	1,080	1,248
Atm Sci	948	948	987	995
Bio Sci	10,387	11,917	12,862	13,041
Celtic				9
CES			560	517
Chem	6,157	7,956	8,694	8,488
Classic	1,847	2,291	2,754	2,695
Commun	6,273	7,265	7,608	7,361
CompLit	1,434	1,319	1,464	1,450
Econ	7,504	8,423	8,518	9,919
English	20,342	21,204	21,736	22,431
Env Std	593	481		
ESL	552	567	591	462
Ethnic	1,902	1,678	1,998	1,806
ExMural	12	18	42	195
FilmStd	3	126	44	142
FLL	42	99	75	84
French	1,092	1,135	1,322	1,483
Geo Sci	3,930	3,654	4,106	4,495
Geog	3,133	3,541	3,956	4,823
German	1,001	823	964	886

**Credits Conveyed by Subject - Fall Semesters****Letters & Science**

	<u>Fall 2002</u>	<u>Fall 2003</u>	<u>Fall 2004</u>	<u>Fall 2005</u>
Global		37	116	259
Greek	39	65	62	75
Hebr St	556	914	1,179	1,328
Hist	9,600	9,589	10,445	11,053
Honors	770	769	782	742
Ind Rel	189	198	163	139
IntlSt	59	77	79	94
Italian	634	758	861	937
JMC	6,362	6,350	5,990	6,001
L&S Hum	42	105	141	79
L&S NS	22	19	24	18
L&S SS	24	44	62	52
Latin	193	187	193	193
Latino	108	102	150	156
LibriSt	112	120	129	104
Linguis	2,733	2,886	3,118	3,327
MAFLL	81	136	114	124
Math	15,449	16,141	16,607	17,230
MthStat	525	615	629	753
PeaceSt	27	93	252	285
Philos	4,224	4,473	5,366	5,220
Physics	4,125	4,434	4,839	4,815
Pol Sci	5,154	6,078	6,681	6,921
Polish	37	52	57	63
Portugs	195	261	272	406
Psych	10,780	11,016	12,259	12,086
Russian	130	149	177	233
Sociol	6,171	7,196	7,869	7,635
Spanish	2,913	3,076	3,570	3,858
Urb Std	426	541	561	630
Wmns	447	360	492	668
Total	149,274	160,413	172,726	179,054

**Nursing**

	<u>Fall 2002</u>	<u>Fall 2003</u>	<u>Fall 2004</u>	<u>Fall 2005</u>
Nurs	8,681	10,119	10,587	10,501
UWS NSG	125	155	228	257
Total	8,806	10,274	10,815	10,758

**Social Welfare**

	<u>Fall 2002</u>	<u>Fall 2003</u>	<u>Fall 2004</u>	<u>Fall 2005</u>
Crm Jst	3,138	3,750	4,433	4,847
Soc Wrk	3,891	3,992	4,211	4,376
Total	7,029	7,742	8,644	9,223

University of Wisconsin--Milwaukee

**Semester Grade Point Average by Year Level**

		Fall 1996	Fall 1997	Fall 1998	Fall 1999	Fall 2000	Fall 2001	Fall 2002	Fall 2003	Fall 2004	Fall 2005
New Freshman	Students	2,147	2,380	2,591	2,824	2,873	2,926	3,209	3,671	3,700	4,213
	Average GPA	2.62	2.70	2.68	2.76	2.86	2.82	2.84	2.86	2.80	2.69
Other Freshman	Students	1,344	1,290	1,436	1,527	1,394	1,458	1,618	1,527	1,655	1,690
	Average GPA	2.39	2.44	2.46	2.41	2.46	2.47	2.43	2.40	2.34	2.33
Sophomore	Students	3,830	4,095	4,229	4,380	4,895	5,041	4,593	4,696	5,106	5,146
	Average GPA	2.83	2.84	2.86	2.85	2.87	2.84	2.88	2.87	2.83	2.78
Junior	Students	2,627	2,692	2,780	3,038	3,157	3,454	4,024	3,981	4,175	4,319
	Average GPA	3.01	3.04	3.03	3.05	3.02	3.05	2.98	2.97	2.96	2.94
Senior	Students	4,626	4,558	4,624	4,583	4,783	4,873	5,150	5,391	5,789	5,817
	Average GPA	3.18	3.20	3.20	3.21	3.23	3.20	3.20	3.21	3.19	3.17
Special	Students	1,954	1,738	1,742	1,622	1,536	1,703	1,613	1,434	1,565	1,560
	Average GPA	3.26	3.32	3.32	3.37	3.34	3.31	3.31	3.37	3.23	3.24
Master	Students	3,072	3,126	3,038	2,913	2,903	2,863	3,024	3,017	3,026	3,099
	Average GPA	3.69	3.67	3.68	3.70	3.70	3.70	3.69	3.71	3.69	3.70
Doctoral	Students	764	765	711	692	690	682	693	764	884	935
	Average GPA	3.77	3.77	3.76	3.77	3.77	3.77	3.73	3.73	3.78	3.77
Non Degree	Students	515	520	580	718	576	566	608	503	486	465
	Average GPA	3.71	3.63	3.66	3.68	3.67	3.64	3.66	3.62	3.57	3.63
Specialist	Students							3	8	10	14
	Average GPA							4.00	3.89	4.00	3.90
Total	Students	20,879	21,164	21,731	22,297	22,807	23,566	24,535	24,992	26,396	27,258
	Average GPA	3.02	3.04	3.03	3.04	3.05	3.04	3.04	3.04	3.00	2.95

**Semester Grade Point Average By Student Academic Group**

**UGRD**

		Fall 1996	Fall 1997	Fall 1998	Fall 1999	Fall 2000	Fall 2001	Fall 2002	Fall 2003	Fall 2004	Fall 2005
AOC	N	952	924	1,006	1,087	1,172	1,215	1,234	1,175	1,093	1,177
	Av gpa	2.30	2.37	2.36	2.37	2.45	2.45	2.35	2.40	2.29	2.28
ARTS	N	1,035	1,142	1,248	1,335	1,423	1,489	1,565	1,637	1,716	1,804
	Av gpa	3.06	3.09	3.07	3.12	3.11	3.07	3.07	3.10	3.09	3.00
BUS	N	2,483	2,696	2,935	3,104	3,118	3,250	3,260	3,197	3,293	3,558
	Av gpa	2.83	2.84	2.85	2.84	2.91	2.93	2.90	2.89	2.88	2.78
CEAS	N	1,179	1,262	1,374	1,414	1,556	1,583	1,603	1,522	1,506	1,446
	Av gpa	2.76	2.81	2.80	2.85	2.91	2.79	2.83	2.81	2.73	2.71
CHS	N	976	929	892	859	790	722	833	974	1,124	1,256
	Av gpa	3.15	3.18	3.20	3.12	3.14	3.15	3.13	3.05	3.02	3.06
EDUC	N	1,718	1,756	1,764	1,767	1,806	1,941	2,003	2,067	1,966	2,010
	Av gpa	3.23	3.22	3.17	3.23	3.20	3.19	3.20	3.21	3.15	3.14
L&S	N	4,647	4,725	4,811	5,058	5,340	5,627	5,935	6,241	6,926	7,154
	Av gpa	2.83	2.86	2.87	2.89	2.92	2.92	2.90	2.90	2.86	2.80
NURS	N	769	748	760	780	815	856	1,141	1,382	1,520	1,375
	Av gpa	3.21	3.28	3.25	3.18	3.21	3.18	3.22	3.18	3.19	3.19
SARUP	N	530	589	584	616	630	653	623	613	641	632
	Av gpa	3.13	3.12	3.10	3.17	3.16	3.11	3.17	3.18	3.18	3.18
SOIS	N			29	49	102	155	170	146	159	134
	Av gpa			3.27	3.25	3.35	3.16	3.16	3.26	3.17	3.10
SPPM	N	1,442	1,238	1,247	1,145	1,153	1,285	1,163	1,052	1,216	1,251
	Av gpa	3.12	3.14	3.15	3.21	3.21	3.21	3.14	3.24	3.08	3.04
SW	N	797	744	752	760	733	679	677	694	830	948
	Av gpa	2.88	2.93	2.99	2.97	2.99	2.99	2.96	2.91	2.87	2.87
Total	N	16,528	16,753	17,402	17,974	18,638	19,455	20,207	20,700	21,990	22,745
	Av gpa	2.93	2.95	2.95	2.96	2.98	2.97	2.96	2.96	2.93	2.88

**Semester Grade Point Average By Student Academic Group**

**GRAD**

		Fall 1996	Fall 1997	Fall 1998	Fall 1999	Fall 2000	Fall 2001	Fall 2002	Fall 2003	Fall 2004	Fall 2005
ARTS	N	109	113	98	110	98	98	92	98	104	99
	Av gpa	3.82	3.87	3.86	3.85	3.75	3.81	3.83	3.86	3.82	3.79
BUS	N	716	799	760	726	781	778	702	697	724	748
	Av gpa	3.56	3.55	3.53	3.56	3.60	3.60	3.56	3.61	3.54	3.59
CEAS	N	292	277	281	274	275	261	296	306	304	298
	Av gpa	3.64	3.62	3.68	3.62	3.56	3.60	3.62	3.56	3.61	3.62
CHS	N	95	102	109	113	111	107	110	105	128	124
	Av gpa	3.71	3.72	3.79	3.81	3.81	3.72	3.72	3.78	3.76	3.82
EDUC	N	867	872	843	956	872	857	826	799	758	747
	Av gpa	3.82	3.78	3.80	3.81	3.81	3.77	3.79	3.80	3.80	3.81
L&S	N	1,056	1,047	1,068	1,042	986	1,029	964	1,201	1,284	1,288
	Av gpa	3.68	3.66	3.67	3.69	3.69	3.73	3.69	3.68	3.72	3.70
NURS	N	184	189	161	141	135	120	106	160	198	240
	Av gpa	3.76	3.72	3.80	3.79	3.74	3.76	3.80	3.83	3.81	3.79
SARUP	N	203	197	186	203	174	181	163	196	218	187
	Av gpa	3.53	3.51	3.54	3.52	3.54	3.48	3.54	3.54	3.52	3.63
SOIS	N	269	289	284	253	278	304	307	291	312	405
	Av gpa	3.80	3.78	3.74	3.78	3.77	3.81	3.75	3.81	3.79	3.75
SPPM	N	121	87	84	101	73	55	395	91	74	80
	Av gpa	3.66	3.72	3.82	3.74	3.67	3.81	3.74	3.65	3.69	3.66
SW	N	439	439	455	404	386	321	367	348	302	297
	Av gpa	3.74	3.73	3.72	3.75	3.79	3.76	3.73	3.75	3.75	3.72
Total	N	4,351	4,411	4,329	4,323	4,169	4,111	4,328	4,292	4,406	4,513
	Av gpa	3.70	3.68	3.69	3.70	3.71	3.70	3.69	3.70	3.70	3.71

University of Wisconsin--Milwaukee

**Fall 2005 Semester Grade Point Average By Student Academic Group & Year Level**

		AOC	ARTS	BUS	CEAS	CHS	EDUC	L&S	NURS	SARUP	SOIS	SPPM	SW	Total
New Freshman	N	487	358	597	251	189	249	1,534	212	170	5	21	140	4,213
	Avg GPA	2.38	2.77	2.55	2.65	2.96	2.68	2.71	2.77	3.08	2.96	2.44	2.66	2.69
Other Freshman	N	355	115	203	113	75	82	548	119	15	4	3	58	1,690
	Avg GPA	2.06	2.64	2.31	2.22	2.54	2.38	2.32	2.56	2.69	3.51	2.38	2.32	2.33
Sophomore	N	246	477	838	327	350	444	1,781	217	173	17	18	258	5,146
	Avg GPA	2.38	2.92	2.74	2.62	2.93	2.88	2.73	3.02	3.18	2.92	2.53	2.73	2.78
Junior	N	75	356	859	257	231	360	1,525	244	124	48	11	229	4,319
	Avg GPA	2.37	3.04	2.86	2.64	3.06	3.20	2.87	3.24	3.19	3.14	2.63	2.97	2.94
Senior	N	14	496	1,055	493	402	676	1,747	452	148	60	12	262	5,817
	Avg GPA	2.37	3.31	2.99	2.93	3.30	3.44	3.05	3.58	3.34	3.10	2.79	3.14	3.17
Special	N		2	6	5	9	199	19	131	2		1,186	1	1,560
	Avg GPA		3.67	2.77	3.44	3.59	3.51	3.24		3.20		3.13	3.97	3.24
Master	N		95	584	163	117	455	686	139	154	374	61	271	3,099
	Avg GPA		3.79	3.61	3.54	3.82	3.82	3.67	3.77	3.62	3.76	3.63	3.73	3.70
Doctoral	N			48	106	6	162	510	86	17				935
	Avg GPA			3.67	3.80	3.87	3.77	3.77	3.85	3.71				3.77
Non Degree	N		4	116	29	1	116	92	15	16	31	19	26	465
	Avg GPA		3.91	3.44	3.58	3.80	3.85	3.52	3.95	3.60	3.64	3.89	3.59	3.63
Specialist	N						14							14
	Avg GPA						3.90							3.90
Total	N	1,177	1,903	4,306	1,744	1,380	2,757	8,442	1,615	819	539	1,331	1,245	27,258
	Avg GPA	2.28	3.03	2.86	2.76	3.10	3.23	2.86	3.24	3.25	3.49	3.09	3.01	2.95

University of Wisconsin--Milwaukee

**Degrees Granted By Degree Level**

	Bachelors	Masters	Education Specialists	Doctors	Total	Cumulative Total
1956-57	308	0			308	308
1957-58	406	58			464	772
1958-59	588	126			714	1,486
1959-60	670	114			784	2,270
1960-61	588	156			744	3,014
1961-62	640	160			800	3,814
1962-63	718	181			899	4,713
1963-64	807	226			1,033	5,746
1964-65	951	289			1,240	6,986
1965-66	893	410			1,303	8,289
1966-67	1,154	527			1,681	9,970
1967-68	1,169	622		3	1,794	11,764
1968-69	1,405	661		4	2,070	13,834
1969-70	1,661	728		6	2,395	16,229
1970-71	2,184	848		16	3,048	19,277
1971-72	2,502	977		25	3,504	22,781
1972-73	2,603	1,098		31	3,732	26,513
1973-74	2,659	955		19	3,633	30,146
1974-75	2,511	1,079		33	3,623	33,769
1975-76	2,634	1,134		49	3,817	37,586
1976-77	2,633	1,195		35	3,863	41,449
1977-78	2,689	1,080		37	3,806	45,255
1978-79	2,553	1,013		51	3,617	48,872
1979-80	2,576	977		38	3,591	52,463
1980-81	2,306	928		42	3,276	55,739
1981-82	2,205	862		35	3,102	58,841
1982-83	2,266	885		54	3,205	62,046
1983-84	2,278	988		44	3,310	65,356
1984-85	2,492	934		69	3,495	68,851
1985-86	2,446	904		63	3,413	72,264
1986-87	2,614	961		55	3,630	75,894
1987-88	2,633	965		56	3,654	79,548
1988-89	2,731	1,000		65	3,796	83,344
1989-90	2,588	944		82	3,614	86,958
1990-91	2,482	1,013		88	3,583	90,541
1991-92	2,453	1,074		88	3,615	94,156
1992-93	2,644	1,120		90	3,854	98,010
1993-94	2,626	1,143		93	3,862	101,872
1994-95	2,608	1,058		78	3,744	105,616
1995-96 Summer 1995	385	262		22	669	106,285
Fall 1995	941	350		33	1,324	107,609
Spring 1996	1,265	540		31	1,836	109,445
1996-97 Summer 1996	361	234		29	624	110,069
Fall 1996	836	270		40	1,146	111,215
Spring 1997	1,195	549		32	1,776	112,991

These numbers reflect the semester the degree was earned, not the semester the degree was posted; therefore numbers can change with each edition of the factbook.

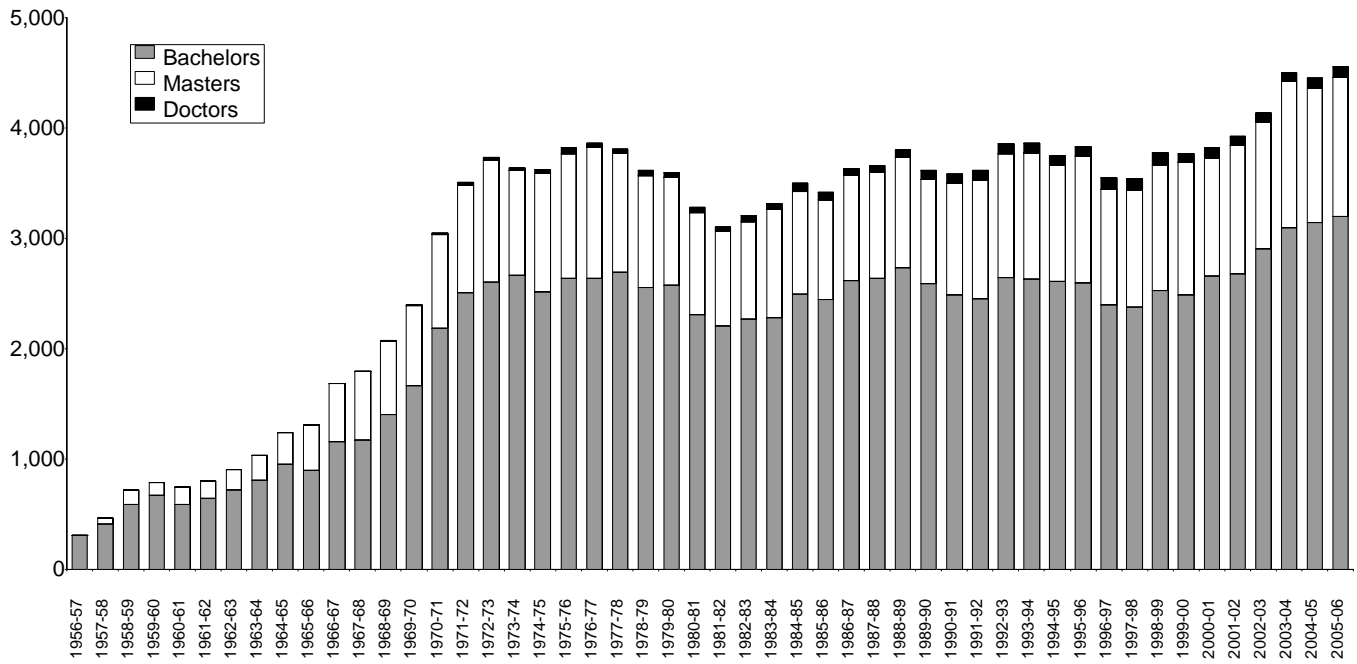
University of Wisconsin--Milwaukee

**Degrees Granted By Degree Level**

	Bachelors	Masters	Education Specialists	Doctors	Total	Cumulative Total
1997-98 Summer 1997	372	230		26	628	113,619
Fall 1997	829	344		33	1,206	114,825
Spring 1998	1,175	486		44	1,705	116,530
1998-99 Summer 1998	356	273		33	662	117,192
Fall 1998	897	293		27	1,217	118,409
Spring 1999	1,269	573		50	1,892	120,301
1999-00 Summer 1999	323	320		29	672	120,973
Fall 1999	932	319		23	1,274	122,247
Spring 2000	1,227	567		25	1,819	124,066
2000-01 Summer 2000	327	237		26	590	124,656
Fall 2000	1,019	283		26	1,328	125,984
Spring 2001	1,310	550		45	1,905	127,889
2001-02 Summer 2001	387	228		29	644	128,533
Fall 2001	960	356		25	1,341	129,874
Spring 2002	1,328	580	12	32	1,952	131,826
2002-03 Summer 2002	426	207		29	662	132,488
Fall 2002	932	345		32	1,309	133,797
UWinteriM 2003	54				54	133,851
Spring 2003	1,487	599	5	25	2,116	135,967
2003-04 Summer 2003	408	256	1	16	681	136,648
Fall 2003	1,029	381		26	1,436	138,084
UWinteriM 2004	58				58	138,142
Spring 2004	1,599	693	7	29	2,328	140,470
2004-05 Summer 2004	396	256	1	22	675	141,145
Fall 2004	1,098	322	1	35	1,456	142,601
UWinteriM 2005	55				55	142,656
Spring 2005	1,590	647	5	32	2,274	144,930
2005-06 Fall 2005	1,139	365	2	26	1,532	146,462
Spring 2006	1,604	628	8	46	2,286	148,748
Summer 2005	402	266		25	693	149,441
UWinteriM 2006	52				52	149,493

These numbers reflect the semester the degree was earned, not the semester the degree was posted; therefore numbers can change with each edition of the factbook.

# History of Degrees Granted



These numbers reflect the semester the degree was earned, not the semester the degree was posted; therefore numbers can change with each edition of the factbook.

University of Wisconsin-Milwaukee

**Academic Majors by Degree Level 2005-06**

Academic Group	Academic Major	Bachelor's	Master's	Doctoral
Health Sciences	Clinical Laboratory Sciences	BS	MS	
	Communication Sciences & Disorders	BS	MS	
	Health Care Administration	BS		
	Health Care Informatics		MS	
	Health Sciences			PhD
	Kinesiology	BS	MS	
	Occupational Therapy	BS	MS	
	Therapeutic Recreation	BS		
Architecture & Urban Planning	Architectural Studies	BS		
	Architecture		MARCH	PhD
	Urban Planning		MUP	
Business Administration	Accounting	BBA		
	Business Administration		MBA	
	Executive MBA		MBA	
	Finance	BBA		
	Human Resources Management	BBA		
	Management		MS	
	Management Information Systems	BBA		
	Management Science			PhD
	Marketing	BBA		
	Production and Operations Management	BBA		
Real Estate and Urban Development	BBA			
Education	Administrative Leadership and Supervision in Education		MS	
	Community Education	BS		
	Cultural Foundations of Education		MS	
	Curriculum and Instruction		MS	
	Education	BS		
	Educational Psychology		MS	
	Educational Studies	BS		
	Exceptional Education	BS	MS	
	School Psychology*			
	Urban Education			PhD
* Educational Specialist degree in school psychology				
Engineering & Applied Science	Civil Engineering	BSE		
	Computer Science	BS	MS	
	Engineering		MS	PhD
	Electrical Engineering	BSE		
	Industrial Engineering	BSE		
	Materials Engineering	BSE		
	Mechanical Engineering	BSE		
	Medical Informatics			PhD
The Arts	Art	BA,BFA	MFA, MA	
	Art Education	BFA	MS	
	Dance	BA,BFA		
	Film	BFA		
	Inter-Arts	BFA		
	Music	BA,BFA	MM	
	Music Education	BFA		
	Performing Arts		MFA	
	Theatre Arts	BA, BFA		

**Academic Majors by Degree Level 2005-06**

Academic Group	Academic Major	Bachelor's	Master's	Doctoral
Letters & Science	Actuarial Science	BA,BS		
	Africology	BA		
	Anthropology	BA	MS	PhD
	Applied Mathematics and Physics	BS		
	Art History		MA	
	Art History and Criticism	BA		
	Atmospheric Sciences	BS		
	Biochemistry	BS		
	Biological Sciences	BA, BS	MS	PhD
	Chemistry	BA, BS	MS	PhD
	Classics	BA		
	Communication	BA	MA	
	Comparative Literature	BA		
	Comparative Study of Religion	BA		
	Conservation & Environment	BA,BS		
	Course in Chemistry	BS		
	Economics	BA	MA	PhD
	English	BA	MA	PhD
	Film (interdisciplinary with FINE ARTS)	BA		
	Foreign Language and Literature		MA	
	French	BA		
	Geography	BA, BS	MA, MS	PhD
	Geosciences	BA, BS	MS	PhD
	German	BA		
	Global Studies	BA		
	Hebrew Studies	BA		
	History	BA	MA	PhD
	Human Resources and Labor Relations		MHRLR	
	International Studies	BA		
	Italian	BA		
	Journalism and Mass Communication	BA		
	Liberal Studies		MA	
	Linguistics	BA		
	Mass Communication		MA	
	Mathematics	BA, BS	MS	PhD
	Medical Science	BS		
	Philosophy	BA	MA	
	Physics	BA, BS	MS	PhD
	Political Science	BA	MA	PhD
	Psychology	BA	MS	PhD
	Public Administration		MPA	
	Russian	BA		
	Sociology	BA	MA	
Spanish	BA			
Urban Studies		MS	PhD	
Women's Studies	BA			
Multidisciplinary - Committee-directed	BA, BS		PhD	
Information studies	Information Resources	BS		
	Library and Information Science		MLIS	
Nursing	Nursing	BS	MS	PhD
	Nursing (Collaborative Program)	BSN		
Social Welfare	Criminal Justice	BS	MS	
	Social Work	BS	MSW	

University of Wisconsin--Milwaukee

**Degrees Granted By Gender and Ethnicity**

			1996-97	1997-98	1998-99	1999-00	2000-01	2001-02	2002-03	2003-04	2004-05	2005-06
Bachelors	Am. Indian	Women	16	10	19	9	9	10	13	13	16	11
		Men	6	6	8	5	7	7	8	5	7	7
		Total	22	16	27	14	16	17	21	18	23	18
	Asian	Women	28	28	29	32	33	27	33	39	28	26
		Men	25	18	29	25	30	32	27	30	28	36
		Total	53	46	58	57	63	59	60	69	56	62
	Black	Women	104	100	101	107	104	117	119	121	115	124
		Men	38	54	54	70	46	50	58	37	66	46
		Total	142	154	155	177	150	167	177	158	181	170
	Hispanic	Women	45	53	37	39	50	45	71	62	71	54
		Men	35	25	33	34	42	34	38	48	41	35
		Total	80	78	70	73	92	79	109	110	112	89
	International	Women	17	30	27	20	14	20	13	18	12	10
		Men	30	30	35	25	30	28	21	24	18	15
		Total	47	60	62	45	44	48	34	42	30	25
	SE Asian	Women	9	11	17	15	22	20	24	30	33	27
		Men	13	12	11	21	27	15	21	19	21	27
		Total	22	23	28	36	49	35	45	49	54	54
	White	Women	1,101	1,078	1,173	1,160	1,229	1,277	1,385	1,564	1,539	1,545
		Men	925	921	949	920	1,013	993	1,068	1,084	1,144	1,234
		Total	2,026	1,999	2,122	2,080	2,242	2,270	2,453	2,648	2,683	2,779
Total			2,392	2,376	2,522	2,482	2,656	2,675	2,899	3,094	3,139	3,197
Masters	Am. Indian	Women	6	1	5	3	6	8	3	8	5	7
		Men	1	4	2	1	1	6	1			1
		Total	7	5	7	4	7	14	4	8	5	8
	Asian	Women	10	12	12	17	16	6	13	12	18	20
		Men	7	9	7	11	8	10	16	12	7	7
		Total	17	21	19	28	24	16	29	24	25	27
	Black	Women	29	29	44	64	43	57	69	63	57	48
		Men	14	10	12	20	15	21	24	20	17	16
		Total	43	39	56	84	58	78	93	83	74	64
	Hispanic	Women	12	17	13	22	29	22	35	40	30	25
		Men	7	8	11	13	12	20	10	17	16	10
		Total	19	25	24	35	41	42	45	57	46	35
	International	Women	31	50	52	50	45	38	40	53	67	72
		Men	64	51	41	75	62	47	64	60	71	73
		Total	95	101	93	125	107	85	104	113	138	145
	SE Asian	Women	3	4	3	5	4	4	9	5	5	5
		Men	1	2	3	1	2	4	2	3	6	3
		Total	4	6	6	6	6	8	11	8	11	8
	White	Women	559	564	582	609	515	607	561	662	601	618
		Men	309	299	352	315	312	314	304	375	325	354
		Total	868	863	934	924	827	921	865	1,037	926	972
Total			1,053	1,060	1,139	1,206	1,070	1,164	1,151	1,330	1,225	1,259
Education Specialists	Am. Indian	Women						1				
		Total						1				
	Black	Women						1				
		Total						1				
	White	Women						7	5	7	6	10

These numbers reflect the semester the degree was earned, not the semester the degree was posted; therefore numbers can change with each edition of the factbook.

University of Wisconsin--Milwaukee

**Degrees Granted By Gender and Ethnicity**

			1996-97	1997-98	1998-99	1999-00	2000-01	2001-02	2002-03	2003-04	2004-05	2005-06	
		Men							3		1		
		Total							10	5	8	7	10
	Total								12	5	8	7	10
Doctors	Am. Indian	Men		1		1							
		Total		1		1							
	Asian	Women	2	1	4	1	2				1	2	1
		Men		2	3	1	3			2	1		3
		Total	2	3	7	2	5			2	2	2	4
	Black	Women	4	1	4	2	5	4		3	2	5	6
		Men	1		2		2	1			3	1	
		Total	5	1	6	2	7	5		3	5	6	6
	Hispanic	Women	1				3	1			1		
		Men		1	5	2	1	4					
		Total	1	1	5	2	4	5			1		
	International	Women	7	7	9	3	5	8		6	4	10	10
		Men	14	18	14	17	27	16		19	13	24	23
		Total	21	25	23	20	32	24		25	17	34	33
	SE Asian	Women					1						
		Men				1				1		2	1
		Total				1	1			1		2	1
	White	Women	42	33	37	30	24	33		30	27	27	33
		Men	30	39	32	19	24	19		25	19	18	20
		Total	72	72	69	49	48	52		55	46	45	53
Total		101	103	110	77	97	86		86	71	89	97	

These numbers reflect the semester the degree was earned, not the semester the degree was posted; therefore numbers can change with each edition of the factbook.

University of Wisconsin--Milwaukee

**Degrees By Major Within Academic Group**

Bachelors

		1996-97	1997-98	1998-99	1999-00	2000-01	2001-02	2002-03	2003-04	2004-05	2005-06
ARTS	Art	62	95	118	119	140	109	106	130	126	112
	Art Education	10	18	13	17	19	15	15	27	24	21
	Dance	8	12	6	7	7	9	12	21	16	22
	Film	23	14	34	18	28	23	26	28	19	27
	Inter Arts	4	5	1	6	3	5	10	10	16	23
	Music	8	4	15	19	17	18	11	17	18	37
	Music Education	10	7	9	17	13	11	10	16	19	12
	Theatre	2	13	13	22	20	24	20	12	12	11
	Theatre Studies						1	11	16	15	21
Total	127	168	209	225	247	215	221	277	265	286	
BUS	Accounting	117	92	117	123	107	83	105	129	130	115
	Business Special Option	1	1	1							
	Finance	135	121	145	129	143	157	159	197	215	198
	Human Resources	34	45	36	41	44	70	77	65	66	63
	Management Info Systems	84	77	128	139	136	153	148	116	88	71
	Marketing	115	146	140	146	182	201	225	254	260	283
	Production & Oper Mgt	17	12	15	20	19	18	16	22	40	29
	Real Estate & Urban Dev	44	30	28	41	35	16			1	
	Total	547	524	610	639	666	698	730	783	800	759
CEAS	Civil Engineering	35	35	34	29	31	26	34	31	39	42
	Computer Science	30	29	31	45	52	48	81	65	67	53
	Electrical Engineering	32	34	30	28	31	43	48	39	51	32
	Industrial Engineering	15	11	6	10	4	15	14	6	9	7
	Materials Engineering	2	1	7	2	6	4	2	2	3	4
	Mechanical Engineering	57	55	68	56	75	50	59	54	44	54
	Total	171	165	176	170	199	186	238	197	213	192
CHS	Clinical Lab Sci	21	25	19	15	14	11	12	20	28	31
	Comm Sci & Dis	21	18	19	17	12	9	18	20	18	15
	Health Care Admin	19	20	15	13	15	17	16	20	13	24
	Health Info Admin	23	17	7	6	5	4	3	2		
	Health Sciences	1	4	1	2	2					
	Kinesiology	22	16	27	25	43	40	40	32	47	51
	Occupational Therapy	65	69	75	78	63	49	44	36	30	28
	Recreation	10	12	4	10	9	2	6	6	4	7
Total	182	181	167	166	163	132	139	136	140	156	
EDUC	Community Educ	27	40	49	24	36	37	35	37	31	29
	Early Childhood Educ	6			4	1		1		1	
	Educ French		1								
	Educ German					1					
	Educ Spanish	4	2			1		2			
	Education	66	56	72	60	104	93	146	254	248	272
	Educational Studies	6	9	10	10	17	11	20	23	33	30
	Elementary Education	82	84	89	87	63	87	74	11		
	English as a 2nd Lang		1		1						

These numbers reflect the semester the degree was earned, not the semester the degree was posted; therefore numbers can change with each edition of the factbook.

University of Wisconsin--Milwaukee

**Degrees By Major Within Academic Group**

Bachelors

	1996-97	1997-98	1998-99	1999-00	2000-01	2001-02	2002-03	2003-04	2004-05	2005-06
Exceptional Education	52	42	48	16	10	5	1	1	6	1
Secondary Education						1				
<b>Total</b>	<b>243</b>	<b>235</b>	<b>268</b>	<b>202</b>	<b>233</b>	<b>234</b>	<b>279</b>	<b>326</b>	<b>319</b>	<b>332</b>
<b>L&amp;S</b>										
Actuarial Science										2
Africology	5	6	7	5	6	4	3	5	7	4
Anthropology	26	19	31	23	38	35	24	21	38	18
Applied Math & Phys		4	1	2	2	1	1			2
Art History	12	10	12	10	14	11	20	14	25	19
Atmospheric Sci	4		2	7	4	4	2	4	3	8
Biochemistry	6	3	7	6	3	3	3	6	7	6
Biological Sci	64	50	59	54	67	76	84	74	59	71
Chemistry	3	10	12	6	7	11	11	3	9	7
Chemistry Course	1	1		1	1			1	2	1
Classics	1	4	2	2	5	4	1	4	3	1
Committee Interdis	16	14	16	17	20	28	46	58	60	46
Communication	50	59	71	74	74	98	93	103	131	124
Comp Study of Religion	2	1	2	6	7	6	5	4	7	6
Comparative Lit	1		3	2	2	2	2		4	3
Conservation Sci	21	25	25	21	21	17	23	21	19	15
Economics	36	30	40	25	38	43	40	44	49	62
English	79	97	104	67	76	82	82	84	112	114
Film Studies	2	5	4	4	7	7	9	7	11	12
French	11	10	6	6	7	7	12	9	7	7
Geography	20	12	19	16	19	15	18	15	10	15
Geosciences	10	14	9	4	7	12	10	6	10	3
German	9	6	4	5	8	10	4	8	10	7
Hebrew Studies	1			1	3		1	1	1	3
History	58	58	44	52	45	49	49	73	70	87
Individualized Major							1			
International Studies	27	30	20	33	14	21	21	26	22	30
Italian	4		2		1	3	2	1	1	5
Journalism & Mass Com	68	68	67	89	98	93	152	159	149	166
Law Studies					1					
Linguistics	3	4	5	6	6	11	3	12	9	12
Mathematics	12	10	5	8	11	8	8	10	7	13
No Major			1		1		1	6	3	3
Philosophy	13	16	16	21	14	17	6	15	22	27
Physics	3	3	2	1	3	5	6	4	4	3
Political Science	49	52	29	45	46	41	56	66	78	67
Pre Law										5
Pre Medicine										4
Pre Optometry										2
Pre Pharmacy										1
Psychology	115	102	110	122	103	152	135	160	130	161

These numbers reflect the semester the degree was earned, not the semester the degree was posted; therefore numbers can change with each edition of the factbook.

University of Wisconsin--Milwaukee

**Degrees By Major Within Academic Group**

**Bachelors**

		1996-97	1997-98	1998-99	1999-00	2000-01	2001-02	2002-03	2003-04	2004-05	2005-06
	Russian	2	6	1	1	2	2		1		
	Sociology	44	45	55	64	53	58	66	73	63	79
	Spanish	36	27	22	26	25	15	17	18	15	23
	Two Dept Major	10	7	10	13	6	6	6		2	3
	Undecided	6	10	6	4		4	2			
	Women's Studies										6
	Zoology	3									
	<b>Total</b>	<b>833</b>	<b>818</b>	<b>831</b>	<b>849</b>	<b>865</b>	<b>961</b>	<b>1,025</b>	<b>1,116</b>	<b>1,159</b>	<b>1,253</b>
NURS	Nursing	105	129	95	100	113	122	89	183	146	145
	Nursing Accelerated							43	37	42	45
	Nursing Collab Parkside										22
	Nursing Collaborative	4	4	3	5	6	6	8	9	12	6
	Parkside Nursing	28	21	31	28	27	11	20	20	24	
	<b>Total</b>	<b>137</b>	<b>154</b>	<b>129</b>	<b>133</b>	<b>146</b>	<b>139</b>	<b>160</b>	<b>249</b>	<b>224</b>	<b>218</b>
SARUP	Architectural Studies	84	100	118	110	124	116	119	119	102	91
	<b>Total</b>	<b>84</b>	<b>100</b>	<b>118</b>	<b>110</b>	<b>124</b>	<b>116</b>	<b>119</b>	<b>119</b>	<b>102</b>	<b>91</b>
SOIS	Information Resources			1	6	22	35	55	43	53	36
	<b>Total</b>			<b>1</b>	<b>6</b>	<b>22</b>	<b>35</b>	<b>55</b>	<b>43</b>	<b>53</b>	<b>36</b>
SPPM	Global Studies										2
	<b>Total</b>										<b>2</b>
SW	Criminal Justice	126	108	119	112	120	121	117	101	126	127
	Social Work	101	85	65	82	74	65	74	51	61	77
	<b>Total</b>	<b>227</b>	<b>193</b>	<b>184</b>	<b>194</b>	<b>194</b>	<b>186</b>	<b>191</b>	<b>152</b>	<b>187</b>	<b>204</b>

**Doctors**

		1996-97	1997-98	1998-99	1999-00	2000-01	2001-02	2002-03	2003-04	2004-05	2005-06
BUS	Management Science	5	9	4	2	6	4	1	2	4	7
	<b>Total</b>	<b>5</b>	<b>9</b>	<b>4</b>	<b>2</b>	<b>6</b>	<b>4</b>	<b>1</b>	<b>2</b>	<b>4</b>	<b>7</b>
CEAS	Engineering	9	11	7	8	17	5	8	9	9	12
	<b>Total</b>	<b>9</b>	<b>11</b>	<b>7</b>	<b>8</b>	<b>17</b>	<b>5</b>	<b>8</b>	<b>9</b>	<b>9</b>	<b>12</b>
EDUC	Urban Education	13	10	15	15	12	22	9	18	16	14
	<b>Total</b>	<b>13</b>	<b>10</b>	<b>15</b>	<b>15</b>	<b>12</b>	<b>22</b>	<b>9</b>	<b>18</b>	<b>16</b>	<b>14</b>
L&S	Anthropology	2	5	3		4	2	2		6	5
	Biological Sci	5	5	5	2	4	5	4	4	5	3
	Chemistry	8	6	13	10	6	7	6	2	7	4
	Economics	2	6	11	1	9	5	10	2	8	9
	English	16	14	12	17	15	11	13	11	7	12
	Geography	3	1	5	1			3	1	3	2
	Geosciences	1		1		2		1			
	Mathematics	4	9	7	3	5	3	4		2	3
	Physics	5	2	3	4	2	3	3	3	4	4
	Political Science	2	1	4	1	1	5		2	3	
	Psychology	7	9	9	4	6	8	11	5	4	10

These numbers reflect the semester the degree was earned, not the semester the degree was posted; therefore numbers can change with each edition of the factbook.

# University of Wisconsin--Milwaukee

## Degrees By Major Within Academic Group

### Doctors

		1996-97	1997-98	1998-99	1999-00	2000-01	2001-02	2002-03	2003-04	2004-05	2005-06
	Urban Social Institutions		1								
	Urban Studies	8	3	2	4		1	1	7	1	5
	Total	63	62	75	47	54	50	58	37	50	57
NURS	Nursing	6	8	8	2	4	4	7	3	6	4
	Total	6	8	8	2	4	4	7	3	6	4
SARUP	Architecture	4	1	1	1	2	3	2	1	3	3
	Total	4	1	1	1	2	3	2	1	3	3
SPPM	Multidisciplinary	1	2		2	2		1	1	1	
	Total	1	2		2	2		1	1	1	

### Education Specialists

		2001-02	2002-03	2003-04	2004-05	2005-06
EDUC	School Psychology	12	5	8	7	10
	Total	12	5	8	7	10

### Masters

		1996-97	1997-98	1998-99	1999-00	2000-01	2001-02	2002-03	2003-04	2004-05	2005-06
ARTS	Art	11	14	8	9	5	4	11	13	8	9
	Art Education	6	3	4	2	13	1				
	Arts										8
	Dance			1	5	1	5	8	10	7	3
	Film	2	4	4	3	5	2	4	8	8	5
	Music	13	7	3	8	13	13	14	18	20	24
	Theatre		16		9		6	1			
	Total	32	44	20	36	37	31	38	49	43	49
BUS	Business Management	69	85	109	97	96	126	95	129	104	112
	Executive MBA	38	36	42	34	37	39	33	29	17	50
	MBA	76	82	82	91	74	99	77	90	123	131
	Total	183	203	233	222	207	264	205	248	244	293
CEAS	Computer Science	11	13	13	24	19	13	22	27	24	17
	Engineering	44	33	35	45	37	24	50	50	51	44
	Total	55	46	48	69	56	37	72	77	75	61
CHS	Clinical Lab Sci	2	3	5	5	6	4	4	4	4	1
	Comm Sci & Dis	17	25	24	24	25	15	22	18	20	17
	Kinesiology	2	3	7	1	3	6	9	10	5	9
	Occupational Therapy			1	6	10	11	23	7	12	24
	Total	21	31	37	36	44	36	58	39	41	51
EDUC	Admn Ldrshp & Superv	55	57	42	76	42	48	44	58	40	43
	Cult Found of Education	9	9	11	10	7	7	1	13	9	6
	Curriculum & Instruction	55	60	64	66	75	99	123	120	79	44
	Educ Rehabil Cnslng	9	12	8	3		1	1			
	Educational Psychology	67	80	91	108	98	115	91	89	97	66

These numbers reflect the semester the degree was earned, not the semester the degree was posted; therefore numbers can change with each edition of the factbook.

University of Wisconsin--Milwaukee

**Degrees By Major Within Academic Group**

**Masters**

		1996-97	1997-98	1998-99	1999-00	2000-01	2001-02	2002-03	2003-04	2004-05	2005-06
	Exceptional Education	7	8	7	7	10	13	20	22	21	21
	Total	202	226	223	270	232	283	280	302	246	180
L&S	Anthropology	12	13	12	5	5	11	7	13	9	12
	Art History	9	6	9	9	1	4	7	6	7	4
	Biological Sci	7	9	9	14	8	10	9	12	8	10
	Chemistry	6	5	2	5	2	3	1	3	1	4
	Communication	10	9	5	16	14	10	15	16	20	12
	Economics	10	18	12	11	15	13	17	25	30	23
	English	13	21	22	26	18	31	21	22	15	21
	Foreign Language & Lit	14	9	11	13	12	10	18	23	28	39
	Geography	4	3	3	3	3	4	7	2	2	6
	Geosciences	12	1	1	8	3	1	2	4	3	5
	History	27	22	20	19	19	18	17	18	24	20
	Human Res & Lab Rel		6	13	11	17	14	19	25	21	20
	Industrial & Labor Rel	10	5	4	6	1	1		3	1	
	Liberal Studies						1	1	5	13	9
	Mass Communication	13	2	7	10	4	5	10	7	7	11
	Mathematics	15	3	6	13	12	21	17	11	23	21
	Philosophy	8	4	5	8	8	2	6	11	13	14
	Physics	4	6	2	5	4	3	4	3	2	2
	Political Science	4	6	5	5	3	3	3	6	7	7
	Psychology	5	6	13	6	5	8	8	13	10	20
	Public Administration	7	8	8	5	6	12	12	7	14	8
	Sociology	6	5	7	3	1	1	3	8	8	16
	Urban Studies	5	1	4	5	4	5	3	3	6	5
	Total	201	168	180	206	165	191	207	246	272	289
NURS	Nursing	45	32	53	33	35	24	15	20	29	31
	Total	45	32	53	33	35	24	15	20	29	31
SARUP	Architecture	46	40	42	48	40	35	42	42	40	41
	Urban Planning	21	30	16	12	15	11	13	12	17	23
	Total	67	70	58	60	55	46	55	54	57	64
SOIS	Library & Informtn Sci	98	94	122	87	92	96	107	129	106	122
	Total	98	94	122	87	92	96	107	129	106	122
SW	Criminal Justice	15	13	19	16	18	9	9	14	10	13
	Social Work	134	133	146	171	129	147	105	152	108	108
	Total	149	146	165	187	147	156	114	166	118	121

These numbers reflect the semester the degree was earned, not the semester the degree was posted; therefore numbers can change with each edition of the factbook.

## Financial Aid

Grants and loans have become increasingly important to students as resources to help finance educational costs. Each semester the Financial Aid Department at UWM assists thousands of students in obtaining funding from the grant or loan programs offered on campus.

Some grants or loans are specifically aimed at particular groups, such as minorities, the disadvantaged, or the disabled. There are also programs aimed at reaching students within a particular school or college. This summary does not include all of the different programs available to our students, but it does cover the more widely used ones. To receive more information about the availability of grants or loans, please contact the UWM Financial Aid Department.

**Federal Pell Grant** - Available to students while pursuing their first undergraduate degree. The grants range from \$400 to \$4,050 annually.

**Federal Supplementary Educational Opportunity Grant (SEOG)** - Available to the student until the undergraduate degree is received. These grants range from \$500 to \$1,100 annually.

**Wisconsin Higher Educational Grant** - Available only to undergraduate residents of Wisconsin. Grants range from \$500 to \$2,600 annually.

**Federal Family Education Loan** (subsidized and unsubsidized) - Annual limits are as follows: freshmen may receive up to \$3,500 annually; sophomores up to \$4,500; juniors and seniors up to \$5,500. Undergraduates may receive up to \$23,000 cumulatively. Graduate students may receive up to \$20,500 annually and \$138,500 cumulatively. Borrowers must begin repayment six months after leaving college. Interest rates are variable and begin to accrue for subsidized loans at this time. For unsubsidized loans, interest accrues or borrowers pay the interest while in school.

**Federal Perkins Loan** - These loans may total up to \$20,000 for undergraduate education, and \$40,000 for combined undergraduate and graduate education. Repayment and 5% interest are deferred until nine months after ceasing to be enrolled at least half-time.

**Sources of Financial Aid**

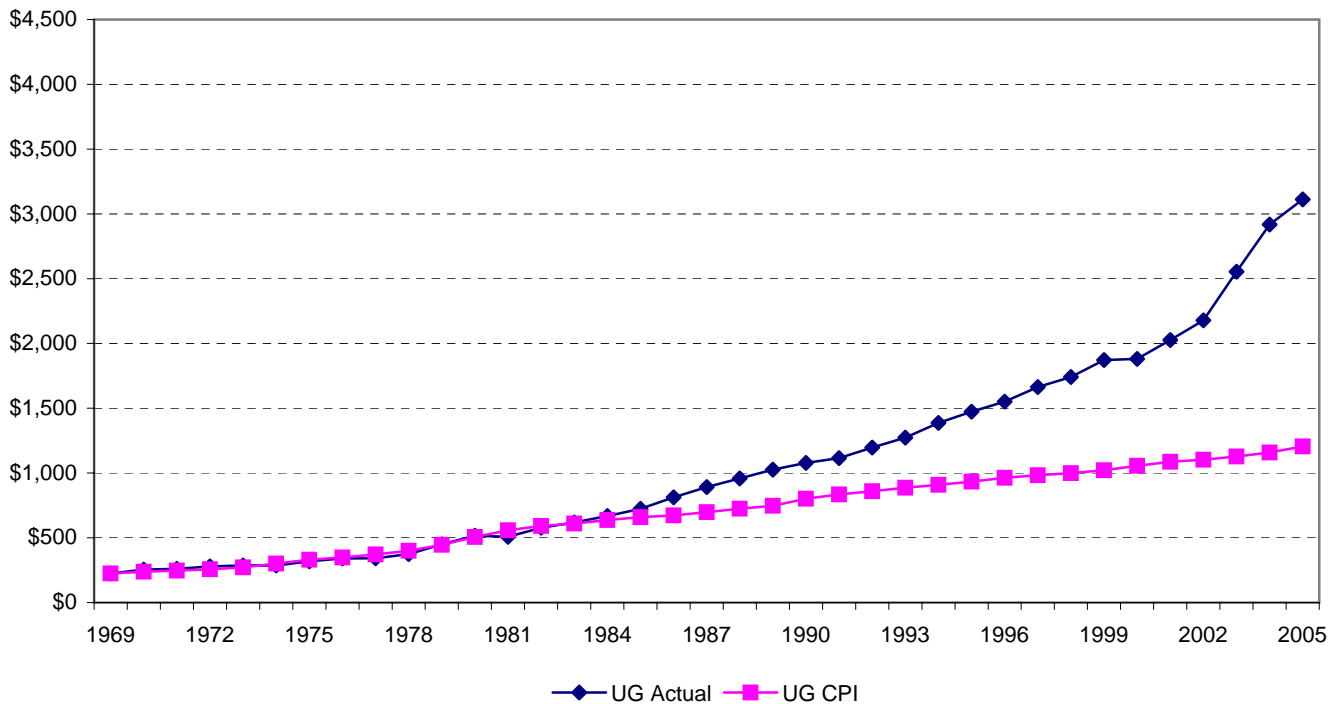
Year	FEDERAL PELL GRANTS		FEDERAL SEOG*		FFEL/DL PROGRAM LOANS**		FEDERAL PERKINS LOANS	
	Students	Amount	Students	Amount	Students	Amount	Students	Amount
1976-77	2,950	2,410,207	1,756	1,448,892	804	1,103,443	1,345	1,298,338
1977-78	3,069	2,243,768	1,992	1,342,926	1,130	1,658,812	935	836,895
1978-79	2,826	2,297,972	1,878	1,491,422	1,434	2,208,072	1,411	1,333,292
1979-80	3,719	3,247,590	1,471	1,487,190	1,994	3,758,837	1,652	1,596,776
1980-81	3,195	3,129,224	1,447	1,447,979	4,264	10,318,487	806	942,308
1981-82	3,765	3,184,925	1,462	1,481,192	3,997	12,204,510	1,097	1,136,735
1982-83	3,603	3,159,177	1,721	1,415,310	4,774	9,710,206	863	892,485
1983-84	3,300	3,159,177	1,706	1,477,306	4,500	9,500,000	875	924,178
1984-85	4,140	4,900,000	2,280	1,700,000	6,431	13,837,646	1,393	1,200,000
1985-86	3,890	5,339,807	1,948	1,523,270	5,719	13,018,877	1,410	1,231,848
1986-87	3,534	5,052,455	1,729	1,438,221	4,218	8,791,804	1,480	1,837,337
1987-88	3,769	5,196,618	1,661	1,531,763	4,851	12,168,917	1,158	1,861,374
1988-89	4,557	6,622,095	1,900	1,454,435	4,344	9,840,996	1,083	1,640,534
1989-90	4,583	6,818,850	1,960	1,549,993	4,777	11,491,421	793	1,497,227
1990-91	4,457	6,783,739	1,877	1,498,538	5,203	13,112,346	914	1,566,897
1991-92	5,043	7,930,891	1,993	1,556,126	5,864	15,377,999	1,066	1,938,354
1992-93	4,997	8,070,295	2,082	1,628,780	6,093	16,474,238	1,006	1,693,229
1993-94	3,971	5,670,630	2,297	1,674,621	7,376	24,312,212	1,093	1,892,852
1994-95	3,807	5,605,968	2,317	1,692,084	7,652	28,528,449	1,200	2,056,407
1995-96	3,668	5,287,166	2,321	1,656,848	8,994	30,432,013	991	1,817,489
1996-97	3,486	5,207,374	2,313	1,719,636	8,626	42,802,913	1,359	2,556,844
1997-98	3,589	5,806,700	2,119	1,739,531	9,233	47,263,176	1,119	2,042,661
1998-99	3,881	6,495,637	2,291	1,655,200	9,505	46,177,107	784	1,364,138
1999-00	3,756	6,841,118	2,524	1,835,806	10,815	46,430,765	1,912	3,048,772
2000-01	3,888	7,686,994	2,432	1,812,909	14,186	48,304,540	1,806	2,765,392
2001-02	4,170	9,439,808	2,075	1,917,753	11,250	57,068,796	1,669	2,677,726
2002-03	4,481	10,972,151	2,026	1,791,582	12,353	66,549,316	2,011	3,375,408
2003-04	4,992	12,448,515	1,864	1,721,982	13,618	78,178,064	1,443	2,966,314
2004-05	5,171	12,716,949	2,025	1,836,652	13,916	85,887,281	1,635	3,497,787
2005-06	5,074	12,595,005	1,826	1,672,294	14,594	92,614,925	1,320	3,371,033

\*SEOG Federal Supplemental Education Opportunity Grants.

\*\*FFEL/DL: During the period of 1995-96 through 2004-05, the University participated in the Federal Direct Loan (DL) Program. All other period information represents Federal Family Education Loan (FFEL) Program participation.

### Semester Tuition and Fees for Full-Time Resident Undergraduate Students

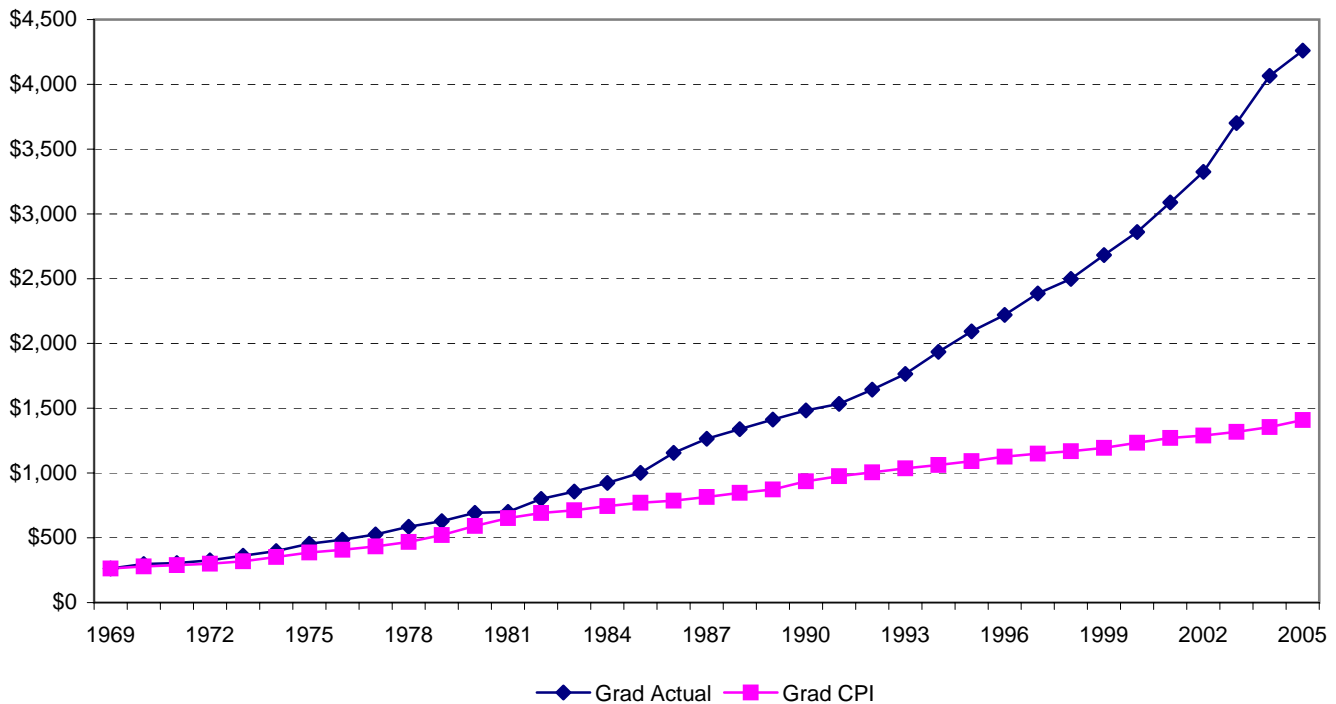
	(1) Actual Resident	Yr to Yr % Chg	(2) CPI Adj Resident	(3) State Support % of Costs		(1) Actual Resident	Yr to Yr % Chg	(2) CPI Adj Resident	(3) State Support % of Costs
Fall 1969	\$225		\$225		Fall 1987	\$892	9.7%	\$698	63.3%
Fall 1970	\$254	12.9%	\$239		Fall 1988	\$959	7.5%	\$725	64.3%
Fall 1971	\$261	2.8%	\$248		Fall 1989	\$1,027	7.1%	\$747	65.0%
Fall 1972	\$279	6.9%	\$257		Fall 1990	\$1,078	5.0%	\$801	65.5%
Fall 1973	\$287	2.7%	\$272		Fall 1991	\$1,116	3.5%	\$835	65.4%
Fall 1974	\$287	0.0%	\$302		Fall 1992	\$1,197	7.3%	\$860	64.5%
Fall 1975	\$319	11.3%	\$331		Fall 1993	\$1,273	6.4%	\$887	65.5%
Fall 1976	\$341	6.9%	\$349		Fall 1994	\$1,386	8.9%	\$909	65.1%
Fall 1977	\$342	0.3%	\$371		Fall 1995	\$1,474	6.3%	\$934	64.4%
Fall 1978	\$374	9.4%	\$401		Fall 1996	\$1,551	5.3%	\$963	62.6%
Fall 1979	\$449	20.1%	\$446		Fall 1997	\$1,664	7.3%	\$983	61.8%
Fall 1980	\$516	14.9%	\$506		Fall 1998	\$1,741	4.6%	\$999	62.2%
Fall 1981	\$508	-1.5%	\$558	70.4%	Fall 1999	\$1,872	7.5%	\$1,022	60.8%
Fall 1982	\$577	13.6%	\$592	67.2%	Fall 2000	\$1,880	0.5%	\$1,055	61.2%
Fall 1983	\$618	7.1%	\$610	67.5%	Fall 2001	\$2,027	7.8%	\$1,087	60.3%
Fall 1984	\$668	8.1%	\$637	65.3%	Fall 2002	\$2,178	7.4%	\$1,103	59.4%
Fall 1985	\$724	8.4%	\$659	66.0%	Fall 2003	\$2,554	17.3%	\$1,127	51.3%
Fall 1986	\$813	12.3%	\$673	63.7%	Fall 2004	\$2,918	14.3%	\$1,159	45.0%
					Fall 2005	\$3,112	6.7%	\$1,206	42.7%



(1) Non-graduate fees are for 12 to 18 credits per semester.  
 (2) Adjusted for consumer price index. Base year is 1969.  
 (3) Percent of total costs paid from state support. The remaining costs are paid by tuition.

### Semester Tuition and Fees for Full-Time Resident Graduate Students

	(1) Actual Resident	Yr to Yr % Chg	(2) CPI Adj Resident	(3) State Support % of Costs		(1) Actual Resident	Yr to Yr % Chg	(2) CPI Adj Resident	(3) State Support % of Costs
Fall 1969	\$263		\$263		Fall 1987	\$1,265	9.5%	\$815	63.3%
Fall 1970	\$297	12.9%	\$279		Fall 1988	\$1,339	5.8%	\$847	64.3%
Fall 1971	\$305	2.7%	\$289		Fall 1989	\$1,412	5.5%	\$873	65.0%
Fall 1972	\$326	6.9%	\$300		Fall 1990	\$1,483	5.0%	\$936	65.5%
Fall 1973	\$362	10.9%	\$318		Fall 1991	\$1,534	3.4%	\$976	65.4%
Fall 1974	\$398	10.1%	\$352		Fall 1992	\$1,643	7.1%	\$1,005	64.5%
Fall 1975	\$454	14.1%	\$387		Fall 1993	\$1,764	7.4%	\$1,036	65.5%
Fall 1976	\$486	7.0%	\$408		Fall 1994	\$1,935	9.7%	\$1,063	65.1%
Fall 1977	\$526	8.3%	\$434		Fall 1995	\$2,093	8.2%	\$1,091	64.4%
Fall 1978	\$585	11.3%	\$468		Fall 1996	\$2,220	6.1%	\$1,126	62.6%
Fall 1979	\$629	7.4%	\$521		Fall 1997	\$2,386	7.5%	\$1,149	61.8%
Fall 1980	\$693	10.2%	\$592		Fall 1998	\$2,498	4.7%	\$1,168	62.2%
Fall 1981	\$701	1.1%	\$652	70.4%	Fall 1999	\$2,682	7.4%	\$1,194	60.8%
Fall 1982	\$800	14.3%	\$692	67.2%	Fall 2000	\$2,859	6.6%	\$1,233	61.2%
Fall 1983	\$857	7.0%	\$713	67.5%	Fall 2001	\$3,089	8.0%	\$1,270	60.3%
Fall 1984	\$923	7.7%	\$744	65.3%	Fall 2002	\$3,325	7.6%	\$1,289	59.4%
Fall 1985	\$1,002	8.5%	\$771	66.0%	Fall 2003	\$3,701	11.3%	\$1,318	51.3%
Fall 1986	\$1,156	15.4%	\$786	63.7%	Fall 2004	\$4,066	9.8%	\$1,354	45.0%
					Fall 2005	\$4,260	4.8%	\$1,409	42.7%

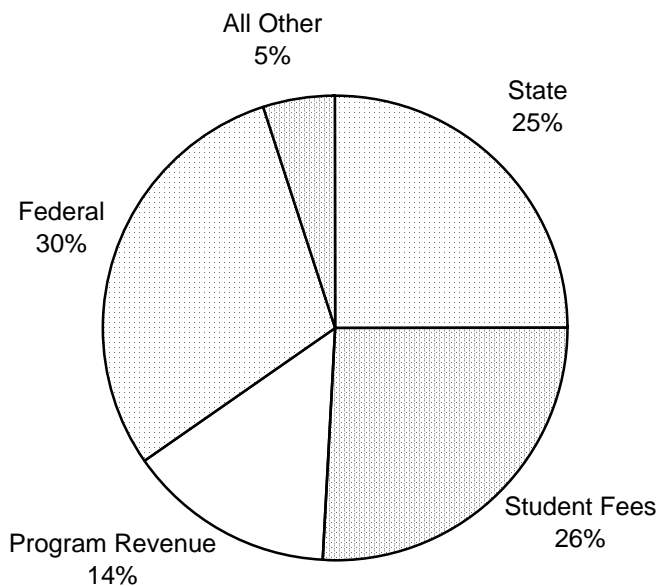


- (1) Non-graduate fees are for 12 to 18 credits per semester.
- (2) Adjusted for consumer price index. Base year is 1969.
- (3) Percent of total costs paid from state support. The remaining costs are paid by tuition.

University of Wisconsin--Milwaukee

2005-06

Source of Funds - All Funds

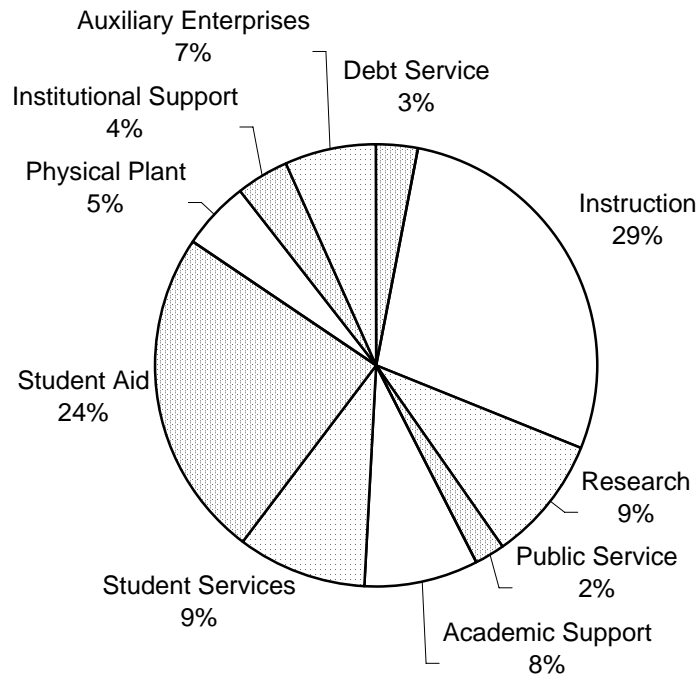


	2004-05	2005-06	Change Dollars	Change Percent	2005-06 % of Total
<b>State General Purpose Revenue</b>					
General Program (Note 1)	\$95,353,800	\$93,265,900	(\$2,087,900)	-2.2%	19.0%
Other State Funds (Note 2)	22,071,200	29,957,400	7,886,200	35.7%	6.1%
	117,425,000	123,223,300	5,798,300	4.9%	25.1%
<b>Operations Receipts</b>					
Student Fee Income (Note 3)	116,586,500	125,908,700	9,322,200	8.0%	25.7%
Program Revenue Funds (Note 4)	70,927,700	71,034,200	106,500	0.2%	14.5%
Other Receipts	6,171,500	5,569,000	(602,500)	-9.8%	1.1%
	193,685,700	202,511,900	8,826,200	4.6%	41.3%
<b>Federal Aid, Grants &amp; Contracts</b>					
Grants & Contracts	32,273,100	35,500,400	3,227,300	10.0%	7.2%
Student Aid	105,228,300	110,459,500	5,231,200	5.0%	22.5%
	137,501,400	145,959,900	8,458,500	6.2%	29.8%
<b>Gift Fund Income</b>					
	16,831,300	18,649,200	1,817,900	10.8%	3.8%
	154,332,700	164,609,100	10,276,400	6.7%	33.6%
<b>Total</b>	\$465,443,400	\$490,344,300	\$24,900,900	5.3%	100.0%

University of Wisconsin--Milwaukee

2005-06

Use of Funds By Program - All Funds

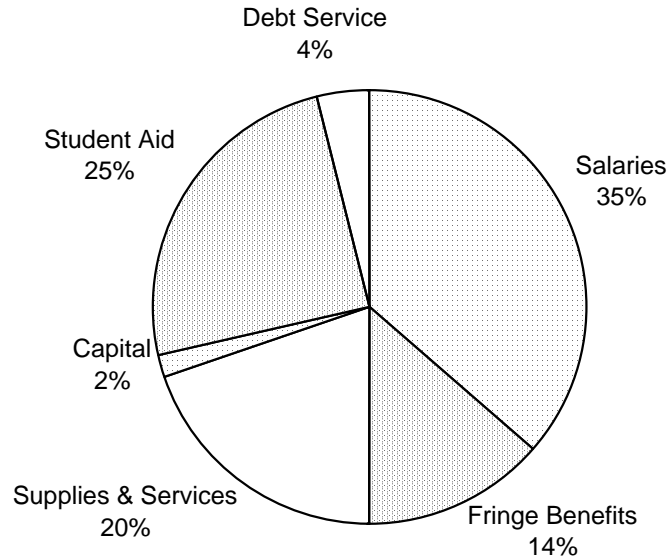


	2004-05	2005-06	Change Dollars	Change Percent	2005-06 % of Total
<b>Primary Programs</b>					
Instruction	\$131,165,500	\$137,739,300	\$6,573,800	5.0%	28.1%
Research	42,047,000	45,323,500	3,276,500	7.8%	9.2%
Public Service	9,654,200	10,338,200	684,000	7.1%	2.1%
	182,866,700	193,401,000	10,534,300	5.8%	39.4%
<b>Support Programs</b>					
Academic Support	40,782,800	41,415,600	632,800	1.6%	8.4%
Student Services	45,718,600	45,479,400	(239,200)	-0.5%	9.3%
Student Aid	113,437,900	118,893,000	5,455,100	4.8%	24.2%
Physical Plant	20,682,700	24,773,600	4,090,900	19.8%	5.1%
Institutional Support	18,370,800	18,642,300	271,500	1.5%	3.8%
	238,992,800	249,203,900	10,211,100	4.3%	50.8%
<b>Education &amp; General Expenditures</b>					
	421,859,500	442,604,900	20,745,400	4.9%	90.3%
Auxiliary Enterprises					
	31,078,400	32,704,300	1,625,900	5.2%	6.7%
Debt Service on Academic Bldgs. (Note 2)					
	12,505,500	15,035,100	2,529,600	20.2%	3.1%
<b>Total</b>	<b>\$465,443,400</b>	<b>\$490,344,300</b>	<b>\$24,900,900</b>	<b>5.3%</b>	<b>100.0%</b>

University of Wisconsin--Milwaukee

2005-06

**Use of Funds By Major Expenditure - All Funds**

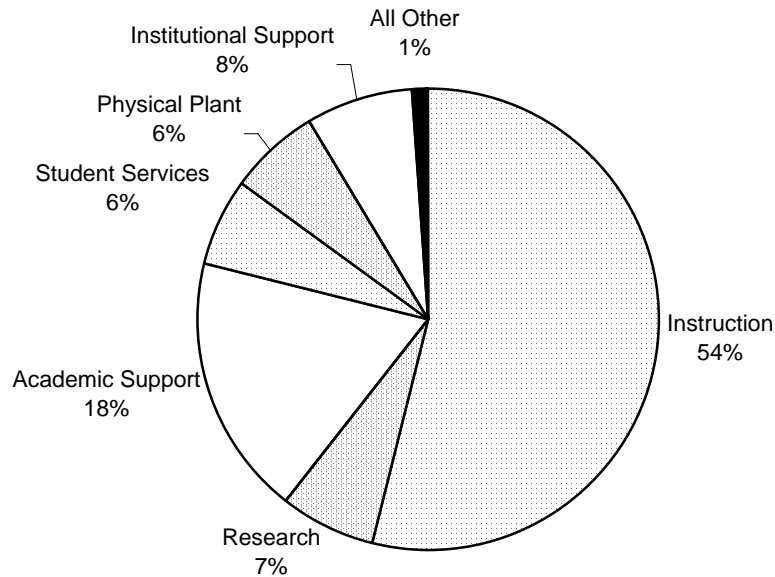


	2004-05	2005-06	Change Dollars	Change Percent	2005-06 % of Total
<b>Staff Compensation</b>					
Unclassified Staff Salaries	\$137,610,800	\$131,453,700	(\$6,157,100)	-4.5%	26.8%
Classified Staff Salaries	45,856,600	46,889,700	1,033,100	2.3%	9.6%
Fringe Benefits	58,143,000	66,438,600	8,295,600	14.3%	13.5%
	241,610,400	244,782,000	3,171,600	1.3%	49.9%
<b>Supplies, Services &amp; Sales Credits</b>					
Supplies & Services	106,079,200	122,584,600	16,505,400	15.6%	25.0%
Sales Credits	(25,089,900)	(25,874,000)	(784,100)	3.1%	-5.3%
	80,989,300	96,710,600	15,721,300	19.4%	19.7%
<b>Capital</b>	11,208,600	8,389,800	(2,818,800)	-25.1%	1.7%
<b>Student Aid</b>	115,164,700	120,743,800	5,579,100	4.8%	24.6%
<b>Municipal Services</b>	689,500	973,700	284,200	41.2%	0.2%
<b>Debt Service</b>					
On Academic Facilities (Note 2)	12,505,500	15,035,100	2,529,600	20.2%	3.1%
On Auxiliary Facilities (Note 4)	3,275,400	3,709,300	433,900	13.2%	0.8%
	15,780,900	18,744,400	2,963,500	18.8%	3.8%
<b>Total</b>	<b>\$465,443,400</b>	<b>\$490,344,300</b>	<b>\$24,900,900</b>	<b>5.3%</b>	<b>100.0%</b>

University of Wisconsin - Milwaukee

2005-06

Use of Funds By Program - State Program Funds



	2004-05	2005-06	Change Dollars	Change Percent	2005-06 % of Total
<b>Primary Programs</b>					
Instruction	\$113,613,300	\$118,300,000	\$4,686,700	4.1%	53.9%
Research	13,278,400	14,794,200	1,515,800	11.4%	6.7%
Public Service	2,268,500	2,180,600	(87,900)	-3.9%	1.0%
	129,160,200	135,274,800	6,114,600	4.7%	61.6%
<b>Support Programs</b>					
Academic Support	39,358,800	39,947,100	588,300	1.5%	18.2%
Student Services	13,543,600	13,898,600	355,000	2.6%	6.3%
Student Aid	40,100	40,100	0	0.0%	0.0%
Physical Plant	13,921,800	13,923,100	1,300	0.0%	6.3%
Institutional Support	16,397,500	16,572,600	175,100	1.1%	7.5%
	83,261,800	84,381,500	1,119,700	1.3%	38.4%
<b>Total</b>	<b>\$212,422,000</b>	<b>\$219,656,300</b>	<b>\$7,234,300</b>	<b>3.4%</b>	<b>100.0%</b>

University of Wisconsin--Milwaukee

2005-06

State Program Funds By Division and Program

	Division	Total	Instruction	Research	Public Service	Academic Support	Student Services	Student Aid	Physical Plant	Institutional Support
<b>Divisions</b>										
Academic Units		\$130,170,800	\$82,619,100	\$9,701,200	\$1,567,700	\$29,379,800	\$3,995,800	\$0	\$69,000	\$2,838,200
General Educational Admin.	B01	3,528,300	85,800	3,000	0	122,300	0	0	0	3,317,200
Administrative Affairs	B02	16,105,200	171,400	16,700	1,600	366,300	22,400	0	10,617,500	4,909,300
Student Affairs	B03	6,401,300	0	0	70,200	0	6,020,800	40,100	0	270,200
Unit Wide	B98	63,450,700	35,423,700	5,073,500	541,200	10,078,500	3,859,600	0	3,236,500	5,237,700
<b>Total</b>		<b>\$219,656,300</b>	<b>\$118,300,000</b>	<b>\$14,794,400</b>	<b>\$2,180,700</b>	<b>\$39,946,900</b>	<b>\$13,898,600</b>	<b>\$40,100</b>	<b>\$13,923,000</b>	<b>\$16,572,600</b>
<b>Academic Units</b>										
Academic Affairs - Vice Chanc.	B05	4,249,200	651,600	2,500	0	615,300	593,800	0	0	2,386,000
Milwaukee Idea	B06	2,988,500	1,666,000	547,700	416,100	358,700	0	0	0	0
Health Sciences	B10	5,312,800	4,427,500	139,300	0	746,000	0	0	0	0
Architecture & Urban Planning	B11	3,322,500	2,591,100	22,400	0	709,000	0	0	0	0
Business Administration	B12	11,190,700	9,100,700	288,200	0	1,801,800	0	0	0	0
Education	B17	8,122,300	6,436,700	205,200	0	1,480,400	0	0	0	0
Engineering & Applied Science	B19	8,862,000	7,042,000	1,022,800	0	675,200	122,000	0	0	0
Arts	B21	9,492,100	7,722,700	0	425,600	1,343,800	0	0	0	0
Graduate School	B34	5,411,400	(60,000)	4,305,400	0	709,300	456,700	0	0	0
Information & Media Tech.	B40	8,282,100	646,600	343,500	204,500	4,479,100	2,086,800	0	69,000	452,600
Letters & Science	B48	41,760,500	35,985,600	2,053,300	288,500	2,696,600	736,500	0	0	0
Library	B50	7,511,500	0	0	0	7,511,500	0	0	0	0
Information Studies	B51	1,174,000	947,700	1,600	0	224,700	0	0	0	0
Nursing	B65	6,321,600	4,792,300	388,700	28,000	1,112,600	0	0	0	0
Social Welfare	B86	3,004,200	2,112,900	380,600	0	510,700	0	0	0	0
Continuing Education	B90	720,400	0	0	205,000	515,800	0	0	0	(400)
Academic Support	B97	2,445,000	(1,444,300)	0	0	3,889,300	0	0	0	0
		130,170,800	82,619,100	9,701,200	1,567,700	29,379,800	3,995,800	0	69,000	2,838,200

University of Wisconsin--Milwaukee

**Ranked Faculty, Academic Staff and Classified Staff  
Paid from All Funds and Activities**

October	Appointment Type	Headcount	Full Time	Part Time	FTE
1998	Ranked Faculty	708	640	68	677.80
	Academic Staff	1,409	671	738	963.06
	Classified Staff	1,232	834	398	1,064.95
	Total	3,349	2,145	1,204	2,705.81
1999	Ranked Faculty	707	637	70	673.39
	Academic Staff	1,437	719	718	998.46
	Classified Staff	1,211	845	366	1,051.68
	Total	3,355	2,201	1,154	2,723.52
2000	Ranked Faculty	708	636	72	674.04
	Academic Staff	1,350	849	501	1,083.42
	Classified Staff	1,237	854	383	1,073.22
	Total	3,295	2,339	956	2,830.68
2001	Ranked Faculty	746	679	67	714.10
	Academic Staff	1,419	940	479	1,171.43
	Classified Staff	1,237	868	369	1,075.03
	Total	3,402	2,487	915	2,960.55
2002	Ranked Faculty	758	695	63	727.79
	Academic Staff	1,416	937	479	1,169.72
	Classified Staff	1,231	894	337	1,080.82
	Total	3,405	2,526	879	2,978.33
2003	Ranked Faculty	777	717	60	748.52
	Academic Staff	1,431	950	481	1,187.45
	Classified Staff	1,148	885	263	1,030.31
	Total	3,356	2,552	804	2,966.29
2004	Ranked Faculty	794	733	61	766.76
	Academic Staff	1,475	981	494	1,222.41
	Classified Staff	1,136	886	250	1,020.46
	Total	3,405	2,600	805	3,009.62
2005	Ranked Faculty	788	726	62	761.05
	Academic Staff	1,500	1,002	498	1,246.42
	Classified Staff	1,079	871	208	986.27
	Total	3,367	2,599	768	2,993.74

Excludes student employees such as teaching, research and project assistants, as well as student hourly employees. Persons with appointments split across types are counted in the totals for each appointment. This double counting is relatively small and inflates the total headcount by approximately 60.

University of Wisconsin--Milwaukee

**Instructional Staff FTE by School/College**

October	Appointment Type	Health Sciences	Arch & Urban Planning	Business	Education	Engineering	The Arts	Letters & Science	Info Studies	Nursing	Social Welfare	Total
1998	Ranked Faculty	33.08	24.35	47.76	55.20	43.69	22.43	55.10	7.00	0.20	18.63	307.44
	Academic Staff	16.72	7.07	20.39	32.98	18.20	9.32	28.64	5.48	22.60	13.47	174.87
	Teaching Assistants	5.15	7.85	11.74	6.10	21.07	2.58	19.56	0.50	0.97	4.23	79.75
	Total	54.95	39.27	79.89	94.28	82.95	34.33	103.30	12.98	23.77	36.33	562.06
1999	Ranked Faculty	34.21	26.58	42.71	60.63	48.89	64.61	270.66	9.50	31.36	19.72	608.88
	Academic Staff	19.34	4.86	20.96	37.25	8.08	37.17	123.39	4.65	28.16	11.33	295.19
	Teaching Assistants	6.40	6.82	12.28	5.93	25.54	10.56	166.50		1.10	4.48	239.61
	Total	59.95	38.26	75.94	103.81	82.51	112.35	560.55	14.15	60.62	35.53	1,143.67
2000	Ranked Faculty	30.94	21.81	46.41	59.75	46.67	57.26	270.75	11.00	28.04	18.83	591.45
	Academic Staff	19.04	3.79	19.50	22.05	9.35	35.68	151.45	5.20	26.35	7.07	299.47
	Teaching Assistants	6.24	7.14	14.27	6.00	26.42	8.53	175.04	1.00	0.40	3.50	248.53
	Total	56.23	32.73	80.17	87.80	82.44	101.47	597.24	17.20	54.79	29.39	1,139.46
2001	Ranked Faculty	31.05	27.25	55.32	65.08	45.41	59.68	297.61	9.91	25.00	18.13	634.44
	Academic Staff	20.17	2.25	20.48	28.49	12.66	37.45	160.33	3.98	26.84	7.56	320.22
	Teaching Assistants	6.32	6.97	14.32	6.00	27.85	8.96	187.67	1.33	0.90	2.83	263.14
	Total	57.54	36.47	90.12	99.56	85.93	106.09	645.62	15.22	52.74	28.52	1,217.81
2002	Ranked Faculty	31.03	25.77	54.67	70.76	46.41	55.77	304.16	11.75	24.45	15.54	640.30
	Academic Staff	18.24	2.04	18.04	24.28	8.76	33.78	170.11	4.85	29.33	6.38	315.81
	Teaching Assistants	6.50	6.85	14.80	6.28	29.15	11.06	203.14		2.63	2.50	282.91
	Total	55.77	34.65	87.51	101.32	84.32	100.61	677.41	16.60	56.41	24.42	1,239.02
2003	Ranked Faculty	36.70	25.70	51.86	68.59	45.65	60.75	314.64	14.00	24.31	16.10	658.28
	Academic Staff	16.62	2.88	18.91	24.33	9.89	36.06	163.01	5.00	36.03	4.53	317.25
	Teaching Assistants	5.82	7.60	16.03	8.08	23.94	11.64	222.20	0.10	3.98	2.33	301.72
	Total	59.14	36.17	86.79	101.00	79.48	108.45	699.84	19.10	64.32	22.96	1,277.25
2004	Ranked Faculty	37.80	28.48	46.26	67.65	47.00	65.21	330.37	11.62	29.41	16.00	679.78
	Academic Staff	21.12	2.78	19.10	27.00	8.42	43.15	162.22	4.24	38.08	5.00	331.09
	Teaching Assistants	6.99	9.91	16.78	9.06	24.83	11.63	242.93	0.50	4.05	2.33	329.01
	Total	65.91	41.16	82.15	103.71	80.25	119.99	735.51	16.35	71.53	23.33	1,339.89
2005	Ranked Faculty	37.80	26.33	42.22	72.40	47.29	60.32	258.41	12.63	21.49	21.00	599.90
	Academic Staff	22.13	4.69	19.10	25.33	8.27	59.96	170.23	3.69	42.71	6.49	362.59
	Teaching Assistants	7.82	9.09	16.52	9.19	24.25	12.48	212.05		3.57	2.33	297.30
	Total	67.75	40.11	77.84	106.91	79.82	132.76	640.69	16.31	67.77	29.82	1,259.79

Instructional staff includes faculty, academic staff and teaching assistants in credit producing departments paid with state instructional funds (101, 115, 131, 177, 402, activity 2).

**Unclassified and Classified Staff by Appointment Type  
Paid From All Funds and All Activities - October 2005**

		Headcount	Full Time	Part Time	FTE
Unclassified	Faculty Appointments	788	726	62	761.05
	Graduate Assistants	1,065	19	1,046	472.56
	Instructional Academic Staff	561	252	309	388.33
	Limited Appointments	173	137	36	155.46
	Non-Teaching Academic Staff	766	613	153	702.63
	Total	3,353	1,747	1,606	2,480.03
Classified	Blue Collar	302	288	14	296.41
	Clerical Staff	321	283	38	307.89
	LTE	165	22	143	95.25
	Professional	236	224	12	232.23
	Student	2,490	20	2,470	858.41
	Supervisory	55	54	1	54.49
	Total	3,569	891	2,678	1,844.68
Total		6,922	2,638	4,284	4,324.71

Persons with appointments split across types are counted in the totals for each appointment. This double counting is relatively small and inflates the total headcount by approximately 60.

University of Wisconsin--Milwaukee

**Instructional Staff FTE by Curricular Area - October 2005**

		Ranked Faculty	Academic Staff	Teaching Assistants	Total
Health Sciences	Human Movmnt Sci	10.6	6.9	4.3	21.8
	Hca & Info	7.5			7.5
	Clinical Lab Sci	5.1	5.0	1.5	11.6
	Occup Therapy	8.5	4.5	1.5	14.5
	Comm Sci & Dis	6.0	5.8	0.5	12.3
	Total	37.8	22.1	7.8	67.7
Arch & Urban Planning	Architecture	21.9	2.9	6.1	31.0
	Urban Planning	4.4	1.7	3.0	9.2
	Total	26.3	4.7	9.1	40.1
Business	Business	42.2	19.1	16.5	77.8
	Total	42.2	19.1	16.5	77.8
Education	Admin Leadership	10.5	1.0	1.5	13.0
	Epcs	8.0	3.0	0.5	11.5
	Curric & Instr	22.8	13.0	0.5	36.3
	Educ Psychology	21.0	3.8	5.6	30.5
	Exceptional Educ	10.2	4.5	1.0	15.6
	Total	72.4	25.3	9.2	106.9
Engineering	Civil Engineer'g	10.9	2.0	3.0	15.9
	Elec Engr&comp S	20.7	4.8	11.6	37.0
	Ind & Systs Engr	3.6	1.5	1.7	6.7
	Materials	3.9		2.3	6.3
	Mechanical Engr	8.2		5.7	14.0
	Total	47.3	8.3	24.3	79.8
The Arts	Art	18.0	18.0	3.7	39.7
	Film	8.5	11.0	3.5	23.0
	Music	18.7	23.0	5.2	46.9
	Dance	5.5	2.8		8.3
	Theatre	9.6	5.2	0.1	14.8
	Total	60.3	60.0	12.5	132.8
Letters & Science	Honors College		8.8		8.8
	Art History	8.3	0.7	2.2	11.2
	Communication	6.9	4.3	8.3	19.5
	English	30.2	43.0	26.9	100.0
	Fil	11.8	10.0	8.4	30.2
	Ficl	8.0	4.4	4.4	16.8
	Philosophy	10.2	2.6	6.1	18.9
	Spanish & Port	3.0	8.4	5.3	16.7
	Jewish Studies	0.5			0.5
	Clacs		2.5		2.5

Instructional staff includes faculty, academic staff and teaching assistants in credit producing departments paid with state instructional funds (101, 115, 131, 177, 402, activity 2).

University of Wisconsin--Milwaukee

**Instructional Staff FTE by Curricular Area - October 2005**

		Ranked Faculty	Academic Staff	Teaching Assistants	Total
	Women's Studies	0.5	2.8		3.3
	Biological Sci	24.5	9.6	20.3	54.5
	Chemistry&biochm	13.0	7.5	18.4	38.8
	Geosciences	7.5	2.5	4.3	14.3
	Math Sci	19.3	11.8	19.8	50.9
	Physics	11.2	6.3	12.1	29.6
	Africology	4.3	1.7		6.0
	Anthropology	9.8	3.0	7.7	20.4
	Economics	9.8	0.2	10.0	19.9
	Geography	8.9		8.1	17.1
	History	15.5	7.0	7.0	29.5
	Cie		10.5		10.5
	Journ-mass Comm	10.9	8.3	7.0	26.1
	Political Sci	13.3	3.2	7.2	23.7
	Psychology	15.7	2.3	18.6	36.6
	Sociology	12.3	4.7	4.6	21.7
	Usp	2.2	0.5	4.3	7.0
	Mhrlr	0.8	1.6		2.3
	Ais	0.2	1.8	1.3	3.2
	Natural Sciences		0.2		0.2
	<b>Total</b>	<b>258.4</b>	<b>170.2</b>	<b>212.1</b>	<b>640.7</b>
Info Studies	Info Studies	12.6	3.7		16.3
	<b>Total</b>	<b>12.6</b>	<b>3.7</b>		<b>16.3</b>
Nursing	Administration	21.5	42.7	3.6	67.8
	<b>Total</b>	<b>21.5</b>	<b>42.7</b>	<b>3.6</b>	<b>67.8</b>
Social Welfare	Social Work	14.0	6.5	1.5	22.0
	Cj	7.0		0.8	7.8
	<b>Total</b>	<b>21.0</b>	<b>6.5</b>	<b>2.3</b>	<b>29.8</b>

Instructional staff includes faculty, academic staff and teaching assistants in credit producing departments paid with state instructional funds (101, 115, 131, 177, 402, activity 2).

# University of Wisconsin-Milwaukee

## Organization Chart

<b>OFFICE OF THE CHANCELLOR</b>	<b>SENIOR ADVISOR TO THE CHANCELLOR</b>	<b>ASSISTANT TO THE CHANCELLOR</b>
CHANCELLOR Carlos Santiago	David Gilbert SECRETARY OF THE UNIVERSITY Randall Ryder (Interim)	Barbara Puskarich

### ACADEMIC AFFAIRS

<b>PROVOST AND VICE CHANCELLOR</b> Rita Cheng	<b>DEANS AND DIRECTORS</b>
<b>ASSOCIATE VICE CHANCELLORS</b> Ruth Williams Dev Venugopalan Vacant	Architecture & Urban Planning..... Robert Greenstreet Peck School of the Arts..... Wm. Robert Buckner Business Administration..... Kanti Prasad Education..... Alfonzo Thurman Engineering & Applied Science (Interim)..... Al Ghorbanpoor Graduate School..... Abbas Ourmazd Health Sciences..... Randall S. Lambrecht Letters and Science..... G. Richard Meadows Information Studies..... Johannes Britz Nursing..... Sally Lundeen Helen Bader School of Social Welfare..... Stan Stojkovic Continuing Education (Interim)..... Mark Krueger Director, Academic Opportunity Center..... Ruth Russell Director, Equity/Diversity Services..... Anthony Hightower Director, UWM Libraries (Interim)..... Ewa Barczyk Director, Human Resources (Acting)..... Dev Venugopalan Director, Information & Media Technologies (Interim)..... Bruce Maas Director, Roberto Hernandez Center..... Enrique Figueroa Director, Center for Instructional & Professional Development... Anthony Ciccone

### ADMINISTRATIVE AFFAIRS

<b>VICE CHANCELLOR</b> Sherwood Wilson	Business & Financial Services Campus Facilities Planning & Parking Environmental Health, Safety & Risk Management Internal Audit	Legal Affairs Physical Plant Services University Police
---	---	---

### DEVELOPMENT

<b>VICE CHANCELLOR</b> Lucia Petrie	Development of Donor Resources Philanthropic Support	UWM Capital Campaign UWM Foundation
--	---	--

### PARTNERSHIPS & INNOVATION

<b>VICE CHANCELLOR</b> Joan Prince	Chancellor's Boards Liaison Community Advisory Councils Community Calendar Community Events Sponsorships	Community Hot Topic Series Community Partnership Offices SECC Combined Campaign
---------------------------------------	---	---

### RESEARCH

<b>VICE CHANCELLOR</b> Abbas Ourmazd	Graduate School Research Technology Transfer Advanced Analysis Facility	Center for 21st Century Studies Center for Urban Initiatives & Research Laboratory for Surface Studies Great Lakes WATER Institute
---	--	---

### STUDENT AFFAIRS

<b>VICE CHANCELLOR (Interim)</b> Jim Hill	Athletics Auxiliary Services Bookstore Restaurant Operations Union University Housing Career Development Center Children's Center	Dean of Students/Student Life Enrollment Services Financial Aid Klotsche Center Neighborhood Housing Norris Health Center Recruitment & Outreach TRIO and Pre-College Programs
--	--	---

### UNIVERSITY RELATIONS & COMMUNICATIONS

<b>VICE CHANCELLOR</b> Tom Luljak	Alumni Relations Government Relations Marketing Media Relations	Neighborhood Relations Public Records Administration Public Relations Special Events
--------------------------------------	--	---

University of Wisconsin-Milwaukee

**2005-06 Campus Acreage by County**

County	Municipality	Total Acreage	Campus Properties Acres Location	Arboretums Acres Location
<b>MILWAUKEE COUNTY</b>				
	City of Milwaukee Main Campus	93.85	75.04 Kenwood Campus	18.81 Downer Woods
	City of Milwaukee Other	13.95	13.95 Off Campus	
	City of Glendale	7.03	7.03 Univ. Services	
	Village of Shorewood	0.85	0.85 Chancellor's Res.	
	County Total	115.68	96.87	18.81
<b>DODGE COUNTY</b>				
	Town of Hubbard	77.00		33.00 Beech Woods
				44.00 Neda Mines
	Town of Williamstown	30.15		30.15 Beech Woods
	County Total	107.15		107.15
<b>KENOSHA COUNTY</b>				
	Town of Bristol	6.16		6.16 Benedict Prairie
	County Total	6.16		6.16
<b>OZAUKEE COUNTY</b>				
	Town of Saukville	299.10		299.10 Saukville Field Station
	County Total	299.10		299.10
<b>WASHINGTON COUNTY</b>				
	Town of Richfield	7.00		7.00 Thiemann Property
	Town of Erin	20.00		20.00 Prescott Property
	County Total	27.00		27.00
<b>WAUKESHA COUNTY</b>				
	Village of Chenequa	5.00		5.00 Reuss Property
	County Total	5.00		5.00
<b>UNIVERSITY TOTAL</b>		<b>560.09</b>	<b>96.87 Properties</b>	<b>463.22 Arboretums</b>

University of Wisconsin - Milwaukee

**2005-06 General Building Report - Space Inventory Data**

Facility Type	Bldg #	Bldg. Name	Assignable Square Feet	Non-Assignable Square Feet	Total Net Square Feet	Total Gross Square Feet
<b>GENERAL PURPOSE REVENUE - Owned Facilities</b>						
Administrative	1991	Alumni House	10,590	9,348	19,938	23,233
	1930	Chapman Hall	18,110	14,252	32,362	34,806
	1931	Engelmann Hall	51,299	39,524	90,823	102,374
	1990	Hefter Conference Center	7,989	13,418	21,407	24,139
	1976	Mellencamp Hall	27,249	9,613	36,862	40,708
Academic	1933	Architecture and Urban Planning Bldg.	84,993	38,784	123,777	140,378
	1981-A	Art Building	43,312	21,168	64,480	80,415
	1981-L	Arts Center Lecture Hall	3,388	1,514	4,902	8,824
	1983	Bolton Hall	92,723	45,548	138,271	153,085
	1978	Business Administration Building	90,353	52,261	142,614	153,191
	1974	Chemistry Building	83,902	47,970	131,872	149,596
	1993	Continuing Education Plankinton Bldg.	62,582	41,119	103,701	110,000
	1973	Cunningham Hall	63,621	34,251	97,872	110,634
	1957	Curtin Hall	57,837	45,690	103,527	117,189
	1985	EMS Building	141,711	77,901	219,612	247,872
	1919	Enderis Hall	103,923	50,599	154,522	174,683
	1959	Garland Hall	24,964	20,329	45,293	59,261
	1920	Greene Hall	3,176	1,372	4,548	5,298
	1918	Greene Museum		3,019	3,019	3,354
	1936	Holton Hall	29,954	25,407	55,361	60,533
	1921	Johnston Hall	11,954	7,382	19,336	22,317
	1982	Lapham Hall	116,052	123,557	239,609	283,398
	1970	Meir Library	273,583	78,003	351,586	401,346
	1922	Merrill Hall	19,233	17,448	36,681	43,155
	1961	Mitchell Hall	109,225	78,683	187,908	194,488
	1981-M	Music Building	41,258	26,627	67,885	85,709
	1958	Pearse Hall	20,888	7,268	28,156	31,200
	1984	Physics Building	66,060	30,974	97,034	108,329
1923	Sabin Hall	33,403	21,455	54,858	65,027	
1981-T	Theatre Building	28,618	19,801	48,419	66,972	
1989	Zelazo Center	26,878	27,554	54,432	67,193	
Indoor Phys Ed/Rec	1917	Klotsche Center	92,550	20,342	112,892	125,069
Hospital/Health	1926	Norris Health Center	6,965	4,727	11,692	14,180
Research	1999	UWS Grt Lakes Res Facility-Greenhouse	2,373		2,373	2,400
	1901	UWS Grt Lakes Res Facility-Main Bldg.	80,960	25,998	106,958	126,130
	1963	Vogel Hall	7,263	3,359	10,622	12,578
Faculty Housing	1988	Harnischfeger House	4,400	4,400	8,800	10,000
Utility	1947	Electrical Substation West		3,930	3,930	4,066
	1946	Grounds Building	5,937	63	6,000	6,699
	1915	Heating Plant	479	24,991	25,470	27,395
	1914	Kenilworth Building		472,309	472,309	490,502
	1940	Pumping Station		1,200	1,200	1,334
	1948	University Services Building	93,468	103,898	197,366	204,612
Transportation	1928	Bus Shelter		336	336	354

**2005-06 General Building Report - Space Inventory Data**

Facility Type	Bldg #	Bldg. Name	Assignable Square Feet	Non-Assignable Square Feet	Total Net Square Feet	Total Gross Square Feet
Arboretum	1912	Saukville Field Station-Barn	5,700		5,700	5,800
	1925	Saukville Field Station-Garden Shed	576		576	625
	1924	Saukville Field Station-Greenhouse	240		240	250
	1913	Saukville Field Station-Lab Bldg.	2,149	499	2,648	3,165
	1927	Saukville Field Station-Machine Shed	1,878		1,878	2,031
	1903	Saukville Field Station-Mgrs. Res.	1,389	1,282	2,671	4,050
	1911	Saukville Field Station Overnight Qtrs.	1,812	2,376	4,188	4,300
	1929	Saukville Field Station-Research Bldg.	2,320	450	2,770	3,060
	1906	Saukville Field Station-Service Bldg.	1,940	171	2,111	2,398
Day Care	1977	Kunkle Center	31,708	17,968	49,676	59,451
GENERAL PURPOSE REVENUE TOTALS			2,092,935	1,720,138	3,813,073	4,279,156
PROGRAM REVENUE - Owned Facilities						
Student Center/Union	1980	UWM Union	207,713	114,880	322,593	351,632
Parking Structures	1978	Business Administration Parking	93,882	11,056	104,938	108,117
	1995	EMS Parking	58,662	6,028	64,690	69,564
	1937-C	Sandburg Parking	123,837	4,816	128,653	141,823
	1980	UWM Union Parking	150,672	3,768	154,440	156,608
Student Housing	1987	Purin Hall	16,577	2,042	18,619	20,923
	1937-E	Sandburg Hall East	100,728	25,586	126,314	143,780
	1937-N	Sandburg Hall North	112,524	36,067	148,591	176,991
	1937-S	Sandburg Hall South	86,530	29,074	115,604	137,537
	1937-W	Sandburg Hall West	68,471	26,959	95,430	114,921
Food Service	1937-C	Sandburg Hall Commons	46,694	28,728	75,422	82,395
PROGRAM REVENUE TOTALS			1,066,290	289,004	1,355,294	1,504,291
UWM CAMPUS SUMMARY						
GPR TOTALS			2,092,935	1,720,138	3,813,073	4,279,156
PR TOTALS			1,066,290	289,004	1,355,294	1,504,291
UWM OWNED TOTALS			3,159,225	2,009,142	5,168,367	5,783,447

## Glossary

**Academic Group** - School or college, such as College of Health Sciences, or Letters & Science. Also includes AOC (Academic Opportunity Center) and Special Programs.

**Age** - Student ages are computed as of September 1.

**Average Credit Load** - Total credits taken by students divided by the number of students.

**Credit Affinity** - Rows on this report are the schools & colleges which are teaching the credits. Columns are the schools & colleges in which students are enrolled and taking their majors.

**Credits Conveyed** - Degree credits taught by academic groups and subjects.

**Degree Level** - Bachelors, Masters, Doctoral and Education Specialist degrees.

**Degrees Granted** - Number of degrees granted to students by degree level. Some students may earn more than one degree in a single term.

**Ethnicity** - Ethnic background of students. Students who are in the U.S. as non-immigrants are classified as International. All other students are classified by their ethnic background.

**Evening/Weekend Credits** - Credits taught in classes which begin at 4:30 p.m or later on weekdays, or any time on weekends.

**Evening/Weekend Students** - Students who are exclusively enrolled in evening/weekend classes.

**Federal Aid, Grants & Contracts** - Money received from the federal government primarily for research and instruction projects, Perkins Loans, work study, Educational Opportunity Grants, Pell Grants, FFEL Student Loans, and Nursing Loans.

**FTE** - Full time equivalent students. Calculated as undergraduate credits divided by 15, masters, graduate non degree and education specialist credits divided by 12, and doctoral credits divided by 7.

**General Purpose Revenue**- Money received by the state from general tax collections, primarily income, sales and excise taxes, and appropriated for specific uses by the state legislature.

**Gifts & Trust Fund Income** - Money received from non-federal gifts and grants, non-federal loans, and trust funds. Expenditures are restricted according to the terms of the gift, grant, bequest, trust or device to carry out the purposes for which it was made and received.

**Graduate** - Students enrolled in masters, doctoral, education specialist or graduate non-degree programs.

**Graduate Degree Candidates** - Students enrolled in masters, doctoral, or education specialist programs.

**New Freshmen** - Students who are enrolled in college for the first time.

**New Transfers** - Students who have attended another college prior to enrolling at UWM.

**Non Degree Students** - Graduate students who are not enrolled in a degree program.

**Other State Funds** - All state GPR appropriations other than State Program Funds. These include funds for student aid, Advanced Opportunity Programs, energy costs, principal repayment and interest on academic buildings and lease rental payments and Lawton Minority Undergraduate Retention Grant Program.

**Program Revenue** - Revenues collected and paid into a state general fund that are credited by law to an appropriation to finance a specified program (e.g. extension continuing education).

## Glossary

**Special Programs** - Academic groups that are not specific to a particular school or college, such as Global Studies Interdisciplinary, Graduate School, University Special Students, Off-Campus, UWMil.

**Special Students** - Undergraduate students who are not enrolled in a degree program.

**SPPM** - see Special Programs

**State Program Funds** - GPR appropriations that directly relate to program operations. These include funds for General Program Operations, Facilities Maintenance, Laboratory Modernization, Educational Technology, Distinguished Professor, Schools of Business, and Minority & Disadvantaged Student Programs.

**Student Aid** - Payments of grants and loans to students to assist in covering the costs of their education.

**Student Credit Hours** - Credits taken by students which count towards their degree.

**Student Fee Income** - Fees collected from students such as instructional fees for degree credit instruction and non-resident tuition.

**Subject** - A department or sub-department which conveys credits.

**Targeted Populations** - Students whose ethnicity is African American, American Indian, Latino/a, or Southeast Asian.

**Tuition & Fees** - The total of tuition costs plus segregated fees.

**Undergraduate** - Students enrolled working towards a Bachelor's degree, or enrolled as special students.

**Undergraduate Degree Candidates** - Students enrolled working towards a Bachelor's degree.

**Year Level** - A student's year in school, such as Freshman, Sophomore, etc.