



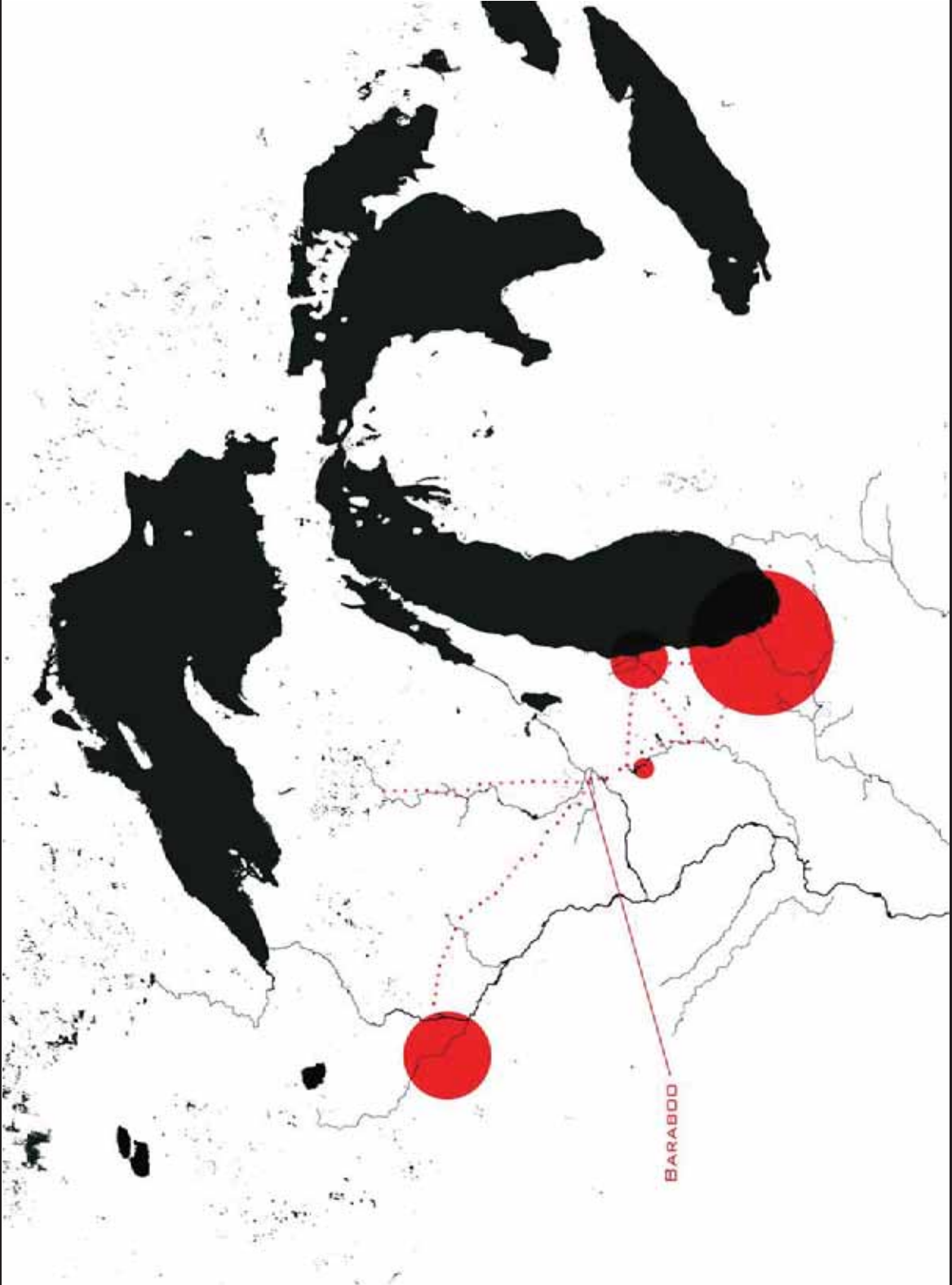
<<< **DRIFT** >>>

This thesis is an alternative traveler / community experience. Programmatically, the project uses a common interest in recreational trails to enhance the relationship between travelers and the community. The architecture supports interaction amongst travelers and brings together the common ground of the travelers and the community.

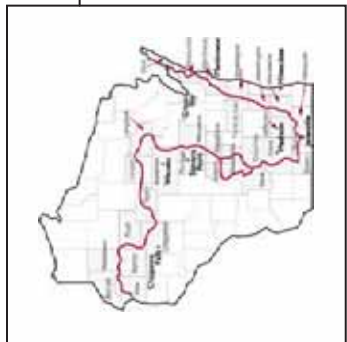
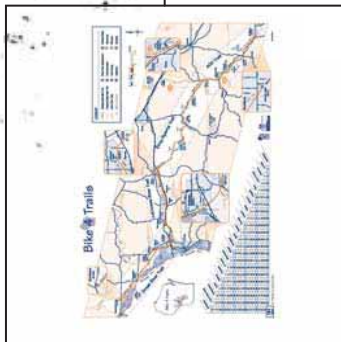
*Ice Age Park & Trail Foundation
Travel Hostel / Dormitory
Recreation Center*

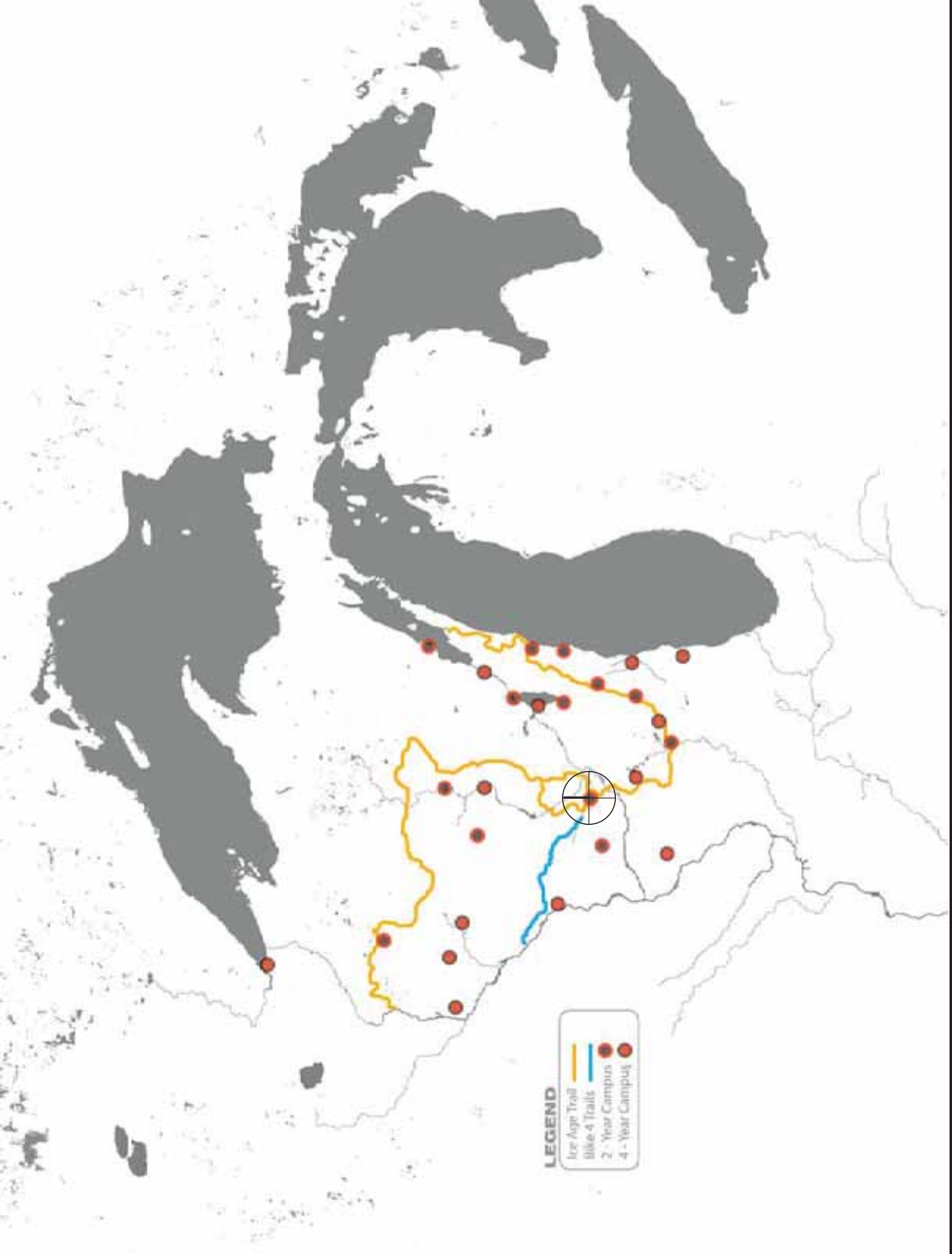


<<< An Alternative Traveler / Community Experience >>>



BARABOO

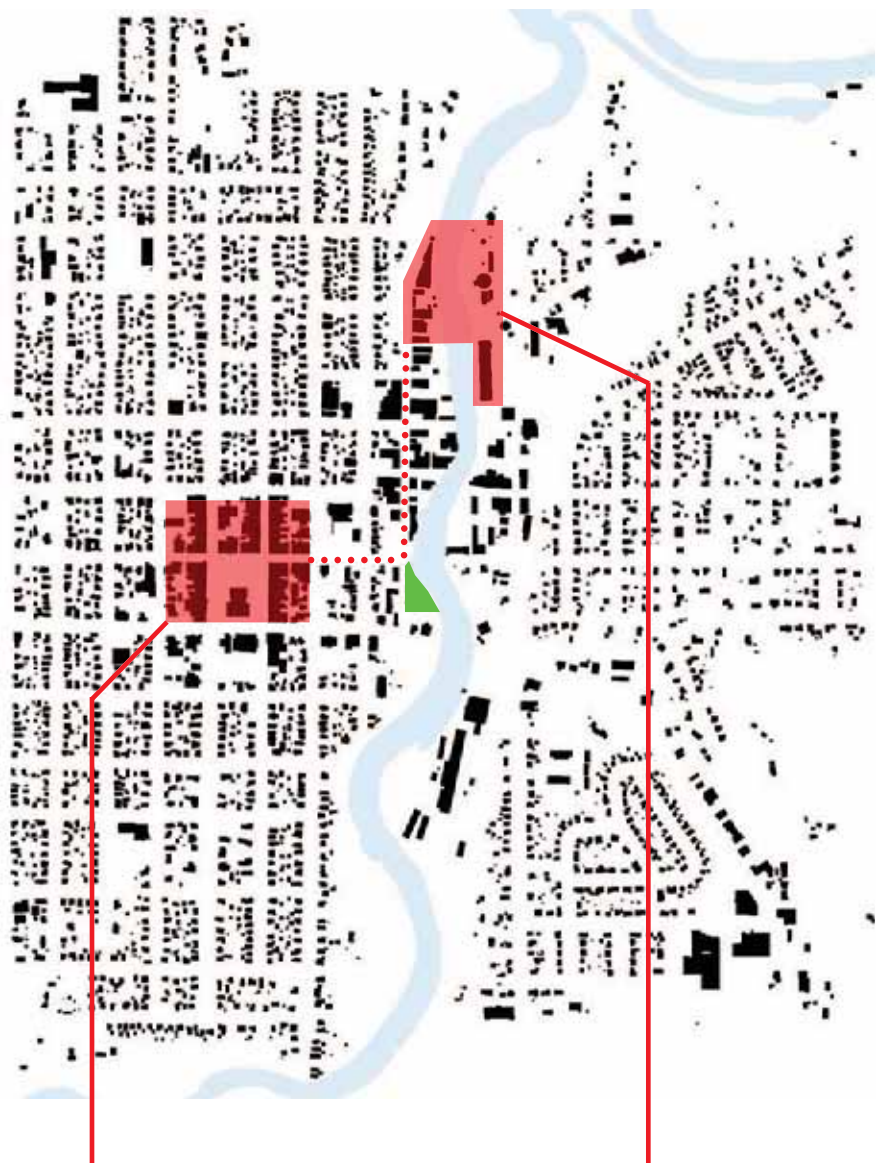




LEGEND

- Ice Age Trail
- Bike 4 Trails
- 2 - Year Campus
- 4 - Year Campus





- 1 Cycles of Life.
- 2 Buildings cannot altogether displace functions of the Land.
- 3 "Affirm the right to continued existence." - Aldo Leopold
- 4 Travelers' Conundrum (TKMA)
- 5 Three E's of Understanding.
- 6 Interdependence. (Think traveler and resident)
- 7 Shared Experience.
- Area / Community Connection**
- 8 Local Materials.
- 9 Local Labor - Glenville Timber Works.
- 10 Geology.
- 11 Near Convergence.
- 12 Boo-!.
- 13 Attractions.
- 14 Volunteer.
- Community / Building Connection**
- 15 Site Interpretation.
- 16 Site conclusion.
- 17 Negative of Trees.
- 18 Paths.
- 19 Accessibility.
- 20 Threshold.
- 21 Viewsheds (TKMA)
- 22 Voided Passage.
- 23 A Living River.
- 24 Spectacular Edge of River.
- 25 The Gap.
- 26 Terra-Walk.
- 27 Unbridled liveliness.
- 28 Life Giving Connection.
- 29 Habitable floors, walls and roofs.
- 30 Daylight/articulate surfaces
- 31 Natural Ventilation (Maintain Flow)
- 32 Rain Nourishes.
- Building / Traveler-Resident Experience**
- 33 Community of Travelers
- 34 Resident Traveler
- 35 Common Ground
- 36 City-Wide Landscape Transition/Threshold
- 37 A Third Place
- 38 Travelers' Arrival Porch.
- 39 Privacy Gradient
- 40 South Facing Outdoors** (Alexander, Pattern 105)
- 41 Positive Outdoor Space** (Alexander, Pattern 106)
- Building Interval**
- 42 VICTORYS' HOME
- 43 COULEE COURT
- 44 RIVER'S EDGE and EXPANDED RECREATIONAL SPACES
- 45 DINING HALL

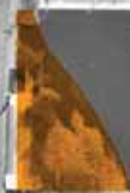




25 The Gap

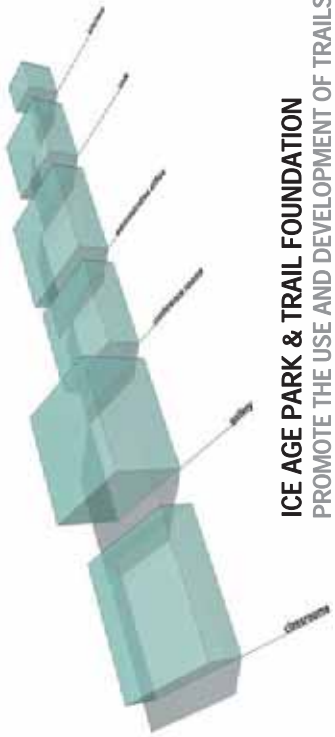


>> BARABOOD RIVER >>

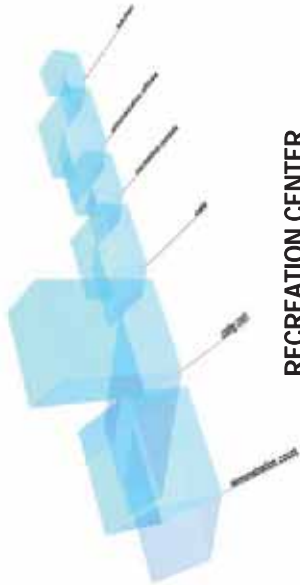


11 Near convergence

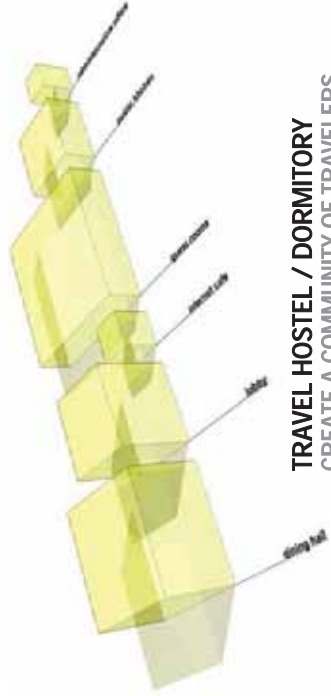




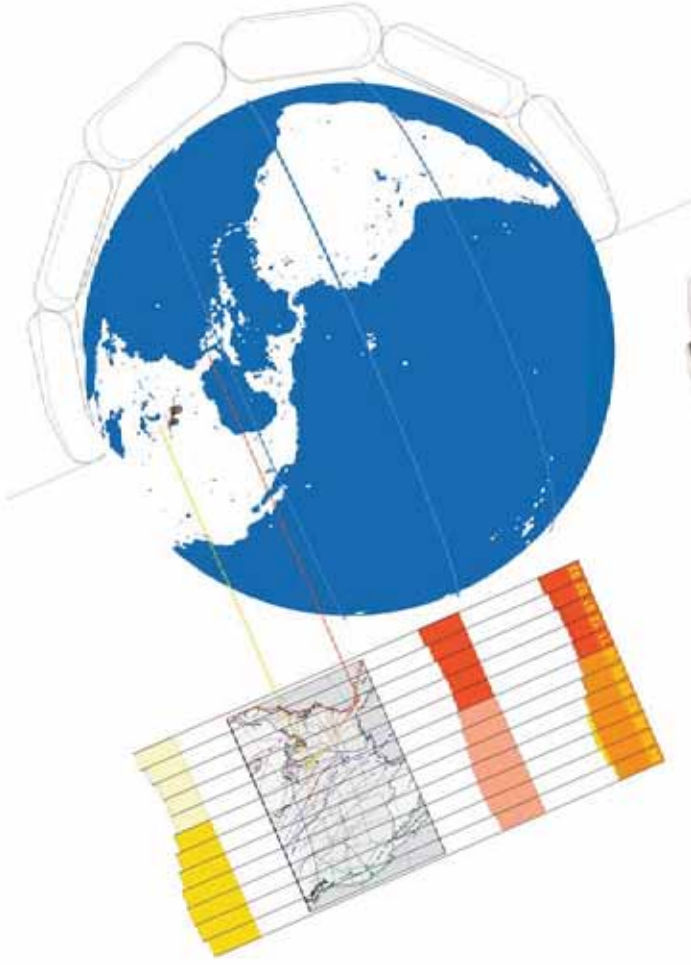
ICE AGE PARK & TRAIL FOUNDATION
PROMOTE THE USE AND DEVELOPMENT OF TRAILS

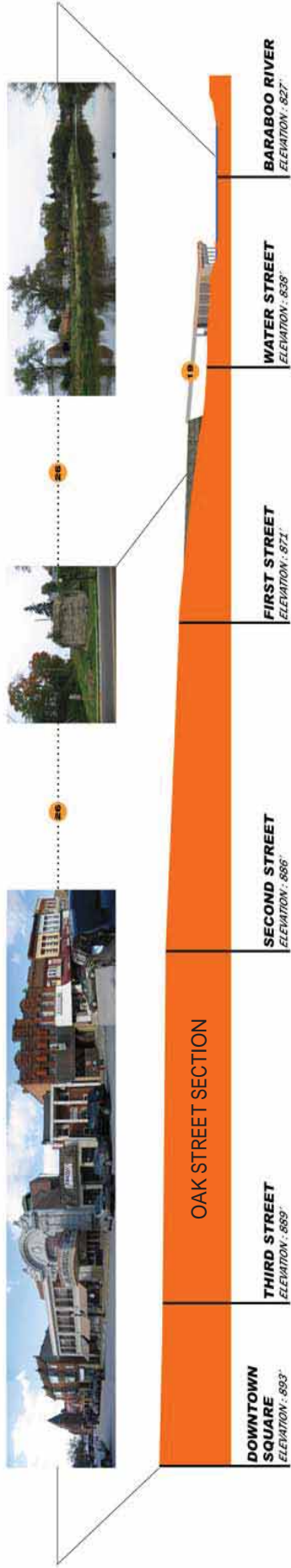


RECREATION CENTER
PROVIDE A DESTINATION WITHIN THE CITY



TRAVEL HOSTEL / DORMITORY
CREATE A COMMUNITY OF TRAVELERS

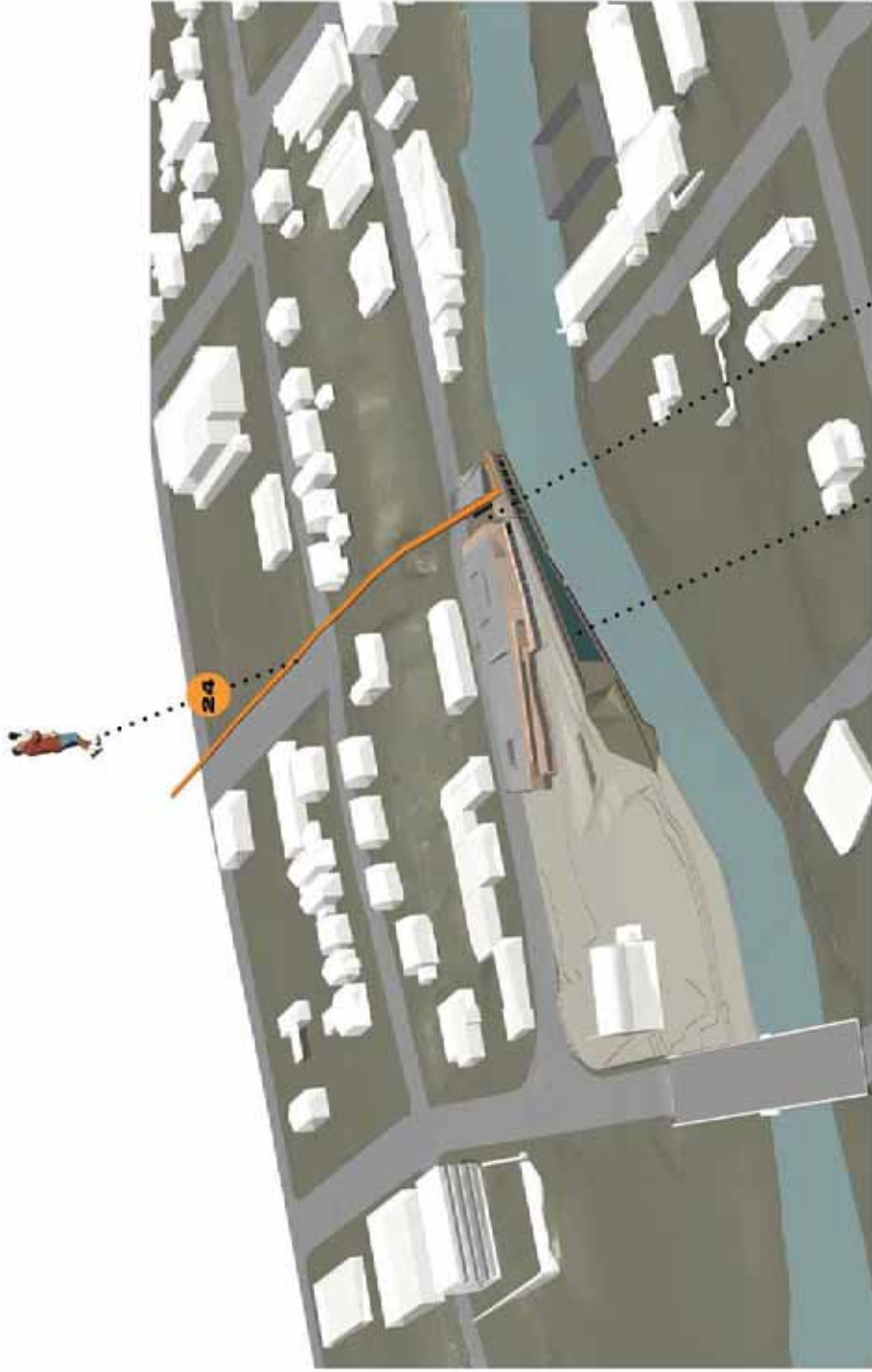




CONNECTING TO THE COMMUNITY

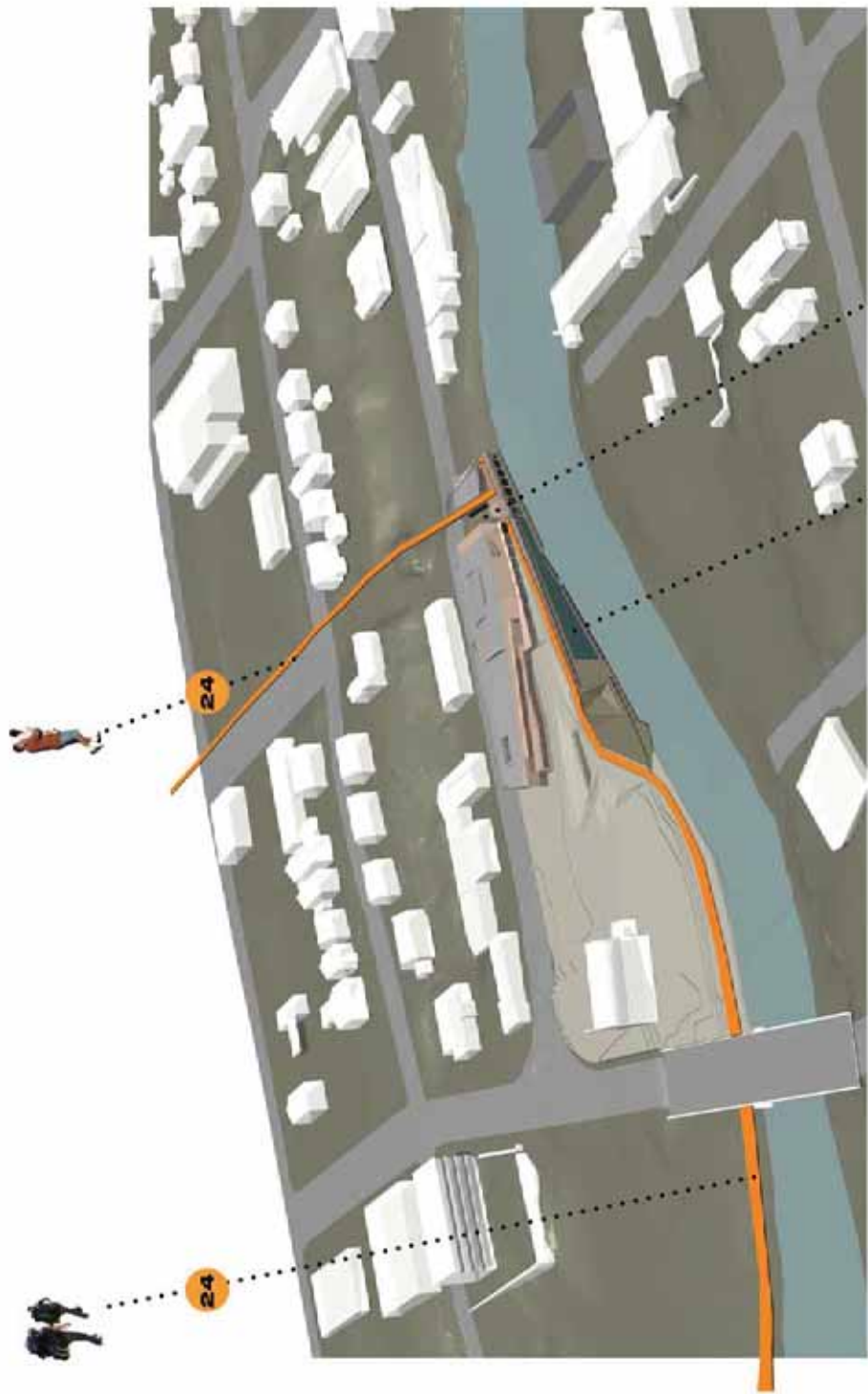
- 4. travelers' conundrum
- 7. shared experience
- 19. accessibility
- 26. connect nodes via promenade





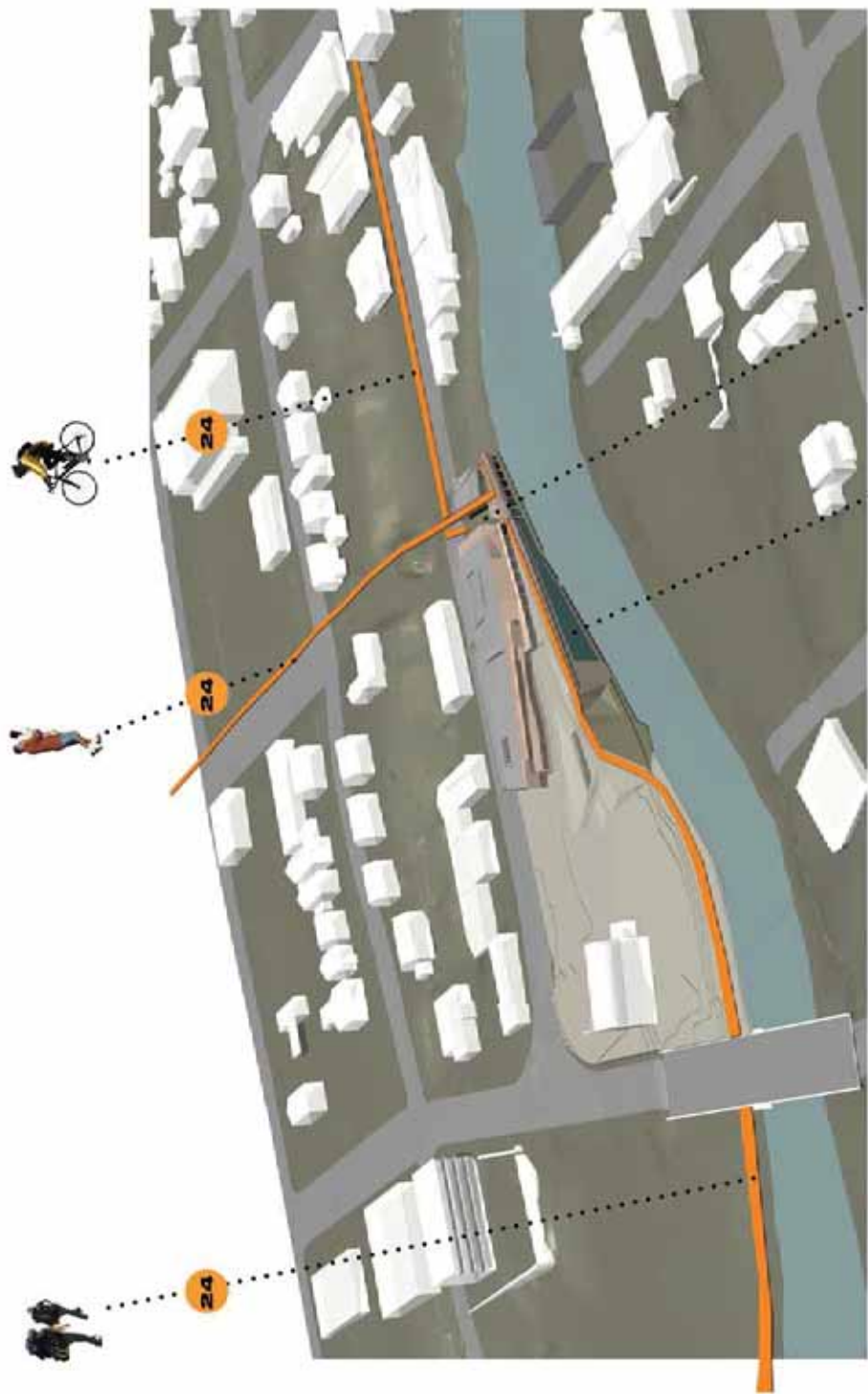
INTERMODAL RECREATION HUB

- 24_a living river
- 25_spacious edge of river
- 28_unbridled liveliness
- 30_travelers' arrival porch



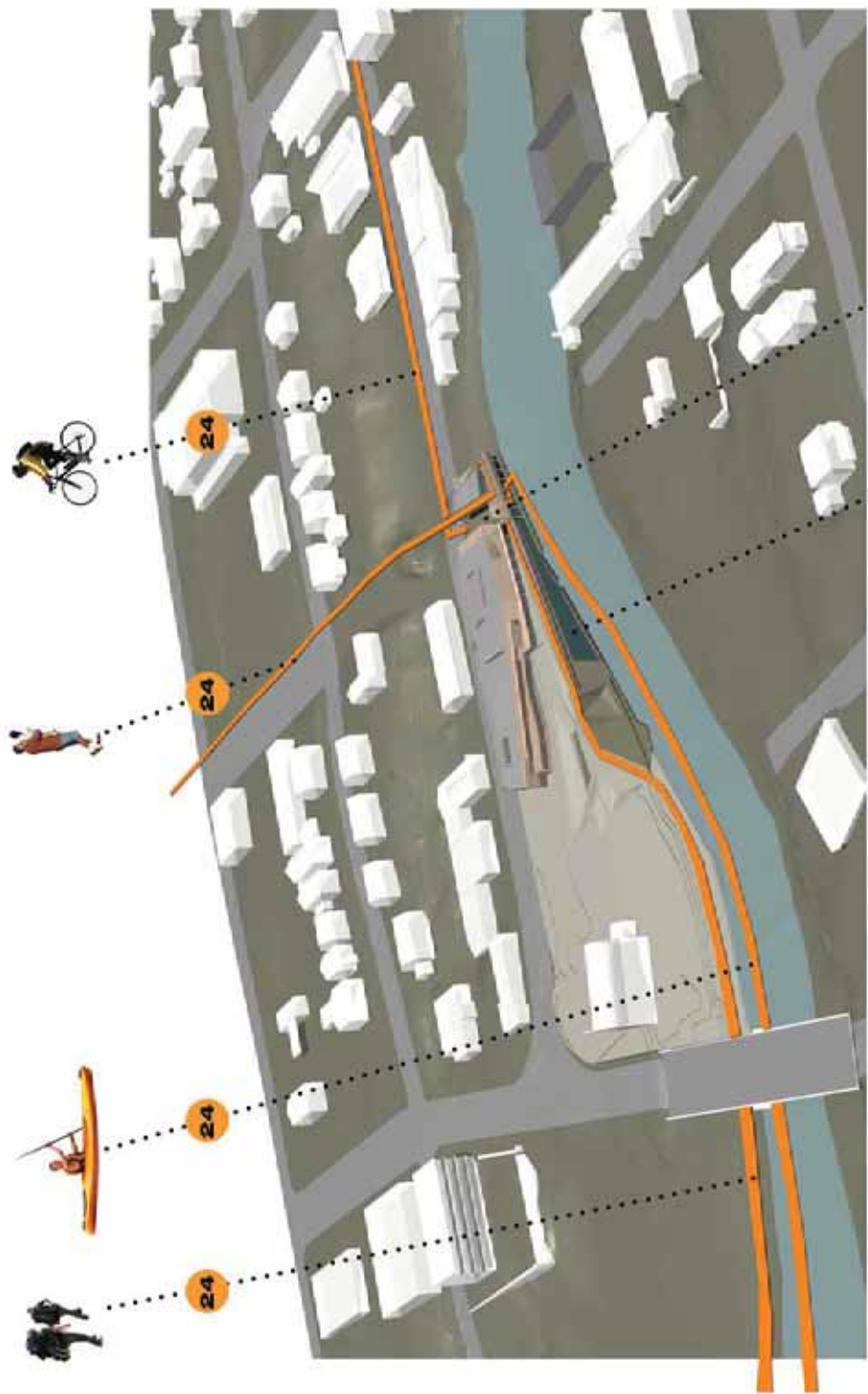
INTERMODAL RECREATION HUB

24_a living river 25_spacious edge of river
28_unbridled liveliness 38_travelers' arrival porch



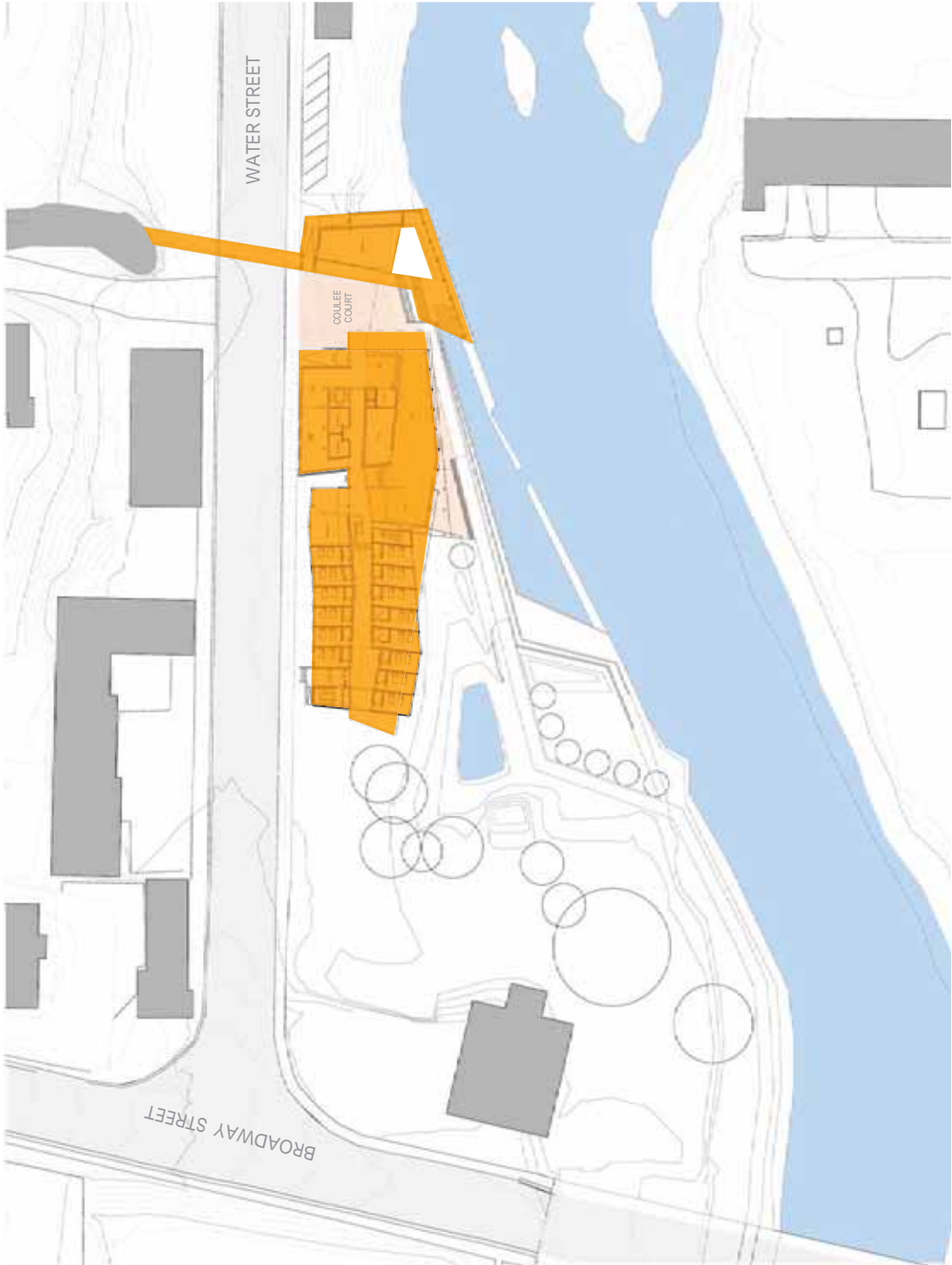
INTERMODAL RECREATION HUB

24_a living river 25_spacious edge of river
28_unbridled liveliness 38_travelers' arrival porch



INTERMODAL RECREATION HUB

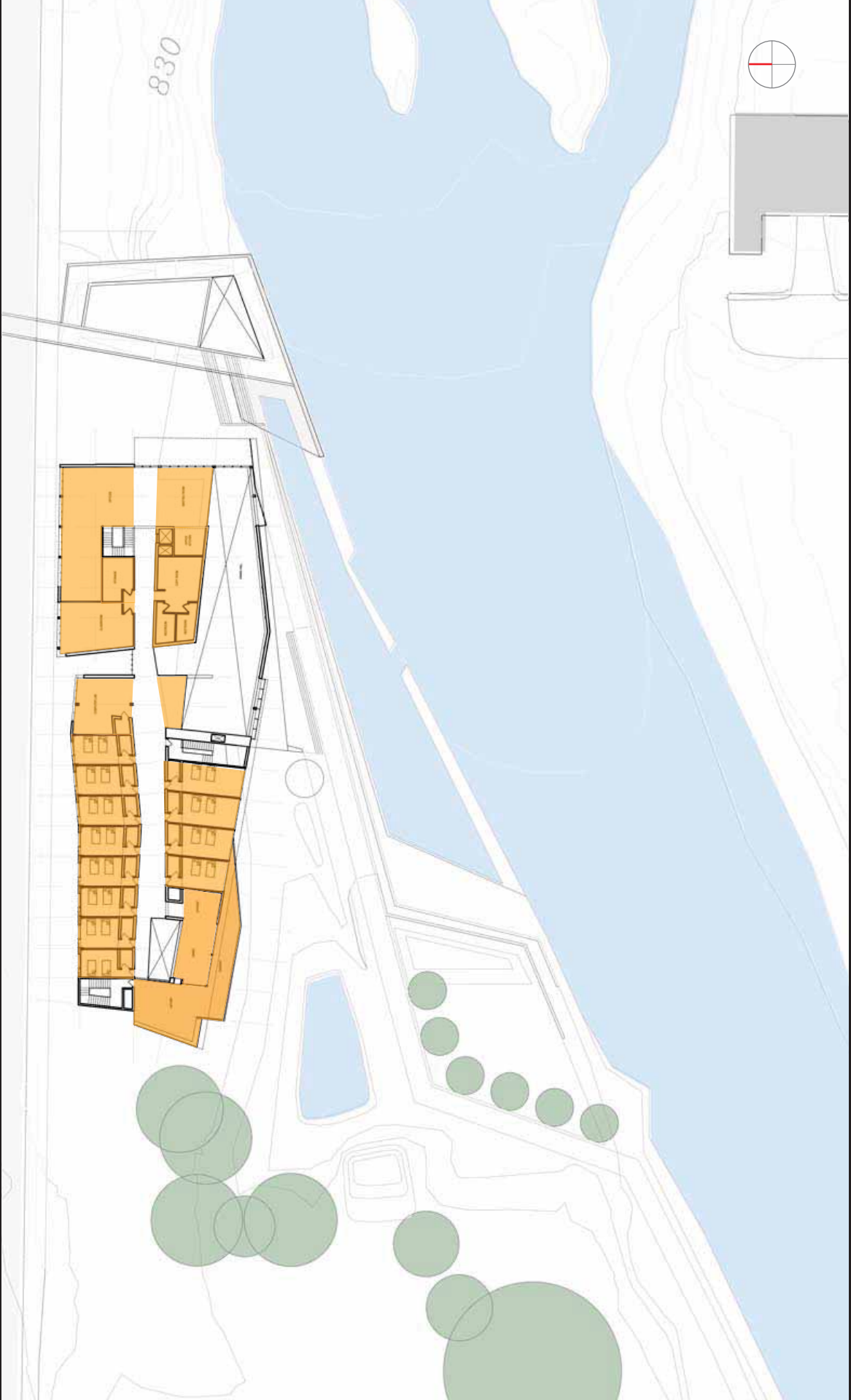
24_a living river 25_spacious edge of river
28_unbridled liveliness 38_travelers' arrival porch





COULEE COURT

830



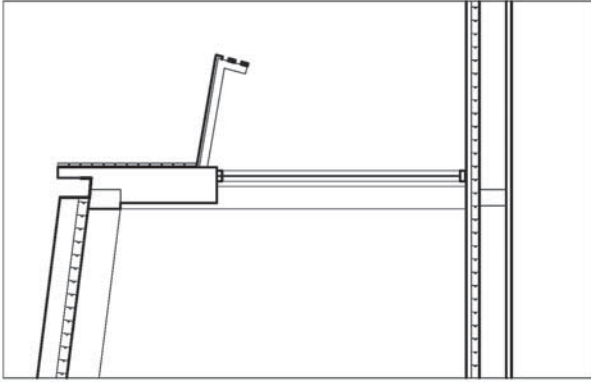


SOUTH ELEVATION

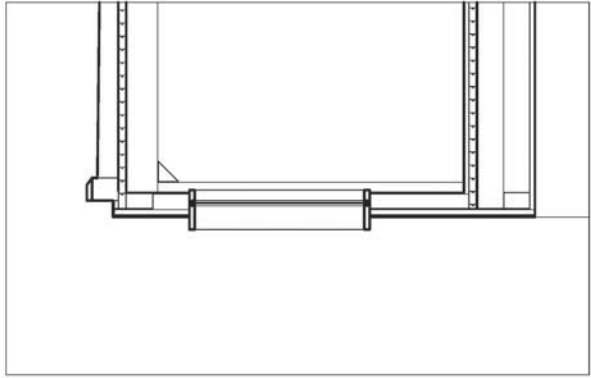


NORTH ELEVATION

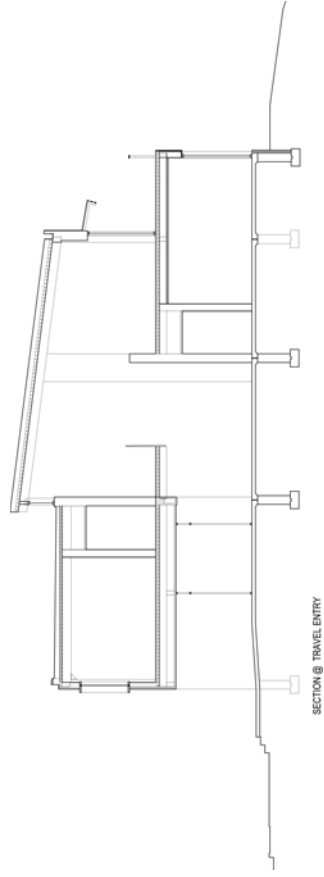




SOUTHERN APERTURE



NORTHERN APERTURE



SECTION @ TRAVEL ENTRY



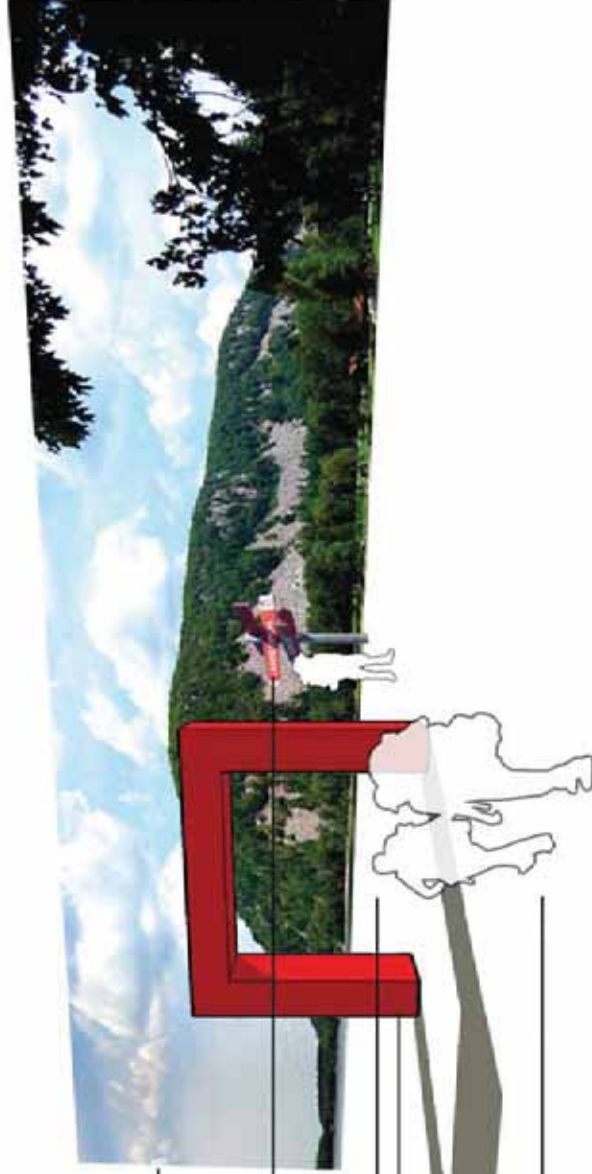
Viewshed

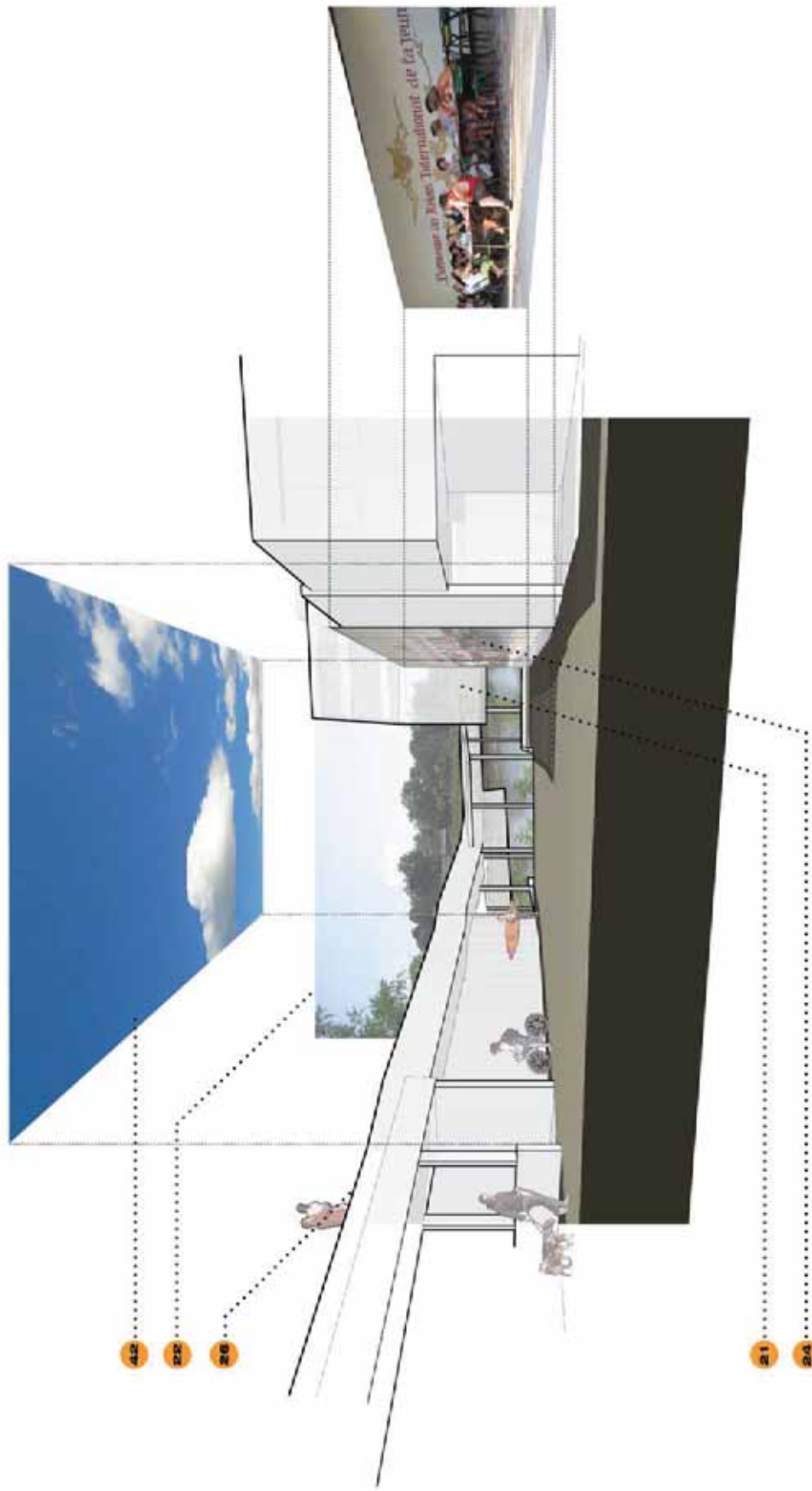
Destination

Space Between

Threshold

Final Assent





42
22
26

21
24

43 COULEE COURT

21. threshold 26. the gap 22. viewshed
24. a living river 42. outdoor room

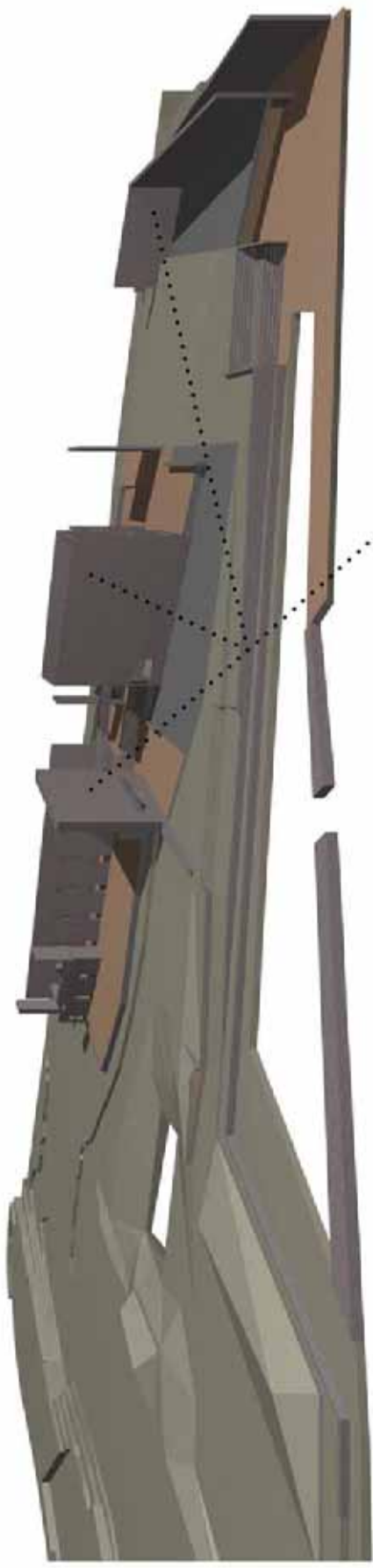




CONNECTING TO THE LANDSCAPE

8_local materials 46Accentuate connection to river 47Form common ground

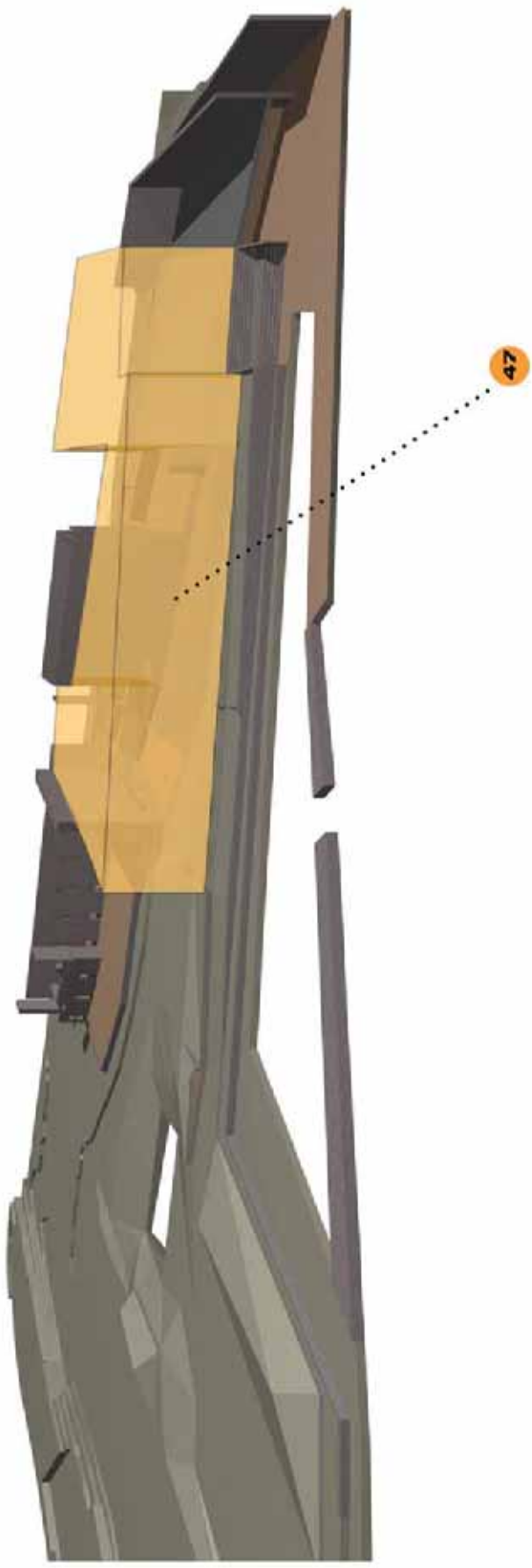




CONNECTING TO THE LANDSCAPE

8_local materials 46Accentuate connection to river 47Form common ground





CONNECTING TO THE LANDSCAPE

8_local materials 46Accentuate connection to river 47Form common ground











DRUMLIN MORaine KETTLE



GLACIAL LANDSCAPE

24_spacious edge of river
48_geographic context 49_diversity of spaces



DRUMLIN **MORaine** **KETTLE**



GLACIAL LANDSCAPE

24_spacious edge of river
48_geographic context 49_diversity of spaces



KETTLE



MORAINE



DRUMLIN

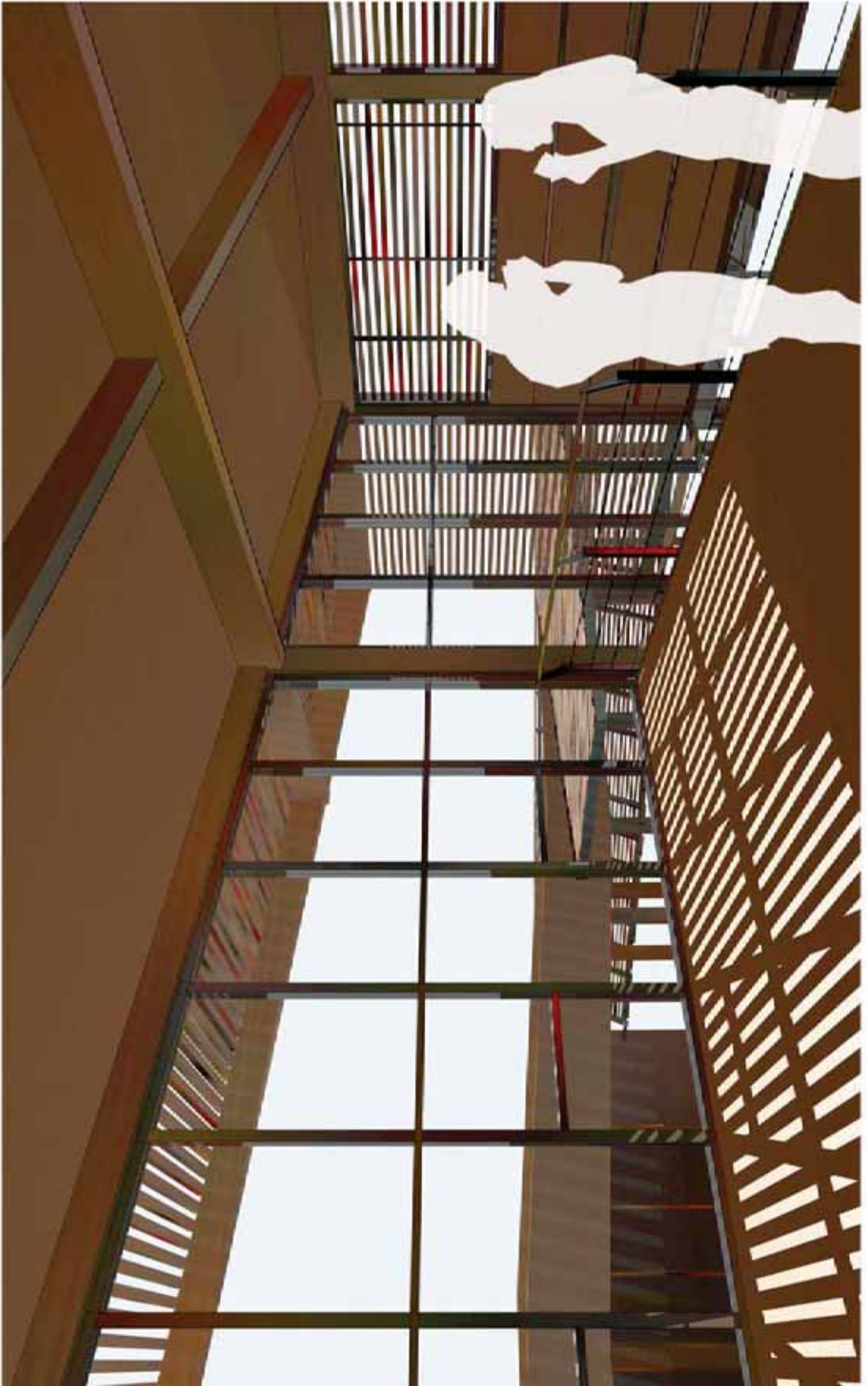


LANDSCAPE DIVERSITY

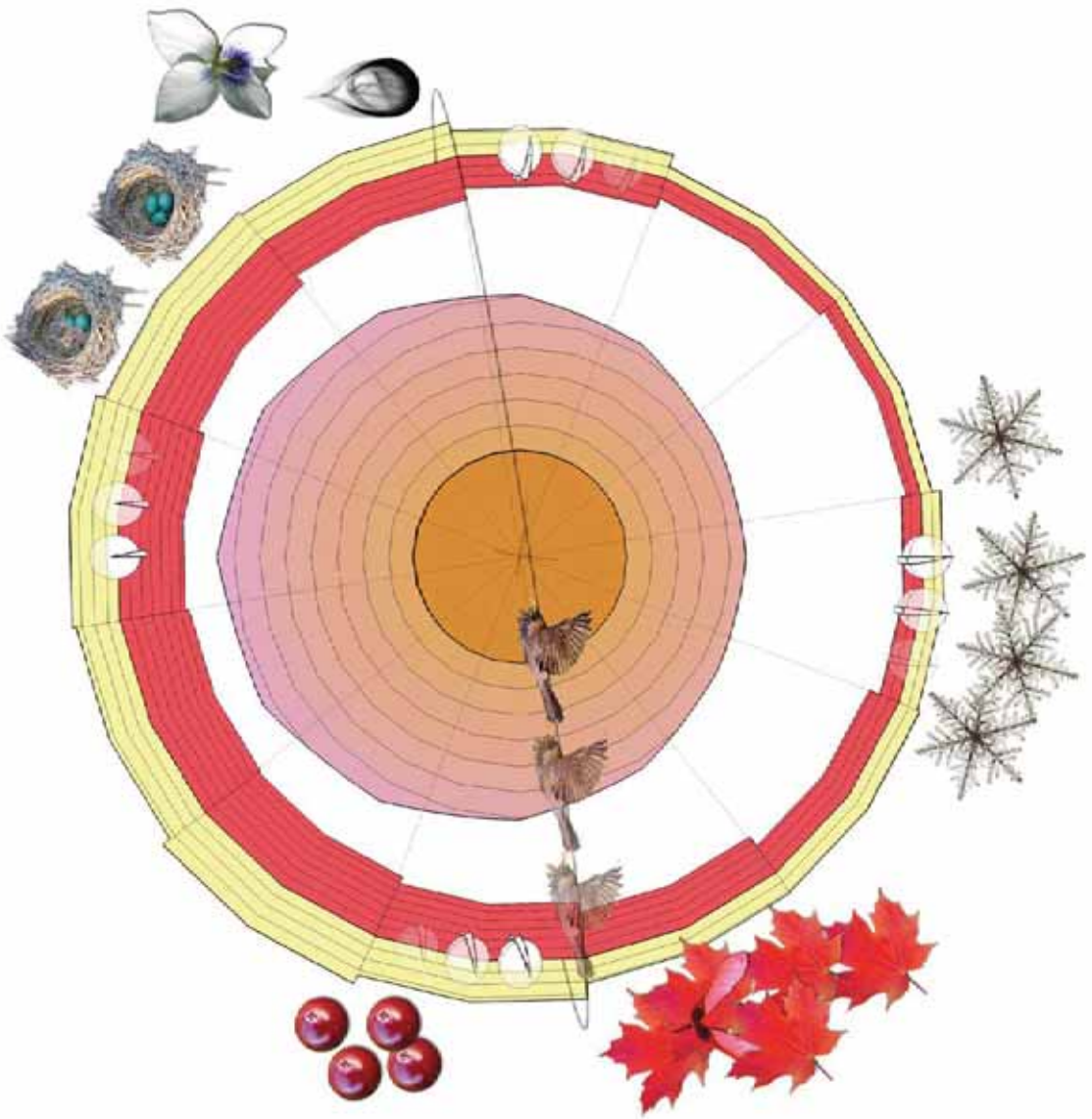












Chris Cornelius, Chair
Kyle Talbott
Greg Thomson
Harvey Rabinowitz, Pre-Thesis Instructor

Thank you.