

UW-L
ME-PD PROGRAM

ME-PD
PROGRAM

(608) 785-8142

WWW.UWLAX.EDU/MEPD

260 MORRIS HALL
1725 STATE ST
LA CROSSE, WI
54601

INSIDE
THIS ISSUE:

Director's Message	1
ME-PD Staff & Schedules	1
Program Update Briefs	2
New Culminating Project Info	2
Board of Review Dates	3
Comp. Exam Dates	3
Praxis II Test Info	3
ME-PD Milestones	4

ME-PD Newsletter

SPRING 2008

MONDAY, JANUARY 28

Winter Greetings, ME-PD!



Dr. Rhonda M. Rabbitt, EdD
Interim Director, ME-PD

I commend each of you for your courage to take on new beginnings. As stated by Maya Angelou, "Courage may be the most important of all virtues, because without it one cannot practice any other virtue with consistency." *Courageously yours,*
Rhonda M. Rabbitt

Have you had the chance to meet Chancellor Gow? What a wonderful student advocate, role model, and leader for our campus. At his inauguration he spoke of attending to the body, mind, and spirit. He broke tradition at the close of the event when he sang with the Jazz Band.

He has authored a number of publications on popular music and news media, and he's a blues singer and avid guitarist. The new chancellor is also a vegan and runner. If you get the chance, introduce yourself!

*Word has it that our
Chancellor will be performing
at the Cellar in March !*

Save the Date
**5th Annual Act 31/
Widening the Circle
Teacher Education
Symposium:**

Helping teachers to teach about Wisconsin Native American and Hmong history, culture, cultural relevancy and critical pedagogy, authenticate materials, and infuse curriculum.

For more information:
Visit our website
www.uwlax.edu/native

Or contact
Matt Stewart or Guy Wolf at
608-785-8838 or 784-1617
stewart.matt@students.uwlax.edu

ME-PD Office Staff & Spring Schedules

Margie Hylkema

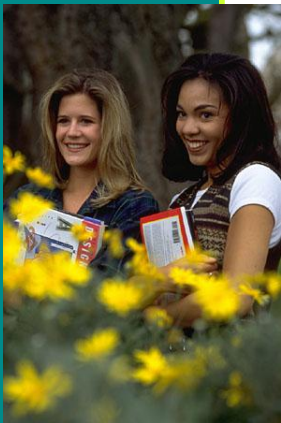
Assistant to the ME-PD Director
268 Morris Hall
8:00-4:30 Monday—Friday

ME-PD office

1725 State Street, 271 Morris Hall
La Crosse, WI 54601
Phone (608)785-8142 Fax 785-6560
mepd@uwlax.edu

Margie works primarily with the ME-PD **Learning Community track**. Margie can help with learning community information and with help connecting with Dr. Rabbitt.

Special thanks to former Graduate Assistant, Meaghan Gustafson, who is student teaching in Westby this semester. Her support and leadership within the ME-PD department will be greatly missed. We wish her continued success in her next educational journey.



Once again, UW-La Crosse has been recognized nationally for “top-flight academics and affordable costs.” Kiplinger’s Personal Finance February 2008 issue gave the university the honor by naming it to its “best value” list among the nation’s public colleges.

Last fall, U.S. News & World Report ranked UW-La Crosse the third best value among Midwest public colleges. The only other Wisconsin schools to make the 2008 Kiplinger’s Top 100 are UW-Madison, which ranks No. 19 for in-state students, and UW-Eau Claire, which is No. 64. Complete rankings are available at kiplinger.com.

Program Update Briefs

ME-PD is currently collaborating with the Graduate Reading and Graduate Special Education Programs to improve graduate program alignment and culminating project guidelines.

Pending approval in spring 2008, curriculum changes to the Professional Development and Initial Certification programs will be in place starting in fall 2008.

The Department of Educational Studies’ Student Development Committee is seeking a graduate representative.

The SDC meets monthly and works to meet the needs of DES students. Interested students can contact Dr. Krajewski at 785-8125 or krajewsk.robe@uwlax.edu.

DES is currently accepting applications for the ME-PD Director position. Pending

a successful search, the new Director would begin serving in July 2008.

The updated Initial Certification and Professional Development sections of the ME-PD website have been up for three months. Changes are made regularly. Please visit www.uwlax.edu/mepd for announcements, current calendars, links to important student services, and to access program information and forms. If you have any comments, suggestions, or complaints about the website or it’s ease of use, please let ME-PD know.

Six ME-PD students graduated in December 2007. For the spring 2008 semester, there are 30 active Initial Certification candidates and 22 active Professional Development candidates. ME-PD welcomes

only one new student this term, a Professional Development student who transferred from the graduate reading program.

Two **summer online courses** may be of particular interest to ME-PD students:

- Special Topics Seminar in Education: Cultural Diversity Communication Training (3 grad cr). Please visit this link <http://www.uwlax.edu/conted/pdf/access2008.pdf>
- Special Topics: Exploring Alternative Education (3 grad cr). Instructor: **Dr. Rabbitt**, ME-PD Interim Director. Register on TALON.

New Culminating Project Information

Active teachers are being called upon to participate in action research at increasing rates.

Best practices of teaching call for research-based evidence to support the teaching process.

Doctoral study applications most often require a research paper submission. All of these reasons might cause you to consider choosing the seminar paper or thesis paper for

your mandatory culminating project.

More and more students have been inquiring about the seminar paper and thesis options for their culminating project.

What exactly is the difference between the two? Basically, depth of study and credit hours.

If you are choosing either of these options for your culminating project, ME-PD recommends taking EFN

760: Theory and Practice in Educational Research as early in your program as possible.

For more detailed information inquire the ME-PD office and/or visit our website.

Examples of Theses and Seminar Papers/Projects by ME-PD students will be posted on the website shortly.

Board of Review Process Information & Dates



The Board of Review is a faculty committee whose purpose is to evaluate, approve and guide the programs for *all* ME-PD students. Prior to the completion of nine (9) graduate credits, ME-PD candidates must complete and submit a proposal packet to the Board of Review. The proposal must

include a list of chosen coursework, determination of a culminating project, and a professional statement.

Completing the documents and the Board of Review process is an essential component of the ME-PD program; students who neglect to participate will be blocked from registering and continued progress on their ME-PD degree.

Once the process is complete, students will have a

clear understanding of the specific requirements necessary for the ME-PD degree. The approved Board of Review Document is intended to act as a tool that will guide you through your course of study. All ME-PD Students were emailed the BoR forms and directions in early August.

Completed forms are due to ME-PD by - Friday, February 15.

Upon submission, Professional Development students must schedule a time to meet with the Board.

The Spring Board of Review Meeting is scheduled for Thursday, February 28 from 3-6:30

Please contact Meaghan for assistance at 785-8142 or mepd@uwlax.edu.

Comprehensive Exam Information & Dates

The Comprehensive Exam is one of three Culminating Project options for all ME-PD Students.

Upon the completion of 30 graduate credits, ME-PD students are eligible to write the exam.

Students choose three faculty members to serve on their

Comprehensive Exam Committee, each of whom writes two questions based on course content. During the four hour exam, students must write responses to four questions, including one from each Committee Member.

If you are considering taking the Comprehensive Exam during Spring or Summer 2008, please contact the ME-PD Office at 785-

8142 as soon as possible. ME-PD will be holding Comprehensive Exam Informational Meetings on Thursday, February 7th and Thursday, April 17th at 6:30 in 277 Morris.

The Spring 2007 Comprehensive Exam will be held on **Saturday, March 8** in Murphy Library.

The next opportunity to write the Comprehensive Exam is scheduled for **Saturday, May 31**.

Praxis II: Subject Assessment Tests

The Wisconsin Department of Public Instruction requires that all students completing a Wisconsin professional education licensure program take the specific Praxis II test that corresponds to the license they are working towards.

UW-L requires that students pass the Praxis II Exam prior to student teaching.

Please check the Educational Test-

ing Service website at www.ets.org/praxis for more information, including test lists and practice tests, registration information, and score reports. When registering, be sure to designate UW-L as a score recipient to ensure that your results are sent here.

Praxis II testing dates for the 2007-2008 academic year are as follows:

January 12, 2008

March 15, 2008

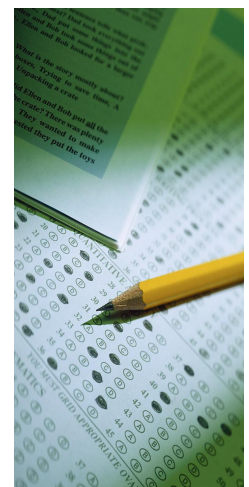
April 26, 2008

June 14, 2008

July 26, 2008

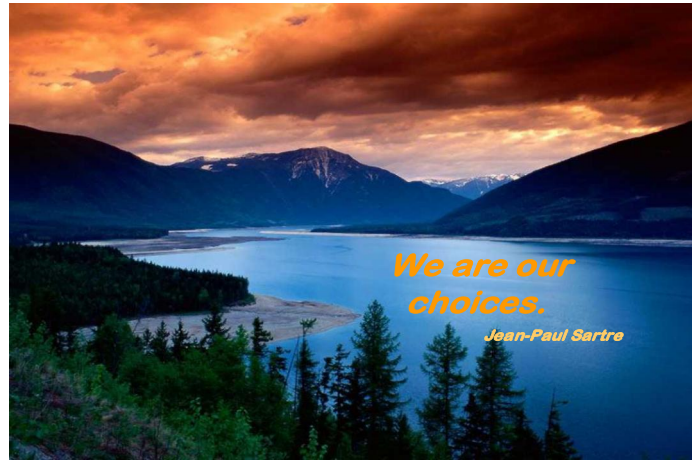
Register for the exams early, as space fills fast.

Contact Sandy Keller with questions about the Praxis II exams at 785-8123 or keller.sand@uwlax.edu.



The ME-PD program is founded on a history of improving the quality of education throughout the state of Wisconsin while remaining absolutely dedicated to meet the individual needs of its graduate students. Hundreds of ME-PD program graduates are delivering best practices in education for PreK-12 students within Wisconsin and the United States

The ME-PD program strives to develop within its graduates commitment to the teaching profession, profound respect for the dignity of all learners, and professional competencies that enable them to effective teachers and responsible citizens in a diverse and dynamic world.



ME-PD Milestones

We congratulate and commend the following recent ME-PD Graduates:

- **Valarie Rothering, Professional Development Track**
Valarie works as the Community Liaison/Parent Educator for the new Holmen 4K program.
- **Dempsey Miller, Professional Development Track**
Dempsey works as the African-American Student and Family Liaison for the School District of La Crosse, and was recently named the 2007 La Crosse Tribune Person of the Year.
- **Linda Steine, Professional Development Track**
Linda has just accepted a position with UWL's Continuing Education to develop new education programs in the arts.
Her thesis was: *Water Mixable Oils: Comparison and Use in the Classroom*
- **Xiong Vang, Professional Development Track**, Thesis Title: *Language Development and Literacy*
- **Nicole Sowinski, Initial Certification Track, EA-A Broadfield Social Studies & Spanish**
Nicole recently accepted a position as a Spanish teacher for grades 6-8 at Samuel Morse Middle School in Milwaukee.
- **Melanie Hunter, Professional Development Track**, has deepened her expertise as a middle school teacher.