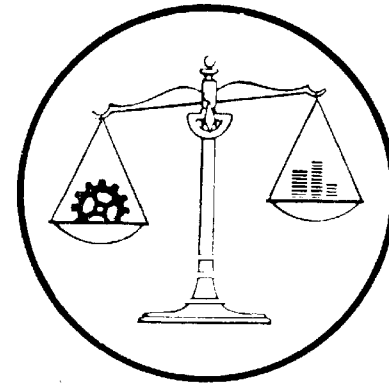


VALUE
ANALYSIS

TRAINING PROGRAM

OCTOBER - 1955
EDISON CLUB
Rexford, New York

GENERAL  ELECTRIC



GENERAL ELECTRIC COMPANY


Schenectady, New York

TESTS FOR VALUE
Our Challenge — Our Obligation
*Every material, every part, every operation
 must pass these tests*

* * *

1. Does it give *intrinsic* Value?
2. Is its cost proportionate to its usefulness?
3. Does it use *all* of its features?
4. Is there anything better for the intended use?
5. Can a suitable part be made by a lower cost method?
6. Can a standard product be found which will be usable?
7. Is it made on proper tooling, considering quantities used?
8. Do material, reasonable labor, overhead and profit total its cost?
9. Will another dependable supplier provide it for less?
10. Is anyone buying it for less?

[Signature]

GENERAL  ELECTRIC



C. W. Bryant
 Manager
 Materials Services Dept.
 Manufacturing Services Div.

"Fair achievement is not good enough."



Claude M. Watt
 Electronic Equip. & Tube
 Canadian General Electric

"Value Analysis will help you fight world competition"

*"Trained in Value Techniques and the
use of specialists - - - each man has
doubled his worth."*

L. D. MILES

MATERIALS SERVICES DEPARTMENT

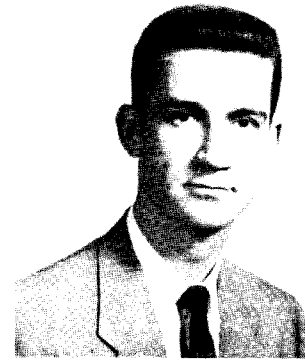
VALUE ANALYSIS SERVICES SECTION



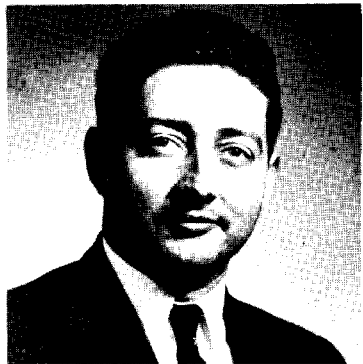
Lawrence D. Miles
Manager
Value Analysis



R. E. Fountain
Consultant
General Training &
Service Programs



A. D. Bentley
Specialist
Specialty Vendors,
Products, Materials



Harold J. Coughlin
Specialist-Manufacturing &
Special Training Programs



E. H. Kittle
Specialist
Plant Value Analysis Practices



C. J. Zimmers
Specialist-Manufacturing
Methods & Processes



S. Hvamb
Specialist-Value Analysis
Product Evaluation



Ann Mayell
Secretary



Gertrude Frick
Secretary



Jean Fonda
Secretary



Carmela DeMaria
Secretary

PROGRAM COMMITTEE

EDISON CLUB SEMINAR
REXFORD, NEW YORK

October 3 - October 21, 1955



Harold Coughlin
Seminar Manager

Supervisor - Vendor Pres.

Supervisor - Projects



John DiMarco
Value Analyst
Med. Ind. Motor



L. H. "Buzz" Williams
Cost Reduction
Large Steam Turbine



Peter Keene
Hotel accommodations, Tables,
Project Material, Layout and
seating, Motion picture equip.



Bill Ryan
Transportation



Steve Skalski
Transportation, File cabinets,
Shipping, Mimeograph,

SEMINAR
PROJECT LEADERS



Jean Fonda
Registration, Literature
Dictation & Typing, Cash
Advn. , Stationery



Marie Hogan
Inquiries, Duplication
Suggestion sheets



Dick Davis
Engineer
Relations & Utilities



Carmela DeMaria
Transp. reservations,
Inquiries, Suggestion sheets



Jeanne Millett
Inquiries, Duplication
Suggestion Sheets



Paul Durkin
Buyer
HMEE
Syracuse, N. Y.



John Hashek
Value Analyst
Canadian G. E.
Montreal, Canada



Charles Kniskern
Supv. -Methods
Clock & Timer
Ashland, Mass.



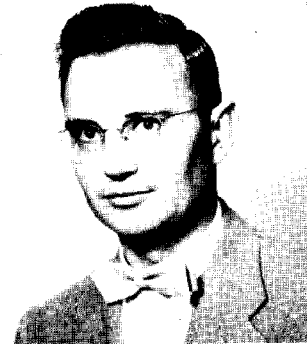
Fran Johnson
Value Analyst
Engineering
Bloomington, Ill.



Burt Levin
Supv. Planning
Lge. Steam Turbine
Schenectady



Robert Kane
Value Analyst
Clock & Timer D ept.
Ashland, Mass.



Hearold Montgomery
Value Analyst
Ballast Dept.
Danville, Ill.



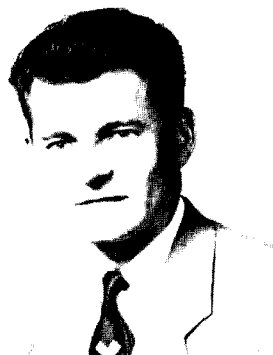
Arthur Mudge
Special Assignment
Distr. Transf.
Pittsfield, Mass.



William Schonman
Value Analyst
Trumbull Components
Plainville, Conn.



Richard Powell
Value Analyst
Gen. Purp. Motor Dept.
Ft. Wayne, Ind.



Edward Sears
Value Analyst
Appliance Control
Morrison, Ill.



Jack Prendergast
Value Analyst
LMEE
Utica, N. Y.



Fred Zoellner
Value Analyst
Evendale, Ohio

CLASS
OCTOBER - 1955



George Baker
Design Engineer
Meter Dept.
Somersworth, N. H.



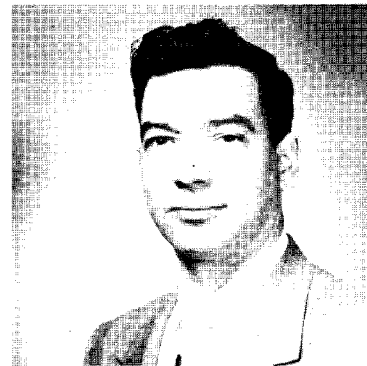
Duane Anderson
Product Engineer
A&OS
Schenectady, N. Y.



Robert Bangert
Purchasing Agent
Specialty Comp. Motor
Ft. Wayne, Indiana



Stephen Bacon
Engineer-Test Facilities
Relations & Utilities
Schenectady, N. Y.



Roy Barnes, Jr.
Methods Leader
Dist. Trans. Dept.
Pittsfield, Mass.



H. W. Barrett, Jr.
Specialist-Advance Planning
Gas Turbine Dept.
Schenectady, N. Y.



Robert Brackett
Product Engineer
Meter Dept.
Somersworth, N. H.



Don Barry
Technical Engineer
ANP
Evendale, Ohio



F. M. Brehob
Value Analyst
Evendale Operating
Evendale, Ohio



F. M. Blossom
Equipment Engineer
Equipment Development
Schenectady, N. Y.



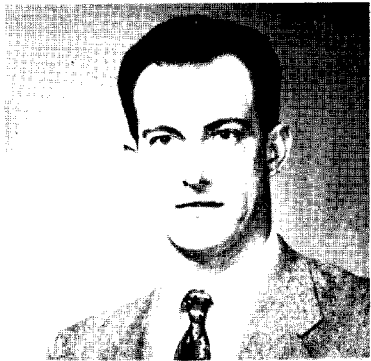
Robert Brown
Project Engineer
Jet Engine Dept.
Evendale, Ohio



Gene Cascini
Planning & Methods
A&OS
Schenectady, N. Y.



Frank Clark
Engineer
A&OS
Schenectady, N. Y.



Joseph Chambley
Mfg. Training Prog.
A&OS
Schenectady, N. Y.



Hubert Cleary
Engineer
L&CE
Erie, Pa.



Edward Chmielinski
Methods Engineer
Clock & Timer
Ashland, Mass.



Charles Cooper
Design Draftsman
Relations & Utilities
Schenectady, N. Y.



Robert Cooper
Procedures
Distribution Trans. Dept.
Pittsfield, Mass.



Edmund Crowe
Purchasing Specialist
Household Refrig. Dept.
Louisville, Ky.



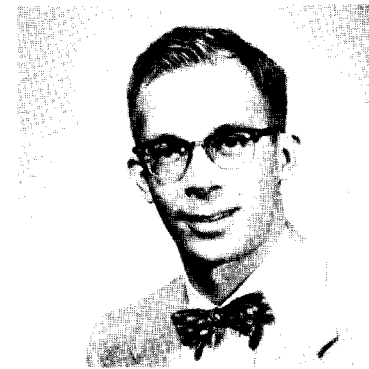
Robert Copeland
Mfg. Specialist
Gen. Purp. Comp. Motor
Ft. Wayne, Ind.



Laurence Decker
Communications Analyst
Relations & Utilities
Schenectady, N. Y.



John Costello
Cost Analyst
Wire & Cable Dept.
Bridgeport, Conn.



Edward Delahooke
Planning Engineer
Auto. Blanket & Fan
Asheboro, N. C.



Alfred DeMott
Engineer
Electric Housewares
Allentown, Pa.



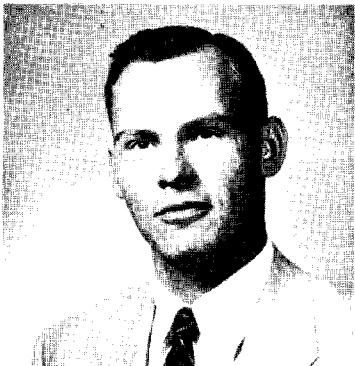
Louis Ettlinger
Engineer
Distribution Transf. Dept.
Pittsfield, Mass.



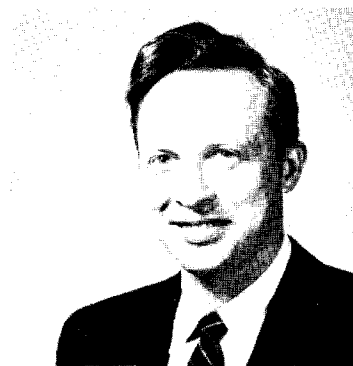
Arthur Duquette
Foreman
Relation&Utilities
Schenectady, N. Y.



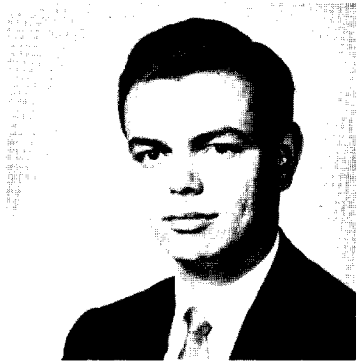
Linton Floyd
Mfg. Training Prog.
KAPL
Schenectady, N. Y.



Carl Dykema
Sales Rep.
Plastics Dept.
Indianapolis, Ind.



Howard Fohrhaltz
Engineer
Power Transf.
Pittsfield, Mass.



Ronald Galione
Value Analyst
Instrument Dept.
West Lynn, Mass.



Eugene Godfroy
Product Engineer
Plastics Dept.
Taunton, Mass.



Kenneth George
Cost Leader
Relations & Utilities
Schenectady, N. Y.



Richard Goodman
Designer
Gas Turbine Dept.
Schenectady, N. Y.



J. I. Gifford
Marine Engineer
N. Y. Naval Shipyard
Brooklyn, N. Y.



Mark Gotsch
Planner
Gen. Purp. Comp. Motor
Ft. Wayne, Ind.



Loren Gray
Project Engineer
Household Refrig.
Louisville, Ky.



Arnold Hoffer
Production Engineer
L&CE
Erie, Pa.



G. C. Harbison
Mgr, Engineering
Household Refrig.
Louisville, Ky.



Fred Hollister
Designer
LMEE
Utica, N. Y.



William Harrison
Supv. - Machine Shop
Power Transformer
Pittsfield, Mass.



Robert Huffman
Design Engineer
Specialty Comp. Motor
Ft. Wayne, Ind.



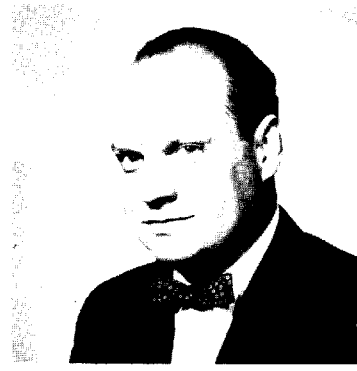
Arys Huizinga
Supv. -Ship Building
U. S. Navy
Chicago, Ill.



Albert Johnson
Engineer
Lamps, Leads & Bases
Goldsboro, N. C.



Gerald Iler
Engineer
Power Tube Sub-Dept.
Schenectady, N. Y.



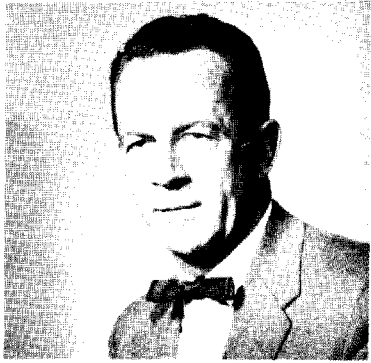
Robert Kear
Buyer
Radio & TV Dept.
Syracuse, N. Y.



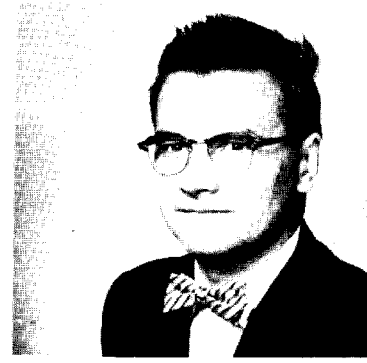
Charles Jenks
Cost Reduction Spec.
L&CE
Erie, Pa.



Peter Keene
Creative Engineering Prog.
Materials Services Dept.
Schenectady, N. Y.



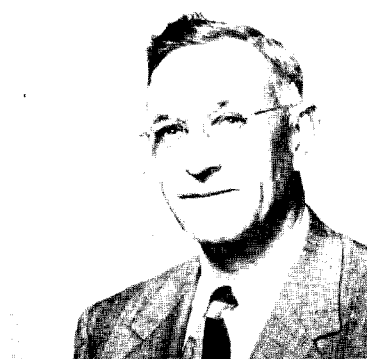
Edwin Keir
Buyer
Pittsfield, Mass.



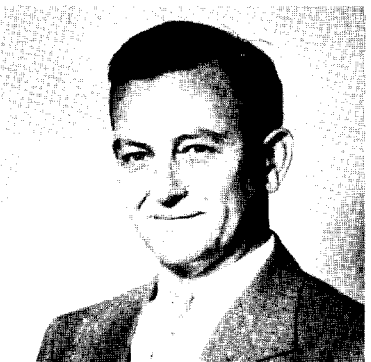
Alfred Kline
Working Leader
Gas Turbine Dept.
Schenectady, N. Y.



Raymond Kierspe
Mfg. Specialist
Gen. Purp. Comp. Motor
Ft. Wayne, Ind.



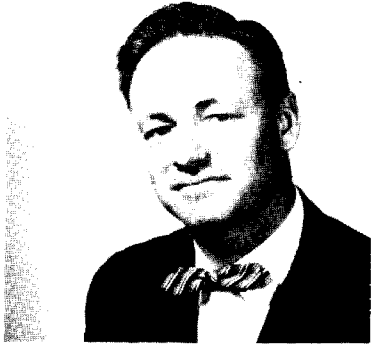
Clarence Kreisler
Cost Analyst
Gen. Purp. Comp. Motor
Ft. Wayne, Ind.



Arthur Klein, Jr.
Foreman
Relations & Utilities
Schenectady, N. Y.



Richard Lantz
Supv. - Methods
Power Transf. Dept.
Pittsfield, Mass.



Bruce Latter
Design Engineer
Household Refrig.
Louisville, Ky.



Robert Marshall
Design Engineer
L. M. E. E.
Utica, N. Y.



Lester Little
Product Engineer
Auto. Blanket & Fan
Asheboro, N. C.



W. Mattox
Development Engineer
Gen. Engineering Lab.
Schenectady, N. Y.



S. C. Manuel
Supv. -Materials
Lam. & Ins. Prod.
Schenectady, N. Y.



Robert McClelland
Specialist-Mfg. Planning
Hermetic Motor Dept.
Ft. Wayne, Indiana



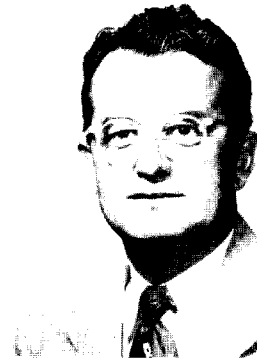
T. F. Mirczak
Engineer
LMEE
Utica, N. Y.



E. A. Otto
Standard Components Spec.
Power Trans. Dept.
Pittsfield, Mass.



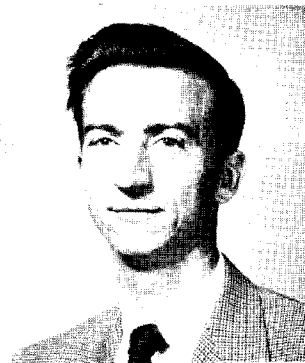
Joseph Onkey
Buyer
Automatic Blanket & Fan
Bridgeport, Conn.



John Ouimet
Design Specialist
Gas Turbine Dept.
Schenectady, N. Y.



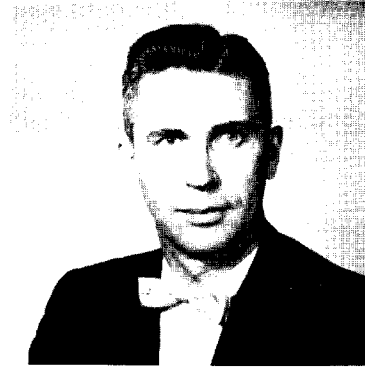
Alex Oros
Buyer
Large Motor & Gen.
Schenectady, N. Y.



William Pangburn
Planner
Gen. Engrg. Lab
Schenectady, N. Y.



Frank Pinto
Sales Rep.
Plastics Dept.
New York, N. Y.



John Pulaski
Development Engineer
Household Refrig.
Louisville, Ky.



F. R. Priest
Engineer-Communications
LMEE
Utica, N. Y.



Irwin Schiff
Marine Engineer
Bureau of Ships
Washington, D. C.



Leslie L. Pruehs
Product Engineer.
Household Refrig.
Louisville, Ky.



B. A. Schuller
Product Engrg. Leader
A&OS
Schenectady, N. Y.



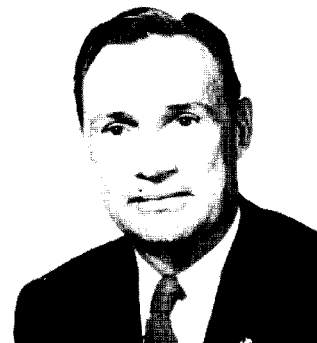
Harold Shields
Purchasing Analyst
Lge. Steam Turb. -Gen.
Schenectady, N. Y.



Douglas Solley
Engineer-Productiin Design
Household Refrig. Dept.
Louisville, Ky.



Carl Sittner
Foreman-Machine Repair
Relations & Utilities
Schenectady, N. Y.



Lee Stafford
Value Engineer
Puget Sound Naval Shipyard
Bremerton, Washington



Milton Smith
Cost Reduction Engineer
Comm. & Ind. Air Conditioning
Bloomfield, New Jersey



James Stearns
Cost Reduction Spec.
L&CE Dept.
Erie, Pa.



James Stokke
Design Engineer
Gen. Purp. Comp. Motor Dept.
Ft. Wayne, Indiana



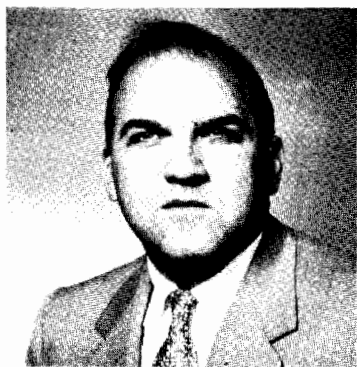
Charles Suppe
Engineer
Large Steam Turbine
Schenectady, N. Y.



M. L. Stone
Accounting
Radio & TV
Utica, N. Y.



Arthur Swanson
Cost Reduction Spec.
L. & CE Dept.
Erie, Pa.



Robert Stupp
Supv. Electrical Engineering
Knolls Atomic Power Lab.
Schenectady, N. Y.



Stephen Terpak
Supv. -Design & Prod. Engr.
Power Transformer
Pittsfield, Mass.



P. Van Der Merwe
Manager-Mfg.
South African G. E.
Johannesburg, S. A.



Nels Wickstrom
Supv. Planning & Wage Rate
Relations & Utilities
Schenectady, N. Y.



Charles Varn
Engineering Specialist
Relations & Utilities
Schenectady, N. Y.

3



Ross Whitehead
Production Engineer
Meter Dept.
Somersworth, N. H.

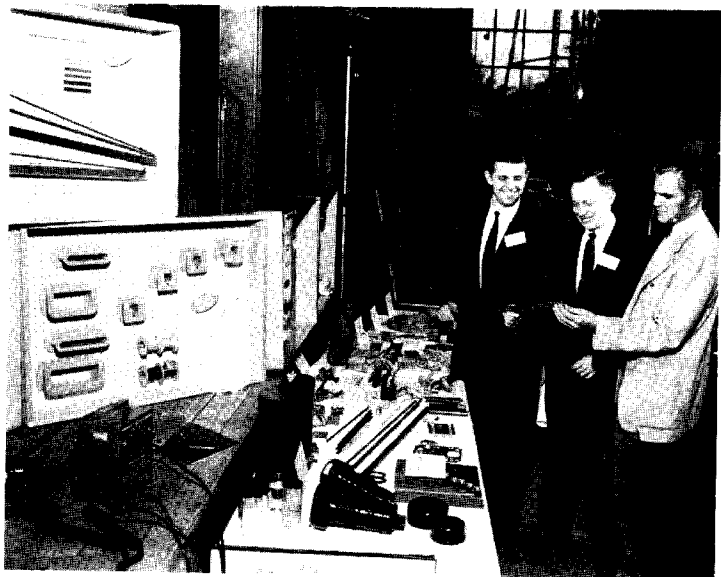
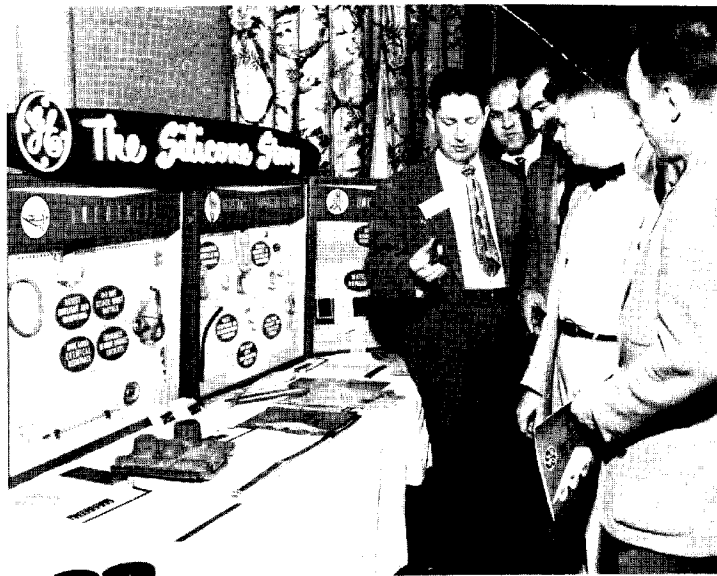
FAMILIAR WORKSHOP TABLE ACTIVITIES

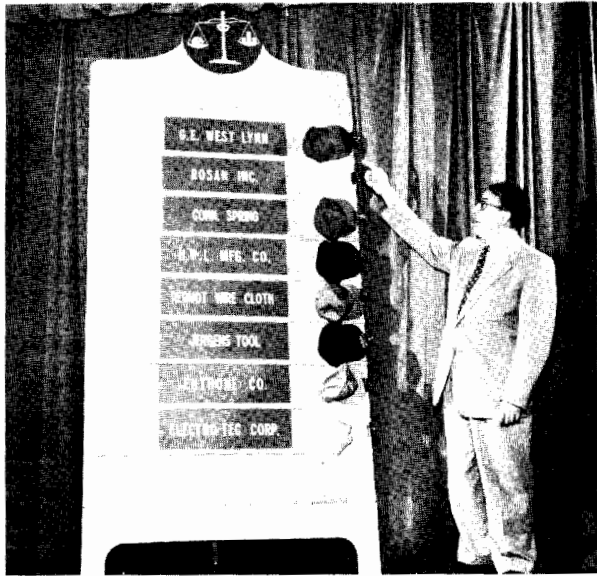




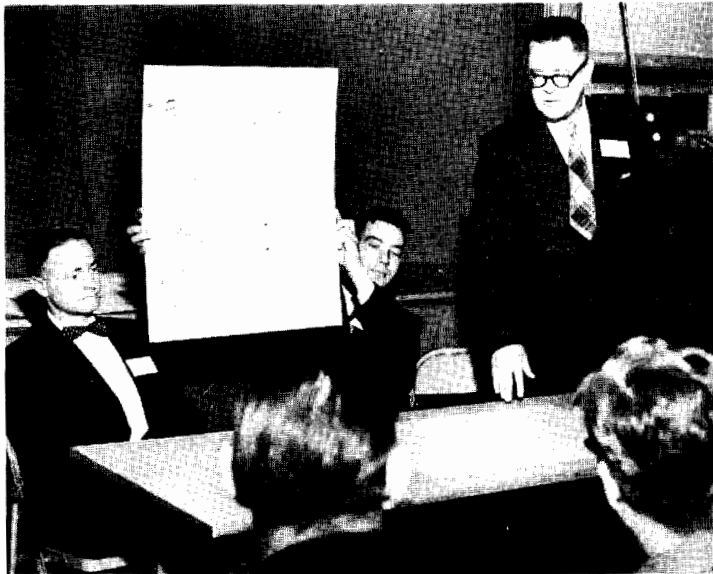
SPECIALTY SUPPLIER'S ACTIVITIES

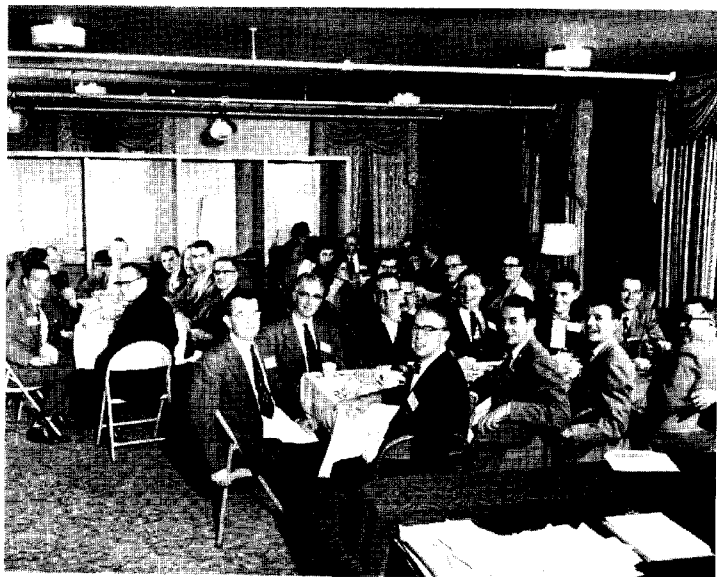






FINAL DAY ACTIVITIES





SPEAKERS

H. R. Hill

J. H. Savage

W. H. Reger

J. J. Foley

J. D. Walters

C. Fay

W. L. Newman

C. W. Bryant

H. P. Sisk

J. L. Wentworth

W. L. Healy

F. D. Schnoor

H. L. Schnell

T. J. Jordan

B. E. Michie

A. Sikorsky

H. H. Bixler

G. Holman

Dr. W. W. Gilbert

D. A. Philo

R. W. Sullivan

A. E. Wiles

B. F. Burnham

R. J. Pittman

C. M. Watt

