

Impact of Economic Recession on Labor Force: Do Gender and Ethnicity Matter?



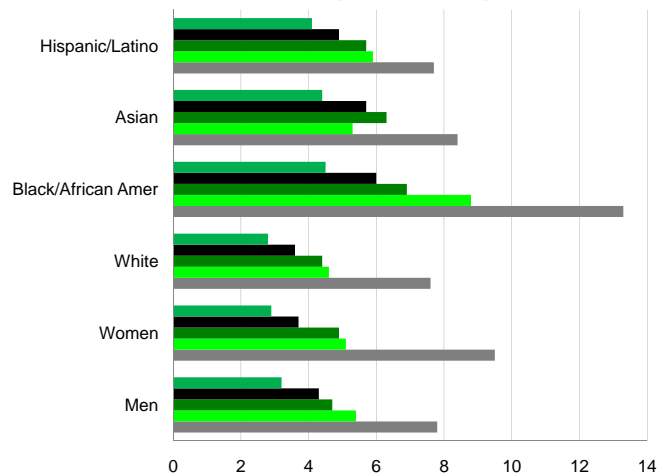
Nicole Huebner ∞ Economic Department ∞ University of Wisconsin-Eau Claire
Department of Economics Academic Mentor: Dr. Sanjukta Chaudhuri

Objective

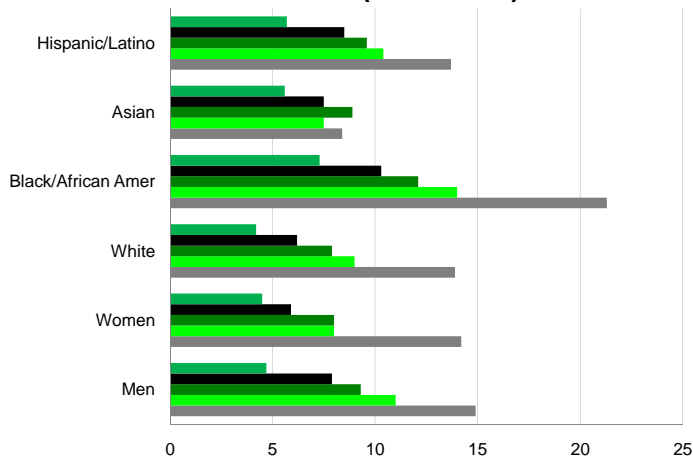
- ❖ To understand the impact of demographic and human capital variables on unemployment rate.
- ❖ Analyze marital status and impact on unemployment rate.
- ❖ Analyze education level and impact on unemployment rate.
- ❖ Develop an understanding of economic situations within social classes



2002 Unemployment Rate (Education)



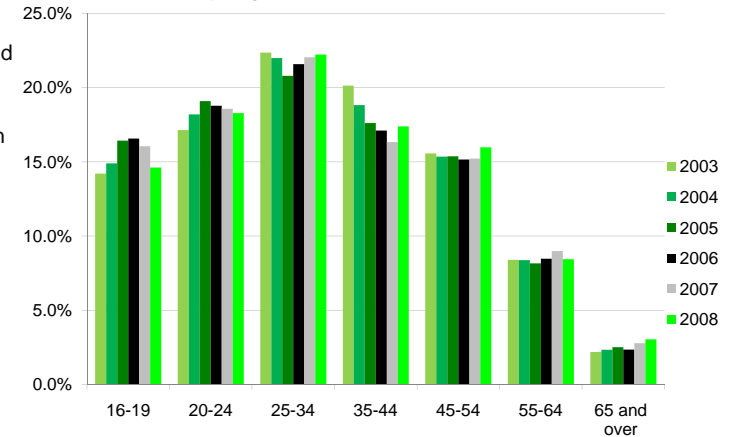
2009 Unemployment Rate (Education)



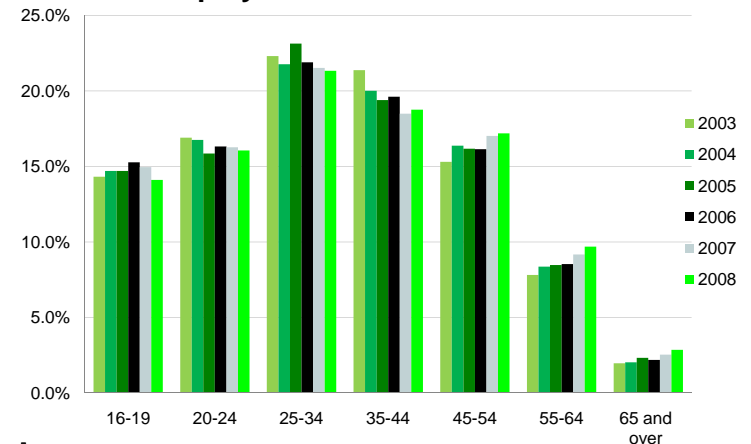
Statistical Summary

- ❖ Data was extracted from National Bureau of Economic and analyzed based on demographic aspects of lifestyle.
- ❖ Unemployment is prevalent with less education
- ❖ 2003 and 2004 shown the highest unemployment amongst men.
- ❖ 2005 and 2008 shown the highest unemployment amongst women.

Unemployment Rate Men 2003-2008



Unemployment Rate Women 2003-2008



Conclusion

- ❖ People with higher education are less likely to experience unemployment.
- ❖ African American, Hispanic and Asian ancestry are likely to face higher unemployment compared to 2002.
- ❖ Women of ethnic backgrounds are more likely to feel the effects of unemployment than men of the same ethnicities with an educational background.

Acknowledgement: Funding for this poster was provided by UWEC differential tuition

Work Cited:

<ftp://ftp.bls.gov/pub/special.requests/lf/aa2005/pdf/cpsaat31.pdf>
National Bureau of Economic Research www.nber.org/cycles