

BEST

COPY

AVAILABLE

MEDICAL SCHOOL LIBRARY
University of Wisconsin
S.M.L. Bldg. N. Charter St. Madison 6, Wis.

WISCONSIN MEDICAL ALUMNI

Quarterly

Volume six, number three • may 1966



WISCONSIN MEDICAL ALUMNI

Extra Issue

QUARTERLY

Vol. VI — May 27, 1966 — No. 3

Published quarterly on January 15, April 15, July 15 and October 15 by the Wisconsin Medical Alumni Association, Inc., 418 N. Randall Avenue, Madison, Wisconsin, 53706.

EDITORIAL BOARD

Mischa J. Lustok, M.D., '35
Silas Evans, M.D., '36
Richard Wasserburger, M.D., '46

Mischa J. Lustok, M.D., Editor
W. H. Oatway Jr., M.D., '28,
Contributing Editor
Paul Van Nevel, Associate Editor

CORRESPONDENTS

Jackman Pyre, M.D., '37, Southwest
Edward J. Lefeber, '36, Southeast

ALUMNI OFFICERS

Herbert Pohle, M.D., '38, President
D. J. Freeman, M.D., '52, President-elect
Richard Wasserburger, M.D., '46,
Secretary-Treas.
Silas Evans, M.D., '36, Director
Herbert Giller, M.D., '47, Director
Robert F. Schilling, M.D., '43, Director
Joseph R. Stone, M.D., '35, Director
Phillips Bland, M.D., '47, Past President
Frank L. Weston, M.D., '21,
Past President
Peter L. Eichman, M.D., Dean,
Ex Officio

Ralph A. Hawley, Executive Director

Send all letters to the editor, manuscripts and changes of address to the QUARTERLY, 418 N. Randall Avenue, Madison, Wisconsin, 53706, or to Editor Lustok at 836 N. 12th Street, Milwaukee, Wisconsin.

In this issue

- 2 Introduction, **Lemmer**
- 3 Teaching Award Recipients
- 4 Association Presidents
- 5 Award Recipients—1956-66
- 7 Lots of Bricks and Mortar
- 9 The House We Built
- 11 Meeting Scenes
- 14 Twenties, Thirties, Forties
- 15 Growth Figures

About the issue

This issue is an extra number of the Quarterly—the first extra ever published by the Association. The occasion is the Association's 10th anniversary.

With the exception of the introduction by Dr. Kenneth E. Lemmer, '30, the first president of WMAA, and the summary article by Dr. William H. Oatway, Jr., '28, contributing editor, the 10 years are reviewed in pictures.

Unfortunately, many of the faces in the earlier pictures were not easily identifiable and in several instances identification was impossible.

On the cover is a photo taken May 11, 1956, of the new medical library. More than any other symbol this building represents the Association and its accomplishments.

There were problems and delays including a couple of ground breakings in different places, and several designs. But the library is finished now. The result is worth the waiting; many feel the final design is the most beautiful and functional of all. Yet to be moved in the furniture and hang the bronze plaques.

Great Strides in Ten Years

BY KENNETH E. LEMMER, M.D., '30

FIRST ASSOCIATION PRESIDENT

The Wisconsin Medical Alumni Association has made great strides since its organization some years ago.

Although the Alumni Day Programs had been going on for many years, it was not until the meeting of May 29, 1955, that a special committee was appointed for the purpose of organizing the University of Wisconsin Medical School Alumni into a formal organization. The members of this committee were Doctors King Woodward of Rockford, Miles Smith of Milwaukee, Merle Owen Hamel of Madison, Sam Behr of Rockford, Robert Schilling and Kenneth Lemmer of Madison.

A meeting of this group was held at the Madison Club on September 19, 1955, with all of the above members present and in addition Dean John Z. Bowers, Alumni Secretary John Berge, and Dr. Robert Parkin. At this meeting it was decided to draw up a constitution and by-laws. In addition, it was felt that an Alumni Bulletin would be of great value, and that the first one would be issued to coincide with the meeting of May 18, 1956.

Volume 1 Number 1 of the Wisconsin Medical Alumni Journal was issued in May 1956 and contained historical material about William Beaumont with his picture on the front page and the story of Alexis St. Martin. It also included a section under Field Report, a report on two of the clinics which were Preceptorial Centers for our students, Marshfield and Monroe. In addition, it contained a profile on William P. Young and Charles W. Crumpton with an article on Atrial Septal Defects: Diagnosis and Treatment. It also had a section on cancer research at McArdle. All in all, this was quite an auspicious beginning!

That the volumes do not add up to the years is due to the fact that Volume 2 began in 1957 and carried on through 1960. However, we are again in order and our recent issues are currently Volume 6 and the name

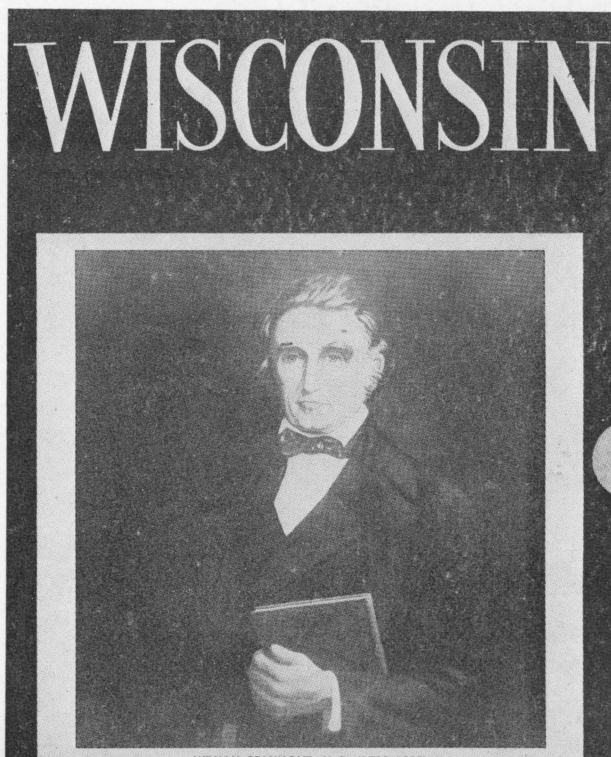
has been changed to the Wisconsin Medical Alumni Quarterly. The most recent issue of Volume 6 Number 2, Spring of 1966, contains 37 pages and a wide coverage of material of interest to the Medical School Alumni.

Just as the Journal has grown, so has the membership of our Alumni Association. Some of this is due to the enrollment of graduating seniors into the Alumni Association with a year's dues free. Another important factor is the Class Reunions which stimulate interest amongst classes.

The new Middleton Memorial Library will be the scene of the luncheon of the Alumni Association May 27 of this year, and we all can be proud of this memorial.

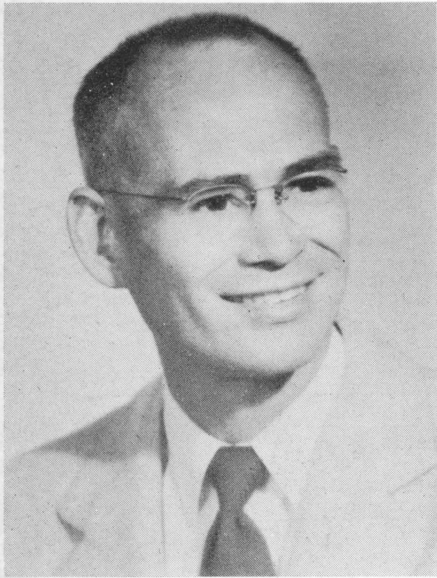
The fact that many of the members are anxious to pursue other related activities in the name of the Alumni Association is a healthy sign and these activities should be encouraged.

Vol. 1, No. 1, May, 1956



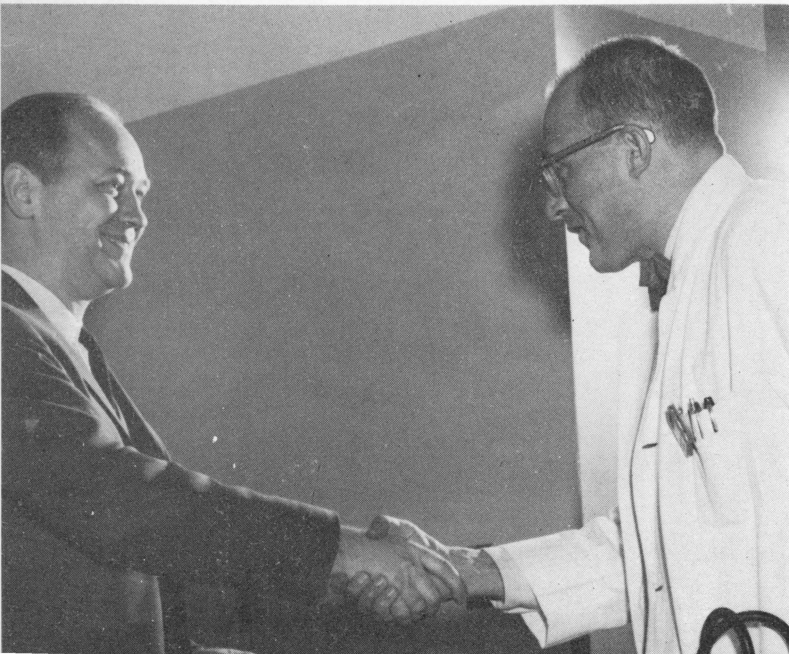
TEACHING AWARD RECIPIENTS

The Association has presented four awards to Medical School faculty members for distinguished teaching. The recipients are shown here. The selection is made by members of the senior class.

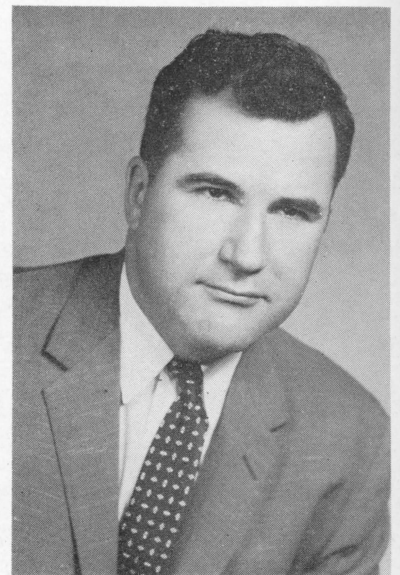


George G. Rowe, '45
1964

Richard Wasserburger, '46, right, receives award in 1965 from Dean Peter L. Eichman.



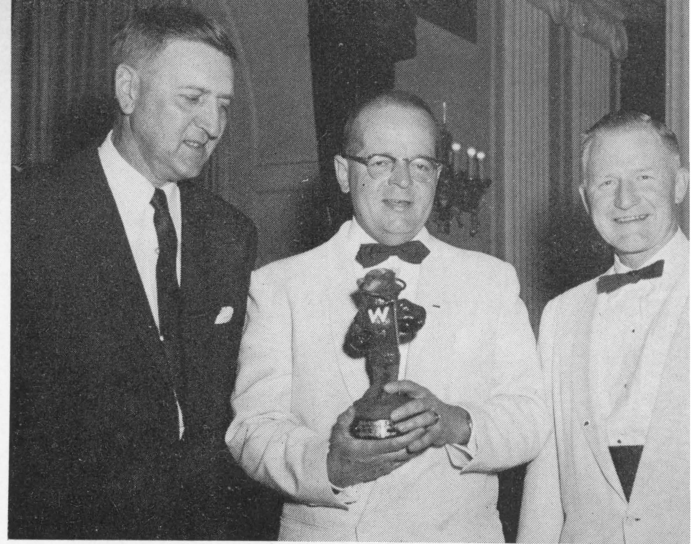
Ben M. Peckham, '41
1963



Arthur A. Siebens,
1966



The gavel changes hands between Mischa Lus-tok, '35, president in 1960, right, and Albert Martin, '35, president in 1961.



Kenneth E. Lemmer, '30, president in 1956 (left), and Einar Daniels, president in 1957 and 1958, flank former dean John Z. Bowers.

Ben Lawton, '46, president in 1962



Association Presidents

Dr. Frank L. Weston, '21, left, president in 1964, and Dr. Herbert Pohle, '38, president in 1965.



Phillips T. Bland, '47
1963



A. A. Quisling, '30
1959

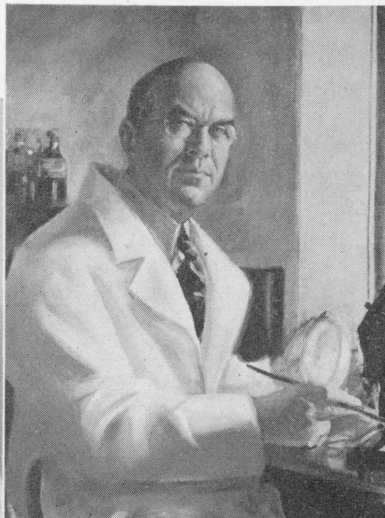
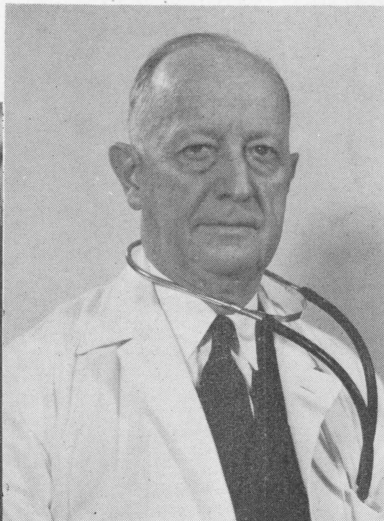


AWARD RECIPIENTS--1956-1966



Walter E. Sullivan
1960

William S. Middleton
1962



Paul F. Clark
1961

Harold Bradley
1963



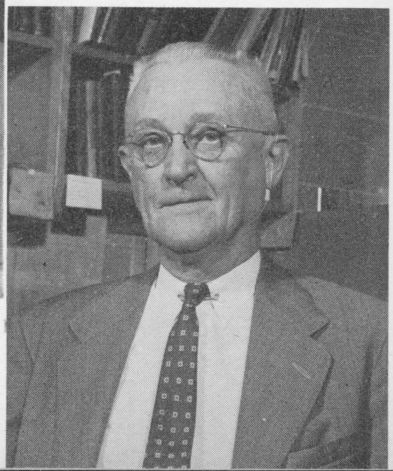
William D. Stovall
1964

H. Kent Tenney Jr.
1965



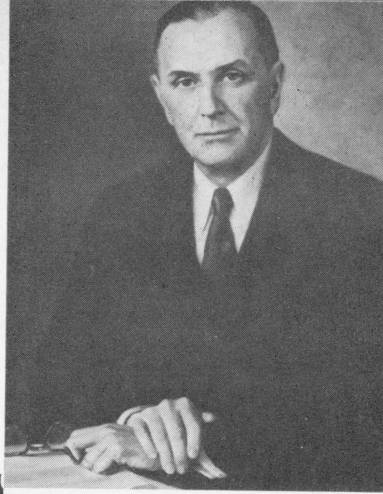
The emeritus faculty members shown here have received the Emeritus Faculty Award of the Association.

Frederick D. Geist
1966





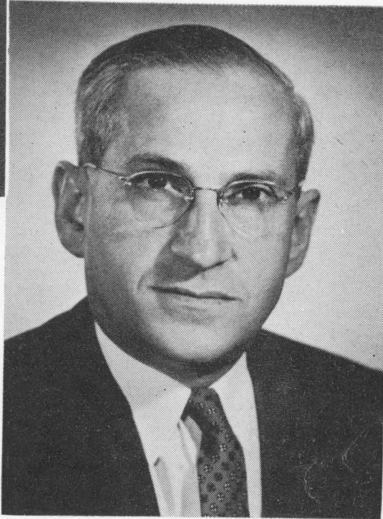
Richard S. McKittrick, '18
1959



Richard W. TeLinde, '20
1960



John L. Parks, '34
1963



Milton J. Senn, '27
1961



Roy Hertz, '39
1964

Frederick W. Madison, '24
1966



Robin C. Buerki, '17
1965

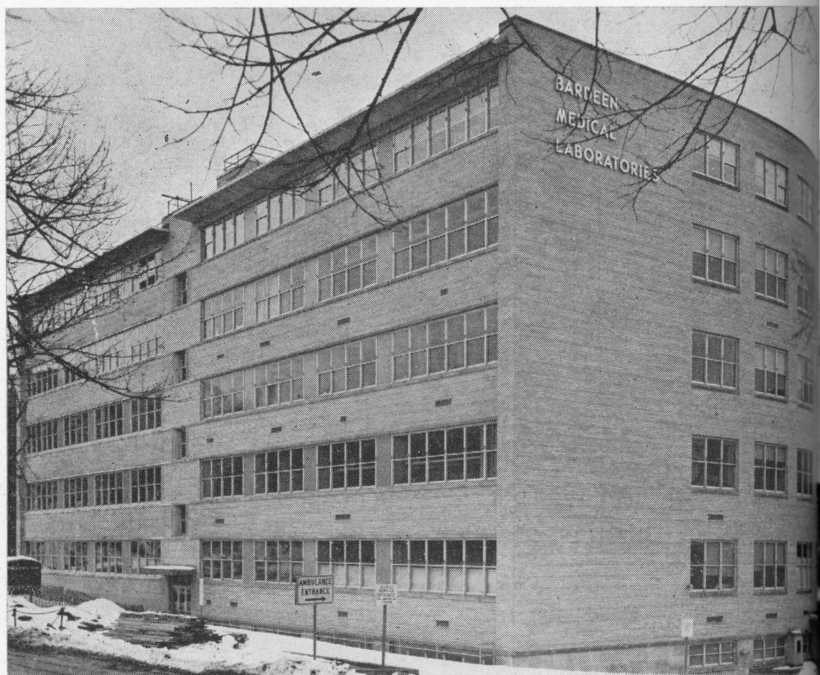
The men shown on this page are recipients of the Medical Alumni Citation, which is given annually to an alumnus who has made an outstanding contribution in some area of medicine. Missing is the picture of Dr. Henry Brosin, '33, who won the award in 1962.

LOTS OF BRICKS A

Since the Wisconsin Medical Alumni Association formed 10 years ago, the Medical School has grown rapidly. Fourteen major building projects were completed since 1956, matching the number completed in the Medical Center's first 39 years on the site.

The dollar totals are more dramatic. Since

Dr. William D. Stovall, left, former head of the State Lab of Hygiene, and the late Drs. Erwin Schmidt, center, long time head of surgery, and T. H. Bast, professor of anatomy, stand in front of the old intern-resident quarters, which were razed in 1958 to make room for the Medical Science Building.



The Bardeen Laboratories and the Medical Sciences Building (left doorway) were built in 1958 and 1960. The new facilities gave the Medical School's basic science departments more space, and enabled anatomy to move over from Science Hall—the department's home for 51 years.



The Genetics Building, finished in 1960, is the home for the medical genetics and human genetics departments. It is on Henry Mall just north of old Wisconsin High

MORTAR

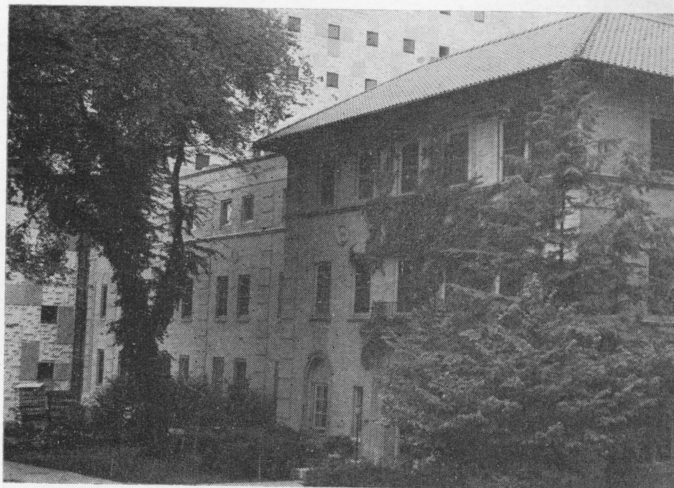
1956, building projects, excluding minor remodeling, have cost \$12,656,000. The total cost of building the plant which existed in 1956 was \$9,429,153.

Buildings added to the Medical Center since 1956 are the Bardeen Laboratories, Medical Sciences Building, Genetics Building, the Neurological and Rehabilitation Hospital, McArdle Laboratory, and the Medical Library.

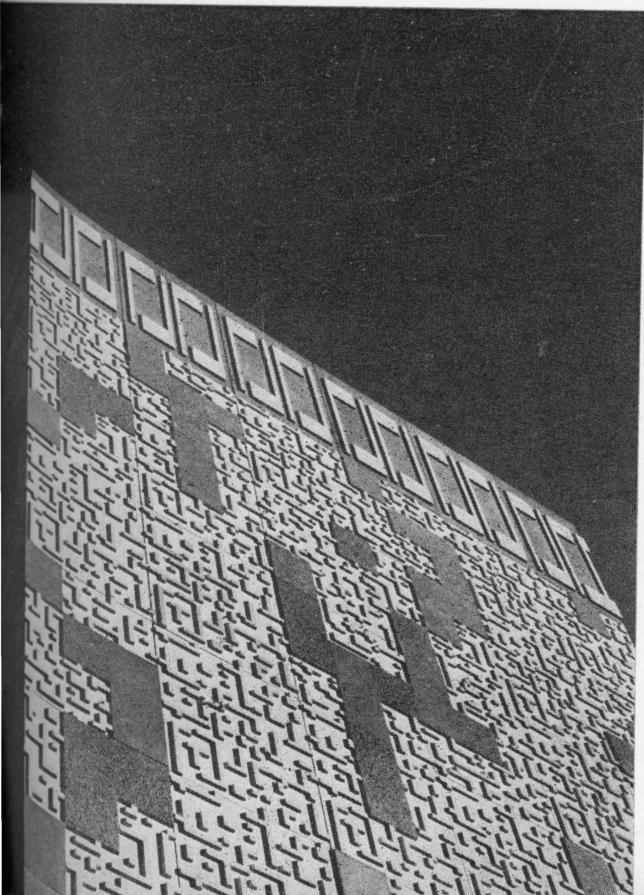
Three floors were added to the Hospital's B and C Wings. A floor was added to the Children's Hospital, and a Radiotherapy Center was built, and an outpatient addition made. The other three projects were all major remodeling tasks.



The Neurological and Rehabilitation Hospital at 1954 E. Washington Ave., was purchased by the state in 1962 to solve some of University Hospital's space problems. The building contains the rehabilitation center and the neurology services.



A third floor was added to Children's Hospital's south wing in 1963 to house the Joseph P. Kennedy Laboratory for Mental Retardation Research.



McArdle Laboratory for Cancer Research—the oncology department's second building—was completed in 1964. The building of 11 stories was financed primarily by the federal government.



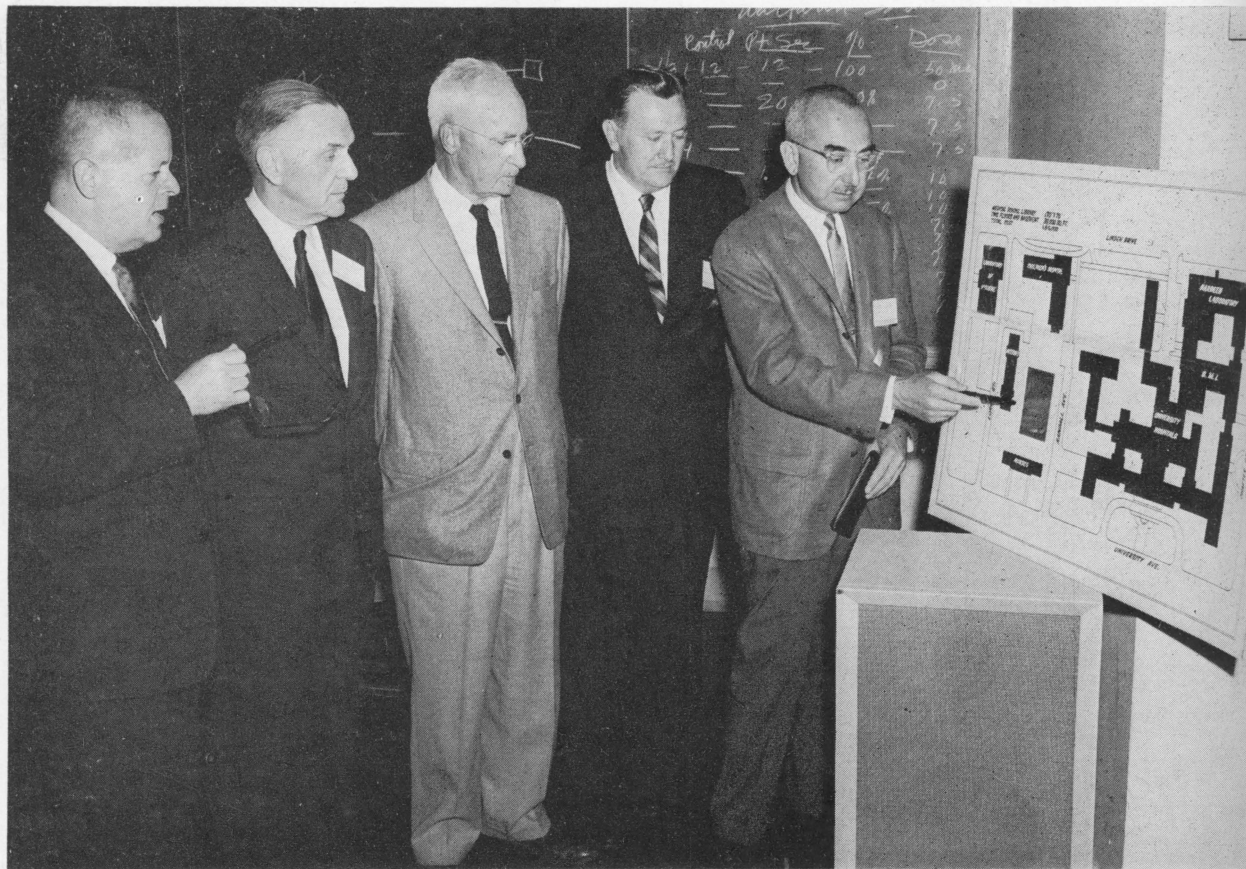
The office of Miss Helen Crawford, medical librarian, was one good reason to build a new medical library.

THIS IS THE HOUSE WE BUILT

The drive by alumni to build a medical library in honor of former dean William S. Middleton has been one of the major forces in the formation of the Wisconsin Medical Alumni Association.

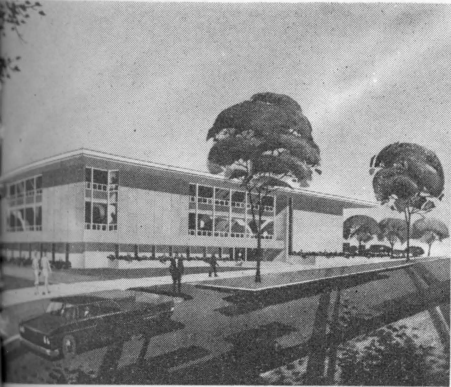
A new site! Originally planned for Linden Drive, the library site was changed in 1960 to Randall Avenue, behind the nursing dorm. Mischa Lustok, '35, points out the site to Drs. John Z. Bowers, left, then dean, Dr.

R. W. TeLinde, '20, Dr. Walter Sullivan, emeritus faculty member, and Dr. A. A. Quisling, '30. (The library ended up on Linden Drive).

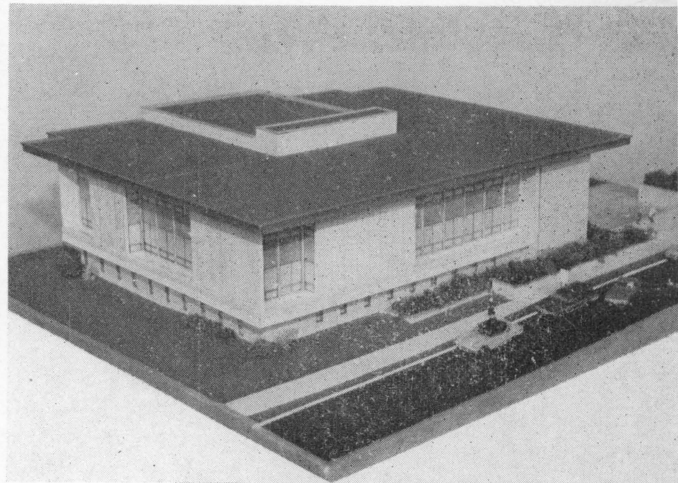




1958—Plans were made to build this structure.

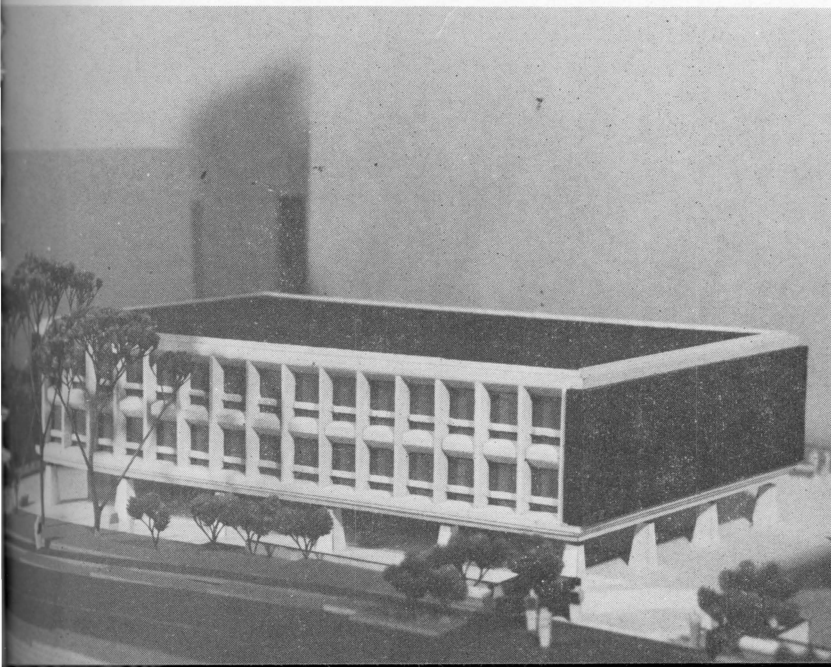


1961—A new design.



1962—This model was proposed.

1966—This model made it.





Registration headquarters during Homecoming meeting in Madison, 1964.

Association Meeting Held Spring, 1960

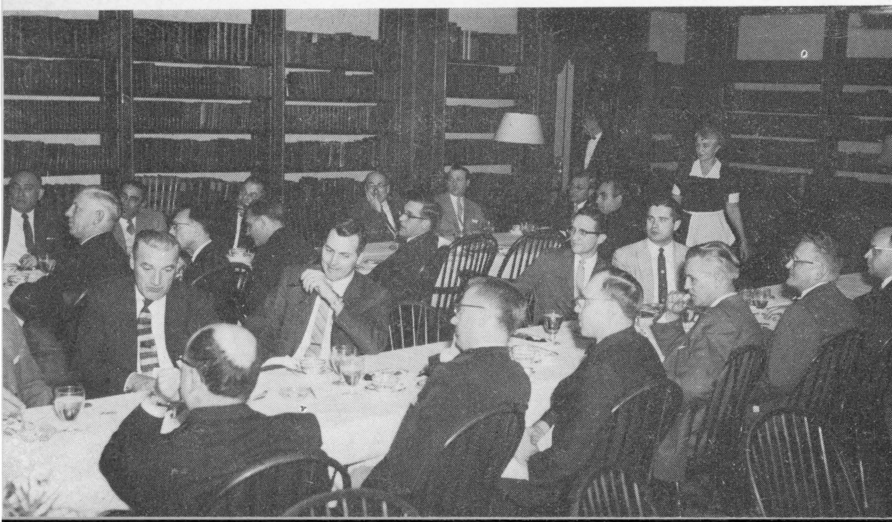


Addie M. Schwittay, '31, at Alumni Day.



At the Homecoming Meeting, November, 1960, alumni talk with faculty member George G. Rowe, '45, professor of medicine, right.

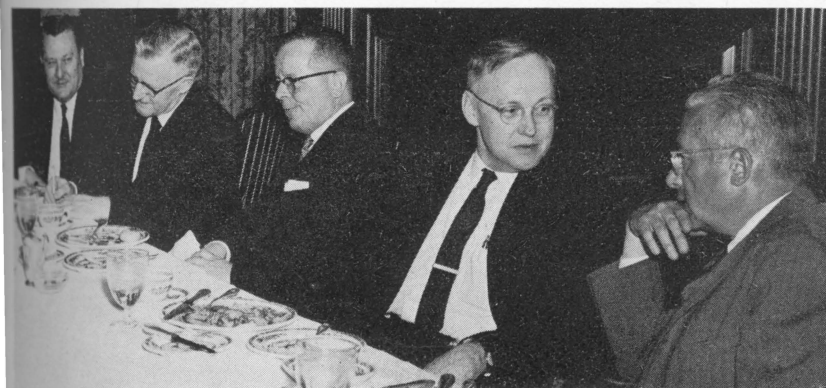
Milwaukee Winter Meeting, 1960.



gs
er, Fall, Winter

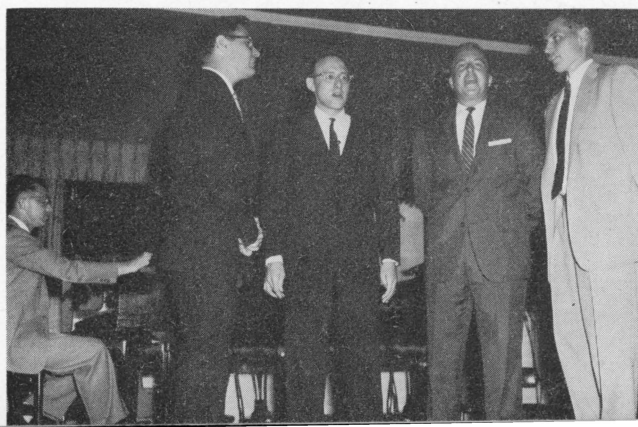


Dean Middleton greets alumni at Alumni Day, 1963.



Drs. Abe Quisling, Einar Daniels, John Bowers, James Crow and Howard Lee at the head table during the Milwaukee Winter Meeting, 1959.

Alumni Day, 1958—Serenade by student Medico-choir members (from left) John Mielke, John Wymann, William Cotanch and Lowell Froker. Pianist is Glenn Vandervort.



More on Meetings

The Class of 1941 celebrates its 20th anniversary reunion during Alumni Day, 1961.



Dr. Oliver E. Tjoflat, '29, right, discusses St. Louis weather with other alumni during a recent alumni day.



The Twenties, Thirties and Forties

By WILLIAM H. OATWAY JR., M.D., '28

CONTRIBUTING EDITOR

No one knows the entire story about the alumni organization, and if anyone tried to tell it he would omit some of the most responsible persons.

The records can show the dates of the early meetings, and the officers, but the spirit that made the School go, and that finally resulted in meetings and programs and publications, is harder to define and pinpoint.

I think the records show that a School was legislated into a possibility in 1848, but never was formed or founded. Transient schools were started in several cities, but never at the University.

Gradually a few people began to aim at a School by preparing for basic sciences. Drs. Birge, William Snow Miller and others were pioneers in the turn of the century era. Several famous faculty names were at work by 1910 when Dr. Joseph (Uncle Joe) Evans came to get ready for a preclinical school.

Wisconsin was small, which made for close contacts. The classes were almost all held in old science hall, which kept people together. The red brick student health clinic was only a step away on Langdon Street.

The professors (and instructors, and deans, and secretaries) were all personalities, giants in our eyes, and sometimes characters. This stimulated a great loyalty, with a store of memories which tied the graduates to Wisconsin, even when they went elsewhere at the end of the second year.

The first mixing of "Pure Wisconsin" and the nearby world was a small venture to the Jackson Clinic (Methodist Hospital), the Madison General, the Dean group (St. Mary's), and this paved the way for the larger changes to other schools. Most of the students were from Wisconsin, but they were diluted slightly and gradually by out-of-staters.

The founding and construction of the Wisconsin General Hospital made the largest change in methods of medical education (and preparation for alumni organization). The

mid-twenties let some of the students continue at Wisconsin. It allowed interns and residents to come in, for a contrast. It allowed, by reciprocity, Wisconsin graduate M.D.'s to go elsewhere.

Somewhere along the way the preceptors played their part, showing students the usual ways of private and group practice and giving them a closer view of patients. The interest and loyalty to Wisconsin of the preceptors was a fine example to the students.

There were dozens of medical teachers through the years, and long-term dedication to Wisconsin could not help but be impressive to their students. One risks omitting many while mentioning Drs. Evans and Bunting and Clark and Miller and Van Valzah and Sevringhaus and Blankenship, Burns, Harris, Reese, Pohle, Gonce, Weston, Puestow, Schmidt, Gale, Mowry, Meek, Eyster, Loevenhart, and all their junior colleagues.

The name omitted from the list above is probably the basic stuff from which the alumni association was woven—Dr. William S. Middleton. No one passed through the preclinical years, and then the clinical era, from 1914 to the fifties (and even today, from a slight distance) without feeling the stimulating, challenging (and betting), driving, leading influence of Dr. Middleton.

Let someone else tell of the pleasant, solid, useful alumni association. It keeps us informed, and wishing we could get back to Madison twice a year. All I can say are a few hundred sentimental words about times and people, and that I was proud to spend a dozen years where young medics had a chance to get into a job, and work as hard as they could, and try to carry on the ways of their seniors.

Example—Joe Gale telling Dr. John Jones of Los Angeles, who was praising the surgery of his future partner Bert Meyer, "That was his hundredth resection!"

You can bind the classes together with pictures, directories and meetings, but admiration and close contact are the cement.

Wisconsin Medical Alumni Assn.
University of Wisconsin Medical School
418 North Randall Avenue
Madison, Wisconsin 53706

Non-Profit Org.
 U. S. POSTAGE
PAID
 Madison, Wis.
 Permit No. 1046



GROWTH FIGURES

WISCONSIN MEDICAL ALUMNI ASSOCIATION MEMBERSHIP AND DUES COLLECTED 1956-1966		
<i>Year</i>	<i>No. of People Paying Dues</i>	<i>Total Amount Collected</i>
1956-57*	261	\$2,772.00
1957-58*	64	447.50
1958-59*	No Record	No Record
1959-60	1,651	8,255.00
1960-61	1,570	7,860.00
1961-62	1,685	8,422.00
1962-63	1,739	8,693.50
1963-64	1,878	9,388.00
1964-65	1,943	9,715.00
1965-66	1,688**	15,865.00***

* Alumni were not billed for dues until the Association was incorporated in 1958.
 ** Dues are still being received.
 *** Higher amount is due to an increase in dues in 1965-66.

UNIVERSITY OF WISCONSIN MEDICAL SCHOOL APPLICATIONS & ADMISSIONS 1956-1966		
<i>Year</i>	<i>Applicants</i>	<i>Admissions</i>
1956	235	84
1957	244	90
1958	159	100
1959	293	88
1960	285	94
1961	383	94
1962	446	100
1963	604	100
1964	694	100
1965	745	100
1966	717	100

UNIVERSITY OF WISCONSIN MEDICAL SCHOOL INCREASE IN GRADUATE STUDENTS	
<i>Year</i>	<i>Number</i>
1958	95
1963	202
1966	308

UNIVERSITY OF WISCONSIN MEDICAL SCHOOL INCREASE IN FULL-TIME FACULTY	
<i>Year</i>	<i>Number of Fulltime faculty</i>
1953	101
1958	164
1963	190
1966	229