

Scanning tunneling microscopy and tunneling luminescence of the surface of GaN films grown by vapor phase epitaxy

B. Garni, Jian Ma, N. Perkins, Jutong Liu, T. F. Kuech, and M. G. Lagally^{a)}
University of Wisconsin–Madison, Madison, Wisconsin 53706

(Received 15 November 1995; accepted for publication 2 January 1996)

We report scanning tunneling microscopy (STM) images of surfaces of GaN films and the observation of luminescence from those films induced by highly spatially localized injection of electrons or holes using STM. This combination of scanning tunneling luminescence with STM for GaN surfaces and the ability to observe both morphology and luminescence in GaN is the first step to investigate possible correlations between surface morphology and optical properties. © 1996 *American Institute of Physics*. [S0003-6951(96)02110-1]

Gallium nitride (GaN) is of great interest because of its potential as a material for the development of light-emitting devices in the blue and ultraviolet spectral region.^{1–3} Extensive investigations have been done on GaN from different perspectives, most of which have been focused on the exploration of appropriate substrates and growth conditions needed to yield materials suitable for electroluminescent devices. Films of GaN have been grown on various substrates by several techniques including molecular beam epitaxy (MBE),⁴ and different forms of vapor phase epitaxy (VPE).^{5,6}

GaN normally crystallizes with the hexagonal wurtzite structure (α -GaN),^{2,7} although it can also be synthesized in the cubic zinc-blende phase (β -GaN). The techniques utilized in characterizing GaN include x-ray diffraction, I - V characteristics, photoluminescence, reflection high-energy electron diffraction (RHEED), and Auger electron spectroscopy (AES). For both MBE and VPE growth, we still lack an understanding of the surface morphology of GaN, especially the initial stage of nucleation and its impact on subsequent film growth. Additionally, little is known about the intrinsic properties of GaN surfaces, restricting our ability to control the surface composition and structure during processing.

Previous studies of GaN surfaces were limited to the employment of RHEED and AES⁸ to evaluate long-range order during film growth, and to the study of the effect of sputtering/annealing on N depletion. Recently, atomic force microscopy (AFM) observations of GaN nucleation layers⁹ and of the influence of open core screw dislocations on the surface morphology of GaN films⁶ have been reported. However, there have as yet been no reports on the use of scanning tunneling microscopy (STM) or scanning tunneling luminescence (STL) measurements for GaN.

In this letter, we report on STM and STL studies of GaN films. Our results demonstrate the use of STM to investigate the surface morphology of GaN. The observed luminescence establishes the use of STL to probe the local surface optical properties of GaN.

STL has recently been proven to be an effective tool in probing local optoelectronic properties.^{10–16} Our STM and STL experiments were performed in a custom-built STM/STL UHV chamber¹⁷ with a base pressure of better than

1×10^{-10} Torr. STM/STL tips are made from 0.25 mm diameter tungsten wire by means of electrochemical etching. In STL, the tip is used as a highly localized source of electrons or holes to induce luminescence in the material. The emitted photons are collected by a lens mounted on the microscope base, positioned at 60° with respect to the sample surface normal, with a solid angle of collection of approximately 1 steradian. The collected light is directed to a lens outside the chamber that focuses it onto a cooled GaAs cathode photomultiplier tube (PMT). The spectral range for our collection/detection apparatus is approximately 320 nm–900 nm, and $\sim 0.8\%$ (at 360 nm) of the total emitted light from the surface can be transmitted to the PMT. Photon counting continues while rastering the tip in a constant-current tunneling mode, allowing both topological and position dependent luminescence data to be acquired simultaneously, giving the capability to correlate luminescence intensity with surface morphology.

GaN samples were grown on (0001) sapphire in a 60 mm diameter horizontal hot-wall two-temperature-zone halide vapor phase epitaxy (HVPE) reactor.⁵ In the first zone, typically operated around 850 °C, the reaction of MBE-grade 99.9999% Ga metal with high grade HCl gas in a N₂ carrier gas results in GaCl and H₂ gas reaction products. These products are transported downstream to the second reaction zone, where NH₃ is introduced. The reaction of GaCl with NH₃ produces GaN on the substrate surface, liberating HCl and H₂ as reaction by-products. This second zone is usually operated at ~ 1040 °C. Films used for this study were produced under a total flow of 10 standard liter per minute, of which 880 standard cc per minute (sccm) was NH₃ and 29.4 sccm was HCl. The rate of film growth is about 1.8 μm per minute. Following the growth, the sample is slowly withdrawn from the hot zone under a NH₃ atmosphere until the sample has cooled. The reactor is then purged under N₂, and the sample is removed for characterization. Epitaxial α -GaN films grown in this manner are naturally n -type, with a (0001) orientation. The films have a small azimuthal mosaic spread of $\sim \pm 200$ to 450 arcsec. The dislocation density is expected to be high.⁶ The films have a band gap of 3.37 eV, as determined by our separate photoluminescence measurements. They exhibit a low reactivity to surface contamination or chemical modification, and are stable enough to be transported from the growth chamber to other chambers

^{a)}Electronic mail: lagally@engr.wisc.edu

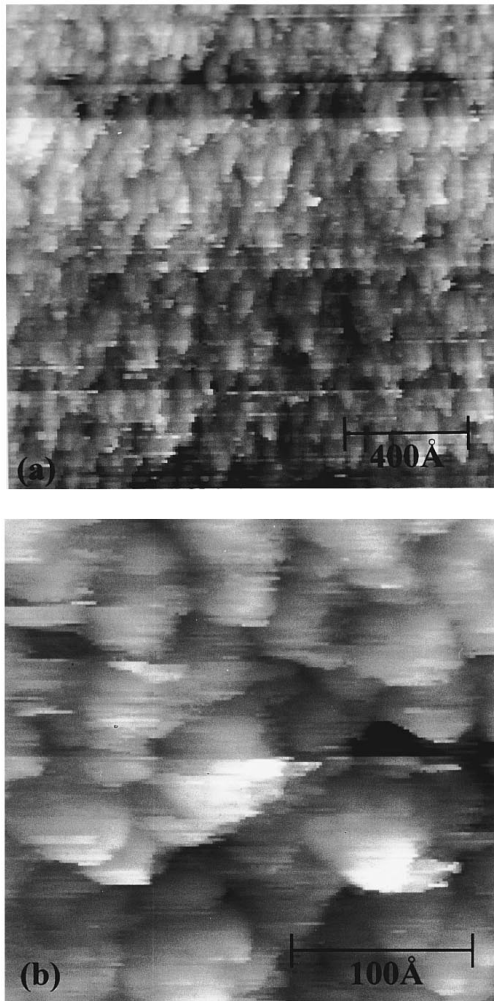


FIG. 1. Scanning tunneling microscopy (STM) images of the surface of VPE grown GaN(0001) films; (a) $1650 \times 1650 \text{ \AA}$ and (b) $270 \times 270 \text{ \AA}$. The data were taken with the tip biased at 4.8 V with respect to the sample with a constant tunneling current of 5 nA.

for characterization without the need for extensive surface cleaning. X-ray photoelectron spectroscopy studies performed after such transport show monolayer amounts of C and O contamination.¹⁸

Figure 1 shows $1650 \times 1650 \text{ \AA}$ (a) and $270 \times 270 \text{ \AA}$ (b) STM images of the surface of a nominally $\sim 20 \mu\text{m}$ thick GaN(0001) film. In order to prevent inadvertent modification of the as-grown surface, we performed no *in situ* cleaning in the STM chamber, relying on the natural passivity of the GaN surface to allow STM imaging. The images in Fig. 1 were taken at a tip bias voltage of 4.8 V with a tunneling current of 10 nA resulting in the injection of holes into the near-surface region. A high bias voltage is needed for imaging because GaN has a fairly wide band gap. At low magnification [Fig. 1(a)], we observe an array of relatively flat areas with seemingly random edges. The high-magnification image shown in Fig. 1(b) reveals the roughness of the GaN surface at the near-atomic scale. The bright flat areas correspond to the topmost GaN layers; they have sizes between ~ 50 and 120 \AA . The height between two adjacent terraces varies between 10 and 20 \AA , which corresponds to 4–8 atomic layers. We obtain similar images with bias voltages of 4.8 V, 6.0 V, and 9.0 V, although resolution is reduced at the

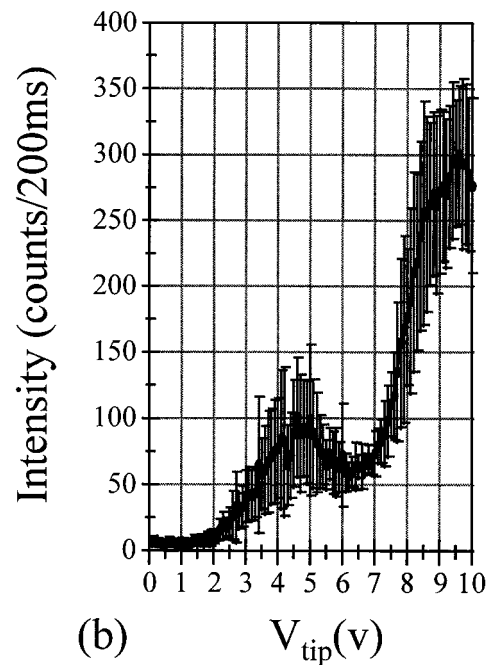
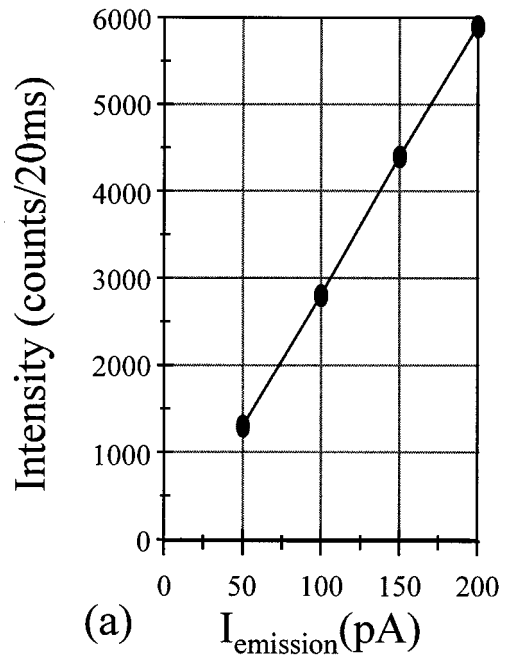


FIG. 2. Spatially localized luminescence intensity from GaN(0001). (a). Cathodoluminescence using field emission from the STM tip. Dependence of the luminescence intensity on the emission current. The tip is $1 \mu\text{m}$ from the sample and its potential is $\sim -150 \text{ V}$ with respect to the sample. (b). Tunneling mode with hole injection. Dependence of luminescence intensity on the tunneling voltage at a constant tunneling current.

higher bias voltages. At this stage, we have not yet obtained atomic resolution, most probably because of the submonolayer of C and O contamination.¹⁸

Luminescence measurements were made in two ways. In the cathodoluminescence mode, the tip is retracted to $\sim 1 \mu\text{m}$ above the sample surface and a voltage of $\sim 150 \text{ V}$ is applied between tip and sample, producing a beam of electrons that easily overcomes the tunneling barrier, but nevertheless is spatially very localized. In the tunneling mode, the tip is in the usual position for topographic measurements,

~ 10 Å from the surface, the bias voltage is of the order of several volts, and electrons tunnel either into or out of the solid. The spatial extent at the point of injection is the same as in STM. Figure 2 shows the luminescent intensity for a GaN film in both cases. Figure 2(a) shows the dependence of the cathodoluminescent intensity on field emission current. The tip is held at a constant distance. Small changes in the tip-sample voltage (here 143–151 V) change the field emission current. A linear dependence on beam current is observed, as expected. We obtained similar current-luminescence profiles in different regions of the sample. We have so far not measured the spectral distribution of the cathodoluminescence or the tunneling luminescence, but assume that most of the light comes in the band (364 nm) expected for GaN.

Figure 2(b) shows the dependence of the luminescent intensity on the tip voltage in the tunneling mode with the sign of the bias corresponding to hole injection. The measurement is made at fixed lateral position of the tip, but with changing vertical position so as to maintain a constant tunneling current as the voltage is varied. The figure shows an average over 12 measurements; the error bars indicate the variation in the measurements. A simple-minded explanation of the process of the tunneling luminescence may be obtained in the following manner.¹³ The tunneling current will mimic the joint density of states (JDOS) of the GaN valence band and metal tip valence band as electrons tunnel into the metal tip. The holes in GaN will rapidly thermalize to the top of the valence band. Luminescence occurs through recombination of the holes with electrons at the bottom of the conduction band. With those highly doped *n*-type samples, the Fermi level (E_f) will be very near the conduction band edge, and we should observe a threshold of luminescence at ~ 3.37 eV (the band gap of GaN). Some luminescence actually begins to appear above ~ 2 eV, suggesting possible deep-level electron trap states in the band gap, in agreement with our photoluminescence measurements.¹⁹ Near the threshold, the luminescence intensity has a V^2 dependence, consistent with STL observations on $\text{Al}_x\text{Ga}_{1-x}\text{As}$.¹³ The intensity beyond the threshold increases, but dips slightly near 6.0 eV. Calculations of the density of states of GaN, as well as photoemission measurements,⁸ give a shape that has a local minimum 3.5 eV below the top of the valence band. The dip we observe in the luminescence corresponds qualitatively to this dip in the valence band DOS. Beyond about 8.0 eV, the intensity shows a monotonic increase, as we begin to reach the field emission region, as for cathodoluminescence.

We have also made two-dimensional maps of the tunneling luminescence. Because the intensity is weak, the images are still quite noisy. Although the luminescence images show

features that are reproducible from one scan to the next, we see at this stage no obvious correlation to the morphology observed by the STM. The resolution of STL relative to STM is an open question. Because the mean free path of electrons and holes before recombination may be large, the spatial resolution of STL at first glance is expected to be considerably poorer than that of STM. On the other hand, our calculations show that a high recombination site density at the surface or at defects may greatly enhance the resolution of the luminescence.¹⁹ At this stage we also do not know to what extent the slight surface contamination affects the luminescence. We are continuing to assess these questions.

In summary, we have succeeded in imaging GaN films with STM and detecting its localized luminescence with STL for the first time. The step morphology of the surface has been observed. The success of STL experiments on GaN opens up the possibility of studying correlations of surface morphology and defect structure with local optical properties of GaN.

This work was supported by ONR, Physics and by NSF Grant No. DMR.91-21074, the Naval Research Laboratory, and the ARPA URI on Visible Light Emitters.

¹R. F. Davis, Proc. IEEE **79**, 702 (1991); Physica B **185**, 1 (1993), and references therein.

²J. I. Pankove, Mater. Res. Soc. Symp. Proc. **97**, 409 (1987).

³I. Akasaki, H. Amano, N. Koide, M. Kotaki, and K. Manabe, Physica B **185**, 428 (1993).

⁴D. E. Lacklison, J. W. Orton, I. Harrison, T. S. Cheng, L. C. Jenkins, C. T. Foxon, and S. E. Hooper, Appl. Phys. Lett. **78**, 1838 (1995), and references therein.

⁵H. P. Maruska and J. J. Tietjen, Appl. Phys. Lett. **15**, 327 (1969).

⁶W. Qian, G. S. Rohrer, M. Skowronski, K. Doverspike, L. B. Rowland, and D. K. Gaskill, Appl. Phys. Lett. **67**, 2284 (1995).

⁷D. Elwell, R. S. Feigelson, M. M. Simkins, and W. A. Tiller, J. Cryst. Growth **66**, 45 (1984).

⁸R. W. Hunt, L. Vanzetti, T. Castro, K. M. Chen, L. Sorba, P. I. Cohen, W. Gladfelter, J. M. Van Hove, J. N. Kuznia, M. A. Khan, and A. Franciosi, Physica B **185**, 415 (1993), and references therein.

⁹D. Kopolnek, X. H. Wu, B. Heying, S. Keller, B. P. Keller, U. K. Mishra, S. P. DenBaars, and J. S. Speck, Appl. Phys. Lett. **67**, 1541 (1995).

¹⁰J. K. Gimzewski, B. Reihl, J. H. Coombs, and R. R. Schlittler, Z. Phys. B **72**, 497 (1988).

¹¹D. L. Abraham, A. Veider, Ch. Schönenberger, H. P. Meier, D. J. Arent, and S. F. Alvarado, Appl. Phys. Lett. **56**, 1564 (1990).

¹²S. F. Alvarado, Ph. Renaud, D. L. Abraham, Ch. Schönenberger, D. J. Arent, and H. P. Meier, J. Vac. Sci. Technol. B **9**, 409 (1991).

¹³P. Renaud and S. F. Alvarado, Phys. Rev. B **44**, 6340 (1991).

¹⁴S. Ushioda, Solid State Commun. **84**, 173 (1992).

¹⁵L. Samuelson, A. Gustafsson, J. Lindahl, L. Montelius, M.-E. Pistol, J.-O. Malm, G. Vermeire, and P. Demeester, J. Vac. Sci. Technol. B **12**, 2521 (1994).

¹⁶V. Sivel, R. Coratger, F. Ajustron, and J. Beauvillain, Phys. Rev. B **51**, 14598 (1995).

¹⁷B. Garni, Ph.D. thesis, University of Wisconsin–Madison, 1996 (unpublished).

¹⁸Jian Ma, B. Garni, and M. G. Lagally (unpublished).

¹⁹J. Liu and T. Kuech (unpublished).