

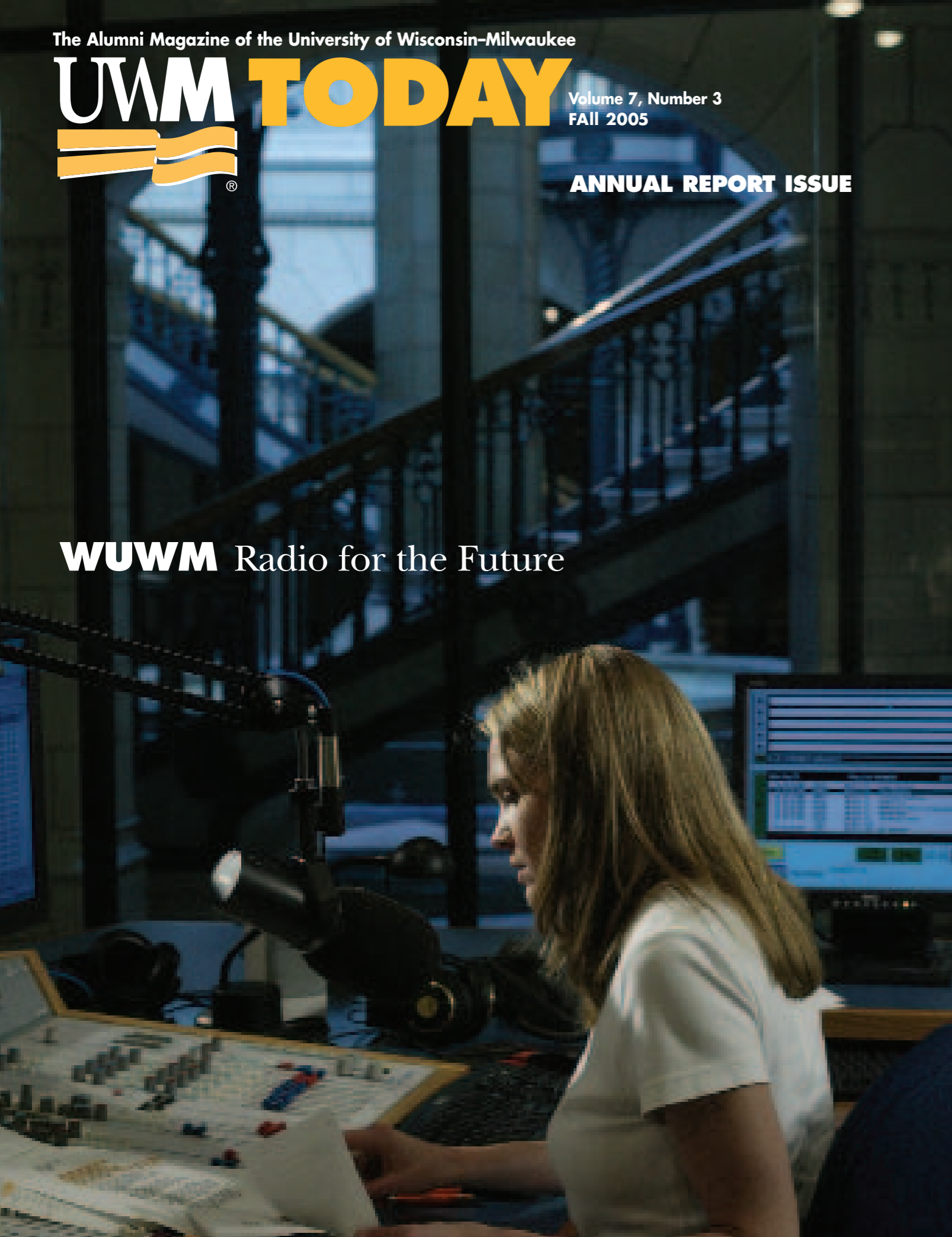
The Alumni Magazine of the University of Wisconsin-Milwaukee

**UWM TODAY**

Volume 7, Number 3  
FALL 2005

**ANNUAL REPORT ISSUE**

**WUWM** Radio for the Future



For all the latest UWM news and events, visit our Web site at: [www.uwm.edu](http://www.uwm.edu)

## TABLE OF CONTENTS

- 2** FROM THE CHANCELLOR
- 3** COMING UP
- 4** NEWS & NOTES
- 8** WUWM: RADIO FOR THE FUTURE
- 13** THE MARCUS PRIZE: A MILESTONE FOR UWM
- 16** PANTHERFEST 2005
- 19** UWM ALUMNI ASSOCIATION AWARDS
- 22** MEET ANDREA SIMPSON
- 22** UWM ALUMNI ASSOCIATION ANNUAL REPORT
- 24** UWM FOUNDATION ANNUAL REPORT
- 27** UWM ANNUAL REPORT
- 28** CLASS NOTES



Vol. 7, No. 3, Fall 2005

Chancellor: Carlos E. Santiago  
 Executive Director of the UWM Alumni Association and Director of Alumni Relations: Andrea Simpson  
 Vice Chancellor for Development and Executive Director of the UWM Foundation: Lucia Petrie  
 Vice Chancellor for University Relations and Communications: Tom Luljak ('95)  
 Editor: Nancy A. Mack ('71)  
 Assistant Editor: Laura L. Hunt  
 Designer: Ellen Homb ('82), e & company  
 Photography: Pete Amland and Alan Magayne-Roshak ('72), UWM Visual Imaging

UWM TODAY is published three times a year for alumni and other friends of the University of Wisconsin-Milwaukee. Send correspondence and address changes to: UWM TODAY, Alumni House, P.O. Box 413, Milwaukee, WI 53201-0413. Phone 414-906-4640 (toll-free 877-564-6896). ISSN: 1550-9583

Not printed at taxpayer expense.

Cover: WUWM News Producer Christina Shockley focuses on her next broadcast as light streams down the rotunda of the Plankinton Building in downtown Milwaukee.

Cover photography by Alan Magayne-Roshak '72

## from the CHANCELLOR

### OUR ACHIEVEMENTS OF THE PAST YEAR DEMONSTRATE OUR READINESS FOR THE FUTURE



**A**s we welcome students back for the fall semester, we do so with a sense of achievement for what we have accomplished and an awareness of the challenges standing before us. Because of the former, I know we will be successful with the latter.

During 2004-05, there were so many significant projects and processes advanced and accomplished right here on campus. We saw the unveiling of the Wisconsin Institute for Biomedical and Health Technologies, continuing expansion of the Research Experience for Undergraduates program funded by the National Science Foundation, and the creation of another doctoral program, this one in medical informatics.

And right there alongside all this, the nation watched as our men's basketball team made its run to the Sweet 16. I know many of you outside southeastern Wisconsin didn't have the chance to see our team until the NCAA tournament, but were extremely impressed with what you saw when the opportunity arose.

Here are a few more excellent improvements at UWM over the past year:

- We had a record-setting year for fund-raising. The campus raised more than \$20 million during this last fiscal year, and a good part of it was directed to support student scholarships.
- Enrollment for 2004-05 exceeded preceding years, and although the final numbers aren't quite in, we know 2005-06 will smash those records. At the beginning of this semester, I helped welcome a freshman class 14 percent larger than last year's.

Beyond just getting students on campus, however, through the new Access to Success program we will continue to focus on increasing student success, and retention and graduation rates. Although we lead UW campuses in the number of students of color, we must do even more to diversify our student body. Our new freshman class is more diverse than the student body at large, and we need to continue to move vigorously in this direction.

The Panther Sports and Health Complex construction and parking development (next to the Klotsche Center) should be completed later this fall. The Kenilworth Building renovation project is progressing on pace for an opening a year from now. This massive 500,000-square-foot project will be an important addition to the community. Many other campus building and remodeling projects continue forward, including work in Mitchell Hall, the Music Building and Lapham Hall.

Exceptional faculty and staff have joined us this academic year. Of the 33 new faculty, 17 are female and 11 are identified as ethnic minorities. This is a remarkable accomplishment for our academic departments, schools and colleges in light of the difficulties caused by state budget reductions and the hiring pause last year.

At the senior administrative level, we now have a new provost and vice chancellor for academic affairs in Dr. Rita Cheng, a new vice chancellor for research and dean of the Graduate School in Dr. Abbas Ourmazd, a new dean of the School of Information Studies in Dr. Johannes Britz and a new vice chancellor for administrative affairs in Dr. Sherwood Wilson. In addition, we have added two superb directors: Ms. Andrea Simpson to Alumni Relations and Dr. Julia Zimmer Bonner to the Norris Health Center. We are fortunate to have these talented individuals join us in these permanent positions.

With these basic building blocks in place, we can move forward toward our aspirational goals. Now, the hard work begins.

In the last year, I stated that we have two very clear goals: augmenting student access and success, and increasing our research to enhance our academic profile. We must continue to focus on those goals despite the many distractions that continue to present themselves.

Maintaining focus will be important because it sets the stage for what we want to do next: align our structures, policies and practices in support of our basic goals. We are going to have to make difficult decisions, and we will need to appropriately set the incentive structures so we can accomplish our goals. Along the way, changes will invariably have to be made if the institution is to reach its promise, and we all know how difficult change can be.

My message to start this academic year is straightforward: We had a good year, our momentum will continue, and now we must begin aligning our practices with our goals. This is going to be a challenge, but – based on last year – I know we are more than capable of answering the challenge.



— Carlos E. Santiago  
Chancellor

# COMING UP

## 2005 DISTINGUISHED LECTURE SERIES

**S**ince 1990, the UWM Union Distinguished Lecture Series has brought the famous – and sometimes infamous – to campus. This year's fall lineup includes Naomi Wolf, author of "The Beauty Myth," and Pulitzer Prize-winning illustrator Art Spiegelman.

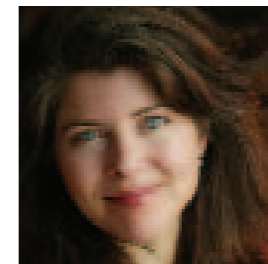
### NAOMI WOLF

**"The Beauty Myth Revisited: How Images of Beauty Are Still Used Against Women"**

Wednesday, Oct. 19, 8 p.m.

Union Wisconsin Room

Author/feminist/social critic Naomi Wolf examines the cultural backlash against feminism that uses images of female beauty to keep women "in their place." Wolf's first book, "The Beauty Myth," was an international bestseller. Her latest work, "Misconceptions," is a powerful critique of pregnancy and birth in America.



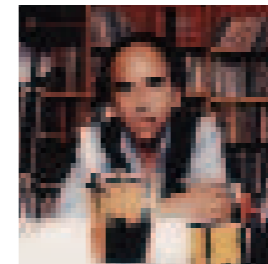
### ART SPIEGELMAN

**"Comix 101"**

Wednesday, Nov. 30, 8 p.m.

Union Wisconsin Room

Art Spiegelman has almost single-handedly turned comic books into works of literature. In 1992, he won the Pulitzer Prize for his masterful Holocaust narrative, "Maus." He will discuss the evolution of comics, explaining the value of this medium and how, in our post-literate culture, "comics echo the way the brain works."



## TICKETS

For ticket information, call the UWM Bookstore at 414-229-4201 or 1-800-662-5668. Tickets can now be purchased online at [www.bookstore.uwm.edu](http://www.bookstore.uwm.edu). Advance tickets are \$8 UWM students; \$10 faculty, staff and alumni; \$12 general public. At the door, tickets will be \$10 UWM students, \$12 faculty, staff and alumni; \$14 general public. For more information, contact UWM Union Programming at 414-229-3111.

## THE SCIENCE BAG

It's the 33rd season of the Science Bag, the unique series of live science shows presented by UWM faculty and staff. The free programs, designed for the curious ages 8 and up, are held every Friday at 8 p.m., and one Sunday each month at 2 p.m., in room 137 of the Physics Building, on the corner of E. Kenwood Blvd. and N. Cramer St. The 2005-06 rundown includes:

### November 2005

"Why Is Prediction So Difficult?"

Paul Roebber,

Atmospheric Sciences

Nov. 4, 11, 18, 25 at 8 p.m.

Nov. 13 at 2 p.m.

### January 2006

"Out-of-This-World Chemistry: Measuring Titan's Hazy Sky"

Joe Aldstadt, Chemistry

Jan. 6, 13, 20, 27 at 8 p.m.

Jan. 15 at 2 p.m.

### February 2006

"Resistance Is Futile: Perpetual Motion and the Secrets of Superconductivity"

Daniel Agterberg, Physics

Feb. 3, 10, 17, 24 at 8 p.m.

Feb. 12 at 2 p.m.

### March 2006

"Ingenious Insects: Lessons We Can Learn From Them"

Rebecca Klaper, Great Lakes WATER Institute

March 3, 10, 17, 24, 31 at 8 p.m.

March 12 at 2 p.m.

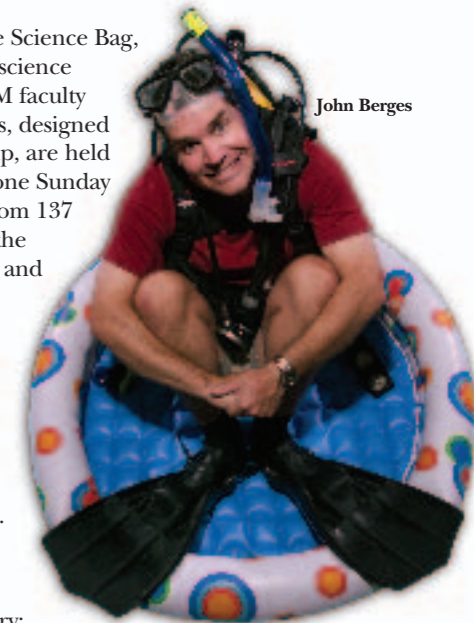
### April 2006

"Lakes vs. Oceans: Just a Matter of Size?"

John Berges, Biological Sciences

April 7, 14, 21, 28 at 8 p.m.

April 23 at 2 p.m.



John Berges

The Science Bag is supported by the College of Letters and Science & the Halbert and Alice Kadish Fund in the UWM Foundation.

Photo: Alan Magayne-Roshak ('72)

## YOU'RE A MEMBER!

As we announced in the last issue of UWM Today, the UWM Alumni Association has gone "dues-free"! All UWM alumni – more than 115,000 of you – are now permanent, lifetime members of the Alumni Association.

Watch for your membership card later this year. Use your card to take advantage of a wide array of Alumni Association benefits, including discounts on Panther basketball tickets, Peck School of the Arts performances, UWM Union activities and more. You'll also be eligible for the new US Bank/UWMAA Visa card that supports student scholarships and alumni programs with every purchase. For more information on the Visa card and other membership benefits, visit [www.alumni.uwm.edu](http://www.alumni.uwm.edu).

Two special benefits – discounts at the Klotsche Center and borrowing privileges at the UWM Libraries – will continue to be available to original life members. For more information, call the Alumni Association at 414-906-4640 or toll-free at 1-877-564-6896.

# NEWS&NOTES

## A BELIEF IN EDUCATION

Mead Witter Foundation grants \$350,000 to endow scholarship fund

By Kathy Quirk

**M**ohammed Rahemtulla's family came to Wisconsin from India and Pakistan, via Uganda and California.

Pa Vang's family came to Wisconsin from Vietnam via Laos.

The Mead and Witter families are longtime residents of Wisconsin, founders and former owners of Consolidated Papers Inc., a major corporation in north-central Wisconsin.

All of these families are linked by their belief in the importance of education.

The Mead Witter Foundation has granted UWM \$350,000 to endow the Mead Witter Foundation Scholarship Fund. The fund's goal is to encourage high academic achievement and a more diverse student body.

The full or partial tuition academic and need-based scholarships, for U.S. citizens who are Wisconsin residents, will support two or more undergraduates each year, and are renewable for four years. The endowment assures the scholarship will be funded in perpetuity.

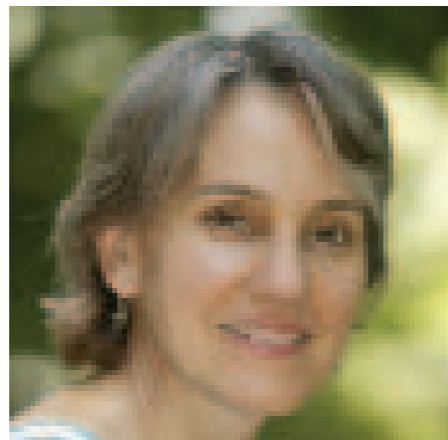
Vang, a sophomore accounting major, and Rahemtulla, a sophomore in the pre-med program, are the first recipients.

### VALUING DIVERSITY

Helen Ambuel, a member of the Mead family living in the Milwaukee area, was the catalyst for the Wisconsin Rapids-based foundation's gift. In the spring of 2004, the Mead Witter Foundation asked foundation board members for recommendations for grants, says Foundation President Susan Feith.

Helen and Bruce Ambuel had been supporting the UWM Foundation's Minority Academic Achievement Scholarship program, and Helen suggested to the Mead Witter Foundation that it become involved in providing scholarships for UWM students.

"I did some teaching at UWM a number of years ago as a TA [teaching assistant] in biology," says Ambuel. "I liked the student body in general." She particularly liked UWM's diversity, she says - "... older students, minority students, people working full-time and going to school, and they were all together in the same classroom."



Helen Ambuel, a member of the Mead family living in the Milwaukee area, was the catalyst for the Mead Witter Foundation's gift to UWM.

Ambuel's grandmother, Emily Mead Baldwin Bell, who served as a director of the foundation from 1962 to 1989, was always interested in supporting education and other Wisconsin-based projects, says Ambuel.

"A great deal of what we do is education oriented," says George W. Mead II, chairman of the Mead Witter Foundation, so Ambuel's suggestion for a scholarship fund for UWM students was a good fit for the foundation.

"Most of the grants have gone into the student component...rather than into buildings," says Mead.

### ENCOURAGING OTHERS TO GIVE

The Mead Witter Foundation, established in 1951, is a longtime provider of scholarships, primarily through the National Merit Scholarship Corporation and directly through various Wisconsin colleges.

"One target area for scholarships has been Northern Wisconsin, because the paper company [which was sold to Stora Enso in 2000] drew wood from the whole northern half of the state for the better

part of 100 years," says Feith. Without such scholarships, many students in the northern half of Wisconsin "might not get the opportunity to go to college."

"Another focus has been support to schools such as MSOE, and now UWM. Helen's suggestion is an excellent choice for us," Mead says. In addition, the foundation is a longtime supporter of the United Negro College Fund, and is working to further encourage more diversity in higher education.

"We hope our gift will encourage others to contribute to scholarships," adds Mead.

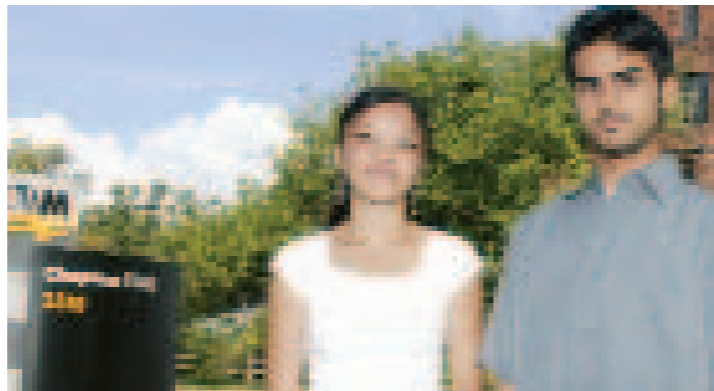
### AN INVESTMENT IN THE FUTURE

Vang, born to a Hmong family in Laos, moved to Milwaukee at age 2. Other than one aunt, she is the first in her family to attend college. "I want to be an example for my younger brothers and sister," she says, "and be able to support my family."

Rahemtulla's Indian grandfather came to the U.S. as a refugee from Uganda in the 1970s, driven out of the country by dictator Idi Amin. His father attended college for two years, but had to drop out when Mohammed's grandfather became ill.

Rahemtulla plans to become a doctor. "It is a prestigious profession and I want to be able to help people. I want to show them [the scholarship donors] that their money will not be wasted."

"UWM is extremely grateful to the Mead Witter Foundation and family for their generous support for outstanding UWM students," says Chancellor Carlos Santiago. "This is truly an investment in future generations of students, and will benefit Wisconsin for many years to come."



Pa Vang and Mohammed Rahemtulla are the first recipients of the Mead Witter Foundation scholarships.

## UWM CLAIMS SECOND-STRAIGHT MCCAFFERTY TROPHY

**F**or the second straight year and for the third time in the last five years, UWM has won the McCafferty Trophy, given to the Horizon League's all-sports champion.

UWM also won the league's Men's All-Sports Trophy for the first time.

The Panthers claimed the crowns, in part, by collecting eight Horizon League championships this past season, including regular-season and tournament titles in both men's basketball and men's soccer. The women's soccer and women's volleyball teams each won regular-season titles, and the men's track and field team won both the indoor and outdoor crowns.

"This award is a wonderful reflection of the hard work our coaches, student-athletes and staff are putting in on a daily basis," Athletics Director Bud Haidet said. "The success we have enjoyed has resulted

in heightened expectations, and everyone is to be credited for rising up to meet and exceed those expectations.

"We are fortunate to have assembled a tremendous staff and to have an institution that can attract high-quality student-athletes," Haidet added. "Plus, we are able to continue our success thanks to the tremendous support we enjoy from our administration, the campus and the community."

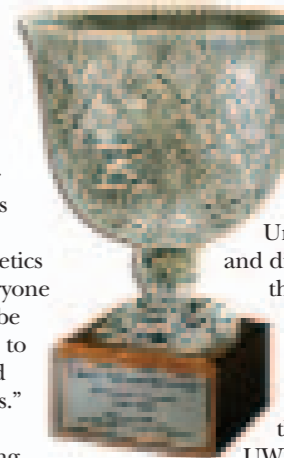
"The success of our athletics program is something everyone associated with UWM can be proud of. We look forward to continuing our growth and success in the coming years."

UWM also won the McCafferty Trophy following the 2000-01 school year and last school

year, finishing second the two years in between. UWM and Butler are the only current league institutions to win the award more than once.

The McCafferty Trophy is awarded annually by the Horizon League to the member institution compiling the greatest number of performance points in league championships. The trophy is presented in honor of James J. McCafferty, the former Xavier University men's basketball coach and director of athletics, who served as the league's first commissioner in 1979-80.

Schools earn performance points based on their finish in all 18 championship sports offered by the Horizon League. This year, UWM compiled 49 points, including 28 on the men's side.



## JALLOW EARNS TOP HORIZON LEAGUE HONOR

**U**WM soccer standout Antou Jallow has been named the male recipient of the 2005 Horizon League Cecil M. Coleman Medal of Honor.

The Coleman Award is presented annually to the league's top male and female student-athletes who best exemplify the dignity and high purpose of the league and its membership. The individuals demonstrate outstanding achievement in academics, athletics and extracurricular activities.

Jallow topped off his collegiate career as the Panthers' and the Horizon League's all-time leading goal scorer, notching 60 goals to go with 133 career points. He was named the 2002 and 2004 Horizon League Player of the Year and earned All-Horizon League First Team honors three times. He was named National Soccer Coaches Association Third Team All-American and First Team All-Region in 2002, and again received all-region recognition in 2004.

Jallow also excelled in the classroom. He is a three-time Academic All-Horizon League honoree and a four-time UWM Scholar-Athlete with Distinction.

In his free time, Jallow took part in elementary and middle school speaking engagements and reading programs. He has participated in neighborhood clean-up

activities, and has volunteered with Toys for Tots and clothing drives. Jallow also has contributed his time to the renovation of buildings for a local youth soccer program and with youth soccer clinics.

"This is the perfect way to cap off a wonderful career for Antou in Milwaukee," Athletics Director Bud Haidet said. "Antou has performed at a remarkable level both on the field and in the classroom, and all along has been a tremendous representative of both the university and the Horizon League. We are all very proud of Antou and could not be happier to see him win this award."

Jallow, who graduated in May, has signed a professional contract in the Swedish Premier League, and was drafted by the San Jose Earthquakes of Major League Soccer.

He is the fifth UWM student-athlete since 1998 to win the highest honor handed out by the Horizon League - the most by any league school.



## JOIN THE FRIENDS, SUPPORT THE LIBRARY, AND ENRICH YOUR LIFE

The Friends of the Golda Meir Library, an organization dedicated to the support and promotion of the UWM Libraries, want to welcome all alumni with an invitation to join the Friends and get involved with some of the rewarding events the Friends sponsor.

A basic membership in the Friends for only \$35 yields rich returns: a Special Permit card to borrow from the UWM Libraries' collection of over two million books, invitations to Friends and Library-sponsored programs, and the UWM Libraries Newsletter, with information on library resources and activities.

Join at a higher level and receive even more benefits!

Events sponsored by the Friends include an annual presentation. This year, Mayor Tom Barrett and Robert Greenstreet, dean of UWM's School of Architecture and Urban Planning and Milwaukee's city planner, spoke about their visions for Milwaukee's future, and drew a standing-room-only crowd.

The Friends also sponsor popular semi-annual used book sales (next sale, Oct. 17-19) and

educational tours, including a cruise through Alaska's magnificent inland waterways in July 2006. Plans are also in the works for a 2007 trip to Slovenia. The maps, rare photographs and other resources of the UWM Libraries' American Geographical Society Library enhance all educational trips sponsored by the Friends.

For more information on joining the Friends of the Golda Meir Library, please call 414-229-6202, email libadmin@uwm.edu, or visit the Friends' website at [www.uwm.edu/Libraries/Friends/](http://www.uwm.edu/Libraries/Friends/).



Alaska's inland waterways (detail from 1867 U.S. Coast Survey Office map "North West America" in the American Geographical Society Library).

## FALL EVENTS AT THE UWM LIBRARIES

### Monday-Wednesday, Oct. 17-19

Friends of the Golda Meir Library Fall Used Book Sale. Oct. 17, 3-6 p.m., open to UWM students only, with valid ID. Oct. 18 and 19, 10 a.m.-6 p.m., open to the public. Held in Conference Center, fourth floor.

### Friday, Oct. 21, 2 p.m.

The Scholar and the Library. "The War Against Grammar in American Education," David Mulroy, UWM Department of Foreign Languages and Linguistics. Held in E281, second floor, east wing.

### Thursday, Nov. 3, 4:30 p.m.

Fromkin Lecture. "Starving for Revolution: The Milwaukee Black Panthers' Struggle to Feed the Hungry," Nik Heynen, UWM Department of Geography. Held in Conference Center, fourth floor.

### Friday, Nov. 4, 3 p.m.

UWM's Academic Adventurers. Johannes Britz, Dean, School of Information Studies, "Africa as a Knowledge Society: The Road Ahead." Held in the American Geographical Society Library, third floor, east wing.

## THE UWM ANNUAL FUND First-time donors were inspired by their UWM experiences

UWM alumni Tammy ('03 MS Education) and Dan Riedel ('97 BS Education) made a big impact at the university this year: They made their first gift to UWM. Through their financial support of the Annual Fund, the Riedels are helping to provide for the success of UWM and its students.

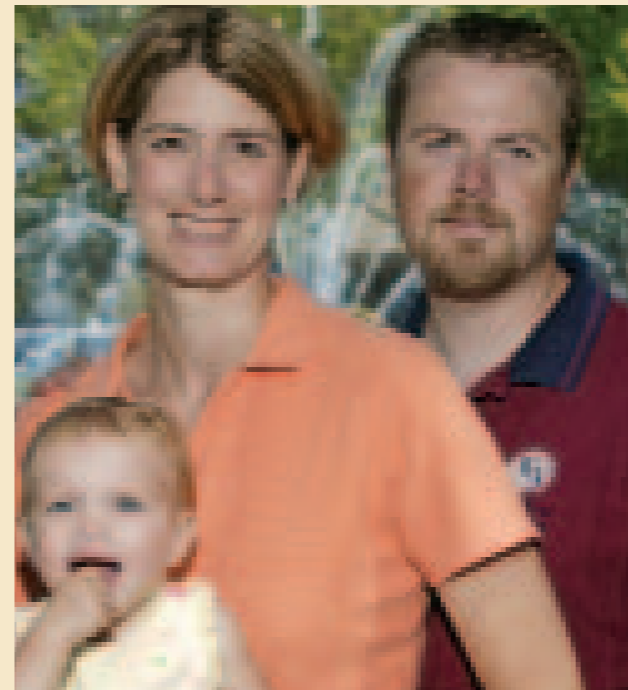
"Our experiences at UWM inspired us. Now, we want to ensure a similar and meaningful experience for future students," said Tammy.

Dan and Tammy returned to campus recently with their daughter, Sophia. Both are graduates of the School of Education and have fond memories of their time at UWM. Tammy teaches math and Spanish at Fox River Middle School in Waterford, and Dan puts his training as a teacher to good use conducting insurance seminars for Woller-Anger and Company in Elm Grove.

The Riedels made their Annual Fund contribution to the School of Education when they responded to an appeal in the mail. Both point to their experience at UWM as a springboard to a satisfying career. "Whether we are in the classroom, in the office, or home with our daughter, the School of Education prepared us well for our careers and a full life."

Every year, thousands of alumni participate in the UWM Annual Fund by making a financial contribution. Many alumni respond enthusiastically to calls from UWM students, and others reply to a letter in the mail or make a gift through the website ([www.development.uwm.edu](http://www.development.uwm.edu)).

Increasingly, what we do at the university is made possible through the private support of alumni and friends. Contributions to the Annual Fund directly benefit students, faculty and educational programs at UWM. For example, alumni support allows the university to meet pressing needs, which may include



PETE AMLAND

Tammy and Dan Riedel with their daughter, Sophia.

providing scholarships for deserving students, increasing internship opportunities so students have both knowledge and experience when they enter the work force, hiring and retaining outstanding faculty, strengthening academic programs and improving technology in classrooms and laboratories.

We salute the Riedels, and all of our UWM alumni and friends who support the Annual Fund.

—Tom Bjornstad, Director of Annual Giving

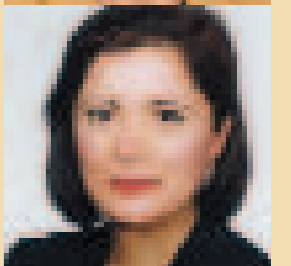
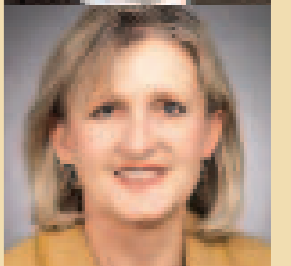
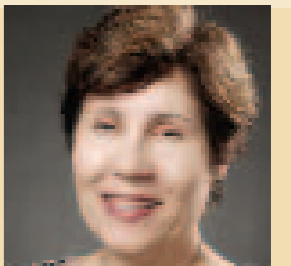
## UWM GIVES TO UWM

Through their work in instruction, research and program support, the dedicated employees at the university make invaluable contributions to the education of our students and the well-being of our community.

Every year, many of these same people make another important contribution to the university: they support UWM by making a financial gift to the Annual Fund through the faculty-staff campaign, known on campus as UWM Gives to UWM. Contributions for fiscal year 2005 totaled an impressive \$423,202, setting a new record for the campaign.

"We're thrilled!" noted Randall Lambrecht, dean of the College of Health Sciences, who chaired the campaign along with Ewa Barczyk (interim director of UWM Libraries), Mary Roggeman (vice chancellor for student affairs) and Mariam Zahedi (Wisconsin Distinguished Professor, School of Business Administration). "We want to express our appreciation to our campaign volunteers and to everyone who participated in UWM Gives to UWM this year by making a gift. Your generosity reflects your deep commitment to the university and sets an important example for others. Thank you!"

Faculty and staff contributions – including gifts from retirees – are a key to the Annual Fund's success each year, providing critically needed private support to the university. These resources fund scholarships for deserving students, help attract and retain talented faculty, and enhance resources in classrooms, libraries and laboratories.



UWM Gives to UWM co-chairs (from top) Ewa Barczyk, Randall Lambrecht, Mary Roggeman and Mariam Zahedi

## MAKING A GIFT IS EASY

- First, consider the level of your support.
- The average gift to the Annual Fund is \$70. Many first-time donors make a gift of \$50.
- Then, determine what you would like to support.
- Gifts can be designated to a school or college, the UWM Libraries, Athletics or scholarships. Or gifts can be unrestricted.

## MAKE YOUR GIFT

- Online at [www.development.uwm.edu](http://www.development.uwm.edu)
- Call 414-229-3298 and talk to Tom Bjornstad, director of Annual Giving

- Send your gift in the mail: UWM Annual Fund, 3230 E. Kenwood Blvd., Milwaukee, WI 53211

## MATCHING GIFTS

- Do you or your spouse work for a company with a matching gift program?
- Many companies will match their employees' contributions to institutions of higher education. Please check with your employer's human resource department to see how you can increase the value of your gift.

# Radio for the future

Technical innovations provide many opportunities for WUWM

By Brad Stratton

Photography by Alan Magayne-Roshak '72

Radio has been given up for dead more times than can be counted over the past several decades. Movie theaters, television, VCRs, cable television, movie multiplexes and the Internet, among others, were all supposed to do in poor old low-tech radio. Today, technological innovations again are lining up in opposition to traditional radio, and, once again, headlines are screaming about the end of radio as we know it.

Dave Edwards doesn't believe a word of it.

Edwards is the Milwaukee radio veteran who has spent the past two decades as director/general manager of WUWM (FM 89.7), the public radio station licensed to the University of Wisconsin Board of Regents and operated by the University of Wisconsin-Milwaukee. WUWM is a charter member station of National Public Radio (NPR) – it began broadcasting three years prior to NPR's establishment by the Public Broadcasting Act of 1967.

Edwards grants that traditional radio technology and programming is undergoing very significant changes. WUWM, however, has positioned itself to, in some cases, take advantage of those innovations and, in other cases, attack the technological innovations where they are the weakest.

Right now, three technological developments are influencing perceptions of radio. The first, satellite radio, is grabbing the most headlines. The second, podcasting, is more specialized than satellite but holds a curious appeal similar to that of blogs on the Internet. The third, digital radio, holds perhaps the most common appeal, and for the foreseeable future is the technology that public radio stations will embrace most strongly.

*Christina Shockley, "All Things Considered" host/news producer, spreads out her work in the main studio at WUWM's offices in the lower level of the Plankinton Building – the same downtown structure that houses UWM's School of Continuing Education. In 2000, the station made the move downtown from its cramped, out-of-date facilities in Mitchell Hall and the basement of the Music Building on campus. The move cost about \$750,000 and was funded entirely by WUWM listeners.*

## BEAMING DOWN FROM A SATELLITE NEAR YOU

Few things attract as much attention as a \$500 million contract; even professional athletes aren't overpaid that much money. Yet \$500 million was the amount tendered by Sirius Satellite Radio to First Amendment-bending broadcaster Howard Stern in October 2004. Suddenly, satellite radio was more than a curiosity.

Since the Stern announcement, Sirius has built its audience to more than 1.8 million listeners willing to pay \$12.95 a month for access to 120 radio channels. Sirius is up against another satellite provider called XM, which has more than 4 million subscribers paying the same monthly fee for 150 different audio channels. For either service, subscribers must acquire a special radio that either plugs into or replaces current radios in vehicles, homes or places in between.

Satellite radios range in price from less than \$100 to more than \$2,000. For the investment, however, listeners receive crystal-clear transmissions of music, sports and talk programming not governed by the Federal Communications Commission.

WUWM's Edwards said public broadcasting's response to satellite is making some programming available via the satellite services. You won't find the daily public radio news programs such as "Morning Edition" or "All Things Considered" on the satellites – local NPR stations wouldn't tolerate alternative access to their most popular daily programs, Edwards said – but there is a selection of shows familiar to Milwaukee public radio listeners, including "Car Talk" and "A Prairie Home Companion" on Sirius, and "This American Life" and "Whad'Ya Know?" on XM.



"At 10" Producer Dan Harmon and News Producer Christina Shockley edit an upcoming segment for WUWM. Nearly all material broadcast on the station is digital and resides inside computers. Station Director/General Manager Dave Edwards said WUWM still has the large, familiar reel-to-reel tape recorders in studios, "but they're mostly for show."

## PODCASTING MAKES BROADCASTING VERY PERSONAL

First there were weblogs, or blogs, that allowed anyone with access to a computer with an Internet link to maintain a daily diary of personal musings. There are millions of blogs

today, and thousands more are being added to the Internet every day.

Podcasts aren't quite as ubiquitous, but their numbers also grow daily. Compared to creating and disseminating a blog, the only additional hardware one needs to create and distribute a podcast is a microphone. That's because a podcast is, essentially, a personal radio program that is created and distributed via the Internet. (More information about the technology and how to create individual programming can be found on the web at locations such as ourmedia.org and ipodder.org.)

Some people listen to podcasts on their computers, but more often they are downloaded to portable music players (such as Apple's popular iPod) and listened to by people on the go. Just like the individual songs downloaded to portable music players, podcasts can be started and stopped at the listener's discretion.

Programming varies in content from straight talk shows (a person sitting in a room talking about whatever) to very slick music programs indistinguishable from traditional radio shows.

Considering that all software necessary to create and listen to podcasts is free, the quality of the programming is often equivalent to the cost.

National Public Radio has responded by making nationally available as podcasts such programs as "On the Media" (naturally) and "Living on Earth." Some local public radio stations have made their local programs available via podcasts, and WUWM plans to join that group. "We are working on the technology now and expect to make an announcement soon," Edwards said.

## THE COMING DIGITIZATION OF RADIO

The most intriguing development under way for radio in general and public radio stations in particular is digital radio (also called "high-definition radio" and "HD Radio," the latter being trademarked). Like digital television sets, digital radios allow a broadcasting station to transmit more information to receivers – and there are several potential ways to horizontally slice the signal. The options include the ability for stations to send out:

- More than one program at a time over the same bandwidth;
- Words and images related to the current programming (name of the song and artist, lyrics, pictures of the performer) that can be viewed on a radio display panel;
- Words and images not related to the current programming (traffic and weather reports);
- Advertisements.

Like satellite radio, digital radio's clarity will be significantly improved over today's traditional analog radio signal, which is influenced by surrounding landscape, buildings and weather. "Digital AM will sound like today's FM, and digital FM will sound like CDs," Edwards said.

As with satellite radio, a special radio is required to receive the digital signal. Because only a limited number of radio stations currently broadcast in digital, just a handful of digital radios are available to consumers – and all are pricey.

In-car units cost at least a few hundred dollars, and automakers have been slow to make them available as optional equipment (although a few car companies have hinted they'll make them available in 2006 models). Small home units are in the \$250 range, while receivers that can be incorporated into home audio arrangements cost \$1,000 or more.

Radio stations are expected to continue broadcasting their original analog signal for many years to come. People who do not acquire a digital radio will still be able to listen to the primary signal from existing radio stations.

WUWM has been planning for the transition to digital radio over the past few years, and actively started the work this year. The station received a \$75,000 grant from the Corporation for Public Broadcasting and is gathering funds locally to match the grant. The funds will be used to pay for the equipment and finance the labor necessary for the change. Edwards said he expects the work to be completed and the station to begin offering a digital transmission by early 2006.

This summer, NPR began making available to its member stations five programmed music formats suitable

for digital broadcast. They are classical, electronica, folk, jazz and triple-A (adult album alternative – a format that plays a wide variety of music and has similarities to WUWM's current "World Café" and "Café Tonight" programs). Which additional content will be offered on WUWM has yet to be determined, Edwards said.

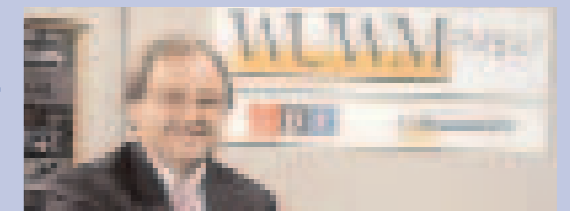
## RESPONDING TO TECHNOLOGICAL INNOVATIONS

With satellite broadcasts, podcasting and digital radio all representing serious challenges to the NPR audience, Edwards said WUWM, in consultation with its Community Advisory Board, has developed two primary responses in addition to those already mentioned. Those responses are increasing local programming and partnering with key community constituents.

## THE INCREASING IMPORTANCE OF LOCAL FUND-RAISING

Fund-raising at WUWM has changed drastically since Dave Edwards started in the station's news department in 1978. Back then, almost all operational funds came from the federal government or UW-Milwaukee.

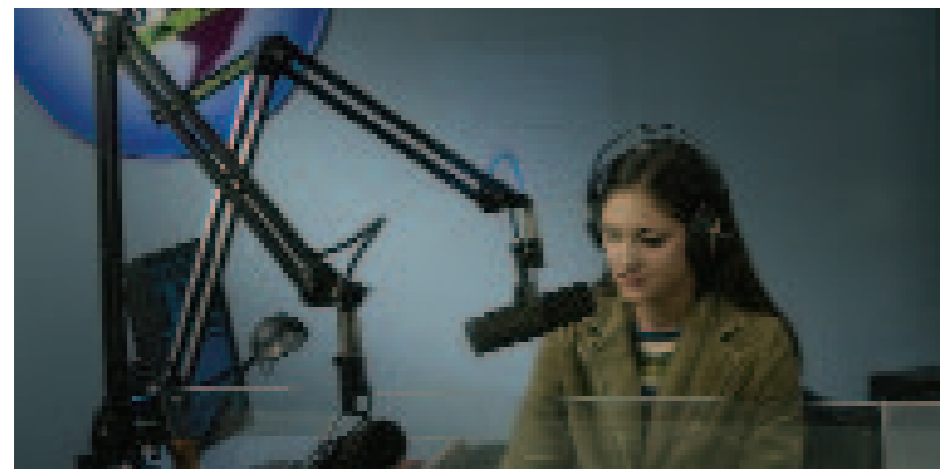
As allocations shrank and fund-raising became a necessity, the size of campaigns grew. "We used to raise \$15,000 in a week and go out to celebrate," he said. Today, the station's annual budget is \$3 million, with three-quarters of that total raised in the community.



WUWM Director/General Manager Dave Edwards

TODAY, THE STATION'S ANNUAL BUDGET IS \$3 MILLION, WITH THREE-QUARTERS OF THAT TOTAL RAISED IN THE COMMUNITY.

"Some government support is important," said Edwards, "but the shift in funds forces us to pay attention to what the community wants."



Another way WUWM connects with the community is through the locally produced musical show "Café Tonight." Amanda Shalhoub is one of the hosts of the program, which each weeknight features contemporary artists generally ignored by other radio stations.

## WUWM ON THE WEB

A strong website is a vital part of radio broadcasting today, said Dave Edwards, director/general manager of WUWM. "Our listeners embraced the web a long time ago," he said. "It has become a really big deal." The WUWM site at [www.wuwm.com](http://www.wuwm.com) reinforces his words.

It has what has become an industry standard - an audio link to the current live program - as well as audio links to the day's locally produced news features, the recent archive of the station's "At 10" hour-long programs and the vast websites maintained by the three primary producers of syndicated public radio programs: American Public Media, National Public Radio and Public Radio International.

There also are links that allow secure, online financial contributions to the station, detailed program listings and an events calendar to upcoming concerts supported by the station.

Edwards recalled his early days in Milwaukee radio as part of a news staff at an AM rock-'n'-roll station. Every station in those days had a local focus. Even though his station spent most of its time playing the Beatles and Rolling Stones, it also was creating hourly local newscasts 24 hours a day.

Such local focus is missing from most Milwaukee-area programming today, he said, and it's a void WUWM is filling. Not only do the morning and evening "Morning Edition" and "All Things Considered" programs feature frequent local story breaks - some as long as 10 minutes - but the weekday programming also is anchored by the hour-long "At 10" broadcast at 10 a.m. and 10 p.m.

"At 10" gives the station the opportunity to examine in detail local issues of all levels of complexity. Program guests are engaged in lengthy conversations kept lively by the program's four on-air producers. "At 10" required two producers in the beginning," Edwards said. "We're at four now, and we'll soon be adding a fifth."

The breadth of the program's consistent community coverage was evident when the program added Sea Stachura to focus on the local arts scene - a subject area receiving minimal radio attention elsewhere.

The intelligent conversations at the heart of "At 10" are a rarity among radio programs in Milwaukee. Most local talk shows instead opt for hosts who speak from a specific perspective, ridicule contrarian viewpoints and tell listeners how to think.

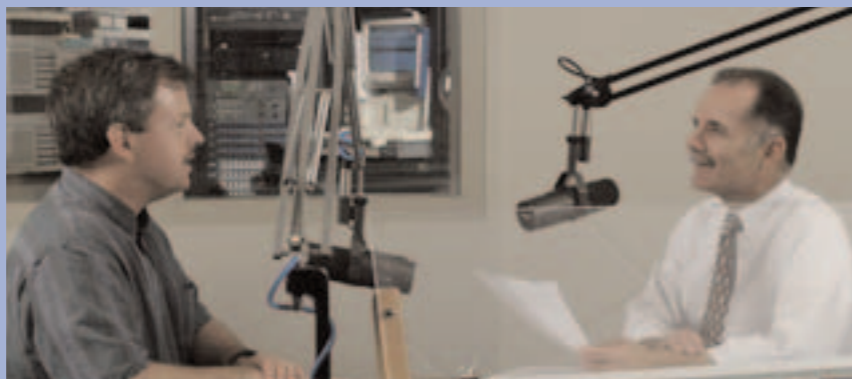
WUWM also is partnering with a wide variety of local organizations to provide broader coverage of the area and more exposure for the radio station. Editors and reporters from Milwaukee Magazine, the Milwaukee Journal Sentinel, the Business Journal of Milwaukee and Shepherd Express are frequent program guests. Edwards said they often provide

"the inside story that may not have made it into their original story."

A partnership with the Johnson Foundation in Racine has given WUWM access to audiotapes and records of the conferences hosted by the foundation over the years at the highly regarded Wingspread Conference Center. And partnerships with The Public Policy Forum, Harry W. Schwartz Bookshops and the Pabst Theater have given WUWM the opportunity to further support speakers, authors and musicians

who likely have been heard on other WUWM programs. Pabst Theater musical performers, for example, frequently are featured on the syndicated "World Café" and WUWM-produced "Café Tonight."

Edwards believes this coordinated, expansive approach will secure the future success of Milwaukee's public radio station. "Our ties to listeners in Southeastern Wisconsin are our future," he said. "We'll always have NPR, but that will be available elsewhere. We know we have to give more."



Tom Luljak (right), host of "UWM Today," talks with Keith Bender, assistant professor of economics at UWM, about Bender's research on well-being in retirement.

## UWM on WUWM

As might be expected on a radio station licensed to the University of Wisconsin Board of Regents and operated by the University of Wisconsin-Milwaukee, UWM is frequently featured on WUWM. Professors are often called upon to offer expert commentary when the news of the day coincides with their career research.

Longer conversations often are heard on WUWM's "UWM Today" program, which airs at 1:30 p.m. Thursdays and repeats at 7:30 p.m. Sundays. The 30-minute program is hosted by Tom Luljak, vice chancellor for university relations and communications. On the first Thursday and following Sunday of each month, the time slot is occupied by "The Chancellor's Report," a conversation between UWM Chancellor Carlos E. Santiago and WUWM Director/General Manager Dave Edwards.

# A MILESTONE FOR UWM

## The Marcus Prize enhances the university's role in world architecture

By Kathy Quirk

Stephen Marcus, chairman and chief executive officer of the Marcus Corporation, has been interested in architecture since he was a boy, and once even thought he'd grow up to design buildings - "I'm a closet architect," he says with a smile. At the same time, the Marcus family has had a longstanding relationship with UWM, collaborating on projects to benefit the community, says Greg Marcus, senior vice president of corporate development for the Marcus Corporation and a director of the Marcus Corporation Foundation.

That interest in architecture and commitment to the Milwaukee community were the key factors behind the Marcus Corporation Foundation's decision to establish a \$100,000 international prize to honor emerging architects, say Steve and Greg Marcus. The UWM School of Architecture and Urban Planning (SARUP) is administering the prize, which has been compared in stature to architecture's Pritzker Prize. That prize, however, tends to honor long-established architects.

The Dutch firm MVRDV is the winner of the first Marcus Prize for emerging architects. The buildings on these pages are examples of its work.

**HELPING YOUNG ARCHITECTS AND THE COMMUNITY**

“We wanted to do something that would help young architects and at the same time would help the community,” says Steve.

Marcus says he’s been impressed by how nearby Chicago “has become a fabulous city architecturally.” And, a trip to Prague nine years ago further opened his eyes to how architecture can help shape a city’s character – and even help preserve it. Prague was spared some devastation during wars and conflicts, says Steve, simply because it was such a beautiful city.

Good architecture, adds Greg, “gives a city psychological benefits beyond the structure itself.” For example, he notes, every time Milwaukeeans open a national magazine to see an ad for a high-end product with the Calatrava addition to the Art Museum in the background, they feel good about the city.

The decision to work with UWM in establishing the prize was easy, Greg says. “Our relationship with UWM goes back a long way.”

The prize, which will be presented every two years, is \$50,000 to the architecture firm, and \$50,000 to the School of Architecture and Urban Planning for administering the competition and prize.

The Marcus Corporation Foundation is the philanthropic arm of The Marcus Corporation, which owns and operates

movie theaters, resorts and hotels throughout the United States. The foundation has said it intends to award three Marcus Prizes over six years.

The Marcus Prize, says Robert Greenstreet, dean of SARUP, is a milestone for UWM, enhancing its role in world architecture. “We are helping predict who the world’s next great architects will be.” That’s an area usually occupied by national and international architecture academics and firms, he says. “It’s quite remarkable for UWM.” Greenstreet, who is also Milwaukee city planner, served on the prize jury along with Stephen Marcus and several internationally renowned architects and theorists.

**WINNERS TO WORK WITH UWM**

Twelve prominent members of the international architecture community nominated 22 outstanding candidates from 12 countries for the first prize. In May 2005, the prize jury chose MVRDV of the Netherlands as the winner. Members of MVRDV’s three-person architectural team will lead a design studio on the UWM campus in the spring semester, and will be involved in projects in Milwaukee.

MVRDV, which is made up of Winy Maas, 46; Jacob van Rijs, 41; and Nathalie de Vries, 40, is heavily influenced by Dutch-born architect Rem Koolhaas, with whom Maas and van Rijs studied,



*MVRDV architects (from left) Jacob van Rijs, Nathalie de Vries and Winy Maas*

according to an article in the Milwaukee Journal Sentinel. “Like Koolhaas, they embrace hard-edged industrial materials, including corrugated metal and raw concrete, and celebrate the jangle and chaos of urban life,” wrote the paper’s architecture critic, Whitney Gould.

**A LOT OF POTENTIAL**

MVRDV team members will travel to Milwaukee during the fall semester to receive the award and begin to craft the projects they’ll be working on with UWM students and faculty in the spring semester, says Greenstreet. Grace La, SARUP faculty member and partner in the La Dallman architecture firm, will be the UWM faculty lead on the project. SARUP also is planning a UWinteriM course that would give students the opportunity to travel to the Netherlands to work with the architects and see some of MVRDV’s work.

Among the European projects MVRDV has worked on is the Dutch Pavilion for the World Exhibition 2000 in Hanover, Germany, and the Silodam housing complex, a multi-colored cluster of buildings raised on stilts above Amsterdam’s IJ River.

MVRDV also designed the VPRO Broadcasting Company headquarters in the Dutch city of Hiversum, which features a vegetative roof, glass-curtain walls and exposed glass tubing. Maas told the Journal Sentinel that the glass tubing was inspired by Frank Lloyd Wright’s S.C. Johnson & Son Administration Building in Racine.

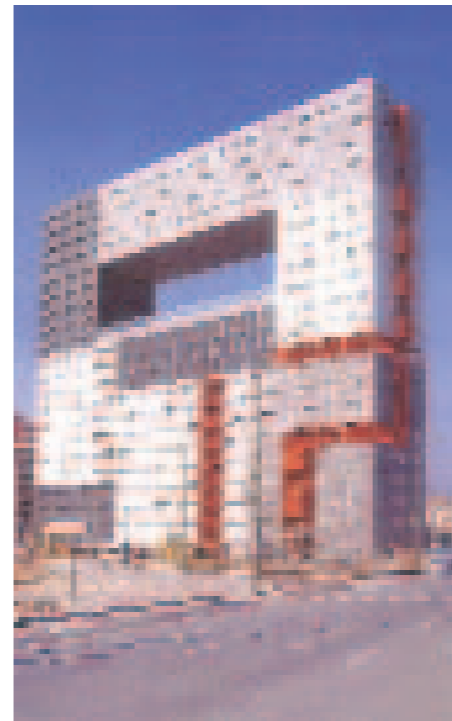
“The sites that MVRDV has dealt with in postindustrial cities with waterfronts are very similar to locations in Milwaukee,” Greenstreet told Architectural Record. “There will be a lot of potential for the firm to engage with the building community here in Milwaukee.”

PETE ANLAND



*An interest in architecture and commitment to the Milwaukee community led to the Marcus Corporation Foundation’s decision to establish a \$100,000 prize for emerging architects, say Steve (left) and Greg Marcus.*

ARCHITECTURAL PHOTOS COURTESY MVRDV



# New run/walk highlights **PANTHERFEST 2005**

## OCTOBER 10-16

The Panthers will be on the prowl during this year's Pantherfest Oct. 10-16.

In addition to all the usual athletic activities, classes, camps and fun events for students, alumni, faculty/staff and community, Pantherfest is adding a new event this year – a certified 5K run/walk.

The "Panther Prowl," on Sunday, Oct. 16, will raise money for UWM Alumni Association scholarships. The event is a revival of the UWMAA Scholarship Run that was popular in the 1980s. The "prowl" will start on the UWM campus at 10 a.m., rain or shine, and run/walk its way through nearby Lake Park and back.

Following the run/walk, participants and their families can celebrate with beverages, live music and prizes in the UWM Union Ballroom.

Runners and walkers of all ages are welcome, and may take part individually or as part of a team. Because money raised goes for scholarships, the runners/walkers are encouraged to sign up sponsors for pledges. To register, or for more information, see the brochure bound into this magazine, or go to [www.pantherprowl.net](http://www.pantherprowl.net).

Other highlights of this year's Pantherfest include a chance to meet new men's basketball coach Rob Jeter and women's coach Sandy Botham at the Panther FAN-tastic Friday (the event formerly known as Midnight



Mayhem) on Friday, Oct. 14. Both the men's and women's teams will be there to rally the crowd for another exciting season.

The Wisconsin State College, Milwaukee, Class of 1955 celebrates its 50th reunion with a reception on Friday and other special events throughout the weekend.

All alumni are invited to the Homecoming Luncheon on Saturday, Oct. 15, at noon in the UWM Union Ballroom.

Also on Saturday, adults and children will enjoy fun and learning with Alumni College, College for Kids and cheer/dance camps. You'll find details and a registration form for the classes and luncheon on the next pages.

As usual, there will be cookouts, a movie, dances and other fun activities throughout the week for students and alumni, as well as athletic events. For updated information on dates/times of events, go to: [www.uwm.edu/homecoming](http://www.uwm.edu/homecoming)



# Alumni College 2005 **SATURDAY, OCT. 15**

Whether you're a UWM alum, neighbor, current student, faculty or staff employee, or other friend of the university, you're invited to come to the UWM campus on Saturday, Oct. 15, for the seventh annual Alumni College. It's your opportunity to explore a topic or area of interest in one or two of the classes listed below. And best of all, the classes are free!

You'll start the day at 8:30 a.m. in the UWM Union Terrace, where you'll pick up a registration packet containing information on the course(s) you've selected. Then fan out across the campus for your classes in Session I (9–10:15 a.m.) and Session II (10:30–11:45 a.m.). All classes are available on a first-come, first-served basis.

Here is the starting lineup for this year's Alumni College. Be sure to check out the special sessions for kids, which are listed on the next page. Information on class locations will be provided in the registration packets.

## SESSION 1 9-10:15 A.M.

### A Can Fido make you feel better?

Learn how animal-assisted therapy is used with individuals of all ages, many with special needs. Instructor: David G. Tucker, president of Pets Helping People (PHP) and faculty member in the Helen Bader School of Social Welfare. Three handler/pet teams from PHP will be on hand. Class limit: 20.

### B Quick and easy webpage construction

Learn how to design and build basic webpages using tools already available on most computers. Instructor: Jim Kasum, MIS faculty member, School of Business Administration. Class limit: 35.

### C The Wellness Project

Learn about the activities and findings of a 16-week, community-based nutrition and exercise program for a low-income population. Instructor: Jean Bell-Calvin, College of Nursing. Class limit: 30.

### D Exercise, nutrition and health

Learn to distinguish facts from fads when looking for an effective diet and exercise program. Instructor: Ann Snyder, College of Health Sciences. Class limit: 90.

### E Climbing up your family tree

Learn the basics of family history research, including how to conduct effective interviews, locate distant relatives and use a variety of genealogical resources. Instructor: Kim Beck, School of Continuing Education. Class limit: 20.

### F Join a great discussion of a great work

Join David Mulroy, director of UWM's Great Books program, in a reading and in-depth

discussion of several of Emily Dickinson's short poems. No advance preparation needed. Class limit: 20.

### G Long-term care insurance: Facts, myths and frauds

A quick consumer guide to long-term care insurance, including care options, types of coverage, and scams to avoid. Instructors: Paul Haussman, School of Continuing Education, and Rick Sternkopf, Financial Network Investment Corporation. Class limit: 20.

### H Changing directions to change lives: How to become a teacher

This class is for anyone contemplating an education major, or considering returning to college to add an education degree. Instructor: Felipe Rodriguez Jr., School of Education. Class limit: 25.

### I What's your sign? An introduction to American Sign Language

Learn American Sign Language greetings and how to spell your name, as well as some basic and useful vocabulary. Instructor: Vaughn Hallada, School of Education. Class limit: 25.

### J Job search 2005

Get an update on the job market, find out which careers are most in demand, learn how to prepare an effective resume (paper and electronic) and market yourself to employers. Instructor: Kelly Casto, School of Business Administration. Class limit: 35.

### K Treasures from the Archives

Learn about the treasures available for research in the UWM Libraries' Archives. Instructor: Michael Doynen, head of the Archives Department. Class limit: 16.

## SESSION 2 10:30-11:45 A.M.

### L Changing directions to change lives: How to become a teacher

This class is for anyone contemplating an education major, or considering returning to college to add an education degree. Instructor: Felipe Rodriguez Jr., School of Education. Class limit: 25.

### M Complementary and alternative medicine: It's more than ginkgo and lavender oil

Learn about some commonly available complementary and alternative health care modalities and how they can be integrated into your life. Instructor: Susan Stalewski, College of Health Sciences. Class limit: 90.

### N Amazon, Wikipedia and Google, Oh My!

Learn how to get the most out of online research tools. Features customized, hands-on instruction. Instructor: John Hubbard, electronic resources librarian, UWM Libraries. Class limit: 30.

### O New approaches to alcohol problems

An overview of recent advances and new approaches to helping individuals overcome problems with alcohol use. Instructors: Audrey Begun and Lisa Berger, Helen Bader School of Social Welfare. Class limit: 30.

### P The Wellness Project

Learn about the activities and findings of a 16-week, community-based nutrition and exercise program for a low-income population. Instructor: Jean Bell-Calvin, College of Nursing. Class limit: 30.

### Q Climbing up your family tree

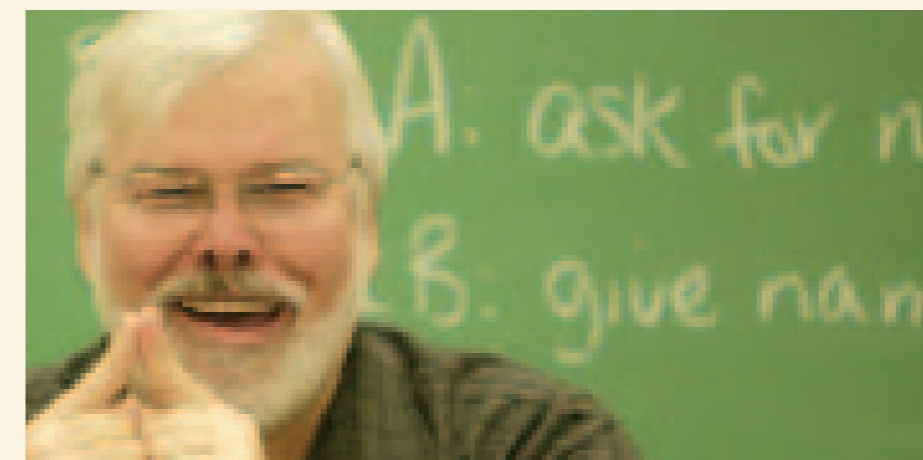
Learn the basics of family history research, including how to conduct effective interviews, locate distant relatives and use a variety of genealogical resources. Instructor: Kim Beck, School of Continuing Education. Class limit: 20.

### R Join a great discussion of a great work

Join David Mulroy, director of UWM's Great Books program, in a reading and in-depth discussion of several of Emily Dickinson's short poems. No advance preparation needed. Class limit: 20.

### S Long-term care insurance: Facts, myths and frauds

A quick consumer guide to long-term care insurance, including care options, types of coverage, and scams to avoid. Instructors: Paul Haussman, School of Continuing Education, and Rick Sternkopf, Financial Network Investment Corporation. Class limit: 20.



## JUST FOR KIDS!

Calling all kids! Whether you like science, art, math or cheering for your favorite team, this year's classes for kids have something for you. All sessions are free; classes are available on a first-come, first-served basis.

### COLLEGE FOR KIDS

#### SESSION 1 9-10:15 A.M.

**T Brush, paint and pigment (Grades K5-2)**  
Experiment with tempera, acrylic and watercolor paints. Learn how to bring your colors alive. Instructor: Ming Yon Blackwall. Class limit: 16.

**U Biology (Grades 3-5)**  
You won't believe all the interesting little things you'll find using a microscope. And you get to practice dissection on food or specimens. Instructor: Jocelyn Sulsberger. Class limit: 16.

**V Chemistry (Grades 6-8)**  
Mix it up with the mysteries and methods of chemistry. Perform exciting and safe experiments. Please bring an old shirt or apron. Instructor: Aaron Shapiro. Class limit: 16.

#### SESSION 2 10:30-11:45 A.M.

**W Start drawing! (All grades welcome)**  
Learn the concepts of space, proportion and tone that you can use to create great imagery. Instructor: Ming Yon Blackwall. Class limit: 16.

**X Wacky world of numbers (Grades: K5-2)**  
How can you estimate the number of seeds in a watermelon or the number of chips in a chocolate chip cookie? Join us for an adventure in the wacky world of numbers. Instructor: Jennifer Dwyer. Class limit: 16.

**Y Biology (Grades 6-8)**  
You won't believe all the interesting little things you'll find using a microscope. And you get to practice dissection on food or specimens. Instructor: Jocelyn Sulsberger. Class limit: 16.

**Z Chemistry (Grades 3-5)**  
Mix it up with the mysteries and methods of chemistry. Perform exciting and safe experiments. Please bring an old shirt or apron. Instructor: Aaron Shapiro. Class limit: 16.



#### CHEER/DANCE CLINIC SESSION 2 ONLY 10:30-11:45 A.M.

**CD Cheerleading and dance team clinic (Grades 1-8)**  
The UWM cheerleaders and dance team show you what it takes to rev up the Panther spirit in this combined clinic. No experience is necessary – just dress in your favorite sports attire and athletic shoes.

*For more information on Alumni College 2005, including any additions to the course listings, call John Bartel at the UWM Alumni Association, 414-906-4665, or visit the Alumni College website at [www.alumnicollege.uwm.edu](http://www.alumnicollege.uwm.edu).*

## COME HOME FOR LUNCH!

After Alumni College, join us for the 2005 Homecoming Luncheon. Wrap up your morning with a delightful, sit-down luncheon in the Union Ballroom. Hear a campus update, enjoy UWM student musical "stars," and meet the Wisconsin State College Class of 1955, on campus this weekend for their 50th Reunion.

Parking is available for a minimal cost in the UWM Union underground parking lot (enter from Kenwood Boulevard.) Free parking also is available all day in the surface lot just east of Cunningham Hall, 1921 E. Hartford Ave. (enter from Hartford Avenue).

**Saturday, Oct. 15**  
**UWM Union Ballroom, first floor**  
**2200 E. Kenwood Blvd.**  
**Reception: 11:45 a.m.**  
**Luncheon and program: 12:15-1:30 p.m.**  
**\$15 per person**

### ALUMNI COLLEGE 2005 REGISTRATION FORM (photocopy for multiple participants)

Name \_\_\_\_\_  
Address \_\_\_\_\_  
City, State, Zip \_\_\_\_\_  
Phone \_\_\_\_\_ Email \_\_\_\_\_

#### SESSION 1: 9-10:15 A.M.

First choice \_\_\_\_\_  
Second choice \_\_\_\_\_  
Third choice \_\_\_\_\_

#### SESSION 2: 10:30-11:45 A.M.

First choice \_\_\_\_\_  
Second choice \_\_\_\_\_  
Third choice \_\_\_\_\_

### HOMECOMING LUNCHEON

I/we plan to attend the Homecoming Luncheon  
Number of luncheon tickets @ \$15 each \_\_\_\_\_  
Total amount due \$ \_\_\_\_\_  
Make checks payable to UWM Alumni Association

Mail completed registration form to:  
**Alumni College 2005**  
**UWM Alumni Association**  
**P.O. Box 413**  
**Milwaukee, WI 53201-0413**

You may also register and pay online at:  
**[www.alumnicollege.uwm.edu](http://www.alumnicollege.uwm.edu)**

# 2005 ALUMNI ASSOCIATION AWARDS

Twelve graduates of UW–Milwaukee are recipients of this year's UWM Alumni Association awards. Awardees were honored at the 2005 Awards Reception in May. Distinguished Alumnus award winners also were recognized at Spring Commencement.

## DISTINGUISHED ALUMNUS AWARD



**ROBERT HARRIS JR.**  
Robert Harris Jr. ('69 MS Educational Leadership, '54 BS Upper Elementary Education) is a retired educator, coach, assistant professor and civic leader. He has

distinguished himself through his service to his profession and his community. He was the second African American to serve on the Milwaukee Fire and Police Commission. A former boxer, he also was a pioneer in athletics, becoming the first African American high school basketball referee in Wisconsin.

Harris has taught at almost every level. He has been an assistant professor at UWM, principal at St. Thomas Aquinas Middle School and at Urban Day School, football coach at North Division High School, supervisor of the Milwaukee Public Schools Division of Recreation and Community Education, and associate director of the Milwaukee Youth Initiatives for the Senator Herb Kohl Foundation.

He currently serves as president of the board of directors of the Milwaukee Police Athletic League.

Despite his many awards, he is most proud of his continued involvement with Alpha Phi Alpha and its local affiliate, Delta Chi Lambda. Harris joined this fraternity for African American men in 1948.

Harris also is an unwavering advocate for UWM, the Alumni Association and the UWMAA African American alumni constituency. He received the UWM Alumni Citizenship Award in 2002.

#### PAUL HUMKE

Paul Humke ('72 PhD, '68 MS, '67 BS Mathematics) is professor of mathematics at St. Olaf College in Minnesota. He began his career as a lecturer at UWM, and has long been devoted to his alma mater.

Humke has helped recruit high school students to UWM's College of Letters and Science, taught in local grade schools, and has worked tirelessly mentoring students and PhD graduates who seek careers in mathematics, both at UWM and St. Olaf.

His most remarkable activity is his involvement with Pro Mathematica Arte, a nonprofit corporation sponsoring Budapest Semesters in Mathematics. Humke is the North American director of this program, which provides unique opportunities for math students to study abroad.

He also is a founding editor and managing editor of Real Analysis

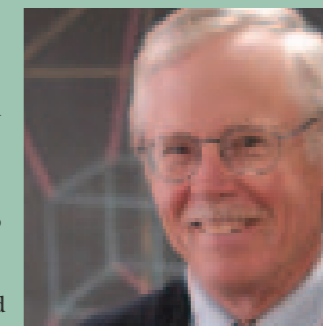
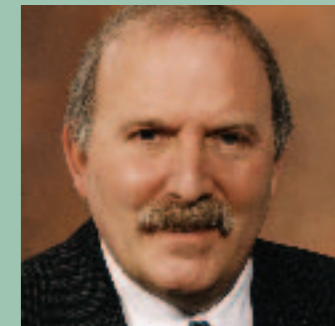
Exchange, a mathematics research journal, and pursues his own active research agenda. A former Fulbright Scholar to Hungary, he maintains ongoing research projects with colleagues in that nation.

#### PAUL NANNIS

Paul Nannis ('76 Master of Social Work) is vice president for government and community relations at Aurora Health Care. In this position, he works closely with local leaders to ensure continued high standards for health care quality, access and service.

Nannis's former positions offer an indication of the depth of his involvement in health care in Wisconsin. They include commissioner of health for the City of Milwaukee; a director within the Department of Health and Human Services Health Resources and Services Administration (a \$6 billion agency); senior program officer for the Robert Wood Johnson Foundation, Princeton, N.J., and executive director of the Sixteenth Street Community Health Center in Milwaukee.

His professional affiliations have ranged from the National Drinking Water Advisory Council of the Environmental Protection Agency to the Healthy People 2010 Steering Committee. Under the



guidance of the Surgeon General, this committee helped set the nation's health objectives.

Nannis's continued involvement with UWM includes his work as a member of the Board of Visitors. For the Helen Bader School of Social Welfare, he serves on the Dean's Advisory Board, the newly formed Dean's Cabinet and the Constituent Alumni Association.

#### DAVID RAYSICH

With satellite offices in Madison and in Illinois, Plunkett Raysich Architects is one of Wisconsin's largest architecture firms. Managing partner David Raysich ('78 Master of Architecture, '74 BS Architectural Studies) has been involved in every aspect of the firm's



phenomenal growth.

Because of his belief in civic involvement, his employees are encouraged to take 40 hours of their work time to volunteer in the organization of their choice. Raysich's own volunteer efforts include serving as the Wisconsin

Chapter chairman of the board for the National Multiple Sclerosis Society, working on a board of the Medical College of Wisconsin and serving on a Community Development Authority Commission for the City of Brookfield.

Raysich also demonstrates a continuous commitment to UWM's School of Architecture and Urban Planning (SARUP). His firm employs more UWM graduates than any other architectural firm in Wisconsin. Each year, Plunkett Raysich Architects offers a scholarship for a SARUP student, the first scholarship to be established in the school by a local practice. In addition, at any one time the firm may have four or five interns from SARUP working at its offices to provide them with hands-on experience.

## GOLD (GRADUATE OF THE LAST DECADE) AWARDS

#### CAROLYN K. DENNIS

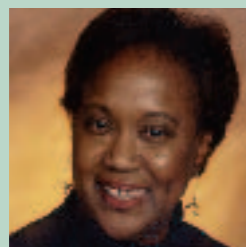
Nominated by the School of Business Administration

Carolyn Dennis ('98 EMBA) is responsible for the integrity of financial reporting, systems, and policies and procedures for the Operations Division of Miller Brewing Company.

This includes financial oversight of six domestic breweries, engineering, supply chain, procurement, brewing research and quality, and international operations.

A staunch supporter of UWM, Dennis says that her experience in the EMBA program was one of the most rewarding in her life, providing not only managerial skills that she uses daily, but also lasting friendships.

Her commitment to UWM and to the EMBA program has included membership on the EMBA 30th Anniversary Campaign Committee, which raised a quarter of a million dollars on behalf of the program.



#### ABDULLA EL-REYES

Nominated by the College of Letters and Science

Abdulla El-Reyes ('96 PhD, '94 MA English) is a professor of applied linguistics at the United Arab Emirates University and head of the Center for Documentation and Research for the president of that country.

El-Reyes has used his education to dramatically benefit his home country. After graduating from UWM, he worked closely with Dean Emeritus William Halloran in the creation of Zayed University, a new national university in the United Arab Emirates (UAE).

His position as an archivist has resulted in the creation of a United Arab Emirates archival law and brought Fulbright Scholars to the UAE, among other achievements.

In addition, El-Reyes has been very active in the United Arab Emirates National Olympic Committee. He is on the executive boards of several international professional organizations.



#### ALLYSON GREEN

Nominated by the Peck School of the Arts

Allyson Green ('01 MFA Performing Arts) is a choreographer, performer and teacher.

While studying at UWM, she was a recipient of the prestigious Jacob Javits Fellowship and taught dance classes.

Today, her company, Allyson Green Dance, has performed to critical acclaim in diverse locations around the world. It also is produced annually in New York by such venues as Danspace Project, Dance Theater Workshop and Symphony Space.

Green's collaboration with international choreographers and visual artists has put her projects at the forefront of innovation in merging dance with interactive technology. Recent projects include performances at the Bucharest International Dance Festival and a company season at the San Diego Museum of Art.



#### YI HONG

Nominated by the School of Information Studies

Yi Hong ('01 Master of Library and Information Science) is an information resource specialist at the Medical College of Wisconsin.

In her work in medical informatics, she typifies the new ways that graduates of the School of Information Studies contribute to the community. She planned, organized and implemented the Medical College's HealthLink website, a major resource for consumer health information. She continues to evaluate and select updated content for that site.

Hong improved access to medical information at three central-city clinics through the ClinicLink project. She obtained funding for that project from the National Library of Medicine, and worked with Medical College librarians to train clinical staff on the new system.

She is active in her profession, and has written two textbooks and 35 papers related to information organization.

#### MARIADELINA LOPEZ

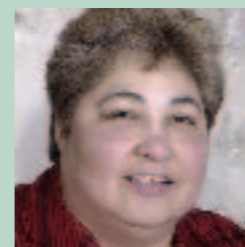
Nominated by the Helen Bader School of Social Welfare

Mariadelina Lopez ('97 MS, '96 BS Social Work)

demonstrates a deep-seated commitment to helping young people as a school social worker in the Bilingual Unit of the Department of Social Work within the Milwaukee Public Schools.

Lopez is so engaged with the minority communities that in 2004 she was awarded the School Social Worker of the Year award from the Milwaukee Public Schools.

Her community service includes contributions as a board member of the Wisconsin Nicaraguan Alliance Ecumenical Refugee Council. When an earthquake and floods struck Nicaragua during the late 1990s, she helped coordinate services, raise funds and provide humanitarian aid to that country. And in the 1980s, Lopez helped raise and deliver \$10 million in aid to Nicaragua.



#### ERIC PONTO

Nominated by the School of Architecture and Urban Planning

Eric Ponto ('96 Master of Architecture, '89 BS Architectural Studies) is an award-winning architect with Engberg Anderson Design Partnership in Milwaukee.

He has contributed to the design of many high-profile projects in the state, including the Marquette School of Dentistry and the 180,000-square-foot La Crosse Health Science Center.

He also has worked on the Wisconsin State Capitol renovation and the Marcus Center for the Performing Arts' Kidz Stage and East Expansion.

Ponto has spent countless volunteer hours in support of the School of Architecture and Urban Planning, where he has taught classes as an adjunct faculty member.

He also has organized many successful school alumni activities, and has been instrumental in building alumni participation in the downtown Milwaukee ARTWALK.

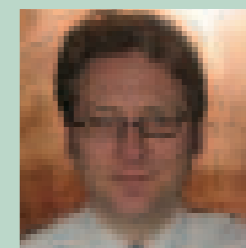
#### JENNIFER RAYL

Nominated by the College of Health Sciences

Jennifer Rayl ('95 BS Occupational Therapy) is the owner of Home Instead Senior Care of Milwaukee.

Rayl and her company provide services for the elderly and adults with physical and mental disabilities, developing therapeutic treatment plans for the elderly, and providing 24-hour assistance for in-home living.

Locally, Home Instead Senior Care has helped maintain the safety, independence and quality of life of more than 1,000 seniors in the greater Milwaukee community through non-medical in-home care.



In addition, Home Instead Senior Care has provided employment to UWM students in occupational therapy, nursing and social welfare, and also has employed skilled and non-skilled workers from throughout the Milwaukee area.

Rayl makes regular presentations to UWM students on her role as occupational therapist and business owner.

#### SUDIPTA SEAL

Nominated by the College of Engineering and Applied Science

Sudipta Seal ('96 PhD Materials Science and Engineering) is a professor at the University of Central Florida (UCF), where he also serves as associate member of the Biomolecular Science Center and is coordinator of the university's nano-initiative.

Seal has pioneered technologies in nano-structural coatings and free-standing powders for various applications in sensors and optics. He also is working on the use of nano-particles in biological applications.

Seal was one of the principal authors of the graduate programs in materials science, mechanical materials engineering and aerospace engineering at UCF.

He also is head of the university's nano-commission and is helping to coordinate a \$2.5 million state initiative for nano-research at UCF. Despite his busy schedule, Seal regularly visits and collaborates with UWM faculty on research.

*Nominations are now being accepted for the 2006 UWM Alumni Association Distinguished Alumnus and GOLD awards. For information and nomination forms, call 414-906-4662 or email eph@uwm.edu. The nomination deadline is Dec. 1, 2005.*



## ANDREA SIMPSON NAMED NEW ALUMNI DIRECTOR

By Beth Stafford

For Andrea Simpson, new executive director of the UWM Alumni Association and director of alumni relations, this is a great time to lead an organization that hinges on Panther Pride.

Simpson believes the cutting-edge initiatives of Chancellor Carlos Santiago, world-class academic programs and a first-ever trip to the NCAA Sweet Sixteen combine to present a great opportunity.

"I want to harness the energy and excitement that surrounds the university to build programming and services that will engage all 115,000 Alumni Association members," says Simpson.

"We are proud to have Andrea join the UWM team," says Tom Luljak, vice chancellor of university relations and communications. "Her extensive experience in alumni relations will be extremely valuable as the association continues to serve our members."

Simpson was director of alumni relations and the Annual Fund for the University of Wisconsin-Parkside for seven years before coming to UWM. She will be a familiar face to many UWM alums, since she served as constituent/corporate club coordinator for the UWMAA from 1988 to 1991.

She left UWM in 1991 to serve as director of alumni relations for Columbia College of Nursing in Milwaukee, then served as director of the office of philanthropy at Sinai Samaritan Medical Center (1996-98) before taking the position at Parkside.

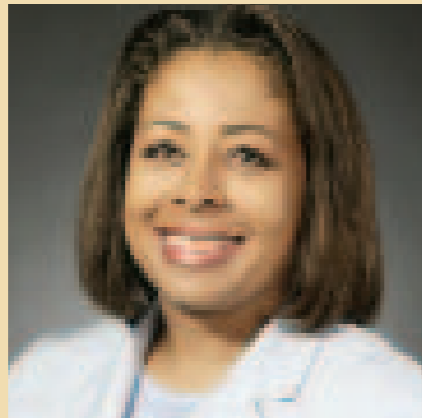
The alumni association at UW-Parkside operates on a no-dues basis, which the UWMAA has just adopted. Simpson brings a wealth of knowledge to UWM regarding that membership format.

For the Annual Fund at UW-Parkside, Simpson worked with donors, academic departments and the director of student scholarships to solicit funds and develop long-range goals for the scholarship program.

This experience dovetails the priorities of a dues-free UWMAA. Tim Schoewe, new UWMAA board president, says, "Going dues-free will allow us to focus on programming for alumni, raising money for scholarships for current and future students, and advocating on behalf of the university."

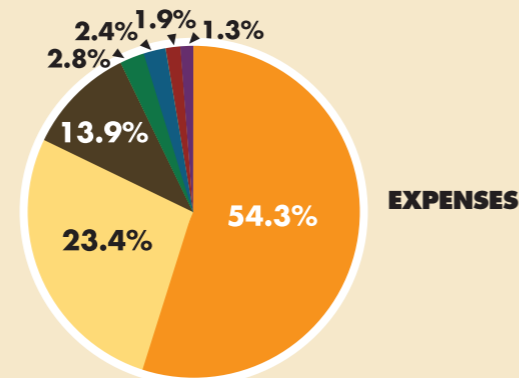
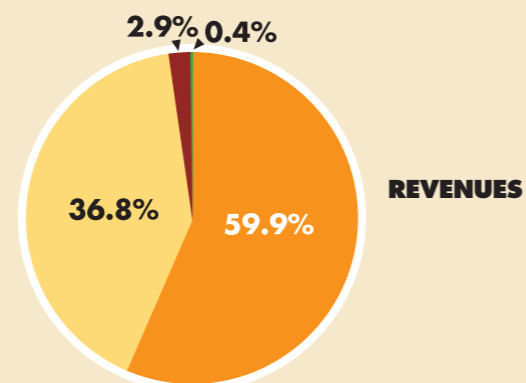
The goals Simpson has established for herself include "enhancing the services we provide and increasing our programs and events." She looks forward to meeting UWMAA members, and welcomes their participation and support.

"Basically, the success of the UWMAA – and any other nonprofit organization – depends on volunteers," Simpson says. Knowing how important volunteers are, she herself has been deeply involved in both campus and community organizations. While at UW-Parkside, she served on a number of university committees. In the community, Simpson was active in organizations ranging from Junior Achievement to Meals on Wheels. She plans to continue to serve. "There is such a sense of satisfaction in volunteering," Simpson says. "We are all connected – every little bit that we do has an impact."



PETE AVILAND

# UWM ALUMNI ASSOCIATION Annual Report



### REVENUES

Membership Dues/Marketing Revenue	\$ 313,386
External Support	\$ 192,363
Outreach Programs	\$ 15,130
Investment Income	\$ 2,317
<b>Total</b>	<b>\$ 523,196</b>

### EXPENSES

Administrative	\$ 100,010
CAA Allocation & Expenses	\$ 12,157
Honors Committee	\$ 10,124
Membership & Marketing	\$ 232,110
Outreach Program	\$ 59,249
Board Administration	\$ 5,714
Awards Reception	\$ 8,096
<b>Total</b>	<b>\$ 427,460</b>

Copies of the UWM Alumni Association's complete financial statements, including the independent auditor's report, are available upon request.

—Timothy R. Schoewe '71  
President, Board of Trustees

—Andrea Simpson  
Executive Director  
UWM Alumni Association

### UWM ALUMNI ASSOCIATION BOARD OF TRUSTEES 2005-06

#### OFFICERS

President: Timothy R. Schoewe '71  
Vice President: Christine J. Faltz '96  
Secretary: Deryl Davis Fulmer '90, '95  
Treasurer: Lawrence J. Schnuck '78, '86

#### EXECUTIVE COMMITTEE

Constituent Alumni Association Committee Chair:  
Angela S. Brunhart '77, '97  
Honors Committee Chair: Sarah Wilbur '96  
Membership Marketing Committee Chair:  
Dean D. Rennie '88  
Nominating Committee Chair: Gary L. Williams '75, '77, '91  
Member at Large: Joan M. Prince '77, '82, '92, '99

#### TRUSTEES

Rafael J. Acevedo Jr. '99  
Georgia M. Cameron '80, '90  
Filippo Carini '88  
Tyrone P. Dumas '77  
Carmelo Gaudio '97  
Rick A. Grobschmidt '80  
Elizabeth E. Hoppe '98, '99  
Geoffrey F. Hurtado '74, '76, '88  
Jack S. Kaye '90, '00  
Martin W. Meyer '79  
Allyson D. Nemeč '90  
Dennis J. Pawlak '73, '75  
Lena C. Taylor '90

#### EX-OFFICIO MEMBERS

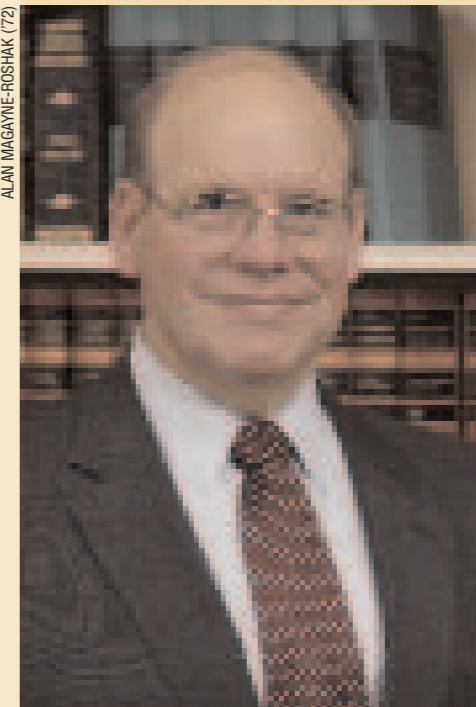
Chancellor: Carlos E. Santiago  
Executive Director, UWMAA: Andrea Simpson  
President, UWM Student Association: Russ Rueden  
Immediate Past President: Joseph Czarnecki '75, '77  
Chair, UWM Foundation Board: Mark Reinemann '78, '80  
President, Emeritus Board of Trustees: Larry Reed '67, '69  
Distinguished Emeritus Trustee: John P. Tierney '36

#### CONSTITUENT ALUMNI ASSOCIATION TRUSTEES

Adult & Continuing Education: Ryan Lefeber '00, '02  
African American Alumni: Adrienne E. Davis '75, '77  
Architecture & Urban Planning: Eric J. Ponto '89, '96  
Education: Marshall L. Gallant Sr. '73, '79  
EMBA: Margaret Hines '98  
Engineering & Applied Science: Richard S. Schreiner '82  
Health Sciences: Kathleen M. Olewinski '86  
School of Information Studies: Cynthia Jill Cherny '71, '85, '91  
Latino Alumni: Rafael J. Acevedo Jr. '99  
Letters & Science: Jessica L. Lanke '98  
Nursing: Carrie Weddle '90, '96  
Helen Bader School of Social Welfare: Ecclesiastes Allen '96

## TO OUR ALUMNI AND FRIENDS:

ALAN MAGAYNE-ROSHAK (72)



I became president of the UWM Alumni Association Board of Trustees on July 1 of this year – the same day that our 10,000-member association became a dues-free organization that now includes all 115,000 UWM alums as members.

Going dues-free will allow us to focus on programming for alumni, raising money for scholarships for current and future students, and advocating on behalf of the university.

It was just one of the exciting new developments for the UWMAA during the past year.

We entered into a new affinity credit card program with US Bank. Through this program, a percentage of every purchase made on the UWM Alumni Association Visa Platinum card will go toward funding our alumni programs and scholarships.

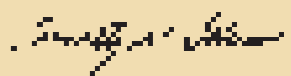
Building and strengthening student scholarship programs to ensure that UWM's proud academic tradition will continue is one of the UWMAA's key roles. Toward that end, the Alumni Board approved an increase in the number and monetary amount of UWMAA Alumni Memorial Scholarships presented annually.

Our Alumni Association Emeritus Board launched Panther Advocates – a grassroots coalition of UWM alumni who speak in support of the university to elected officials and the larger community. I encourage you to learn more about Panther Advocates and consider becoming an active advocate yourself. Information is available on the Alumni Association's website, [www.uwm.alumni.edu](http://www.uwm.alumni.edu).

I know we all reveled in the men's basketball team's march to the NCAA Sweet Sixteen. The UWMAA sponsored pre-game rallies in Milwaukee and Green Bay, and held a reception and viewing party for the hard-fought final game against the University of Illinois in Rosemont, Ill.

In August, we welcomed Andrea Simpson as our new executive director of the Alumni Association and director of alumni relations. We wish her a world of success in her new position. We also appreciate and applaud the tireless work of Barbara Flint, who left the Alumni Association as executive director in March of this year. Fortunately for us, she remains with UWM, working to nurture a Chicago-area UWM alumni presence.

As UWM heads toward its 50th anniversary in September 2006, I encourage you to learn more about UWM, our Alumni Association and how you can become involved in moving both of these institutions forward into the future.



—Timothy R. Schoewe '71  
President, Board of Trustees  
UWM Alumni Association

# UWM FOUNDATION Annual Report

## GREETINGS!



PETE AMLAND

It is my pleasure to be writing to you for the first time as chair of the UWM Foundation Board of Directors. First, I want to extend my deepest thanks to Jill Pelisek, whose commitment to UWM and excellent leadership of the Foundation Board over the past three years will be hard to equal. Of note was her dedication to rallying board participation in the university's scholarship campaign, which resulted in 100 percent participation from board members and over \$1 million in gifts.

The Foundation had a banner year in 2004-05. The market value of the Foundation's investments increased \$7.5 million, nearly 19 percent over last year. At the same time, the Foundation was able to reduce its administrative fee by 13 percent. I am grateful to our exceptional Board of Directors and to the Foundation staff, who were instrumental in making this success possible.

The Office of Development, under the direction of Lucia Petrie, saw a dramatic increase in the number of personal visits development officers made to the university's alumni and friends, which helped UWM strengthen existing relationships and forge new connections.

Barbara Flint, the former director of UWM's Alumni Association, joined the development team this year and is working to establish a regional presence for the university in the Chicago area.

In the 2004-05 fiscal year, the university raised a record \$20.3 million in gifts, pledges and planned gift commitments, surpassing the prior year's record by \$1.45 million. Much of that success is thanks to the members of the Chancellor's Society, our donors of \$1,000 and above in the current fiscal year.

The UWM Foundation received two spectacular major gifts this year from local foundations (see "Highlights" on page 26), each of which will help UWM launch a major new initiative.

Most important, I thank and acknowledge every donor who made a contribution to UWM this past year. Each and every gift, no matter the size, is significant to the university and helps empower us to offer an excellent education to a diverse student body. As you know, we ask you to give each year – hence the name Annual Fund – because it is your consistent support that sustains and furthers our schools and programs.

To learn more about giving to UWM through the 2006 Annual Fund, or about the UWM Foundation's investment policies and history, contact Lucia Petrie at 414-229-3011 or [petrie@uwm.edu](mailto:petrie@uwm.edu).

Sincerely,



—Mark Reinemann '78, '80  
Chair, Board of Directors  
UWM Foundation

## UWM FOUNDATION INC. BOARD OF DIRECTORS 2005-06

### Officers

Chair: Mark Reinemann '78, '80  
Past Chair: Jill G. Pelisek '80, '83  
Secretary: Mary T. Kellner '78  
Treasurer: Paul J. Napieralski '72, '74  
Development Committee Chair: Mark E. Brickman  
Marketing and Communications Committee Chair:  
Jacqueline Moore Bowles  
Nominating Committee Chair: David J. Lubar  
Operations Committee Chair: Art Smith  
Scholarship Committee Chair: F. William Haberman  
Resource Diversification Task Force Chair: Bruce T. Block  
Volunteer Pathways Task Force Chair: Daniel J. Bader

### Directors

Lyle A. Balistreri  
James R. Blinka '82, '85  
David D. Buck  
Mary Emory  
Christina H. Fiasca '80  
John M. Howard '80  
Allan J. Klotsche Jr. '87, '94  
Ronald V. Krizek '69  
Kenneth W. Krueger '78  
Daniel J. Minahan  
David O. Nicholas '87  
Shaunna L. Peterson  
Mark W. Purnell  
John S. Scheid  
Charles F. Severson  
Allen M. Taylor  
Daryl J. Waszak

### Retired from Foundation Board service as of Sept. 28, 2005:

Mark G. Doll '71, '75  
David T. Kahler '99 (Honorary)  
Jere D. McGaffey  
Keith K. Spore '67  
Harris J. Turer '88

### Distinguished and Emeritus Directors

Robert E. Carlson  
James T. Collins Jr.  
Roger L. Fitzsimonds '60, '71, '89 (Honorary)  
Curtis C. Gielow  
Kitty Gute  
Frank E. Horton  
Ralph C. Inbusch Jr.\*  
William R. Johnson  
George C. Kaiser  
Dennis J. Kuester '66, '96 (Honorary)  
Sheldon B. Lubar '88 (Honorary)  
Paul Meissner  
Paul Melrood '41  
David F. Nelson  
Patricia J. Nelson '77  
Roger D. Peirce  
Isabelle Polacheck\*  
James D. Scheinfeld  
John H. Schroeder  
Clifford V. Smith Jr.  
Gerald M.H. Stein '59  
Myra Taxman '56  
Nathaniel K. Zelazo '86 (Honorary)  
Robert S. Zigman  
Edward Zore '68, '70, '05 (Honorary)

\* deceased

## GIFTS & PLEDGES BY DESIGNATION

Departmental	\$ 4,815,942
Special Projects	\$ 4,274,555
Scholarships	\$ 3,985,674
Research	\$ 1,324,670
Venture Fund	\$ 89,040
Community Service	\$ 29,994
Planned Gifts*	\$ 6,299,620
<b>Total</b>	<b>\$ 20,819,495</b>

## GIFTS & PLEDGES BY SOURCE

Foundations	\$ 6,433,786
Corporations	\$ 3,100,091
Individuals	\$ 1,981,756
Alumni	\$ 1,094,931
Others	\$ 993,375
Family Foundations	\$ 741,857
Bequests – Alumni	\$ 162,905
Bequests – Non-Alumni	\$ 11,174
Planned Gifts*	\$ 6,299,620
<b>Total</b>	<b>\$ 20,819,495</b>

## GIFT RECEIVING ORGANIZATIONS

UWM Foundation*	\$ 19,663,307
Graduate School	\$ 1,124,020
UW Trust	\$ 32,168
<b>Total</b>	<b>\$ 20,819,495</b>

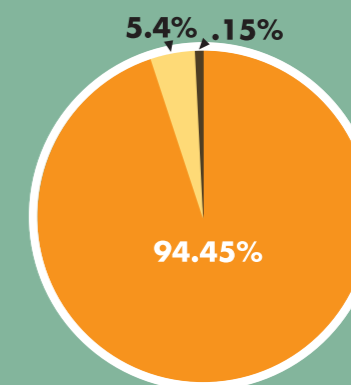
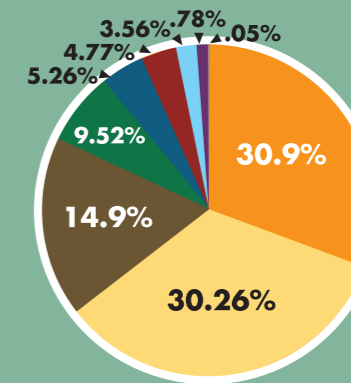
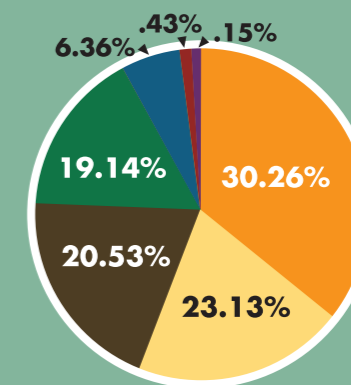
\*Includes planned gift commitments confirmed in writing.

## INVESTMENT AT MARKET VALUE

Year	Fixed Income	Cash Equivalents	Equities	Total Investment
2001	\$12,121,400	\$6,046,400	\$10,587,083	\$28,754,883
2002	\$15,616,201	\$1,363,645	\$11,448,973	\$28,428,819
2003	\$17,644,779	\$1,769,636	\$14,360,172	\$33,774,587
2004	\$19,925,162	\$2,419,216	\$17,933,828	\$40,278,206
2005	\$21,604,154	\$4,278,252	\$21,916,115	\$47,798,521

The university receives contributions through the UWM Foundation, the UWM Graduate School (primarily philanthropic research grants) and the UW Trust (gifts for UWM made through the UW System). The charts above show a breakout of gifts and pledges recorded this year.

Copies of the UWM Foundation's complete financial statements, including the independent auditor's report, are available upon request.



—Mark Reinemann '78, '80  
Chair, Board of Directors  
UWM Foundation

—Lucia Petrie  
Executive Director  
UWM Foundation

## UWM FOUNDATION HIGHLIGHTS 2004-05

- The university raised a record \$20.3 million in gifts, pledges and planned gift commitments during the fiscal year.
- The Argosy Foundation pledged \$1 million, which will serve as a planning grant for a new public policy institute at the university.
- The Jane Bradley Pettit Foundation pledged \$2 million to establish UWM's "Life Impact Program," a six-year pilot program for low-income students with children, designed to help break the cycle of poverty.
- The Chancellor's Society (a gift club that honors donors who contribute \$1,000 or more to any school or program at the university in the current fiscal year) welcomed 547 members in 2004-05, a 10 percent increase over last fiscal year.
- Donors to UWM committed a record-breaking \$6.3 million in planned gifts, representing a stunning 453 percent increase over the previous year.
- The university's faculty-staff campaign, known on campus as UWM Gives to UWM, raised a record \$423,202 for the year, a 14 percent increase over the previous year.
- The UWM Foundation reduced administrative fees by 13 percent.
- The Foundation introduced flexible funds, which are long-term in nature like true endowments but allow spending in case of insufficient earnings. Donors now have one more way to make a gift to UWM.



PHOTOS: PETE AMLAND



## Chancellor's Society Reception

Members of the Chancellor's Society for 2004-05 gathered for a reception in their honor on July 13 at the home of UWM Foundation Board member Mark Brickman and his wife Cheryl. Guests talked with Chancellor Carlos Santiago, Azara Santiago-Rivera and UWM deans, and also enjoyed tours of the Brickmans' gardens and farm.

During his remarks, the Chancellor reflected on the strides UWM has made during his first year in office and promised that furthering research and widening access to the university would continue to be his top priorities.

The Chancellor's Society honors the exceptional generosity of alumni, parents and friends, as well as corporations and foundations, who contribute \$1,000 or more to the university during the current fiscal year. Donors may elect to designate their gift to one school, college or program, or to divide their giving among several designations. For information about becoming a member of the Chancellor's Society, contact Tom Bjornstad, director of annual giving, at 414-229-3298 or [bjornsta@uwm.edu](mailto:bjornsta@uwm.edu).

# UW-MILWAUKEE Annual Report

## 2003-04 BUDGET HIGHLIGHTS

The 2003-05 State of Wisconsin budget cut \$250 million in general purpose revenue (GPR) funding from the UW System. Under the Governor's budget, the UW System budget will be cut by \$110 million in 2003-04 and \$140 million in 2004-05. For UW-Milwaukee, these budget cuts equate to base reductions of \$5,276,000 and one-time reductions of \$2,638,000. Both amounts include fringe benefits. UWM is also expected to eliminate about 89 FTE positions.

The UW budget reduction for 2003-05 will be offset by tuition increases approved by the Board of Regents. Tuition increases will reduce the net cut to \$100 million: \$60 million for 2003-04 and \$40 million for 2004-05. This represents the largest GPR biennial budget reduction in the university's history. Further, the budget makes no allowances for inflationary increases, although the state has provided increased GPR support for fixed costs (utility costs, debt service and fringe benefit adjustments) during the coming biennium. There was no funding for salary increases for 2003-04, and only 1 percent was provided for 2004-05.

Tuition increased by \$350 per semester for all students. This equates to increases of 18.7 percent and 11.6 percent for resident undergraduates and graduate students, respectively. For nonresidents, the increase is 4.2 percent for undergraduates and 3.4 percent for graduate students.

## 2003-04 FINANCIAL RESULTS HIGHLIGHTS

Compared to the 2002-03 fiscal year, UWM total expenditures increased by \$17.6 million (4 percent); total operating revenue increased by \$27.7 million (14 percent).

Tuition revenue increased by \$18.8 million (21 percent), primarily due to planned enrollment and the tuition increases noted above.

Federal grants and contracts revenue increased by \$2.6 million (8 percent), primarily due to federally funded research support.

Federal Direct Student Loan expenditures increased by \$11.9 million (17.9 percent) in 2003-04.

## 2004-05 BUDGET HIGHLIGHTS

The 2004-05 annual budget includes the second year of the GPR reductions for the 2003-05 biennium. These cuts, partially offset by tuition increases, represent the largest GPR reduction in the history of the UW System and UW-Milwaukee.

The Board of Regents approved tuition differentials, effective for fall 2004, within four schools/colleges: Peck School of the Arts, School of Business Administration, College of Engineering and Applied Science, and the College of Nursing. These student-initiated tuition differentials are expected to generate approximately \$1,207,000 of revenue for fiscal 2004-05.

Tuition was again increased by \$350 per semester for all students, undergraduate and graduate. This represents an 18.8 percent increase for resident undergraduates, a 10.4 percent increase for resident graduate students, and 4.1 percent and 3.3 percent increases for nonresident undergraduate and graduate students, respectively.

Pay plan increases of 1 percent, plus 10 cents per hour, were funded for both unclassified and classified staff. Funding was also provided for a one-time \$250 lump sum payment for unclassified and classified employees.

The campus identified \$2.2 million to be allocated to meet the specific needs of the campus in areas of improving program quality and student success and access.

—Carlos E. Santiago  
Chancellor

—Andrew J. Richards, Director  
Business and Financial Services

## UWM Statement of Current Funds Revenues, Expenditures & Other Charges Year Ended June 30, 2004

REVENUES	Dollars (Thousands)	Percent
<b>State Appropriations</b>	<b>\$119,997</b>	<b>34.2%</b>
<b>Operational Receipts</b>	<b>\$178,813</b>	<b>50.9%</b>
Tuition & Fees	\$109,193	31.1%
Auxiliary Enterprises	\$30,445	8.7%
Educational Activities	\$15,806	4.5%
Other Sources	23,369	6.7%
<b>Extramural Support</b>	<b>\$52,363</b>	<b>14.9%</b>
Federal Grants & Contracts	\$37,371	10.6%
State Grants & Contracts	\$14,992	4.3%
<b>TOTAL</b>	<b>\$351,173</b>	<b>100.0%</b>

## EXPENDITURES & TRANSFERS

<b>Education &amp; General</b>	<b>\$310,953</b>	<b>89.0%</b>
Instruction	\$131,122	37.5%
Research	\$30,098	8.6%
Public Service	\$15,354	4.4%
Academic Support	\$37,097	10.6%
Student Services	\$39,723	11.4%
Institutional Support	\$18,880	5.4%
Physical Plant	\$23,401	6.7%
Financial Aid	\$15,278	4.4%
<b>Auxiliary Enterprises</b>	<b>\$25,882</b>	<b>7.4%</b>
<b>Mandatory Transfers</b>	<b>\$2,088</b>	<b>0.6%</b>
<b>Depreciation</b>	<b>\$10,504</b>	
<b>TOTAL</b>	<b>\$349,427</b>	<b>97.0%</b>

Beginning Fund Balance	\$47,180
Net Increase in Fund Balance	\$1,746
Ending Fund Balance	\$48,926

## UWM Board of Visitors 2005-06

UW-Milwaukee's Board of Visitors was created in 1977 by the UW System Board of Regents "to become informed about the mission, purposes, achievements and problems of the University of Wisconsin-Milwaukee." The board meets four times a year, with 18 to 20 members who are asked to serve by the Regents. Members are drawn from business and industry, education, and health care organizations throughout the Greater Milwaukee area.

### Officers

President: Frances B. Swigart  
First Vice President: Richard J. White

Russ Rueden (Student Association)

Jane M. Schneider  
Jeff Sherman  
Art Smith (Executive Board)

### Visitors

James T. Barry III  
Robert H. Coons Jr.  
Carol L. Fuchs '93  
Helen J. Harris '64 (Executive Board)  
Robert Harris Jr. '54, '69  
Jackie Herd-Barber  
Nancy Hernandez '83  
Kate M. Huston (Past President)  
Beth Nichols '95

Terri Weiland '87

JoAnne Williams  
DeVona Wright

### Ex-officio

John R. Johnson  
Tom Luljak '95  
Todd Montgomery '75, '84  
Joan Prince '77, '82, '92, '99  
Carlos E. Santiago

## 1950s

**Richard Lee Dawley** ('58 BS, '66 MS Education) has written and published a second book on the Amish in Wisconsin, titled "Amish: Journey in Contentment." His first book was "Amish in Wisconsin." A retired educator with MPS and MATC, he is now a consultant, Amish advocate and lecturer for the UWM Learning in Retirement program and other organizations. He is also a guide for several companies offering tours to Amish settlements in Wisconsin.

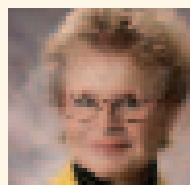
## 1960s

**Allen Caucutt** ('63 MA, '57 BA Art Education) received the Outstanding Teacher Educator of the Year award from the Student Wisconsin Education Association. Caucutt is a senior lecturer in art at UWM and serves on the UWMAA Emeritus Board.

**Michael LeMay** ('66 MA, '65 BS Political Science) recently retired from California State University-San Bernardino after 34 years in academic positions.

## 1970s

**Mary Pieschek** ('70 BA Mass Communication) has joined the Brown County United Way as the director of development and



Mary Pieschek

communications. She currently is national chair of the Public Relations Society of America's Strategic Social Responsibility Professional Development section; a member of the Wisconsin Supreme Court Ethics 2000 Committee, and teaches public relations at the University of Wisconsin-Green Bay. She received the UWM Alumni Association's Fox Valley Alumnus of the Year Award in 1998.

**Juan Miguel Prohaska** ('70 BA History) obtained a bachelor's degree in Education from the University of Toronto in 1975 and has been an elementary-school teacher with the Toronto Catholic School Board since then.

**Peter A. McCoy** ('71 PhD, '68 MS Mathematics) is a professor of mathematics at the U.S. Naval Academy. He is president-elect of the Washington-Baltimore Section of the Society for Industry and Applied Mathematics.

**Ann Campbell** ('72 BS Nursing) is chief nursing officer (CNO) for Virtua Health, a multi-hospital health care system headquartered in Marlton, NJ. She also serves as vice president for patient care at Virtua Memorial Hospital Burlington County. Campbell recently completed the Johnson & Johnson-Wharton Fellows Program in Management for Nurse Executives, which focuses on business and financial models and their impact on patient care delivery within a health system.

**Randy S. Nelson** ('74 BBA), a partner in the Milwaukee office of the law firm Weiss Berzowski Brady LLP, has been selected for inclusion in the 2005-06 edition of Marquis' "Who's Who in America."

**Jacqueline Haessly** ('76 MS, '71 BS Education) is the founder and president of Milwaukee-based Peacemaking Associates. She is an internationally recognized peace and family educator, serving as a consultant to local, national and international peace, justice, religious, education, family, community, government and business organizations.

**Dennis R. McBride** ('76 BA Mass Communication) has been re-elected chairman of the City of Wauwatosa Civil Service Commission. McBride, a senior trial attorney in the U.S. Equal Employment Opportunity Commission's Milwaukee District Office, has served on the Civil Service Commission since 1992. He also served as chairman from 1995-98 and in 2004.

**Marilyn Fox** ('78 BFA Fine Arts) is the preparator for the Division of Vertebrate Paleontology at the Yale Peabody Museum of Natural History in New Haven, Conn. She recently participated in the First

International Workshop for Micropreparation of Fossil Vertebrates held in Trelew, Argentina, where she instructed preparators from Argentina and Brazil in aspects of molding and casting small fossils.

**Jim Armstrong** ('79 MA English) owns a strategic communications firm called Good for Business in Madison. The firm, which specializes in working with clients whose work is socially conscious, recently received a Dane County Small Business Award.

**Steven Branca** ('79 MA Urban Planning) is a program officer for Sustainable Development and Environment, The Johnson Foundation, in Racine.

**Laurie Vickroy** ('79 BA Comparative Literature) has been promoted to full professor at Bradley University in Peoria, Ill., and has co-edited a book, "Critical Essays on the Works of American Author Dorothy Allison" (Edwin Meller, 2004).

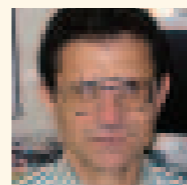
## WHERE ARE THEY NOW?

**A**llan A. Buergin, retired lieutenant colonel with the U.S. Army, sent this photo of UWM ROTC cadets in 1964 who were members of the Pershing Rifles, the national honorary military society for college students.

"I was an assistant professor of military science at UWM from 1960 to 1964," Buergin writes. "It was one of my most enjoyable tours in my military career. I advised the Pershing Rifles company of cadets which participated annually in rifle matches and drill meets with units from other schools."

"The most exciting and gratifying event was in 1964 when the cadets competed against approximately 75 other drill teams in the National Exhibition Drill Meet during the Cherry Blossom Festival in Washington, D.C. UWM's Black Jacks exhibition drill team won first place, and were invited to repeat their routine for the public the next day as part of the parade on Pennsylvania Avenue. The cadets floated above ground on the return bus trip to Milwaukee."

Buergin would like to hear from his former cadets. All Pershing Rifles are invited to send their addresses/email addresses to: [alumni@uwm.edu](mailto:alumni@uwm.edu) or UWM Today, P.O. Box 413, Milwaukee, WI 53201-0413. We will forward them to Buergin.



Ahmed I. Zayed

**Ahmed I. Zayed** ('79 Ph.D. Mathematics) is chair and professor in the Department of Mathematical Sciences at DePaul University in Chicago.

## 1980s

**Steven Hoese** ('80 MA Urban Planning) is a zoning administrator in Henderson, N.V.



Erv Bluemner

**Erv Bluemner** ('80 MS Engineering, '77 BS Mathematics) is vice president for product marketing and transportation for Red Prairie, a technology

solutions firm based in Waukesha, Wis.

**Reza Taheri** ('80 BS, '82 MS Computer Science) is a master software engineer for Hewlett Packard in San Jose, Calif.

**Timothy D. McBride** ('81 BA Economics & Journalism) is professor of health management and policy in the School of Public Health at St. Louis University. He is a member of several national committees, including the Rural Policy Research Institute's Rural Health Panel, which provides expert advice on rural health issues to the U.S. Congress and others. He is married and has two children, ages 13 and 10.

**Wayne Wedell** ('81 BBA Management Information Systems) is president of WorkWise, a software development company that was spun off from the Swedish-owned Milwaukee software developer Effective Management Systems Inc. Wedell began his career at EMS as a programmer in 1981.

**Mike Reynolds** ('82 MA Urban Planning) is an executive planner with Hillsborough County (Tampa), Fla.

**Jerome Benuck** ('83 BA Human Resource Management) has joined Maryland-based CodeRyte Inc., a leading provider of medical coding technologies and Internet-based medical coding services, to lead

strategic account sales on the East Coast.

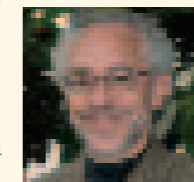
**Christopher Bratton** ('83 MFA Film) has been named president of the San Francisco Art Institute. A videographer, he previously was the dean of undergraduate studies at the School of the Art Institute of Chicago.

**Diane Brewton** ('83 MA Economics) has joined Decision Analyst, an international marketing research and consulting firm based in Texas, as senior vice president and director of syndicated research.

**Bruce Kaniewski** ('83 MA Urban Planning) is a planner with Ruekert/Mielke in Pewaukee.

**Larry Lange** ('83 MA English) and his wife, Julie Wrubbel-Lange, are two members of a three-pastor team at Grace Lutheran Church in Green Bay. He has recently authored a book, "Retelling the Story" (CSS Publishing). [pastorlarry@gracelutheran-greenbay.org](mailto:pastorlarry@gracelutheran-greenbay.org)

**Christopher Dunn** ('85 PhD Botany) is executive director for research programs and Smith Family Curator of Native Habitats at the Chicago Botanical Gardens.



Christopher Dunn

**Simon Dumenco** ('85 BS Zoology), a former writer and editor for Milwaukee magazine before working for magazines including Seventeen and New York, is penning a new column called "Media Guy" in Advertising Age magazine.

**Ron Gulotta** ('85 MSW, Social Work) has been promoted to associate professor of sociology at the University of Wisconsin-Waukesha.

**George H. Herro** ('85 BBA Accounting) recently passed the National CPA Exam to become a Certified Public Accountant. He is a partner in the family-owned accounting firm George H. Herro, CPA, SC, in Germantown, Wis. Herro has served on the boards of the Wisconsin Wind Orchestra, the Institute of Management Accountants and the Midwest Federation of American Syrian and Lebanese

Clubs. He also is active in the Germantown Kiwanis.

**Jim Schnuck** ('85 BBA Accounting) was recently named vice president of financial operations for Ardent Health Services in Nashville, Tenn.

**Carrie Hoye** ('86 BA Organization Communication) recently launched Carrie Hoye LLC, a marketing consulting firm specializing in database and direct marketing strategy. She previously was vice president of sales and marketing with GE Consumer Finance, and director of consumer marketing with the Chicago Tribune.

**Joanna Patterson** ('88 MS Administrative Leadership) is assistant director of the Career Education Center at Alverno College in Milwaukee.

**Jay C. Peterson** ('88 MBA) recently discussed Forgent Network's intellectual property patent licensing program during interviews with CBS MarketWatch, CNET and Wired magazine. Peterson is the chief financial officer and VP of Finance of Forgent Networks, headquartered in Austin, Texas.

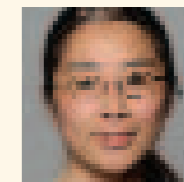


Jay C. Peterson

**Mike Stoner** ('88 BA Journalism) is co-owner of North Star American Bistro in Shorewood. **James Piekarski** ('89 BFA Music) was promoted to professor in the Department of Recording Industry at Middle Tennessee State University in Murfreesboro, Tenn., where he teaches courses in digital music production, recording studio technology and commercial music.

## 1990s

**Janet Song** ('91 Master of Architecture) has joined Loeb Schlosman & Hackl, a Chicago-based architecture, planning and interior design firm. She currently is working on designs for medical office



Janet Song

suites at Central DuPage Hospital in Winfield, Ill.

**David "Bud" Laumer** ('92 MA Urban Planning) is a planner in Fresno County, Calif.

**Eric Fowler** ('93 MA Urban Planning, '91 BS

Geography) is a GIS project manager with R.A. Smith and Associates in Brookfield.

**Erik Holland** ('93 MA History) is an interpretive program specialist with the Minnesota Historical Society. [erik.holland@mnhs.org](mailto:erik.holland@mnhs.org)

**Gary A. Hoover** ('93 BA Economics), associate professor of economics and Harrison Teaching Excellence Faculty Fellow in the Culverhouse College of Commerce at the University of Alabama, has been appointed assistant dean for graduate student development. While at UWM, he



Eric Fowler



Gary A. Hoover

participated in the Ronald E. McNair Scholars Program. **Debra Chomicka** ('94 MA History, '82 BA Anthropology) is director of the Career Education Center at Alverno College in Milwaukee. As part of the Alverno Asian Studies Initiative, she spent a month of study in Japan, Korea and China.

**Mark Mantyh** ('94 PhD Urban Studies, '89 MA Sociology) is a senior lecturer in the UWM Sociology Department and coordinator of the department's Internship in Sociology Program.

**Eddie Baumann** ('95 Ph.D., '87 MS, '83 BS Education) was recently promoted to professor of education at Cedarville (Ohio) University. He has been a faculty member there since 1993, and was instrumental in developing the university's M.Ed. program.

# CLASSNOTES

**Mark Gorzek** ('95 BBA Accounting), CPA, has been named vice president controller for the Menasha Corp. in Neenah, Wis.

**Daniel T. Groelle** ('95 BS Atmospheric Science) has been living in Wyoming for the past ten years. He works in the oil industry, most recently as a directional drilling engineer with Pathfinder Energy. "I know it's a world apart from what I studied," he writes, "but have you seen what environmental consulting is paying these days?"

**Serif Igu Ozler** ('95 MA Political Science) is currently a lecturer at The State University of New York in New Paltz.

**Richard Agesa** ('96 PhD, '90 MA Economics) and **Jacqueline Agesa** ('96 PhD, '91 MA, '90 BA Economics) have been economics professors at Marshall University's

Lewis College of Business (Huntington, W.V.) since 2000. They are both ranked among the top 20 African American economists in the nation.

**Carjean Buhk** ('96 MA Communication) is the public relations coordinator of

Milwaukee's Urban Ecology Center.

**James Dunford** ('96 BA Biological Sciences) recently received the 2005 Graduate Student Teaching Excellence Award from the North American Colleges and Teachers of Agriculture. He is finishing his Ph.D. in Entomology and Nematology at the University of Florida, where he teaches insect classification courses. He was also recently awarded the Navy Health Services Collegiate Scholarship, and will be employed as lieutenant in the Navy specializing in medical entomology. He has worked as a curator of butterflies and moths at the Milwaukee Public Museum.

**Laura Ashleigh King** ('97 BA Visual Art) has been appointed to the Milwaukee Arts Board by Mayor Tom Barrett. She is the executive artist and owner of Artistic Finishes LLC, a Milwaukee decorative painting company specializing in custom faux finishes, decorative murals, tromp l'oeil, hand-painted

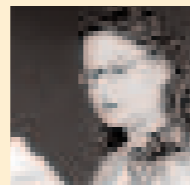
functional and decorative designs, and color consultation. [www.artisticfinishes.biz](http://www.artisticfinishes.biz)

**Greg Ahrenhoerster** ('98 PhD, '93 MA English) has been promoted to associate professor of English at the University of Wisconsin-Waukesha.

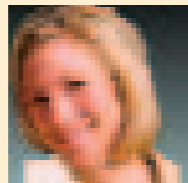
**Rebecca (Fedel) Hedderich** ('98 BBA Accounting) was recently promoted to manager of accounting at ESPN Inc. in Bristol, Conn.

**Sharon McQueen** ('99 MLIS Library & Information Science, '97 BA

Theater) has accepted a position as assistant professor in the School of Library and Information Science at the University of Kentucky. She will teach youth literature and library youth services courses, and will serve as director of the school's annual McConnell Conference for Children's Literature. McQueen is known as the founder and artistic director of Theater Tesseract and the co-founder of Next Act Theatre.



**Sharon McQueen**



**Laura Ashleigh King**

## SHOW US YOUR PANTHER PRIDE!

Janet (Jhin) Bollow ('67 BFA) and John A. Bollow ('72 BS) show their Panther Pride at the Metropolitan Museum of Art in New York City.

The Bollows were visiting New York last March as the Panthers made their Cinderella run to the NCAA Sweet 16. "I insisted we wear our Panther T-shirts all weekend," John writes, "and we did get noticed around Manhattan."

Janet and John, both retired elementary-school teachers, love visiting art museums around the world. They also love watching the Panthers. They are men's basketball season ticket holders and contributors to the Panther Fund. They also return to campus for Alumni College, Craft Centre classes and films at the Union Theatre.

"We have become quite proud of our UWM affiliations because of the great achievements in UWM's academic, sports and alumni programs," John writes.

## WHERE IN THE WORLD HAVE YOU DISPLAYED YOUR PANTHER PRIDE?

Send us a photo showing you, friends or family members who have taken the UWM name to far-flung or interesting parts of the planet. Prizes will be awarded to those whose submissions are used in the magazine. Don't forget to include a self-addressed, stamped envelope if you want the photo returned.

Mail photos to University Communications and Media Relations, UWM-Milwaukee, P.O. Box 413, Milwaukee, WI 53201. Please include your name, address, degree year(s) and where the photo was taken.

**Hélène Wimmerlin** ('99 MA Foreign Languages & Linguistics) was promoted to director of client services at Iverson Language Associates in Milwaukee, where she has worked for six years.

## 2000s

**Vanessa Kuehner** ('00 MA Urban Planning, '97 BA Art History) was promoted to senior planner with Ruckert/Mielke in Pewaukee.

**Smitha Vijayan** ('00 MS Engineering & MA Urban Planning) is a GIS specialist, transportation engineering, for CH2M Hill in Milwaukee.

**Eric D. Wightman** ('00 MA Administrative Leadership & Supervision in Education) has been named dean of students at South Milwaukee Middle School. Previously, he was a teacher at Forest Park Middle School in Franklin.

**Jon Brouchoud** ('01 MA Architecture, '98 BS Architectural Studies) and spouse **Kandy Brouchoud** ('02 MA Architecture, '00 BS Architectural Studies) own Crescendo Design, an architectural design firm in Cleveland, Wis. They recently designed an environmentally friendly home that was chosen at an international design competition to be constructed.

**Quintin Oldenburg** ('01 BA History), the 2001 Midwest Collegiate Conference Pitcher of the Year at UWM, is now in his first full season with the Gary Southshore Railcats of the Northern Independent League after signing with the club in 2004. He won his first six starts of the season.

**Britta Arendt** ('02 MA History) is assistant collections manager at the Frank Lloyd Wright Trust (Home & Studio, Robie House) in Oak Park, Ill.

**Amy Fritz** ('02 MS Administrative Leadership) is manager of the Career Lab at Alverno College in Milwaukee.

**Mohammad Siddique** ('02 PhD Mathematics) is assistant professor of mathematics at Edward Waters College in Jacksonville, Fla. [msiddique@ewc.edu](mailto:msiddique@ewc.edu)

**Beth (Rose) Podrovitz** ('03 MA Foreign Languages & Linguistics) has been hired as project manager by Cetra Inc., a growing translation agency in suburban Philadelphia.

**Tamesia Sosa** ('03 MA Foreign Languages & Linguistics) is a medical interpreter at Children's Hospital of Wisconsin.

**Monika (Nadkarni) Adhye** ('03 MA Foreign Languages & Linguistics) joined Eriksen Translations in Brooklyn Heights, N.Y., last year as project coordinator. She is fluent in English,

German, French, Hindi and her native language, Marathi.



**Monika (Nadkarni) Adhye**

**Misty (Melsheimer) Braun** ('03 BA Spanish) is a medical interpreter at Milwaukee's Columbia Hospital.

**Jacqueline Frank** ('03 MA History) is a recorder at the Neville Public Museum in Green Bay.

**Bryan G. Pfeifer** ('03 BA Journalism) received his MS degree in Labor Studies from the University of Massachusetts at Amherst in May. He now resides in Boston, working as a freelance journalist and in the labor and related social justice movements.

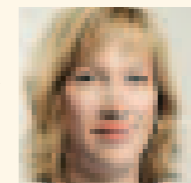
**Amy Allen** ('04 MA Foreign Languages & Linguistics) has joined Iverson Language Associates in Milwaukee as a project manager.

**Chad Dombrowski** ('04 BA History), a West Allis native and former UW-Milwaukee soccer star, is a defender for the St. Paul team, Minnesota Thunder.

**Skip Holschbach** ('04 Master of Architecture, '92 BS Architectural Studies) has joined Kahler Slater's Milwaukee office as an architect. He formerly worked as an architect with Bray Associates Architects in Sheboygan.



**Bryan G. Pfeifer**



**Amy Allen**

**Tatyana Karaman** ('04 PhD Political Science) is an assistant professor at Stamford University in Birmingham, Ala.

**Kimberly Vaitonis** ('04 MA Foreign Languages & Linguistics) is a project manager at Argo Translations in Glenview, Ill.

**Beth Fetterley** ('05 MBA) is the education director of the Urban Ecology Center in Milwaukee.

**Laty Keodouangsy** ('05 Adult & Continuing Education, '99 BA Linguistics) has been named supervisor of credentialing, classification and compensation for the Oakland Unified School District in Oakland, Calif.



## VICTOR E. MEETS VICTOR E.

Roger Nord ('98 MS Management, '81 BA Economics) and his wife Sue sent this photo of their son, Victor E(mmanuel) Nord, with his namesake, Victor E. Panther. "Victor Emmanuel was welcomed to our hometown of Eagan, Minn., from Guatemala on Feb. 25, 2005, just in time to watch the Panthers' magical run to the Sweet 16 with his proud father," Nord writes. The photo was taken in May at an open house in Milwaukee at the home of Wisconsin State Rep. David Cullen. Nord reports that both Victor Es were a big hit with everyone.



## KEEP IN TOUCH! SEND IN YOUR CLASS NOTES NEWS

Won an award? Started a business? Had an adventure? We'd like to hear about it. Email your Class Notes news to:

[alumni@uwm.edu](mailto:alumni@uwm.edu) or write to UWM Alumni Association, P.O. Box 413, Milwaukee, WI 53201.

Please be sure to include your full name (including maiden name, if applicable),

address, year(s) of graduation, degree(s) and major(s). Photos are welcome!

## SUBSCRIBE TO UWM CONNECTION

UWM Connection, the university's monthly e-newsletter, keeps you connected to campus with news about special events, the latest research and programs, athletics and fellow alums. It's free! Subscribe today at [www.alumni.uwm.edu](http://www.alumni.uwm.edu).



Alumni Association and Foundation  
P.O. Box 413  
Milwaukee, WI 53201-0413

Nonprofit Organization  
U.S. Postage  
PAID  
Milwaukee, WI  
Permit No. 864